

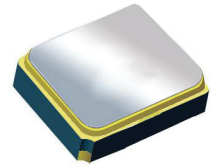
Surface Mount 915.00MHz SAW Filter

AFS20A26-915.00-T3

Moisture Sensitivity Level (MSL) – This product is Hermetically Sealed and not Moisture Sensitive - MSL = N/A: Not Applicable



RoHS
Compliant



2.0 x 1.6 x 0.9 mm

FEATURES:

- 2.0 x 1.6 x 0.9 mm low profile SMT package
- Low Insertion loss
- Excellent selectivity with high out-of-band rejection

APPLICATIONS:

- Wireless Communication
- Remote Control
- Cellular Phones

ELECTRICAL SPECIFICATIONS:

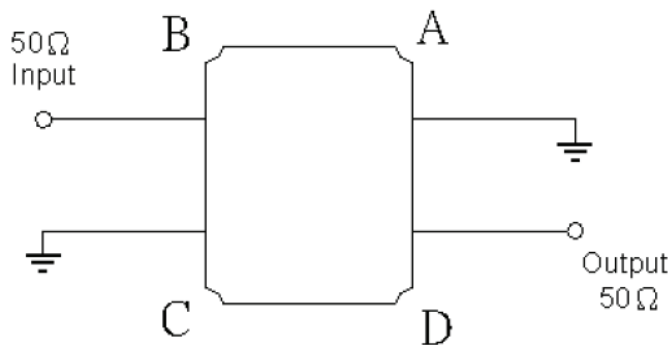
Maximum Ratings

Item	Value
Input Power Level	+15 dBm max.
DC Permissive Voltage	3V DC max.
Operating Temperature Range	-40°C to + 85°C
Storage Temperature Range	-40°C to + 85°C

Parameters	Minimum	Typical	Maximum	Units	Notes
Center Frequency (f_c)		915.00		MHz	
Insertion Loss (IL)		2.00	3.00	dB	902 ~ 928MHz
Effective Bandwidth		26		MHz	
Amplitude Ripple		0.80	1.50	dB	902 ~ 928MHz
Worst-Case Input / Output Return Loss		9.5	8.0	dB	902 ~ 928MHz
Stop-band Attenuation (Referenced to 0.0 dB)	40	55		dB	10MHz ~ 857.5MHz
	35	48			857.5MHz ~ 882.5MHz
	35	48			970MHz ~ 1005MHz
	45	52			1005MHz ~ 1110MHz
	30	35			1110MHz ~ 3000MHz
Source Impedance (Z_s)		50		Ω	See note # 1
Load Impedance (Z_L)		50		Ω	See note # 1

Note #1: No matching network required for operation into 50 Ω 's

TEST CIRCUIT:

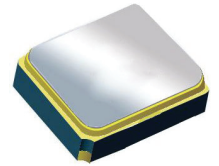


Surface Mount 915.00MHz SAW Filter

AFS20A26-915.00-T3

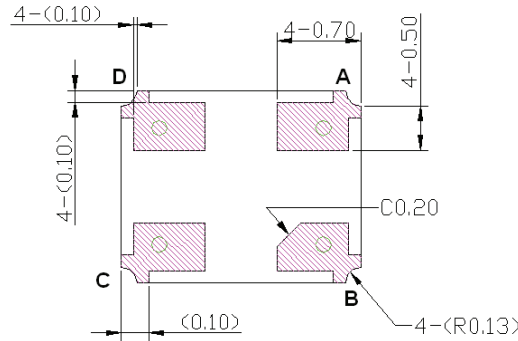
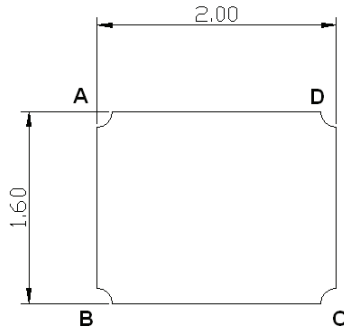


RoHS
Compliant

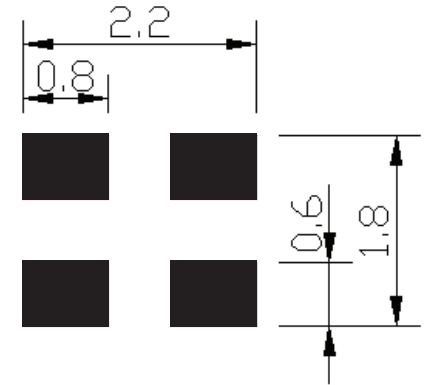


2.0 x 1.6 x 0.9 mm

OUTLINE DIMENSIONS:



Recommended Land Pattern:

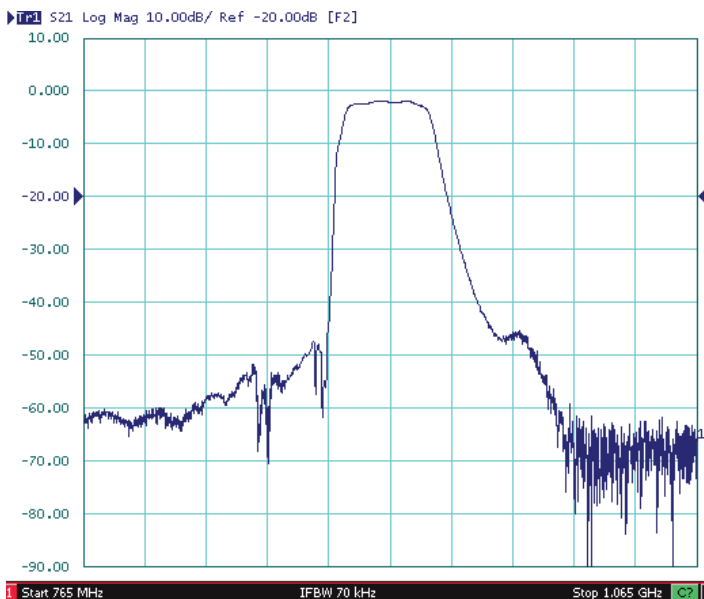


#B:	Input
#D:	Output
#A,C:	Ground
Unit:	mm

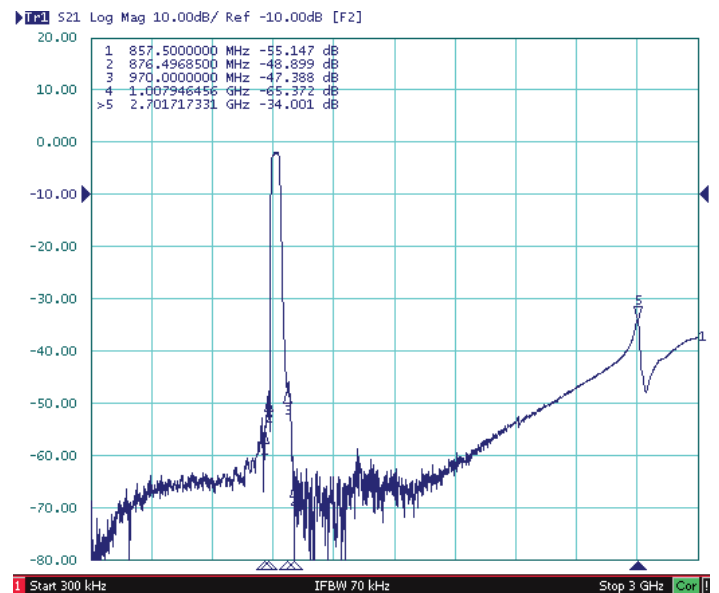
*All Dimensions are in mm

FREQUENCY CHARACTERISTICS:

Filter Frequency Response (Narrowband)



Filter Frequency Response (Wideband)

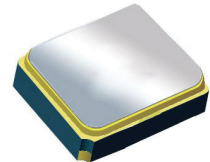


Surface Mount 915.00MHz SAW Filter

AFS20A26-915.00-T3



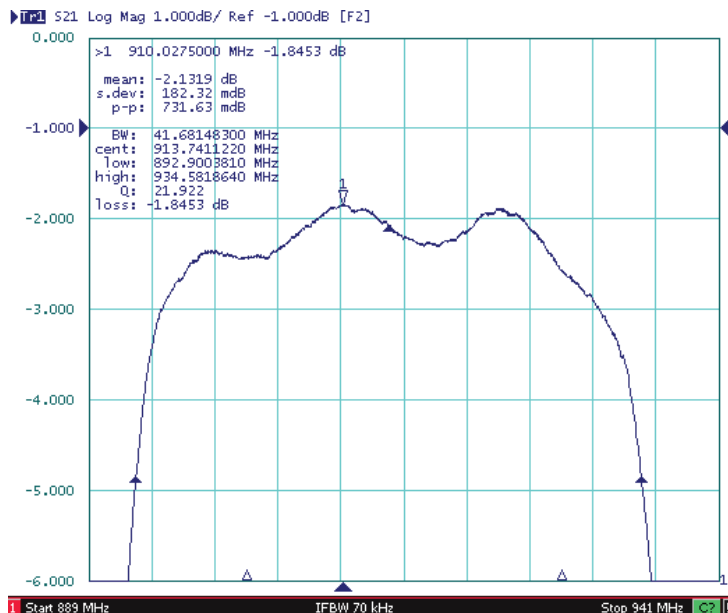
RoHS
Compliant



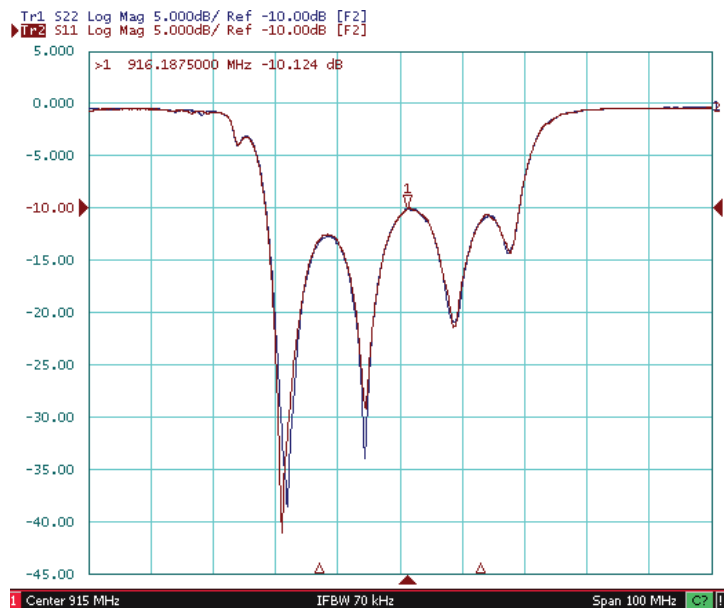
2.0 x 1.6 x 0.9 mm

FREQUENCY CHARACTERISTIC:

Pass Band Response

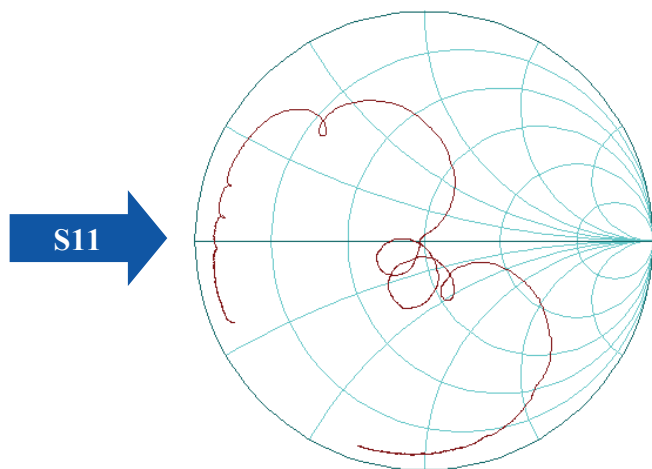


Return Loss

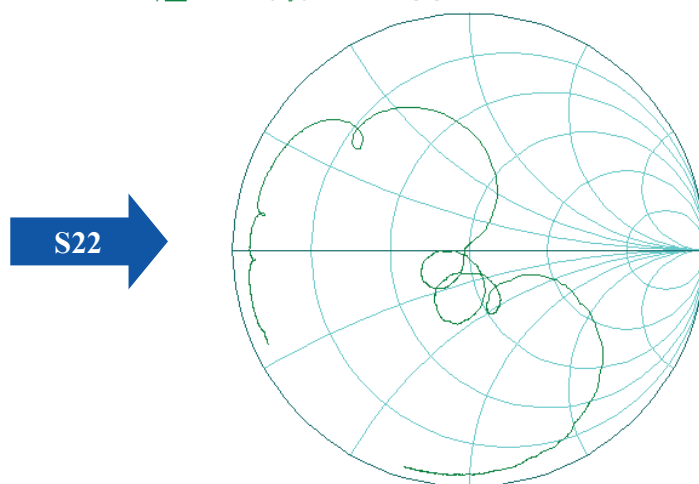


Reflection Functions:

Tr2 S11 Smith (R+jX) Scale 1.0000 [F2]



Tr2 S22 Smith (R+jX) Scale 1.0000 [F2]



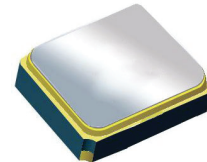
Note # 2: Detail S parameter information (.s2p file) available upon request

Surface Mount 915.00MHz SAW Filter

AFS20A26-915.00-T3

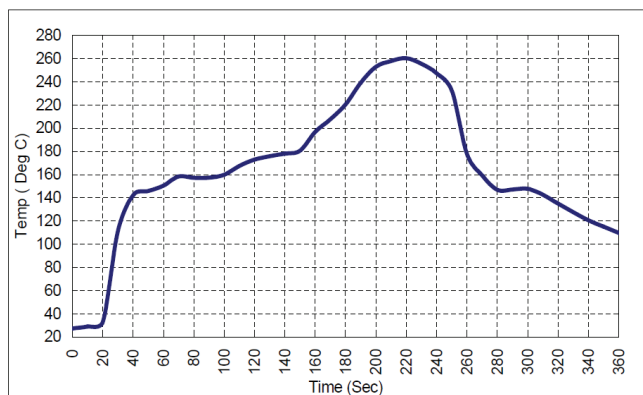


RoHS
Compliant



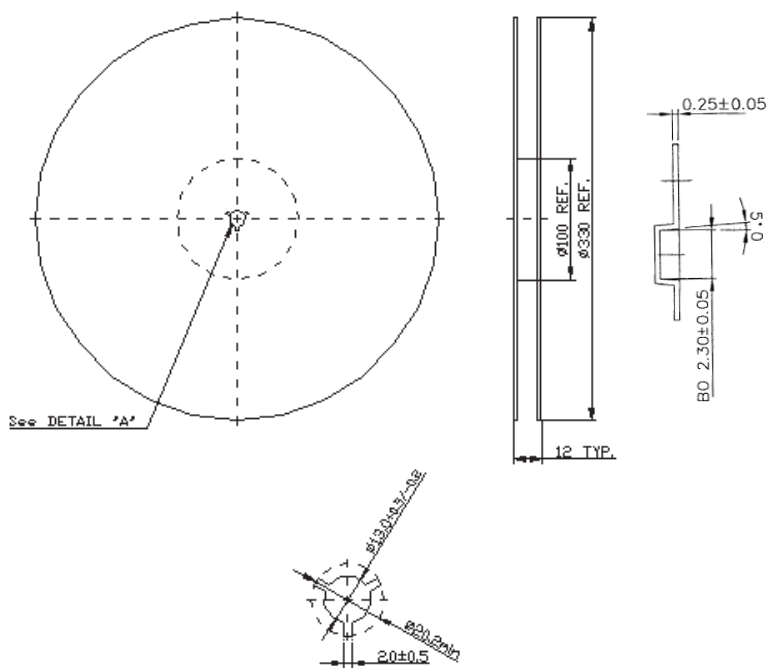
2.0 x 1.6 x 0.9 mm

REFLOW PROFILE:

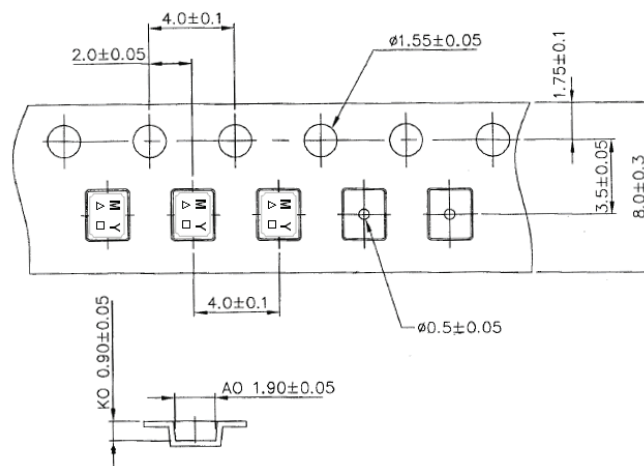


PACKAGING: 3000 Units/Reel “-T2” parts (2k/reel) are no longer available effective 01/01/2013

Reel Dimensions



Tape Dimensions



ATTENTION: Abracon LLC's products are COTS – Commercial-Off-The-Shelf products; suitable for Commercial, Industrial and, where designated, Automotive Applications. Abracon's products are not specifically designed for Military, Aviation, Aerospace, Life-dependant Medical applications or any application requiring high reliability where component failure could result in loss of life and/or property. For applications requiring high reliability and/or presenting an extreme operating environment, written consent and authorization from Abracon LLC is required. Please contact Abracon LLC for more information.



1501 Hidden Creek Lane Spicewood TX 78751
Phone: 949-546-8000 | Fax: 949-546-8001
For terms and conditions of sales visit:
www.abracon.com

REVISED: 07/11/2018

ABRACON IS
ISO9001-2015
CERTIFIED

Mouser Electronics

Authorized Distributor

Click to View Pricing, Inventory, Delivery & Lifecycle Information:

[ABRACON:](#)

[AFS20A26-915.00-T3](#)