

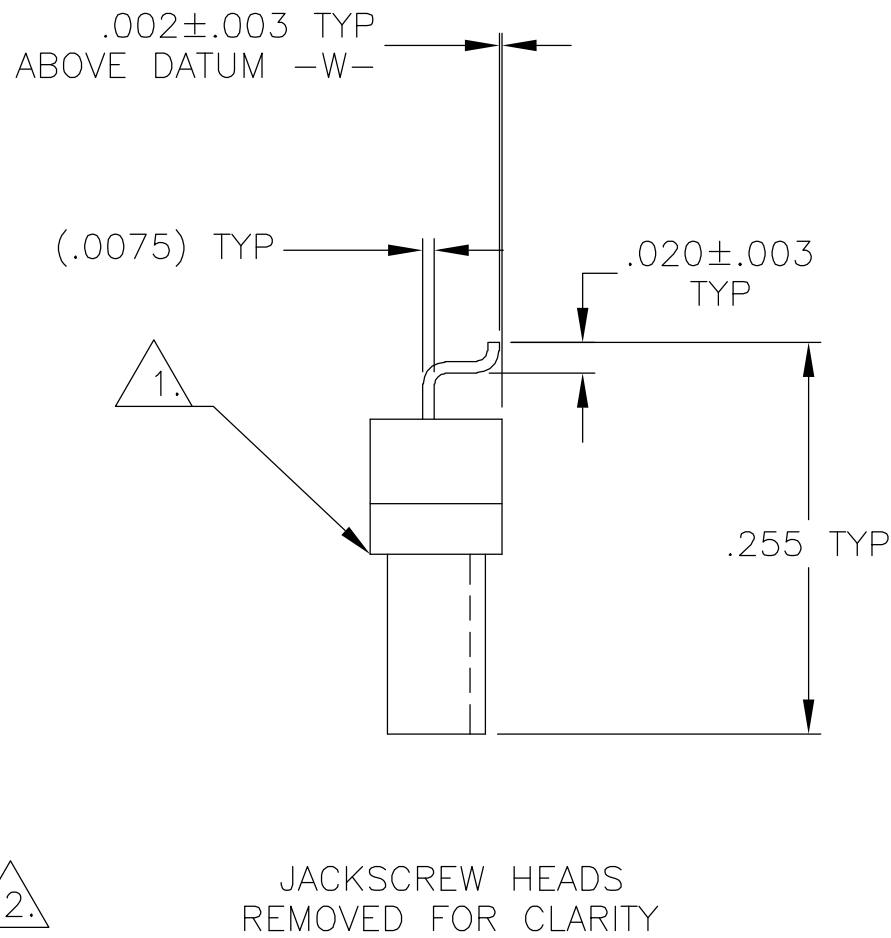
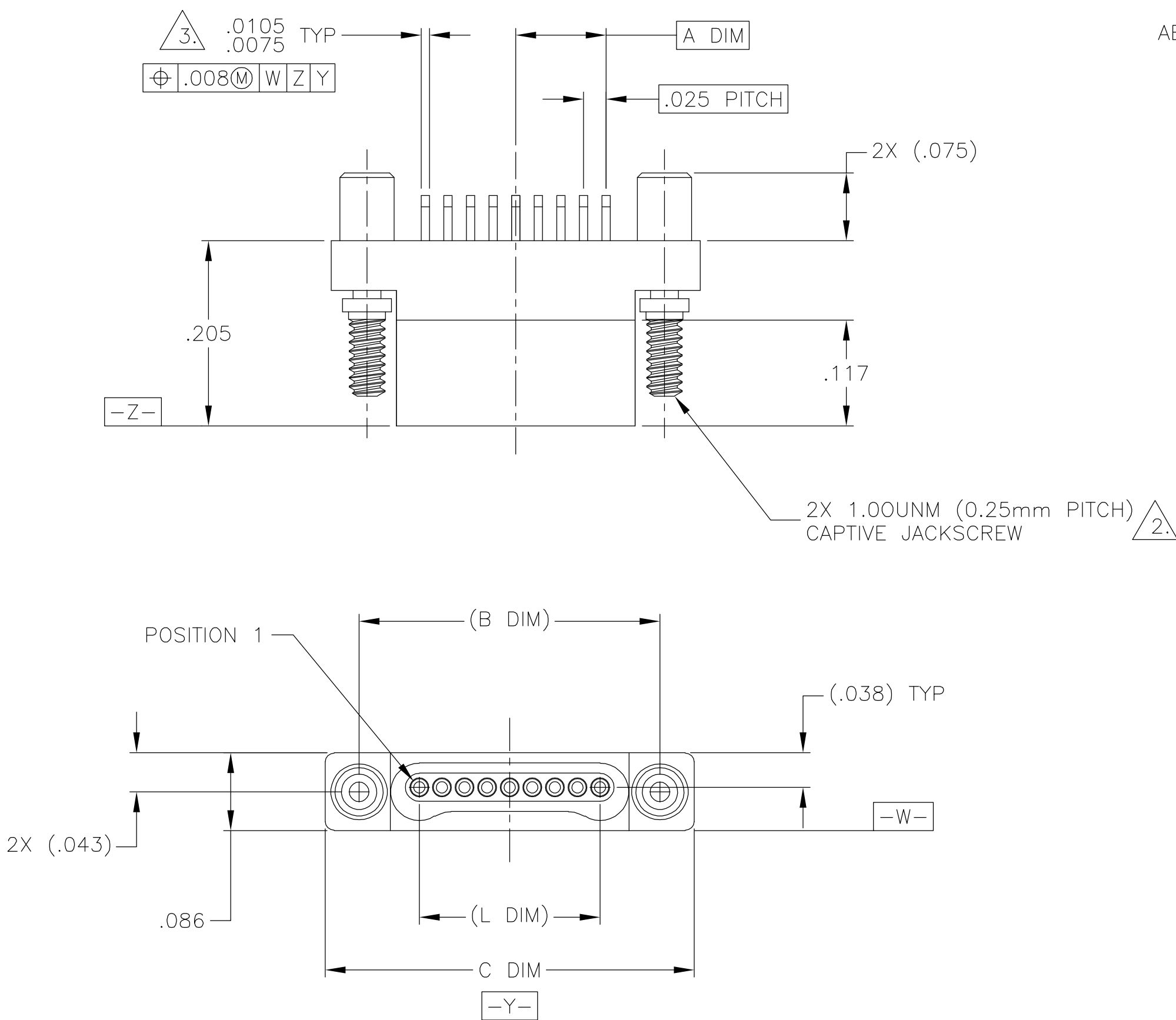
LOC	DIST	REVISIONS					
		P	LTR	DESCRIPTION	DATE	DWN	APVD
DF	D0		J	UPDATE PER 0H2Y-0164-04	05-12-04	JDM	MKS

D

C


B

A



SIZE	A DIM	(B DIM)	C DIM ±.0050	(L DIM)
05	.050	(.233)	.3085	(.100)
09	.100	(.333)	.4085	(.200)
15	.175	(.483)	.5585	(.350)
25	.300	(.733)	.8085	(.600)
37	.450	(1.033)	1.1085	(.900)
51	.625	(1.383)	1.4585	(1.250)

1. SHELL OPTIONS (TO BE SPECIFIED IN NANONICS PART NUMBER):
METAL: 6061-T6 ALUMINUM, ELECTROLESS NICKEL PLATED PER MIL-C-26074 (STANDARD) OR GOLD PLATED PER MIL-G-45204
303 STAINLESS STEEL, PASSIVATED PER SAE-AMS-QQ-P-35
INSULATOR MATERIAL FOR ALL METAL SHELLS IS LIQUID CRYSTAL POLYMER (LCP) PER MIL-M-24519 OR PER ASTM D5138
PLASTIC: LIQUID CRYSTAL POLYMER (LCP) PER MIL-M-24519 OR PER ASTM D5138
2. STANDARD 1.00UNM CAPTIVE JACKSCREWS ARE SHOWN FOR REFERENCE ONLY AND MUST BE SPECIFIED IN THE NANONICS PART NUMBER WHEN REQUIRED. JACKSCREW MATERIAL IS 303 STAINLESS STEEL, PASSIVATED PER SAE-AMS-QQ-P-35, AND LUBED PER DOD-L-85645. RETAINING RING IS 17-4 STAINLESS STEEL, PASSIVATED PER SAE-AMS-QQ-P-35. JACKSCREWS HAVE A .9mm HEX SOCKET HEAD. 1.20UNM JACKSCREWS ALSO AVAILABLE.
3. SMT LEADS ARE BeCu, TIN LEAD PLATED 60/40 COMPOSITION PER SAE-AMS-P-81728
4. NANONICS TERMINATION CODE: B2
5. THIS DRAWING PREVIOUSLY IDENTIFIED AS NANONICS N10138/120

THIS DRAWING IS A CONTROLLED DOCUMENT.		DWN C. SCHOLL	04-19-01	tyco Electronics Tyco Electronics Corporation Harrisburg, PA 17105			
DIMENSIONS: INCHES		CHK M. STORRY	04-20-01	NAME PLUG ASSEMBLY, HORIZONTAL SURFACE MOUNT, SINGLE ROW DUALLOBE, PLASTIC OR METAL			
	TOLERANCES UNLESS OTHERWISE SPECIFIED:	APVD —	—				
		PRODUCT SPEC —					
		APPLICATION SPEC —					
MATERIAL SEE NOTES	FINISH SEE NOTES	WEIGHT —		SIZE A2	CAGE CODE 00779	DRAWING NO C=1589460	RESTRICTED TO —
CUSTOMER DRAWING				SCALE 8:1	SHEET 1 OF 2	REV J	

D

C

B

A

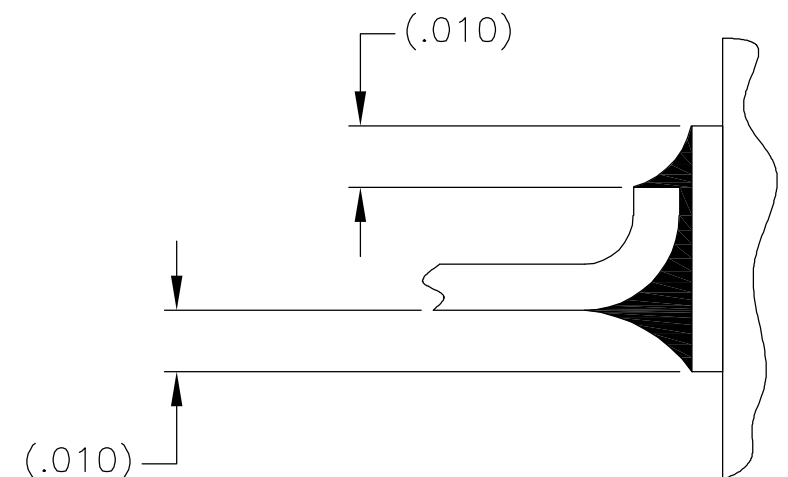
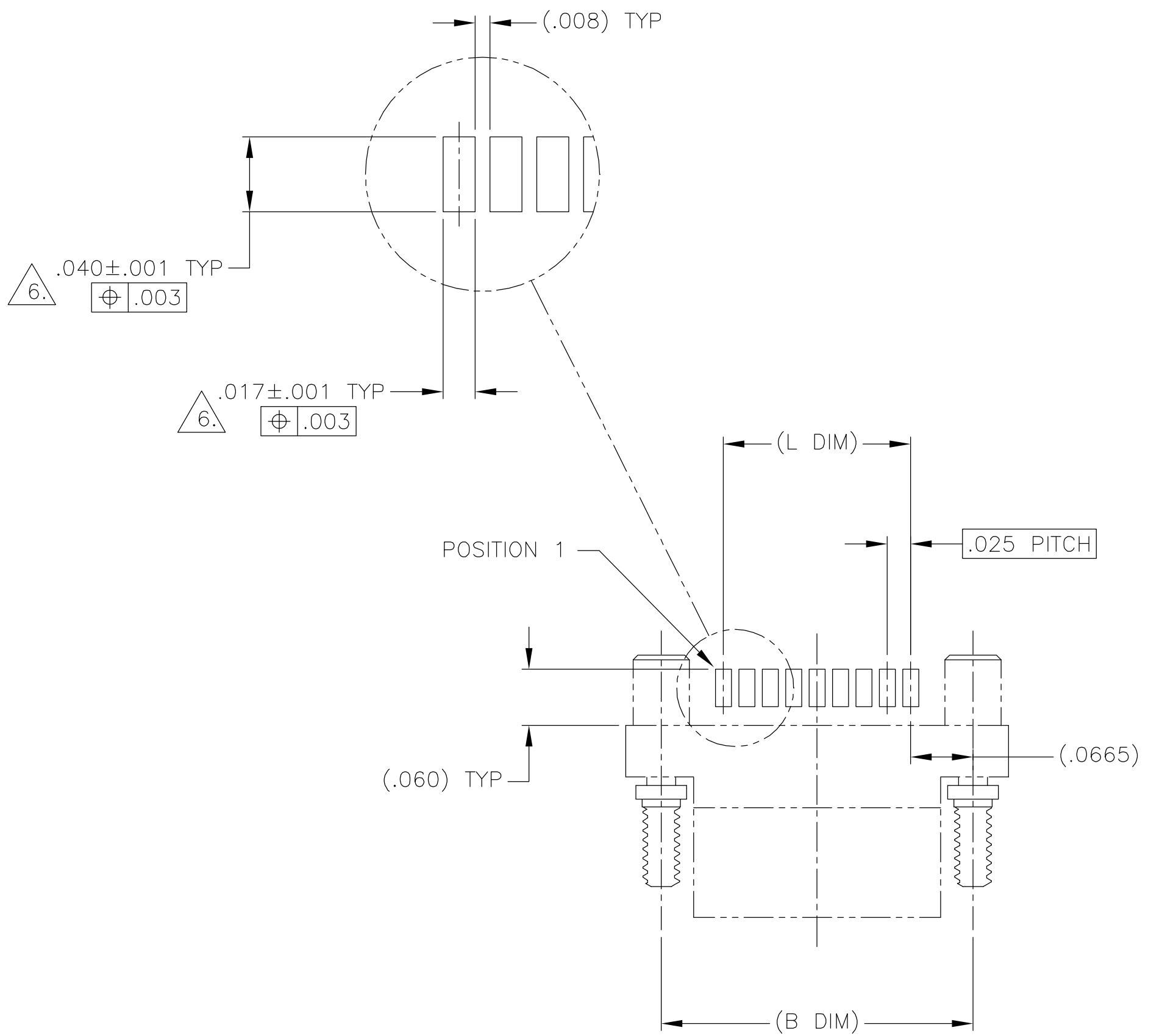
1589460

THIS DRAWING IS UNPUBLISHED.

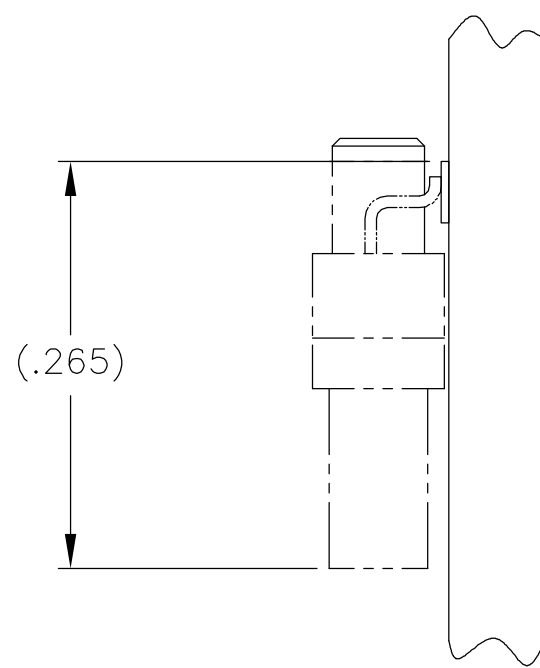
RELEASED FOR PUBLICATION

© COPYRIGHT - BY TYCO ELECTRONICS CORPORATION. ALL RIGHTS RESERVED.

LOC	DIST	REVISIONS					
		P	LTR	DESCRIPTION	DATE	DWN	APVD
DF	D0		J	UPDATE PER 0H2Y-0164-04	05-12-04	JDM	MKS




TYPICAL FOOT PLACEMENT
ON SOLDER PAD



SIZE 09 SHOWN FOR REFERENCE

TYPICAL PCB LAYOUT

POSITIONAL TOLERANCES FOR BASIC DIMENSIONED FEATURES ARE RELATIVE TO FIDUCIALS OR SOME SIMILAR DATUM REFERENCE DEFINED BY THE PCB DESIGNER.

THIS DRAWING IS A CONTROLLED DOCUMENT.			DWN C. SCHOLL 04-19-01	tyco Electronics Tyco Electronics Corporation Harrisburg, PA 17105					
DIMENSIONS: INCHES			CHK M. STORRY 04-20-01	NAME PLUG ASSEMBLY, HORIZONTAL SURFACE MOUNT, SINGLE ROW DUALLOBE, PLASTIC OR METAL					
			APVD —					PRODUCT SPEC —	
			APPLICATION SPEC —					—	
MATERIAL —			FINISH —	WEIGHT —	SIZE A2	CAGE CODE 00779	DRAWING NO C=1589460	RESTRICTED TO —	
CUSTOMER DRAWING				SCALE 8:1		SHEET 2 OF 2		REV J	

Mouser Electronics

Authorized Distributor

Click to View Pricing, Inventory, Delivery & Lifecycle Information:

[TE Connectivity:](#)

[SSM037B2N](#)