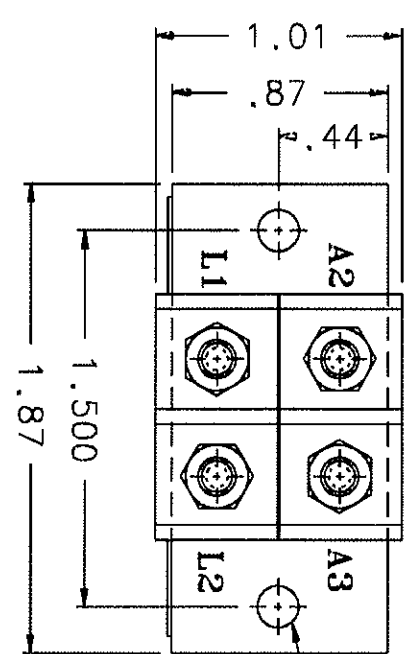
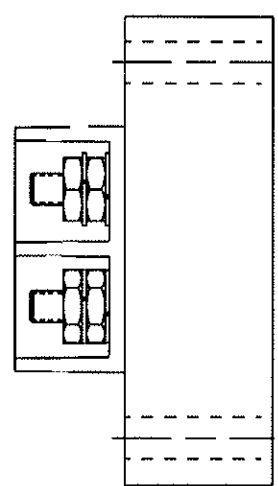
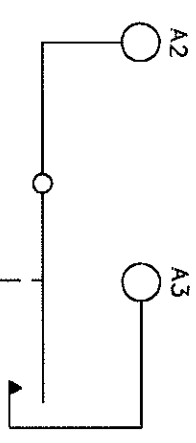


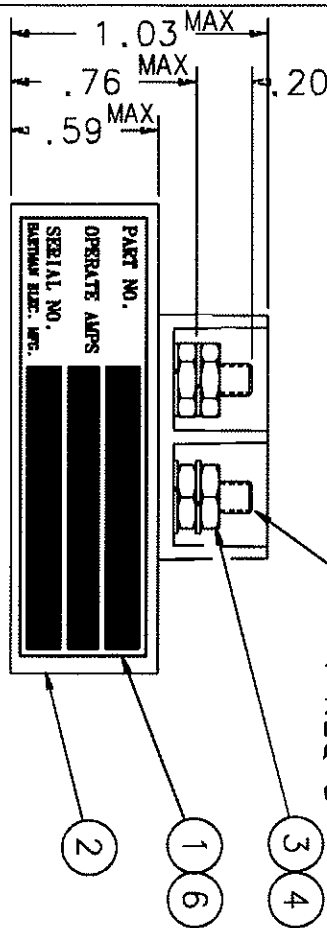
REVISIONS		RELEASED	
REV.	DESCRIPTION	DATE	APPROVED
C	REMOVED NOT RELEASED FOR PRODUCTION	99/03/17	RS
D	*MAX* ADDED TO .59	99/09/27	RS
E	*MAX* ADDED TO .76 & 1.03	00/02/01	RS
F	CHANGED ALTITUDE TO 60,000 ADDED TYCO P/N	02/07/25	RS
G	CHANGED ITEM 2 FROM -010 TO -030	03/12/16	CS



2 : 166 DIA. HOLE  
MTG HOLES



4 6-32 UNC-2A  
REQ'D



**OPERATING CHARACTERISTICS**  
 PICKUP 1.5 AMP MAX.  
 DROPOUT LESS THAN 1 AMP  
 CONTINUOUS 10 AMPS MAX.  
 15 AMP FOR 3 SEC  
 1.25 OZ.  
 TEMP -55°C TO +71°C  
 VIBRATION 10 G's TO 500HZ  
 ALTITUDE 60,000 FT. MAX.  
 CONTACT RATING 2 AMP RES. 28 VDC  
 .08 AMP LAMP LOAD

QTY	PART OR IDENTIFYING NO	DESCRIPTION	REVISION
6	1	OVERLAY	
4	4	WASHER - LOCK No.6 SPLIT	
3	4	NUT 6-32 X 1/4 X 5/64 HEX.	
2	1	RELAY ASSEMBLY - PRIMARY	
1	1	PLATE - NAME	
1	1	34246-001	

UNLESS OTHERWISE SPECIFIED DIMENSIONS ARE IN INCHES TOLERANCES ARE	
±.06	±.010
MATERIAL	
DR BY	RCB 03/12/16
CHK BY	CS 03/12/16
ENGR	CS 09-01-08
MFG	M 04-21-14
SIZE	
CODE IDENT	74063

TYCO Electronics  
 175 N. DUNDAS STREET, WILMINGTON, OHIO 44092  
 RELAY - CURRENT INDICATOR  
 DWG NO. Q-50AB-2  
 REF TYCO P/N 0-1616131-3  
 SCALE 1/1 SHEET

# Mouser Electronics

Authorized Distributor

Click to View Pricing, Inventory, Delivery & Lifecycle Information:

[TE Connectivity:](#)

[Q50AB2](#)