

Distribution Unit with 1 IEC Appliance Inlet C14 or Power Cord, 4, 5 or 6 IEC Appliance Outlets F and Extra Components



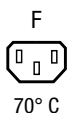
with EU power supply cord



with appliance inlet



with IEC power supply cord



See below:

[Approvals and Compliances](#)

## Description

- Stand alone module
- 2 - 5 Functions :  
Appliance Inlet Protection class I , Connector shuttered
- Line Switch
- Fuseholder with fuse and neon indicator
- Version with line filter 6A

## References

### Weblinks

[pdf data sheet](#), [html datasheet](#), [General Product Information](#), [Approvals](#), [Distributor-Stock-Check](#), [Accessories](#), [Detailed request for product](#)

## Technical Data

|                                   |  |
|-----------------------------------|--|
| Ratings IEC                       | 10 A / 250 VAC; 50 Hz  |
| Ratings UL/CSA                    | 15 A / 250 VAC; 60 Hz  |
| Dielectric Strength               | > 2.5 kVAC between L-N<br>> 2.5 kVAC between L/N-PE<br>(1 min/50 Hz) |
| Allowable Operation Temperature   | -25 °C to 70 °C  |
| Protection against electric shock | Suitable for appliances with protection class I acc. to IEC 61140    |
| Material: Housing                 | Thermoplastic, black, UL 94V-0                                       |

|                              |  |
|------------------------------|--|
| Appliance inlet/-outlet      | C14 acc. to IEC 60320-3,<br>/ F acc. to IEC 60320-3<br>UL 60320-1 CSA C22.2 no. 60320-1<br>(for cold conditions) pin-temperature 70 °C, 10 A, Protection Class I |
| Fuseholder                   | 1-pole, acc. to IEC 60127-6,<br>for fuse-links 5 x 20 mm   |
| Power Acceptance @ Ta > 23°C | Admissible power acceptance at higher ambient temperature see derating curves  |
| Line Switch                  | Rocker switch, illuminated, acc. to <a href="#">Technical Details</a>  |

## Approvals and Compliances

Detailed information on product approvals, code requirements, usage instructions and detailed test conditions can be looked up in [Details about Approvals](#)

SCHURTER products are designed for use in industrial environments. They have approvals from independent testing bodies according to national and international standards. Products with specific characteristics and requirements such as required in the automotive sector according to IATF 16949, medical technology according to ISO 13485 or in the aerospace industry can be offered exclusively with customer-specific, individual agreements by SCHURTER.


## Product standards

Product standards that are referenced

| Organization | Design                | Standard              | Description   |
|--------------|-----------------------|-----------------------|---|
|              | Designed according to | IEC 60320-3           | Appliance couplers for household and similar general purposes         |
|              | Designed according to | IEC 60320-3           | Appliance couplers for household and similar general purposes         |
|              | Designed according to | IEC 60127-6           | Miniature fuses. Part 6. Fuse-holders for miniature fuse-links        |
|              | Designed according to | UL 60320-1            | Standard for Attachment Plugs and Receptacles                         |
|              | Designed according to | CSA C22.2 no. 60320-1 | General Use Receptacles, Attachment Plugs, and Similar Wiring Devices |






Application standards

Application standards where the product can be used

| Organization   | Design                         | Standard       | Description   |
|--|--------------------------------|----------------|---|
|  | Suitable for applications acc. | IEC/UL 62368-1 | Audio/video, information and communication technology equipment - Part 1: Safety requirements |

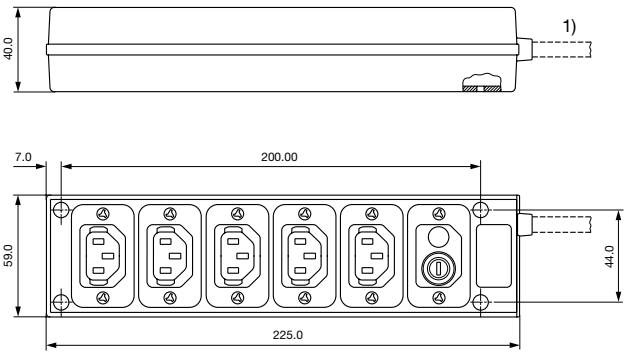
Compliances

The product complies with following Guide Lines

| Identification   | Details  | Initiator   | Description   |
|--|--|-------------|---|
|  | <a href="#">CE declaration of conformity</a>   | SCHURTER AG | The CE marking declares that the product complies with the applicable requirements laid down in the harmonisation of Community legislation on its affixing in accordance with EU Regulation 765/2008. |
|  | <a href="#">UKCA declaration of conformity</a> | SCHURTER AG | The UKCA marking declares that the product complies with the applicable requirements laid down in the British Amendment of Regulation (EC) 765/2008.  |
|  | <a href="#">RoHS</a>                           | SCHURTER AG | Directive RoHS 2011/65/EU, Amendment (EU) 2015/863  |
|  | <a href="#">China RoHS</a>                     | SCHURTER AG | The law SJ / T 11363-2006 (China RoHS) has been in force since 1 March 2007. It is similar to the EU directive RoHS.  |
|  | <a href="#">REACH</a>                          | SCHURTER AG | On 1 June 2007, Regulation (EC) No 1907/2006 on the Registration, Evaluation, Authorization and Restriction of Chemicals 1 (abbreviated as "REACH") entered into force.                               |

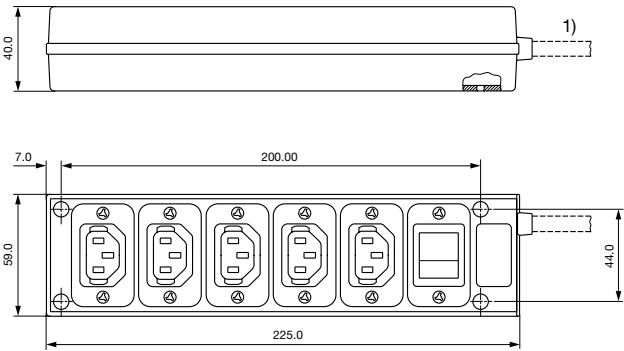
Dimensions [mm]

Stripbloc 4740.3X00



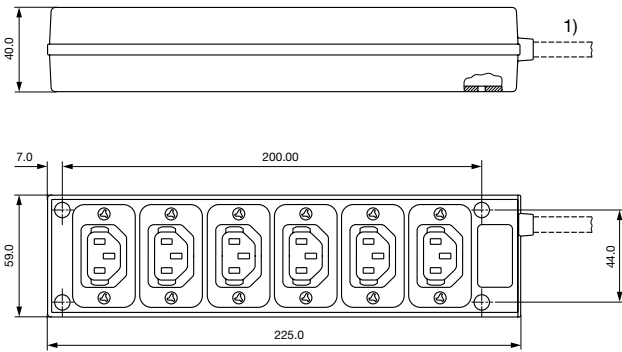
1) Version with plug and cable, see variants  
Mounting holes for 3 mm screws

Stripbloc 4740.6X00

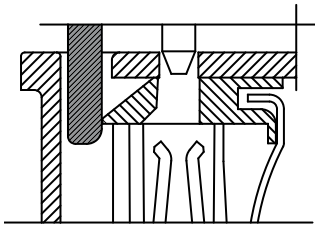


1) Version with plug and cable, see variants  
Mounting holes for 3 mm screws

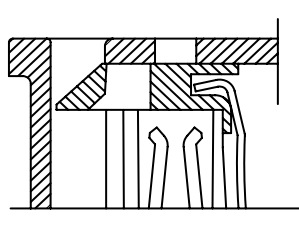
Stripbloc 4740.4X00



1) Version with plug and cable, see variants  
Mounting holes for 3 mm screws



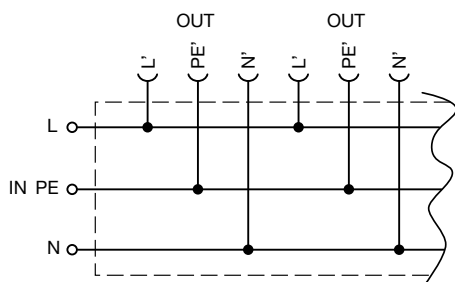
Shutter operation:  
shutters opened by plug insertion



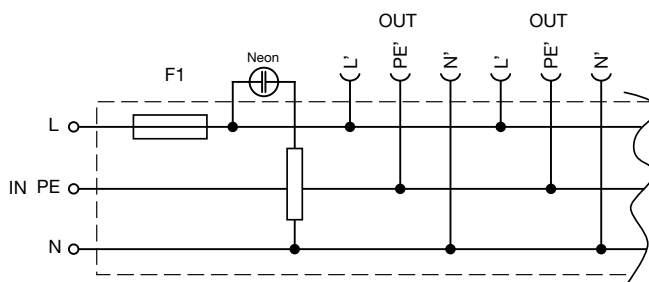
Shutter operation:  
shutters closed when plug is removed

## Diagrams

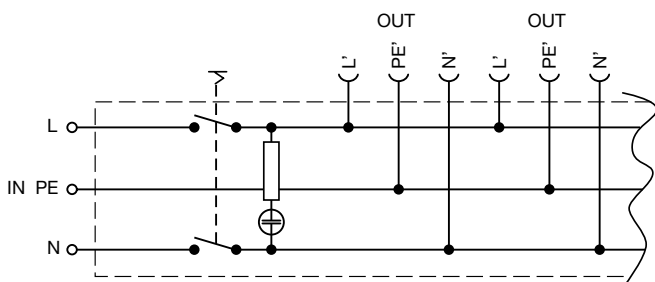
Distribution unit with 6 outlets



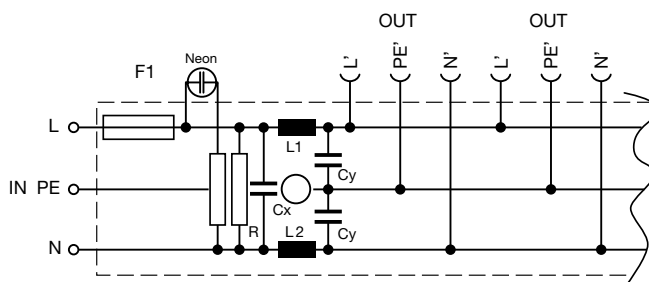
Distribution unit with 5 outlets, fuseholder and neon indication



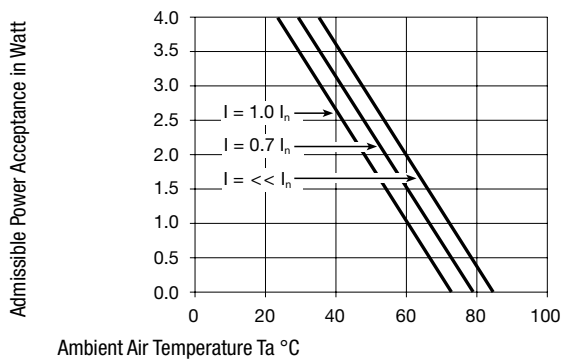
Distribution unit with 5 outlets and rocker switch illuminated



Distribution unit with 5 outlets, fuseholder, neon indication and filter



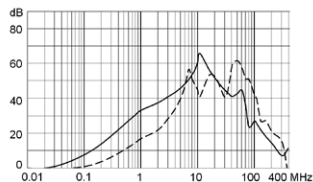
## Derating Curves



## Attenuation loss

Standard version

--- 50Ω differential mode \_\_\_\_ 50Ω common mode



## All Variants

| Connector | Fuseholder | Line Switch | Neon indication | Terminal                                 | Cable     | Order Number |
|-----------|------------|-------------|-----------------|--|-----------|--------------|
| 6         | -          | -           |                 | -  | inlet     | 4740.4000    |
| 6         | -          | -           |                 | Continental Europe CEE7/II (Schuko), 10A | 2 m cable | 4740.4600    |
| 6         | -          | -           |                 | United Kingdom BS 1363 A, 10A            | 2 m cable | 4740.4300    |
| 5         | -          | 2-pole      |                 | -  | inlet     | 4740.6000    |
| 5         | -          | 2-pole      |                 | Continental Europe CEE7/II (Schuko), 10A | 2 m cable | 4740.6600    |
| 5         | -          | 2-pole      |                 | United Kingdom BS 1363 A, 10A            | 2 m cable | 4740.6300    |
| 5         | 1-pole     | -           | ●               | -  | inlet     | 4740.3000    |
| 5         | 1-pole     | -           | ●               | Continental Europe CEE7/II (Schuko), 10A | 2 m cable | 4740.3600    |
| 5         | 1-pole     | -           | ●               | IEC/EN 60320-1/E, 10A                    | 2 m cable | 4740.3800    |
| 5         | 1-pole     | -           | ●               | United Kingdom BS 1363 A, 10A            | 2 m cable | 4740.3300    |
| 5         | 1-pole     | -           | ●               | with line filter 6 A                     | inlet     | 4740.3100    |
| 4         | 1-pole     | 2-pole      | ●               | -  | inlet     | 4740.7000    |

Most Popular.

Availability for all products can be searched real-time: <https://www.schurter.com/en/info-center/support-tools/stock-check-distributors>

- 4740.3100 is with line filter 6A

- Inserted fuse: SP 5 x 20; 10 A / 250VAC, quick acting F, part No. 0001.1014

- Inserted fuse for filter type: SP 5 x 20; 6.3 A / 250VAC, quick acting F, part No. 0001.1012

- Main plug cable acc. country specific standards

## Packaging unit

10 Pcs

## Mating Inlets/Plugs

## Category / Description

[Plug Overview complete](#)



|  |      |
|--|------|
| 4732, Mounting: Power Cord, Plug: IEC E, Cable | 4732 |
| 4735, Mounting: Power Cord, Plug: IEC E, Cable | 4735 |
| 9009, Mounting: Plug: IEC E, Screw clamps      | 9009 |
| 4733, Mounting: Power Cord, Plug: IEC E, Cable | 4733 |
| 4736, Mounting: Power Cord, Plug: IEC E, Cable | 4736 |

...

## Mating Outlets/Connectors

[Appliance Outlet Overview complete](#)



|  |      |
|--|------|
| 4787, Mounting: Screw-on mounting, Appliance Outlet: IEC Solder terminals, 10 A, Suitable for appliances with protection class I     | 4787 |
| 4788, Mounting: Snap-in version, Appliance Outlet: IEC Solder / Quick Connect, 10 A, Suitable for appliances with protection class I | 4788 |
| IEC Appliance Outlet F or H, Screw-on Mounting, Front Side, Solder, PCB or Quick-connect Terminal                                    | 5091 |

[Connector Overview complete](#)



|   |         |
|---|---------|
| 4782 Mounting: Power Cord, 3 x 1 mm <sup>2</sup> / 3 x 18 AWG, Cable, Connector: IEC C13    | 4782    |
| 4785 Mounting: Power Cord, 3 x 1 mm <sup>2</sup> / 3 x 18 AWG, Cable, Connector: IEC C13    | 4785    |
| 4300-06 Mounting: Power Cord, 3 x 1 mm <sup>2</sup> / 3 x 18 AWG, Cable, Connector: IEC C13 | 4300-06 |



[Interconnection Cord Overview complete](#)

|  |           |
|--|-----------|
| Cord Sets 10 A, Interconnection, 2.0 m, IEC H05VV-F3G1.0, black                | 6007.0204 |
| Cord Sets 10 A, Interconnection, 1.0 m, Connector IEC C13, H05VV-F3G1.0, black | 6007.0212 |
| Cord Sets 10 A, Interconnection, 2.0 m, Connector IEC C13, H05VV-F3G1.0, black | 6007.0214 |



[Power Supply Cord Overview complete](#)

|  |           |
|--|-----------|
| Cord Sets 10 A, Europlug, 2.5 m, Connector IEC C13, H05VV-F3G1.0, black          | 6004.0215 |
| Cord Sets 10 A, Europlug, 2.5 m, Connector IEC C13, H05VV-F3G1.0, black          | 6003.0215 |
| Cord Sets 10 A, uninsulated wires, 2.0 m, Connector IEC C13, H05VV-F3G1.0, black | 6000.0224 |
| Cord Sets 10 A, uninsulated wires, 2.0 m, Connector IEC C13, H05VV-F3G1.0, black | 6000.0214 |
| Cord Sets 10 A, United Kingdom, 2.5 m, Connector IEC C13, H05VV-F3G1.0, black    | 6044.0215 |

...



[Power Supply or Interconnection Cord Overview complete](#)

|  |           |
|--|-----------|
| Cord Sets 10 A, United Kingdom, 2.0 m, Connector IEC H05VV-F3G1.0, black | 6044.0204 |
|--|-----------|

# Mouser Electronics

Authorized Distributor

Click to View Pricing, Inventory, Delivery & Lifecycle Information:

[Schurter:](#)

[4740.3000](#) [4740.3100](#) [4740.6000](#) [4740.4000](#) [4740.4600](#)