



FEATURES:

- Low Power Consumption <10mA
- Low Stand by Current <1uA
- Exceptional Stability Over Temp. at 40 to +85°C
- Available over Extended Temp Range
- Low Cost-Compact QFN Plastic Packaging
- Compact Package design

APPLICATIONS:

- CCD Clock for VTR Camera
- Equipment Connected to PCs
- Low Profile Equipment
- Lower Cost Crystal Oscillator Replacement
- Computers and Peripherals
- Portable Electronics (MP3 Players, Games)
- Consumer Electronics such as TV's, DVR's, etc.
- Vibrant, Shock-Prone & Humid Environments for Industrial Equipment
- Demanding Military & Automotive Electronics

STANDARD SPECIFICATIONS:

Parameters		Minimum	Typical	Maximum	Units	Notes
Frequency Range:		1.0	-----	150	MHz	
Operating Temperature:		0	-----	+70	°C	See options
Storage Temperature:		-55	-----	+150	°C	
Overall Frequency Stability*:		-100	-----	+100	ppm	See options
Supply Voltage (Vdd):		+1.8 ~ +3.3			V	See options
Supply Current (no load):	1.0 to 39.9999MHz	-----	3	10	mA	No load RL=∞ T=25°C
	40.0 to 79.9999MHz	-----	4	10		
	80.0 to 124.9999MHz	-----	5	10		
	125.0 to 150MHz	-----	6	10		
Output Voltage:	V _{OH}	0.8*V _{dd}	-----	-----	V	15pF
	V _{OL}	-----	-----	0.2*V _{dd}		
Rise Time:	T _r	-----	1.3	2.0	ns	15pF; T=25°C 20%/80%*VDD
Fall Time:	T _f	-----	1.3	2.0		
Output Load:		15pF max / 10kΩ min.			pF	See options
Symmetry:		45	-----	55	%	@1/2V _{dd}
Startup Time:		-----	1.5	3.0	ms	
Disable Time:		-----	20	100	ns	
Disable Stand-by Current:		-----	-----	1	uA	
Tri-state Function (Stand-by) :		"1" (VIH≥0.75*V _{dd}) or Open: Oscillation "0" (VIH<0.25*V _{dd}) : Hi Z			V	
Cycle to cycle jitter:		-----	95	-----	ps	F=100MHz
Aging:		-5.0	-----	+5.0	ppm	First year

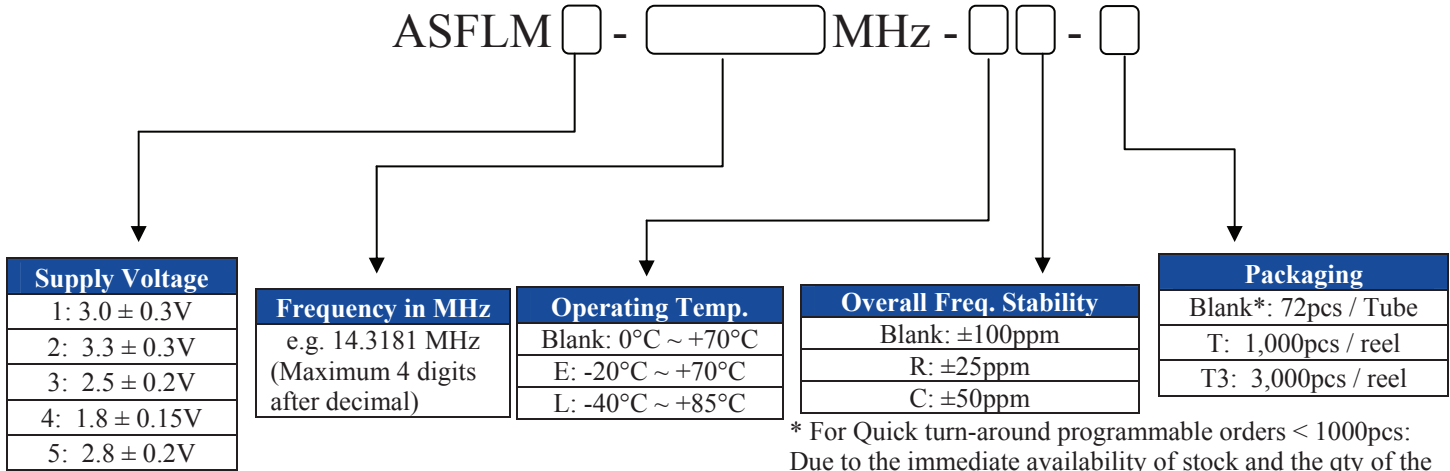
Absolute Maximum Ratings

Item	Minimum	Maximum	Unit	Condition
Supply Voltage	-0.3	+4.0	V	
Input Voltage	-0.3	V _{dd} +0.3	V	
Junction Temp.	-----	+150	°C	
Soldering Temp.	-----	+260	°C	40sec max
ESD			V	
HBM		2,000		
MM		200		
CDM		500		



PART NUMBER FOR PROGRAMMED ORDER S

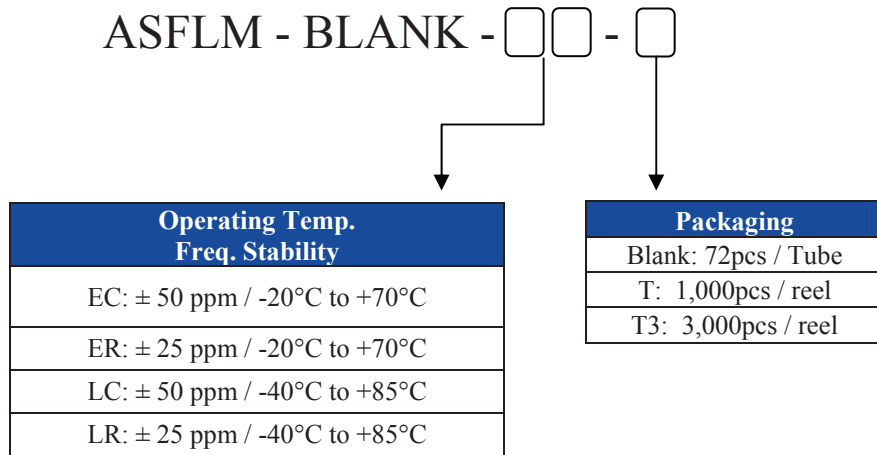
Programmed Orders (Quantity > 1,000pcs)



* For Quick turn-around programmable orders < 1000pcs: Due to the immediate availability of stock and the qty of the order, the parts may be delivered as BULK: Cut Tape, Loose parts in Antistatic Bag or in Tube(s). The MOQ per the series will still apply for Tube packaging.

Un-Programmed Orders (Quantity < 1,000pcs)

Blank un-programmed oscillators are available for quick turn engineering requirements. Please call ABRACON for more information.

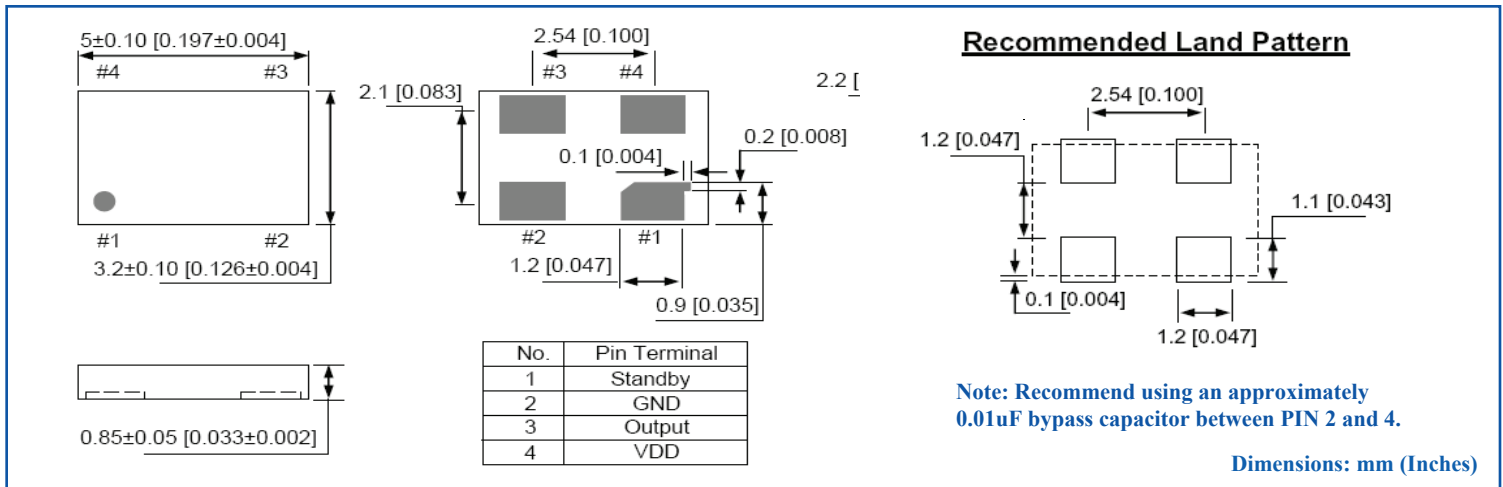




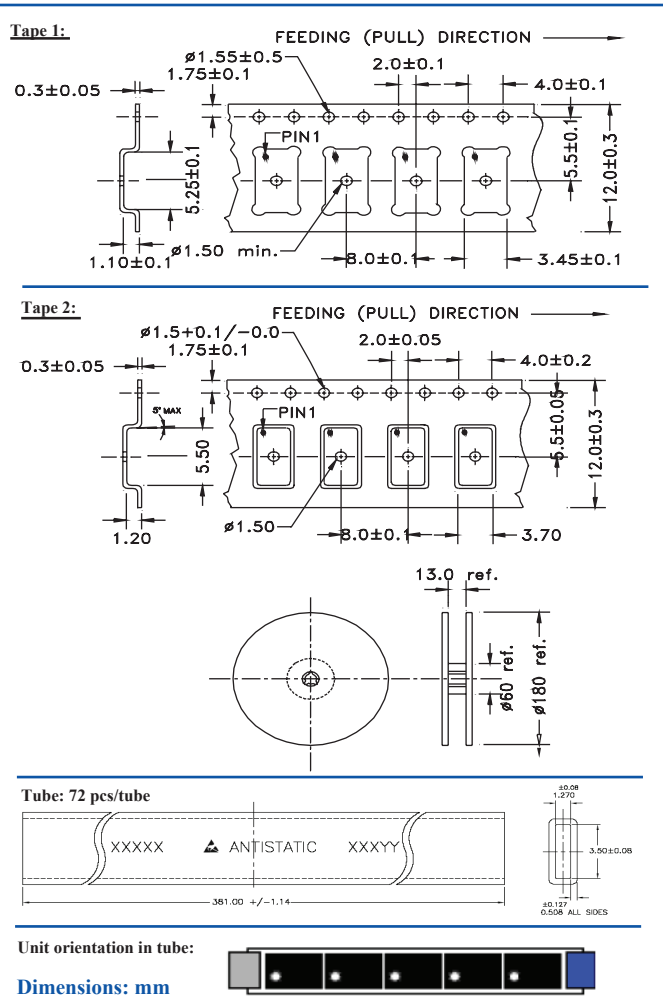
ASFLM

Pb | RoHS/RoHS II Compliant

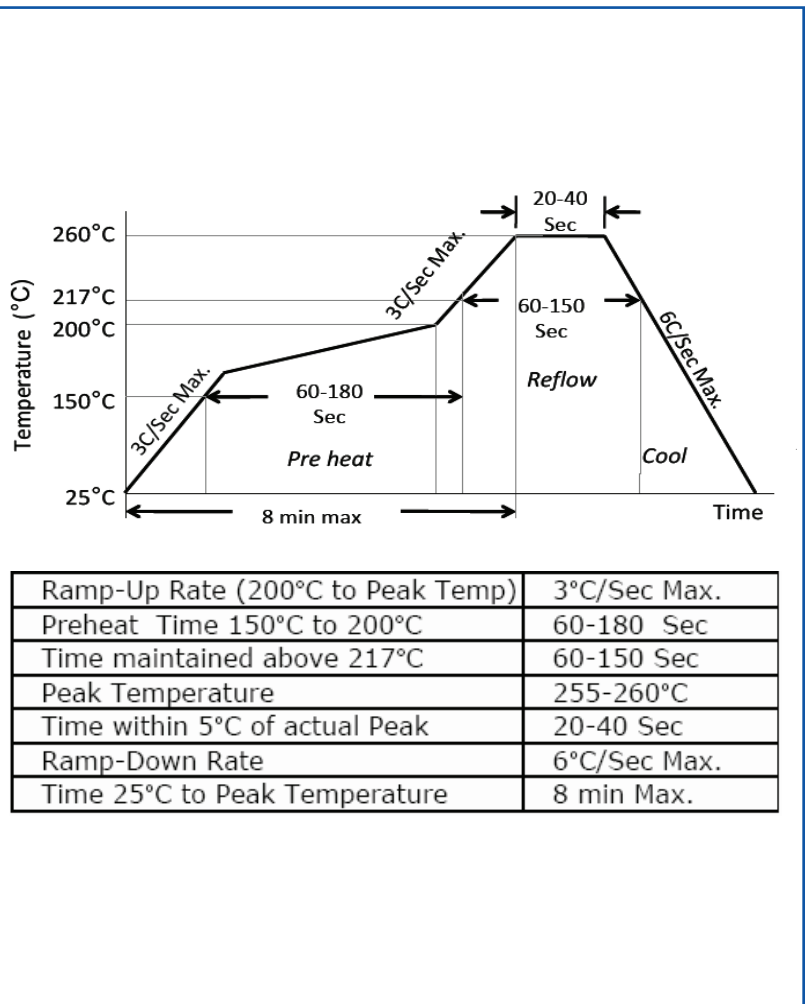
OUTLINE DRAWING:



TAPE & REEL:



REFLOW PROFILE:



Need a test socket for the ASFLM Series? To view compatible **PRECISION TEST & BURN-IN SOCKETS** for these parts, [click here](#). P/N: **AXS-5032-04-07**

ATTENTION: Abracon LLC's products are COTS – Commercial-Off-The-Shelf products; suitable for Commercial, Industrial and, where designated, Automotive Applications. Abracon's products are not specifically designed for Military, Aviation, Aerospace, Life-dependent Medical applications or any application requiring high reliability where component failure could result in loss of life and/or property. For applications requiring high reliability and/or presenting an extreme operating environment, written consent and authorization from Abracon LLC is required. Please contact Abracon LLC for more information.

Mouser Electronics

Authorized Distributor

Click to View Pricing, Inventory, Delivery & Lifecycle Information:

ABRACON:

[ASFLM-MEMS BLANK OSCILLATOR](#) [ASFLM1-1.8432MHZ-L-C-T](#) [ASFLM1-10.000MHZ-L-C-T](#) [ASFLM1-11.0592MHZ-L-C-T](#) [ASFLM1-12.000MHZ-L-C-T](#) [ASFLM1-14.31818MHZ-L-C-T](#) [ASFLM1-14.7456MHZ-L-C-T](#) [ASFLM1-16.000MHZ-L-C-T](#) [ASFLM1-18.432MHZ-L-C-T](#) [ASFLM1-20.000MHZ-L-C-T](#) [ASFLM1-24.000MHZ-L-C-T](#) [ASFLM1-24.576MHZ-L-C-T](#) [ASFLM1-25.000MHZ-L-C-T](#) [ASFLM1-27.000MHZ-L-C-T](#) [ASFLM1-3.6864MHZ-L-C-T](#) [ASFLM1-30.000MHZ-L-C-T](#) [ASFLM1-32.000MHZ-L-C-T](#) [ASFLM1-33.000MHZ-L-C-T](#) [ASFLM1-33.333MHZ-L-C-T](#) [ASFLM1-4.000MHZ-L-C-T](#) [ASFLM1-40.000MHZ-L-C-T](#) [ASFLM1-48.000MHZ-L-C-T](#) [ASFLM1-50.000MHZ-L-C-T](#) [ASFLM1-8.000MHZ-L-C-T](#) [ASFLM1-7.3728MHZ-L-C-T](#) [ASEMB- ADAPTER-KIT](#) [ASFLMB- ADAPTER-KIT](#) [ASFLMPC- ADAPTER-KIT](#) [ASFLMPHC- ADAPTER-KIT](#) [ASFLMPLP- ADAPTER-KIT](#) [ASFLMPLV- ADAPTER-KIT](#) [ASVMB- ADAPTER-KIT](#) [ASVMPC- ADAPTER-KIT](#) [ASVMPHC- ADAPTER-KIT](#) [ASVMPLP- ADAPTER-KIT](#) [MEMSPeod Pro II Oscillator Programmer](#) [ASFLM1-3.6864MHZ-C-T](#) [ASFLM1-14.31818MHZ-C-T](#) [ASFLM1-40.000MHZ-C-T](#) [ASFLM1-32.000MHZ-C-T](#) [ASFLM1-30.000MHZ-C-T](#) [ASFLM1-18.432MHZ-C-T](#) [ASFLM1-12.000MHZ-C-T](#) [ASFLM1-8.000MHZ-C-T](#) [ASFLM1-25.000MHZ-C-T](#) [ASFLM1-11.0592MHZ-C-T](#) [ASFLM1-33.000MHZ-C-T](#) [ASFLM1-10.000MHZ-C-T](#) [ASFLM1-7.3728MHZ-C-T](#) [ASFLM1-24.576MHZ-C-T](#) [ASFLM1-48.000MHZ-C-T](#) [ASFLM1-50.000MHZ-C-T](#) [ASFLM1-24.000MHZ-C-T](#) [ASFLM1-4.000MHZ-C-T](#) [ASFLM1-14.7456MHZ-C-T](#) [ASFLM1-27.000MHZ-C-T](#) [ASFLM1-16.000MHZ-C-T](#) [ASFLM1-33.333MHZ-C-T](#) [ASFLM1-20.000MHZ-C-T](#) [ASFLM1-1.8432MHZ-C-T](#) [ASFLM1-125.000MHZ-LC-T](#) [ASFLM2-27.000MHZ-LR-T](#) [ASFLM2-25.000MHZ-R-T](#) [ASFLM2-12.288MHZ-LC-T](#) [ASFLM4-125.000MHZ-LC-T](#) [ASFLM1-12.000MHZ-T](#) [ASFLMB-125.000MHZ-LR-T](#) [ASFLM1-66.6666MHZ-LC-T](#) [ASFLM1-100.000MHZ-LC-T](#)