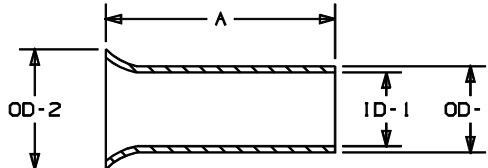


PART NO	WIRE RANGE AWG (mm ²)	STRIP LENGTH (mm)	A	ID-1	OD-1	OD-2	INSTALL. TOOLS
F73-5-M	24 (0,25)	7/32 (5,0)	0.20 (5,0)	0.03 (0,8)	0.04 (1,1)	0.07 (1,7)	CT-1002
F73-7-M		9/32 (7,0)	0.28 (7,0)	0.03 (0,8)	0.04 (1,1)	0.07 (1,7)	
F74-5-M	24 (0,34)	7/32 (5,0)	0.20 (5,0)	0.04 (0,9)	0.05 (1,2)	0.07 (1,8)	CT-1002
F74-7-M		9/32 (7,0)	0.28 (7,0)	0.04 (0,9)	0.05 (1,2)	0.07 (1,8)	
F75-6-M	22 (0,50)	1/4 (6,0)	0.24 (6,0)	0.04 (1,0)	0.05 (1,3)	0.08 (2,1)	CT-1002
F75-8-M		5/16 (8,0)	0.31 (8,0)	0.04 (1,0)	0.05 (1,3)	0.08 (2,1)	
F75-10-M	20 (0,75)	13/32 (10,0)	0.39 (10,0)	0.04 (1,0)	0.05 (1,3)	0.08 (2,1)	CT-1002
F76-6-M		1/4 (6,0)	0.24 (6,0)	0.05 (1,1)	0.06 (1,5)	0.09 (2,3)	
F76-8-M	20 (0,75)	5/16 (8,0)	0.31 (8,0)	0.05 (1,1)	0.06 (1,5)	0.09 (2,3)	CT-1002
F76-10-M		13/32 (10,0)	0.39 (10,0)	0.05 (1,1)	0.06 (1,5)	0.09 (2,3)	
F76-12-M	18 (1,1)	15/32 (12,0)	0.47 (12,0)	0.05 (1,2)	0.06 (1,5)	0.09 (2,3)	CT-1003
F77-6-M		1/4 (6,0)	0.24 (6,0)	0.06 (1,4)	0.07 (1,7)	0.10 (2,5)	
F77-7-M	18 (1,1)	9/32 (7,0)	0.28 (7,0)	0.06 (1,4)	0.07 (1,7)	0.10 (2,5)	CT-1003
F77-8-M		5/16 (8,0)	0.31 (8,0)	0.06 (1,4)	0.07 (1,7)	0.10 (2,5)	
F77-10-M	16 (1,50)	13/32 (10,0)	0.39 (10,0)	0.06 (1,4)	0.07 (1,7)	0.10 (2,5)	CT-1003
F77-12-M		15/32 (12,0)	0.47 (12,0)	0.06 (1,4)	0.07 (1,7)	0.10 (2,5)	
F78-7-M	16 (1,50)	9/32 (7,0)	0.28 (7,0)	0.07 (1,7)	0.08 (2,0)	0.11 (2,8)	CT-1003
F78-8-M		5/16 (8,0)	0.31 (8,0)	0.07 (1,7)	0.08 (2,0)	0.11 (2,8)	
F78-10-M	16 (1,50)	13/32 (10,0)	0.39 (10,0)	0.07 (1,7)	0.08 (2,0)	0.11 (2,8)	CT-1003
F78-12-M		15/32 (12,0)	0.47 (12,0)	0.07 (1,7)	0.08 (2,0)	0.11 (2,8)	
F78-15-M	16 (1,50)	19/32 (15,0)	0.59 (15,0)	0.07 (1,7)	0.08 (2,0)	0.11 (2,8)	CT-1003
F78-18-M		23/32 (18,0)	0.71 (18,0)	0.07 (1,7)	0.08 (2,0)	0.11 (2,8)	
F78-20-M	16 (1,50)	25/32 (20,0)	0.79 (20,0)	0.07 (1,7)	0.08 (2,0)	0.11 (2,8)	CT-1003
F78-20-M		25/32 (20,0)	0.79 (20,0)	0.07 (1,7)	0.08 (2,0)	0.11 (2,8)	

PART NO	WIRE RANGE AWG (mm ²)	STRIP LENGTH (mm)	A	ID-1	OD-1	OD-2	INSTALL. TOOLS
F80-7-M	14 (2,50)	9/32 (7,0)	0.28 (7,0)	0.09 (2,2)	0.10 (2,5)	0.13 (3,4)	CT-1002
F80-8-M		5/16 (8,0)	0.31 (8,0)	0.09 (2,2)	0.10 (2,5)	0.13 (3,4)	
F80-10-M	14 (2,50)	13/32 (10,0)	0.39 (10,0)	0.09 (2,2)	0.10 (2,5)	0.13 (3,4)	CT-1002
F80-12-M		15/32 (12,0)	0.47 (12,0)	0.09 (2,2)	0.10 (2,5)	0.13 (3,4)	
F80-15-M	14 (2,50)	19/32 (15,0)	0.59 (15,0)	0.09 (2,2)	0.10 (2,5)	0.13 (3,4)	CT-1002
F80-18-M		23/32 (18,0)	0.71 (18,0)	0.09 (2,2)	0.10 (2,5)	0.13 (3,4)	
F80-20-M	14 (2,50)	25/32 (20,0)	0.79 (20,0)	0.09 (2,2)	0.10 (2,5)	0.13 (3,4)	CT-1002
F81-9-M		11/32 (8,0)	0.35 (8,0)	0.11 (2,8)	0.13 (3,2)	0.16 (4,0)	
F81-10-M	12 (4)	13/32 (10,0)	0.39 (10,0)	0.11 (2,8)	0.13 (3,2)	0.16 (4,0)	CT-1003
F81-12-M		15/32 (12,0)	0.47 (12,0)	0.11 (2,8)	0.13 (3,2)	0.16 (4,0)	
F81-15-M	12 (4)	19/32 (15,0)	0.59 (15,0)	0.11 (2,8)	0.13 (3,2)	0.16 (4,0)	CT-1003
F81-18-M		23/32 (18,0)	0.71 (18,0)	0.11 (2,8)	0.13 (3,2)	0.16 (4,0)	
F81-20-M	10 (6)	25/32 (20,0)	0.79 (20,0)	0.11 (2,8)	0.13 (3,2)	0.16 (4,0)	CT-1003
F82-10-M		13/32 (10,0)	0.39 (10,0)	0.14 (3,5)	0.15 (3,9)	0.19 (4,7)	
F82-12-M	10 (6)	15/32 (12,0)	0.47 (12,0)	0.14 (3,5)	0.15 (3,9)	0.19 (4,7)	CT-1003
F82-15-M		19/32 (15,0)	0.59 (15,0)	0.14 (3,5)	0.15 (3,9)	0.19 (4,7)	
F82-18-M	10 (6)	23/32 (18,0)	0.71 (18,0)	0.14 (3,5)	0.15 (3,9)	0.19 (4,7)	CT-1003
F82-20-M		25/32 (20,0)	0.79 (20,0)	0.14 (3,5)	0.15 (3,9)	0.19 (4,7)	
F83-12-D	8 (10)	15/32 (12,0)	0.47 (12,0)	0.18 (4,5)	0.19 (4,9)	0.23 (5,8)	CT-1004
F83-15-D		19/32 (15,0)	0.59 (15,0)	0.18 (4,5)	0.19 (4,9)	0.23 (5,8)	
F83-18-D	8 (10)	23/32 (18,0)	0.71 (18,0)	0.18 (4,5)	0.19 (4,9)	0.23 (5,8)	CT-1004
F83-20-D		25/32 (20,0)	0.79 (20,0)	0.18 (4,5)	0.19 (4,9)	0.23 (5,8)	
F83-25-D	8 (10)	31/32 (25,0)	0.98 (25,0)	0.18 (4,5)	0.19 (4,9)	0.23 (5,8)	CT-1004
F83-25-D		31/32 (25,0)	0.98 (25,0)	0.18 (4,5)	0.19 (4,9)	0.23 (5,8)	

PART NO	WIRE RANGE AWG (mm ²)	STRIP LENGTH (mm)	A	ID-1	OD-1	OD-2	INSTALL. TOOLS
F84-12-TL	6 (16)	15/32 (12,0)	0.47 (12,0)	0.23 (5,8)	0.24 (6,2)	0.30 (7,5)	CT-1004
F84-15-TL		19/32 (15,0)	0.59 (15,0)	0.23 (5,8)	0.24 (6,2)	0.30 (7,5)	
F84-18-TL	6 (16)	23/32 (18,0)	0.71 (18,0)	0.23 (5,8)	0.24 (6,2)	0.30 (7,5)	CT-1004
F84-20-TL		25/32 (20,0)	0.79 (20,0)	0.23 (5,8)	0.24 (6,2)	0.30 (7,5)	
F84-25-TL	6 (16)	31/32 (25,0)	0.98 (25,0)	0.23 (5,8)	0.24 (6,2)	0.30 (7,5)	CT-1004
F84-32-TL		1 1/4 (32,0)	1.26 (32,0)	0.23 (5,8)	0.24 (6,2)	0.30 (7,5)	
F85-12-C	4 (25)	15/32 (12,0)	0.47 (12,0)	0.28 (7,3)	0.30 (7,7)	0.37 (9,5)	CT-1005
F85-15-C		19/32 (15,0)	0.59 (15,0)	0.28 (7,3)	0.30 (7,7)	0.37 (9,5)	
F85-18-C	4 (25)	23/32 (18,0)	0.71 (18,0)	0.29 (7,3)	0.30 (7,7)	0.37 (9,5)	CT-1005
F85-25-C		31/32 (25,0)	0.98 (25,0)	0.29 (7,3)	0.30 (7,7)	0.37 (9,5)	
F85-32-C	4 (25)	1 1/4 (32,0)	1.26 (32,0)	0.29 (7,3)	0.30 (7,7)	0.37 (9,5)	CT-1005
F86-18-C		23/32 (18,0)	0.71 (18,0)	0.33 (8,3)	0.34 (8,7)	0.43 (11,0)	
F86-20-C	2 (35)	25/32 (20,0)	0.79 (20,0)	0.33 (8,3)	0.34 (8,7)	0.43 (11,0)	CT-1006
F86-25-C		31/32 (25,0)	0.98 (25,0)	0.33 (8,3)	0.34 (8,7)	0.43 (11,0)	
F86-32-C	2 (35)	1 1/4 (32,0)	1.26 (32,0)	0.33 (8,3)	0.34 (8,7)	0.43 (11,0)	CT-1006
F87-18-C		23/32 (18,0)	0.71 (18,0)	0.41 (10,3)	0.43 (10,9)	0.51 (13,0)	
F87-22-C	1 (50)	7/8 (22,0)	0.87 (22,0)	0.41 (10,3)	0.43 (10,9)	0.51 (13,0)	CT-1006
F87-25-C		31/32 (25,0)	0.98 (25,0)	0.41 (10,3)	0.43 (10,9)	0.51 (13,0)	
F87-32-C	1 (50)	1 1/4 (32,0)	1.26 (32,0)	0.41 (10,3)	0.43 (10,9)	0.51 (13,0)	CT-1006
F87-32-C		1 1/4 (32,0)	1.26 (32,0)	0.41 (10,3)	0.43 (10,9)	0.51 (13,0)	

- NOTES:
1. MATERIAL - COPPER, TIN PLATED
2. DIMENSIONS IN BRACKETS ARE IN mm OR mm²
3. FOR TOLERANCING REFER TO DIN 46228 PART 1
4. PACKAGE QTY: -C=100
-TL=250
-D=500
-M=1000



CAD FILENAME/LAYERS A41670_03
PANDUIT CORP TINLEY PARK, ILLINOIS
FERRULE - NON-INSULATED

REV	DATE	BY	CHK	DESCRIPTION	ECN #	PM	CUST	DATE	SKB	SCALE	DWG NO.	DWG SIZE
03	1/01	EJS		ADDED PACKAGE CODE TO PART NUMBER ADDED NOTE 4								
02	3/99	JKD	SKB	WIRE RANGE FOR CT-1003 TOOL WAS 14-8 AWG	07519	TRO	JCJ					
01	3/99	JKD	SKB	WIRE RANGE WAS 22 FOR F74-5 & -7, 20 FOR F75-6, -8 & -10	07489	TRO	JCJ					
00	2/99	JKD	SKB	RELEASED	07459	TRO	JCJ	DATE 2/10/99				

UNLESS OTHERWISE SPECIFIED, DIMENSIONAL TOLERANCES ARE:
(.X) ±
(.XX) ±
ANGLES ±

UNLESS OTHERWISE SPECIFIED, ALL DIMENSIONS ARE GIVEN IN INCHES, THIRD ANGLE PROJECTION

DRAWN BY JKD MAT'L: NONE
DATE 2/10/99
SCALE NONE
DRAWING NO. A41670 DWG SIZE B

Mouser Electronics

Authorized Distributor

Click to View Pricing, Inventory, Delivery & Lifecycle Information:

[Panduit:](#)

[F85-15-C](#)