

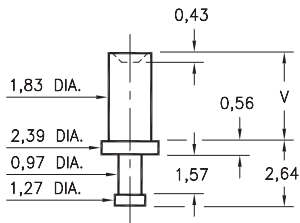
# MALE PCB PINS

## SOLDER TERMINAL TURRETS

### 2304

2304-X-00-XX-00-00-07-0

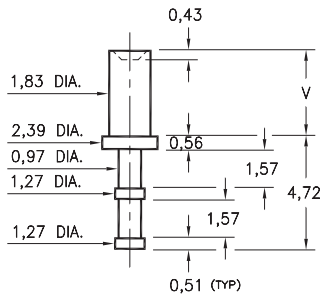
Swage mount in 1,93 hole



### 2305

2305-X-00-XX-00-00-07-0

Swage mount in 1,93 hole

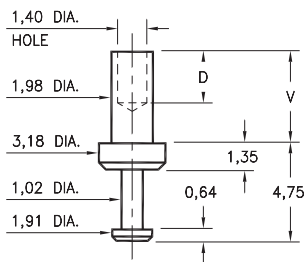


Basic Part Number	Board Thickness	Length V
230X-1	0,79	1,30
230X-2	1,57	2,08
230X-3	2,39	2,87
230X-4	3,18	3,68

### 2503

2503-X-00-XX-00-00-07-0

Swage mount in 2,08 hole

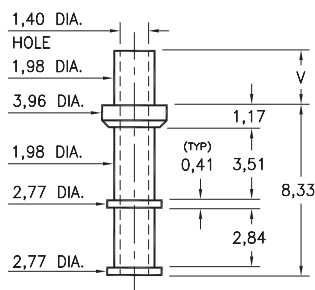


Basic Part Number	Board Thickness	Length V	Depth D
2503-1	0,79	1,98	1,72
2503-2	1,57	2,77	2,49
2503-3	2,39	3,58	2,49
2503-4	3,18	4,39	2,49

### 2704

2704-X-00-XX-00-00-07-0

Swage mount in 2,08 hole

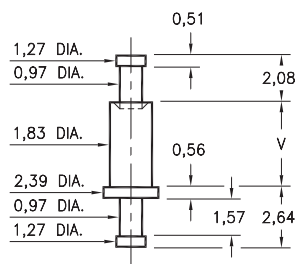


Basic Part Number	Board Thickness	Length V
2704-1	0,79	1,91
2704-2	1,57	2,67
2704-3	2,39	3,43
2704-4	3,18	4,19

### 2306

2306-X-00-XX-00-00-07-0

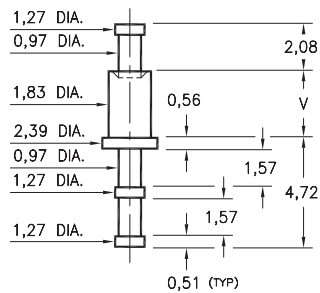
Swage mount in 1,93 hole



### 2307

2307-X-00-XX-00-00-07-0

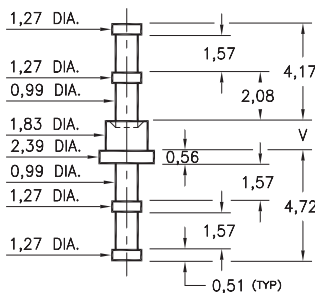
Swage mount in 1,93 hole



### 2311

2311-X-00-XX-00-00-07-0

Swage mount in 1,93 hole



Basic Part Number	Board Thickness	Length V
23XX-1	0,79	1,30
23XX-2	1,57	2,08
23XX-3	2,39	2,87
23XX-4	3,18	3,68

#### SPECIFICATIONS:

**Pin Material:** Brass Alloy 360, 1/2 Hard  
(Swage pins are annealed)

**Dimensions:** Millimeters

**Tolerances On:** Lengths:  $\pm 0,13$   
Diameters:  $\pm 0,051$   
Angles:  $\pm 2^\circ$



ORDER CODE: XXXX - X - 00 - XX - 00 - 00 - 07 - 0

BASIC PART #

SPECIFY PIN FINISH:

- 01 5,08μm TIN/LEAD OVER NICKEL
- ◆ 80 5,08μm TIN OVER NICKEL (RoHS)
- ◆ 44 7,62μm SILVER OVER COPPER (RoHS)
- 50 7,62μm ELECTRO-SOLDER (60/40 SnPb)



# Mouser Electronics

Authorized Distributor

Click to View Pricing, Inventory, Delivery & Lifecycle Information:

Mill-Max:

[2305-2-00-44-00-00-07-0](#) [2704-2-00-00-00-00-07-0](#)