

REVISIONS			
SYM	ZONE	ECN, ERN NO.	DATE APPRD.
A		PROPOSAL	SEP.22.08 A.G
B		UPDATED	MAR.11.09 A.G
C		ADD GENERAL TOLERANCES	JAN.06.11 A.G
D		MODIFY DIMENSION	MAY.13.13 J.SI

MATERIAL NOTES:

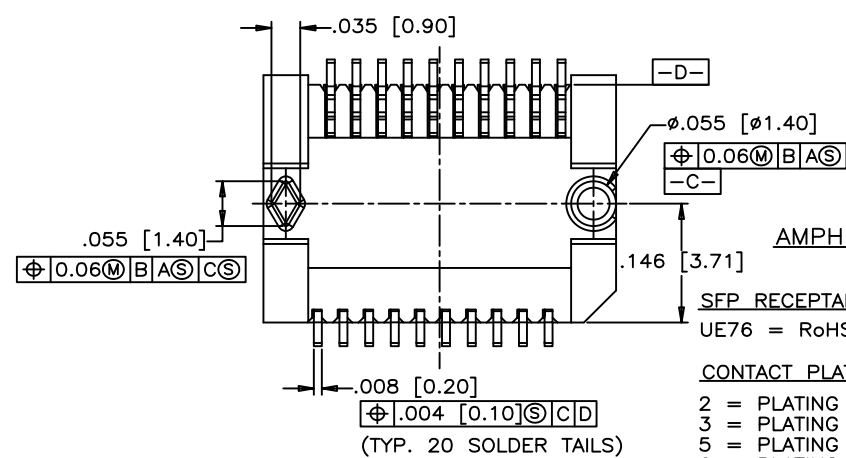
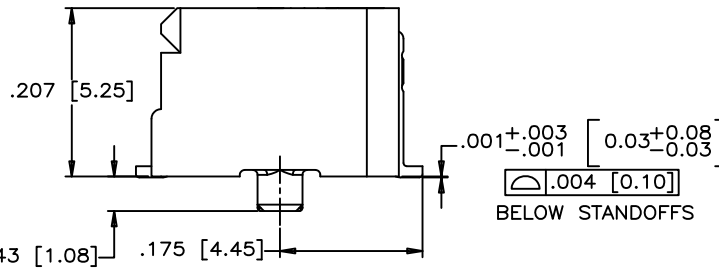
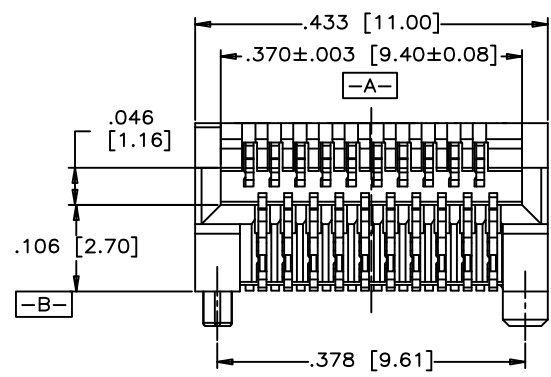
PLASTIC HOUSING:
HIGH TEMPERATURE LCP
FLAMMABILITY RATING UL94V-0.

CONTACTS:

- PHOSPHOR BRONZE
- PLATING OPTION 2:
30µ" [0.76 µm] MIN. GOLD ON MATING AREA AND 2 µ" (0.05 µm) GOLD FLASH PLATING ON TERMINATION OVER 50µ" [1.27 µm] MIN. NICKEL UNDER LAYER.
- PLATING OPTION 3:
30µ" [0.76 µm] MIN. GOLD ON MATING AREA AND 150-300 µ" (3.81-7.62 µm) MIN. LOW WHISKER MATTE TIN PLATING ON TERMINATION OVER 50µ" [1.27 µm] MIN. NICKEL UNDER LAYER.
- PLATING OPTION 5:
15µ" [0.38 µm] MIN. GOLD ON MATING AREA AND 2 µ" (0.05 µm) GOLD FLASH PLATING ON TERMINATION OVER 50µ" [1.27 µm] MIN. NICKEL UNDER LAYER.
- PLATING OPTION 6:
15µ" [0.38 µm] MIN. GOLD ON MATING AREA AND 150-300 µ" (3.81-7.62 µm) MIN. LOW WHISKER MATTE TIN PLATING ON TERMINATION OVER 50µ" [1.27 µm] MIN. NICKEL UNDER LAYER.
- LUBRICANT OPTION: LUBRICANT CAN BE ADDED ON THE CONTACTS MATING AREA (SEE P/N FOR THE OPTION)

PACKAGING:
TAPE AND REEL.

TEMPERATURE RANGE:
-40°C TO +85°C



AMPHENOL PART NUMBER CONFIGURATION

UE76 - A 20 - X 0 0 X T

- SFP RECEPTALE
- UE76 = RoHS COMPLIANT
- CONTACT PLATING
- LUBRICANT OPTION ON MATING AREA
- 0 = NO
- 1 = YES
- 2 = PLATING OPTION 2 (SEE MATERIAL NOTES)
- 3 = PLATING OPTION 3 (SEE MATERIAL NOTES)
- 5 = PLATING OPTION 5 (SEE MATERIAL NOTES)
- 6 = PLATING OPTION 6 (SEE MATERIAL NOTES)

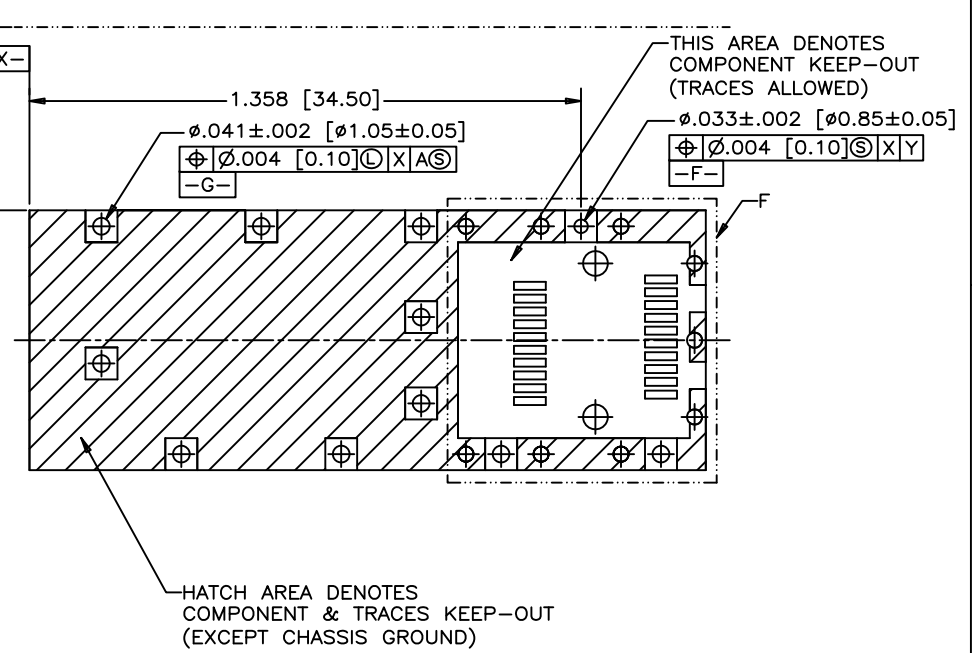
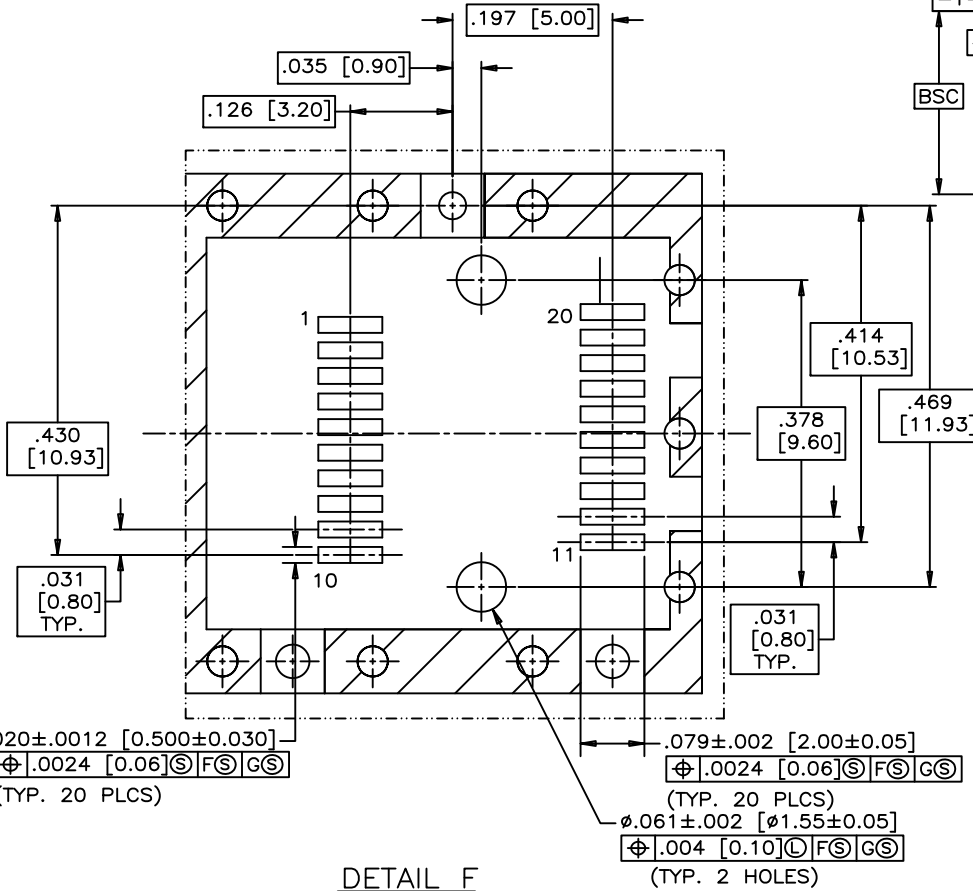
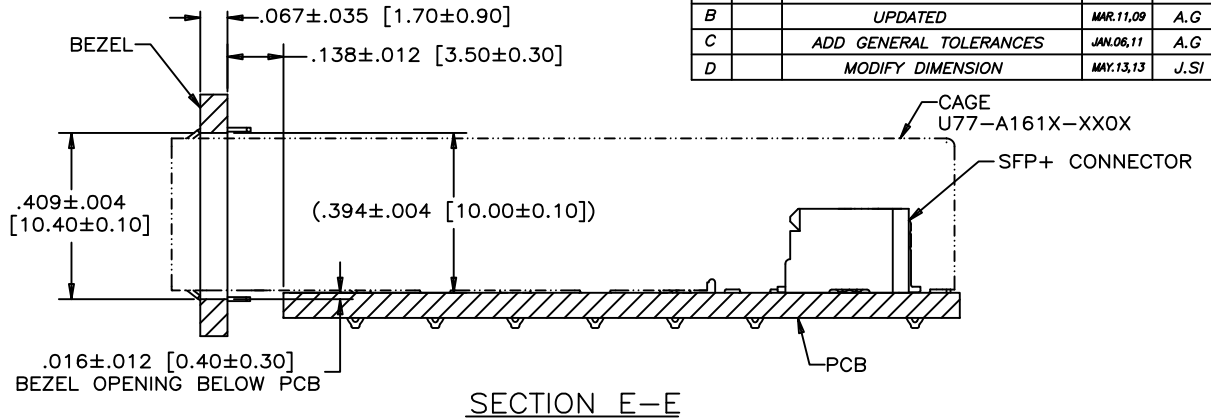
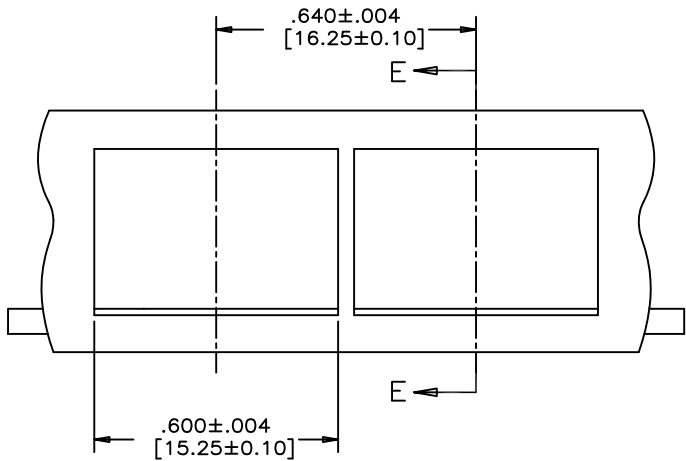
GENERAL TOLERANCES		
DECIMALS	INCH	MILLIMETERS
	X.XX±0.014	X.X±0.35
	X.XXX±0.010	X.XX±0.25
ANGLES	X°±1°	X'X'±0.5'

DRAWN	JaneZ	DATE	SEP.22.08
DESIGNED			
CHECKED	J.SI	DATE	SEP.22.08
I. E. APPRD.			
Q. A. APPRD.			
DWG. APPRD.	A.G	DATE	SEP.22.08
ENG. REL. NO.			
REF.			
DIMENSIONS ARE IN	INCHES [mm]	CODE ID. NO.	03554

Amphenol High Speed Interconnects			
A Division of Amphenol Corp. www.amphenol-highspeed.com			
TITLE			
SFP+ 20 POSITION HIGH SPEED CONNECTOR RECEPTACLE FIXED BOARD, RIGHT ANGLE SMT OPTIONAL PLATING AND LUBRICANT ON MATING			
DWG	DRAWING NO.	REV.	
A	P-UE76-A20-X00XX	D	
SCALE	4/1	WT.	
SURF.		SHEET	1 OF 3

THIS DOCUMENT CONTAINS PROPRIETARY INFORMATION AND SUCH INFORMATION MAY NOT BE DISCLOSED TO OTHERS FOR ANY PURPOSE OR USED FOR MANUFACTURING PURPOSES WITHOUT WRITTEN PERMISSION FROM AMPHENOL CANADA CORP.

REVISIONS				
SYM	ZONE	ECN, ERN NO.	DATE	APPRD.
A		PROPOSAL	SEP.22.08	A.G
B		UPDATED	MAR.11.09	A.G
C		ADD GENERAL TOLERANCES	JAN.06.11	A.G
D		MODIFY DIMENSION	MAY.13.13	J.SI



DRAWN	JaneZ	DATE	SEP.22.08
DESIGNED			
CHECKED	J.SI	DATE	SEP.22.08

Amphenol High Speed Interconnects
A Division of Amphenol Corp. www.amphenol-highspeed.com

TITLE
SFP+ 20 POSITION HIGH SPEED CONNECTOR
RECEPTACLE FIXED BOARD, RIGHT ANGLE SMT
OPTIONAL PLATING AND LUBRICANT ON MATING

GENERAL TOLERANCES		
DECIMALS	INCH	MILLIMETERS
	X.XX ± 0.004	X.X ± 0.10
	X.XXX ± 0.002	X.XX ± 0.05
ANGLES	X° ± 1°	X° ± 0.5°

DWG	A	DRAWING NO.	P-UE76-A20-X00XX	REV.	D
SCALE	2/1	WT.		SURF.	
			SHEET	2 OF 3	

THIS DOCUMENT CONTAINS PROPRIETARY INFORMATION AND SUCH INFORMATION
MAY NOT BE DISCLOSED TO OTHERS FOR ANY PURPOSE OR USED FOR MANUFACTURING
PURPOSES WITHOUT WRITTEN PERMISSION FROM AMPHENOL CANADA CORP.

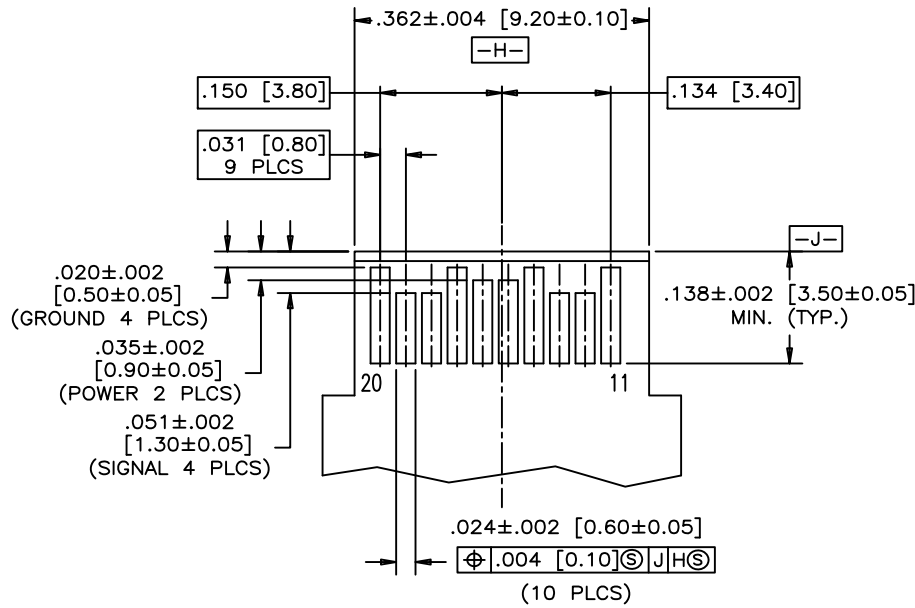
A B C D E F

1 2 3 4

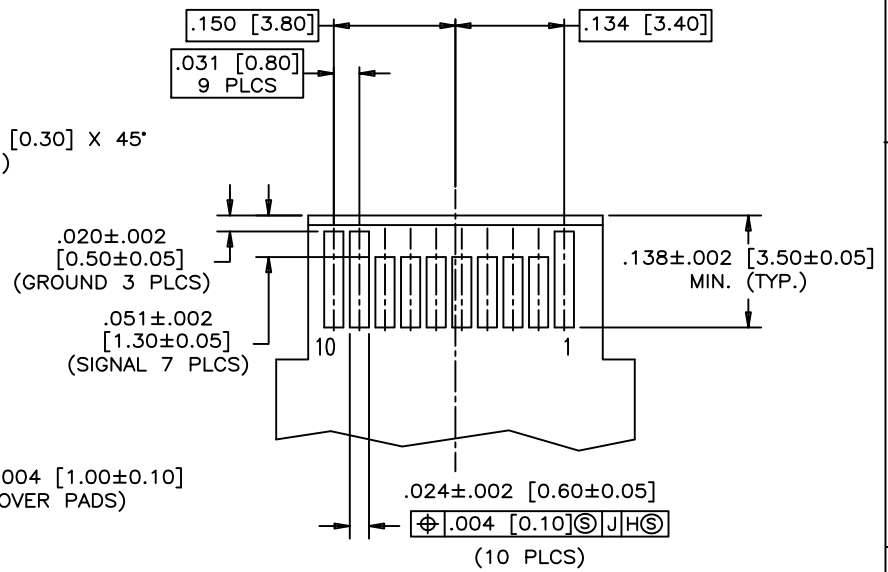
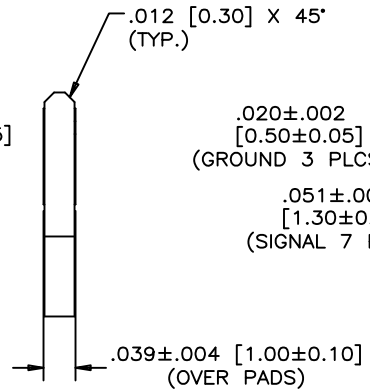
SECTION E-E

DETAIL F

REVISIONS				
SYM	ZONE	ECN, ERN NO.	DATE	APPRD.
A		PROPOSAL	SEP.22.08	A.G
B		UPDATED	MAR.11.09	A.G
C		ADD GENERAL TOLERANCES	JAN.06.11	A.G
D		MODIFY DIMENSION	MAY.13.13	J.SI



TOP VIEW OF BOARD



BOTTOM VIEW OF BOARD

RECOMMENDED LAYOUT DETAIL
MATING TRANSCEIVER PCB

THIS DOCUMENT CONTAINS PROPRIETARY INFORMATION AND SUCH INFORMATION MAY NOT BE DISCLOSED TO OTHERS FOR ANY PURPOSE OR USED FOR MANUFACTURING PURPOSES WITHOUT WRITTEN PERMISSION FROM AMPHENOL CANADA CORP.

DRAWN		JaneZ		DATE		SEP.22.08		Amphenol High Speed Interconnects			
DESIGNED								A Division of Amphenol Corp. www.amphenol-highspeed.com			
CHECKED		J.SI		DATE		SEP.22.08		TITLE			
								SFP+ 20 POSITION HIGH SPEED CONNECTOR RECEPTACLE FIXED BOARD, RIGHT ANGLE SMT OPTIONAL PLATING AND LUBRICANT ON MATING			
DWG		A		DRAWING NO.		P-UE76-A20-X00XX		REV.		D	
SCALE		4:1		WT.				SURF.		SHEET 3 OF 3	
GENERAL TOLERANCES		INCH		MILLIMETERS		DWG. APPRD.		A.G		SEP.22.08	
DECIMALS		X.XX±0.004		X.X±0.10		ENG. REL. NO.					
ANGLES		X±1°		X.XX±0.05		REF.		X			
		DIMENSIONS ARE IN		CODE ID. NO.		INCHES [mm]		03554			

Mouser Electronics

Authorized Distributor

Click to View Pricing, Inventory, Delivery & Lifecycle Information:

[FCI / Amphenol:](#)

[UE76A203000T](#)