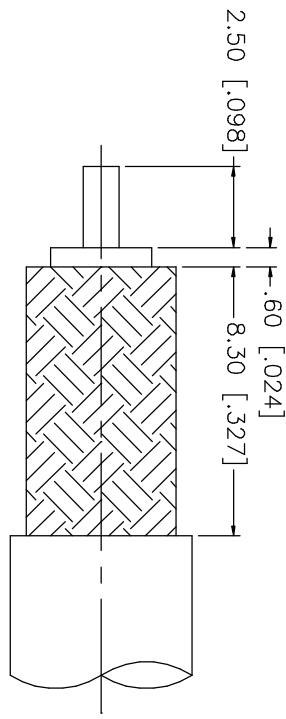
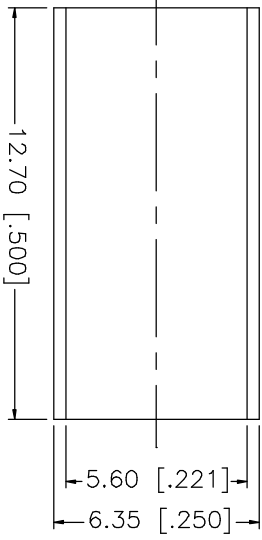
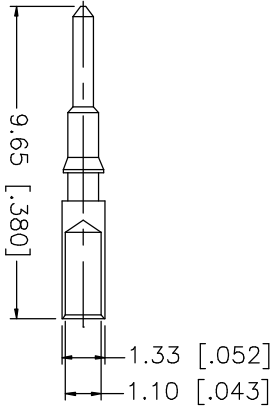
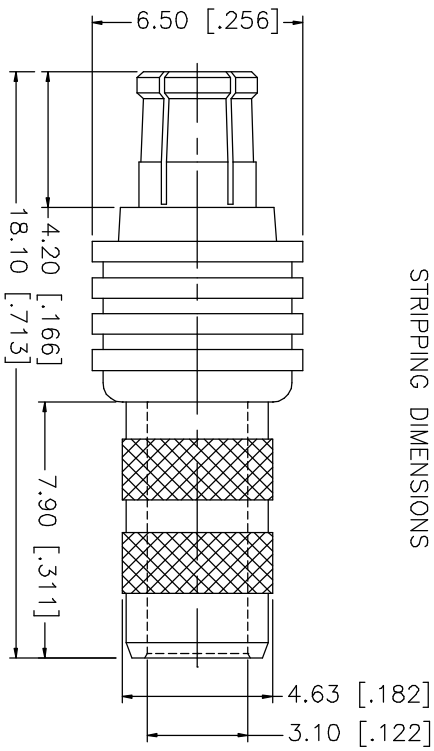


REV.	DATE	DESCRIPTION
NC	11/27/02	INITIAL RELEASE



RECOMMENDED CABLE STRIPPING DIMENSIONS



NOTES:

1. CRIMPED FERRULE  
HEX CRIMP SIZE .213"
2. CRIMPED CONTACT PIN  
SQ. CRIMP SIZE .043"

DESCRIPTION	MATERIAL	FINISH	UNLESS OTHERWISE SPECIFIED DIMENSIONS ARE IN MILLIMETERS	APPROVALS	DATE	TITLE	SCALE	PART NO.	DWG. NO.	REV.
8			DIMENSIONS IN [ ] ARE IN INCHES FOR CUSTOMER REFERENCE ONLY  UNLESS OTHERWISE SPECIFIED TOLERANCES FOR INCHES ARE: .XXX = ± 0.005" .XX = ± 0.010" .X = ± 0.020"  DO NOT SCALE DRAWING	DRAWN	11/27/02	<b>Amphenol - Connex</b> <b>CONNECTOR CORPORATION</b>  MCX CRIMP PLUG (FOR RG-58A/U, 58C/U CABLE)	A	99001	252180.DWG	NC
7				CHECKED						
6				ISSUED						
5										
4	FERRULE	COPPER		GOLD						
3	CONTACT PIN	BRASS		GOLD						
2	INSULATOR	TEFLON		NATURAL						
1	BODY	BER. COPPER		GOLD						
							NA	252180		NC

# Mouser Electronics

Authorized Distributor

Click to View Pricing, Inventory, Delivery & Lifecycle Information:

[Amphenol:](#)

[252180](#)