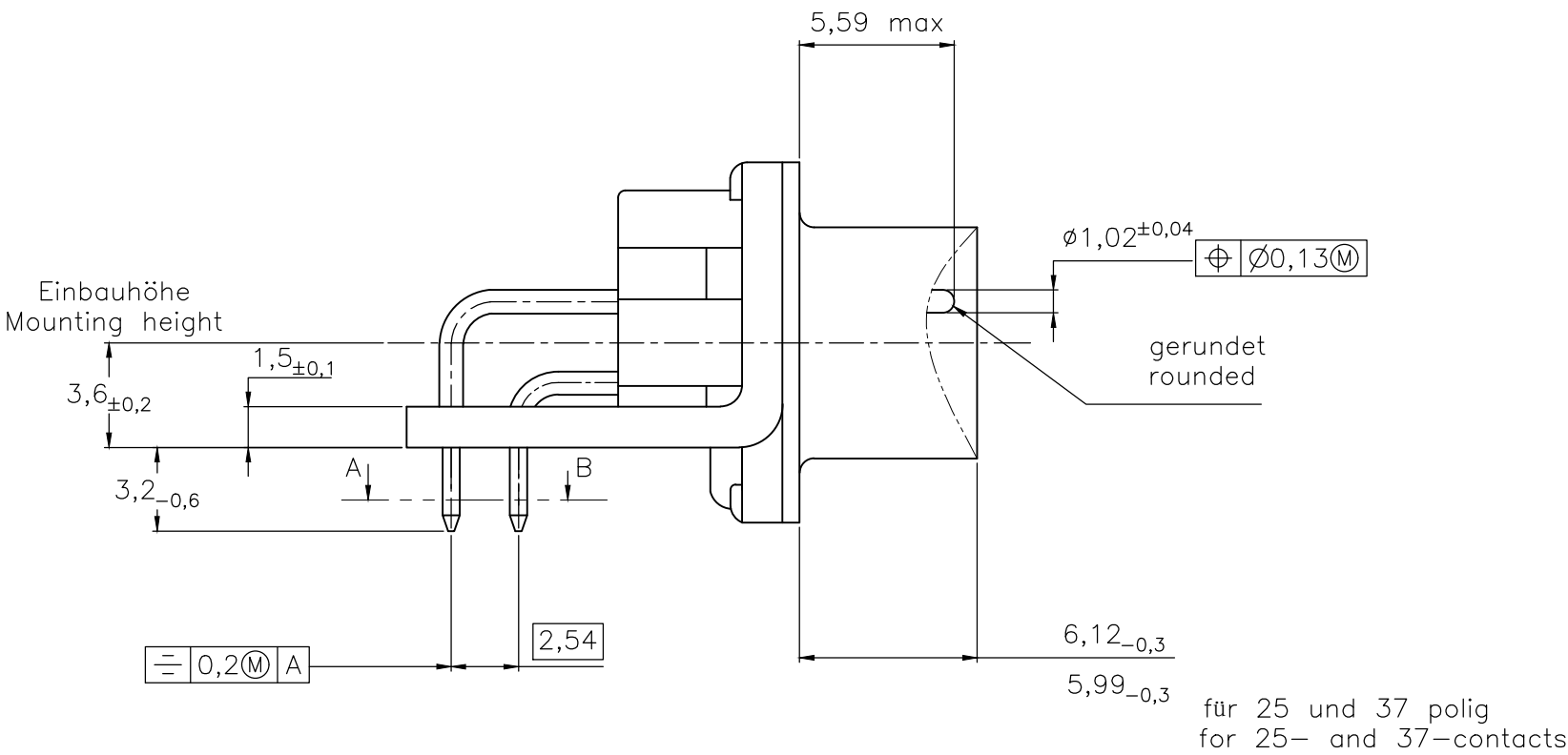
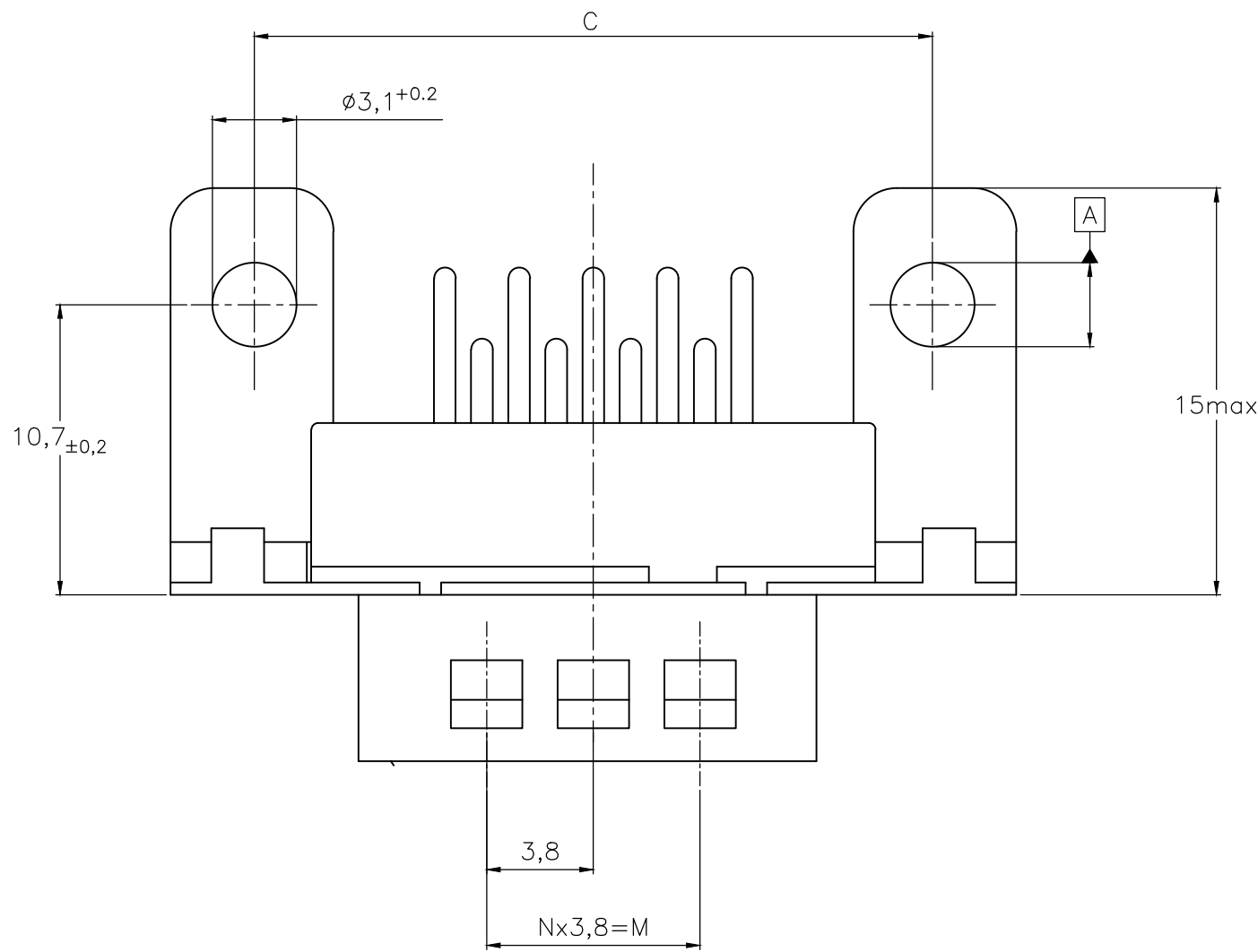
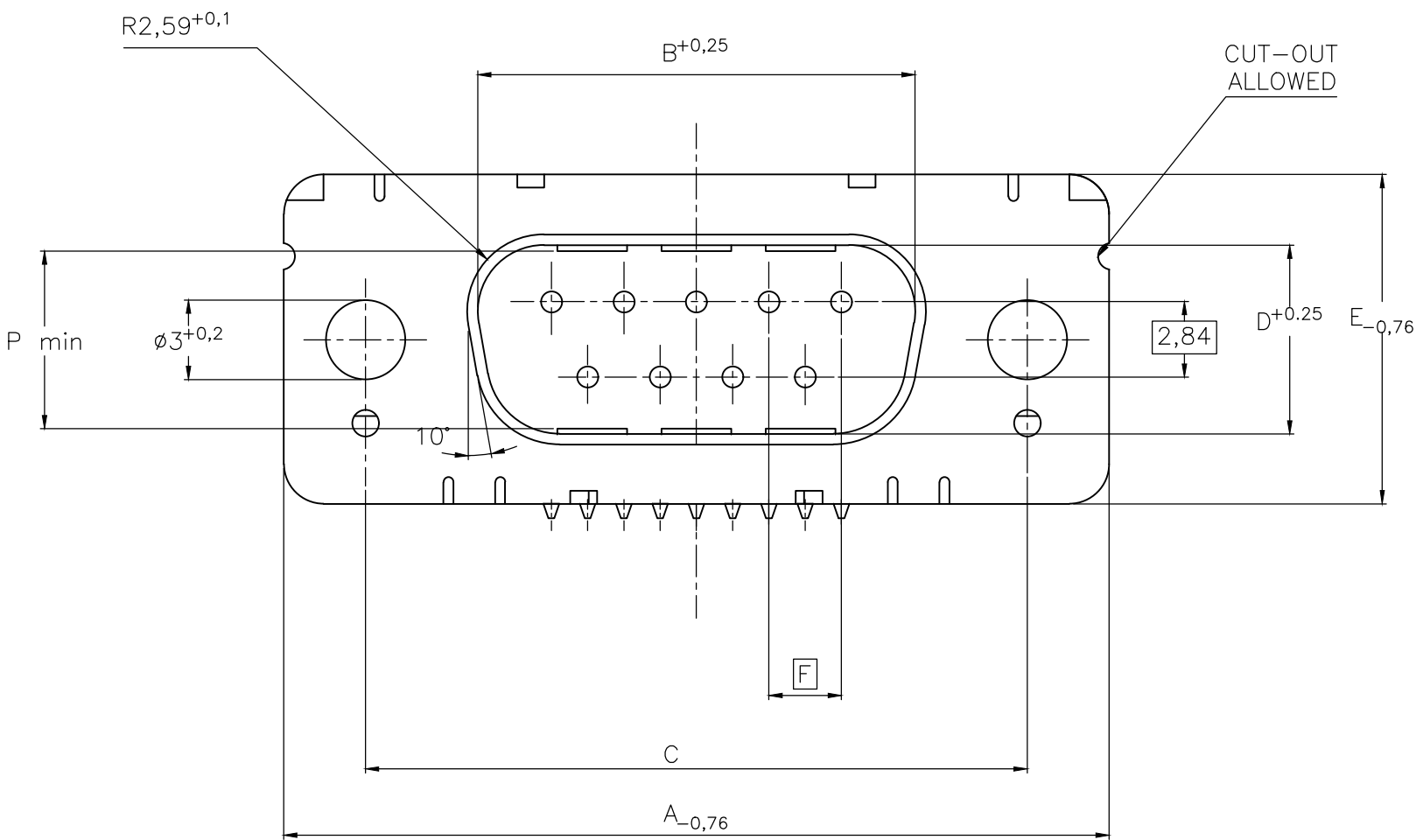
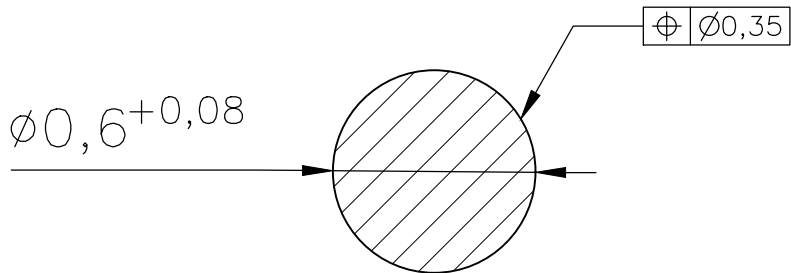


REVISIONS					
P	LTR	DESCRIPTION	DATE	DWN	APVD
	H	REVISED PER ECO-17-017772	25MAY2018	AP	DG

Standardausführung: V23529-Bx121-Cxxx-+  
Standardversion



Schnitt AB des Lötanschlusses  
Cross-section AB of solderpin  
(20:1)



Ordercode Sachnr	Contacts Polzahl	Mass/Dimension									
		A	B	C	D	E	F	M	N	P	
..-Cx09-+	09	31,19	16,79	25,0 <sup>+0,12</sup> <sub>-0,13</sub>	8,23	12,93	2,74	7,6	2	7,72	
..-Cx15-+	15	39,52	25,12	33,3 <sup>+0,15</sup> <sub>-0,1</sub>	8,23	12,93	2,74	15,2	4	7,69	
..-Cx25-+	25	53,42	38,84	47,04 <sup>+0,13</sup> <sub>-0,13</sub>	8,23	12,93	2,76	26,6	7	7,65	
..-Cx37-+	37	69,7	55,30	63,5 <sup>+0,13</sup> <sub>-0,13</sub>	8,23	12,93	2,76	41,8	11	7,65	

Anforderungsstufe/Performance level 1)

OLD PN: V23529-B\*\*\*\*\*-C\*\*\*-\*-7427

1) nach DIN 41652 T.2 und T.4  
according to DIN 41652 T.2 and T.4

THIS DRAWING IS A CONTROLLED DOCUMENT.  
DIMENSIONING AND TOLERANCING PER ASME Y14.5M-2009

DIMENSIONS:  
mm

TOLERANCES UNLESS OTHERWISE SPECIFIED:

0 PLC ± -  
1 PLC ± -  
2 PLC ± -  
3 PLC ± -  
4 PLC ± -  
ANGLES ± -

FINISH  
-

MATERIAL  
-

FINISH  
-

DWN  
GNANI JADAV A E

CHK  
K.MALCZYK

APVD  
K.MALCZYK

PRODUCT SPEC  
-

APPLICATION SPEC  
-

WEIGHT  
0

CUSTOMER DRAWING

07JAN10

NAME  
Sub-D 90° Löt Ausführung Stiftleiste  
Einbauhöhe 3,6 mm  
D-Sub 90° solder version Pin connector  
mounting height 3,6 mm

SIZE  
A2

CAGE CODE  
00779

DRAWING NO  
C=2-1393480-1

RESTRICTED TO  
-

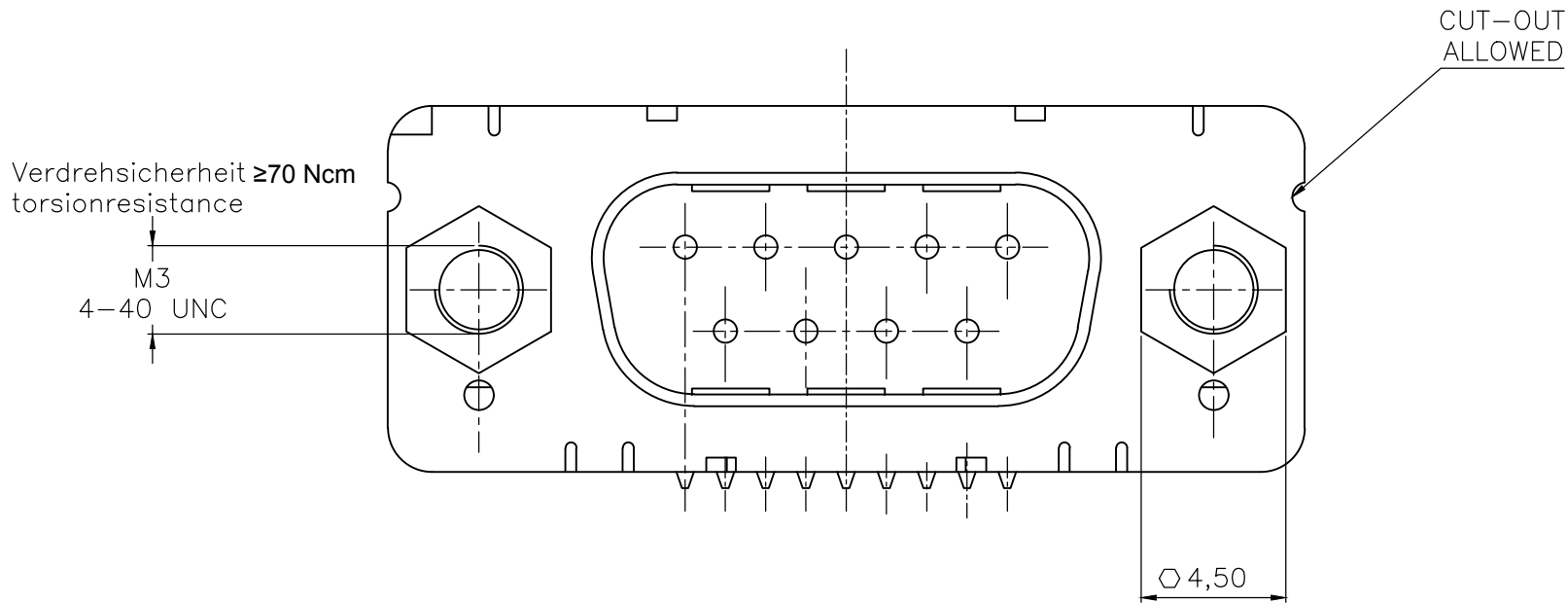
SCALE  
2:1

SHEET  
1 of 6

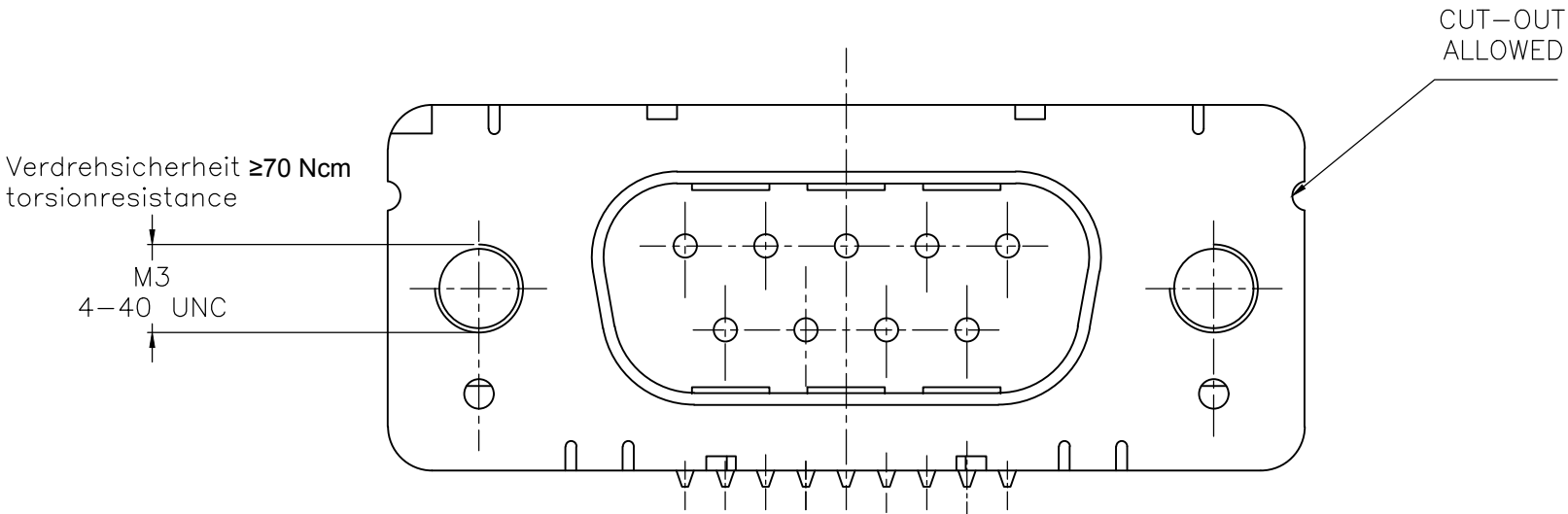
REV  
H

REVISIONS					
P	LTR	DESCRIPTION	DATE	DWN	APVD
	—	SEE SHEET 1	—	—	—

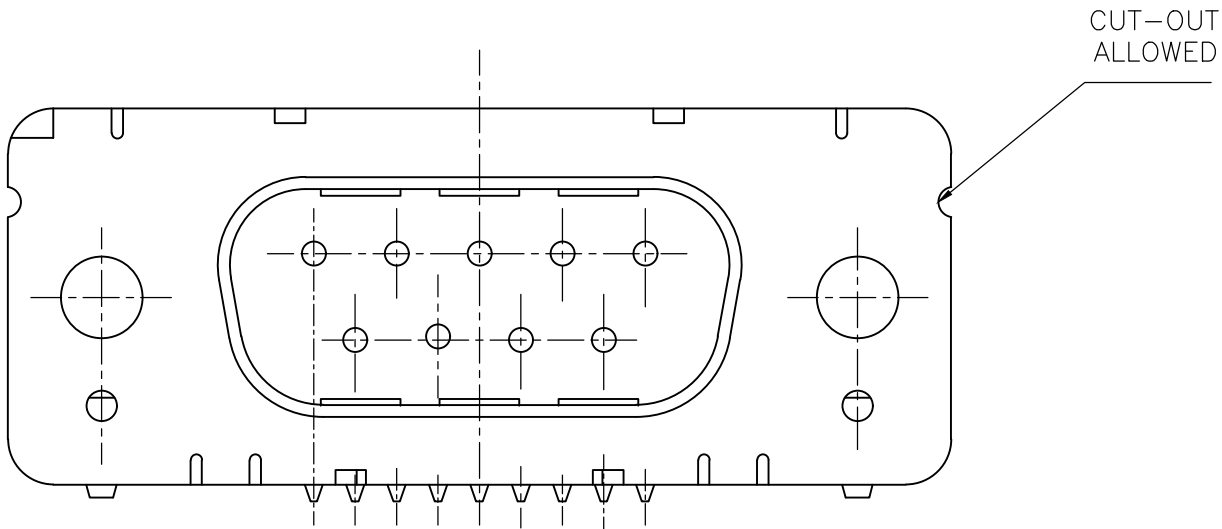
mit Gewindebolzen: M3 V23529-Bxx24-Cxxx-+  
with thread lock 4-40 UNC V23529-Bxx25-Cxxx-+



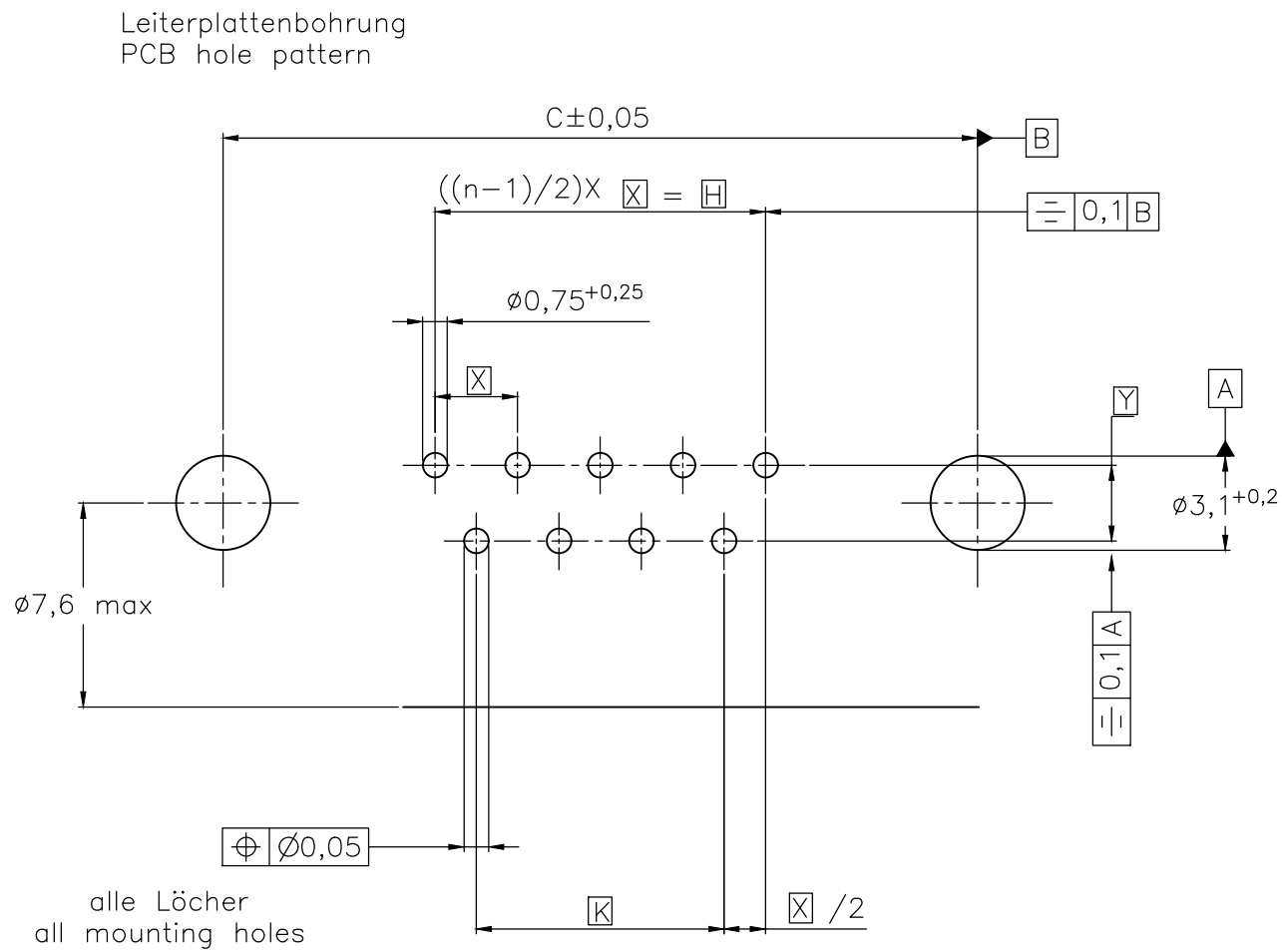
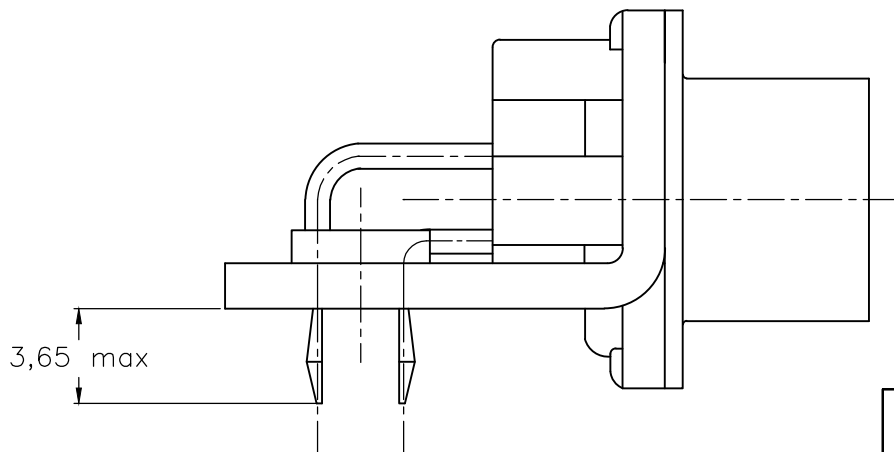
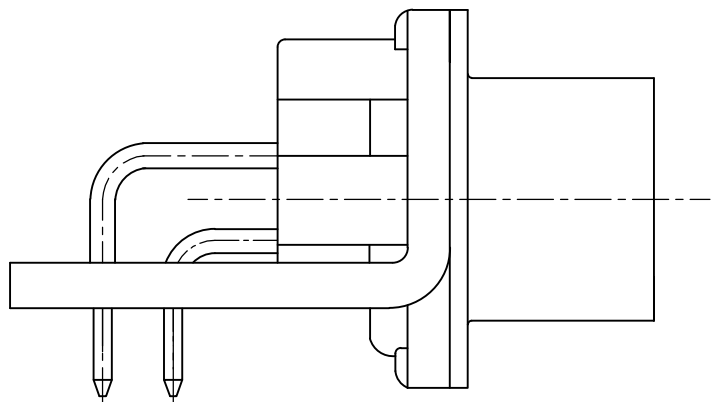
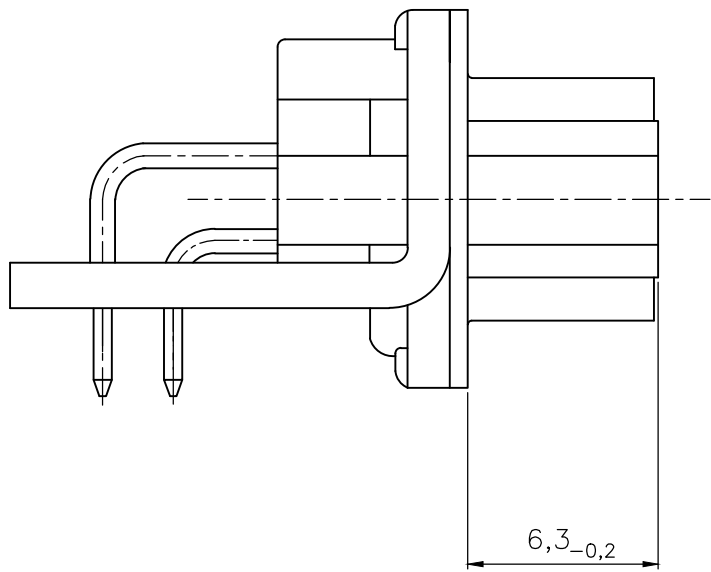
mit Gewinde: M3 V23529-Bxx22-Cxxx-+  
with thread 4-40 UNC V23529-Bxx23-Cxxx-+



mit Clipbefestigung: V23529-Bx22x-Cxxx-+  
with snap-in




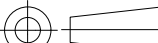
LP-Dicke  $1,6 \pm 0,13$  mm, Loch  $\varnothing 3,1^{+0,2}$   
PC-board-thickness  $1,6 \pm 0,13$  mm, Hole  $\varnothing 3,1^{+0,2}$



Mass Dimension	Polzahl n Number of contacts n			
	9	15	25	37
C	25	33,3	47,04	63,5
H	10,96	19,18	33,12	49,68
K	8,22	16,44	30,36	46,92
X	2,74	2,74	2,76	2,76
Y	2,54			

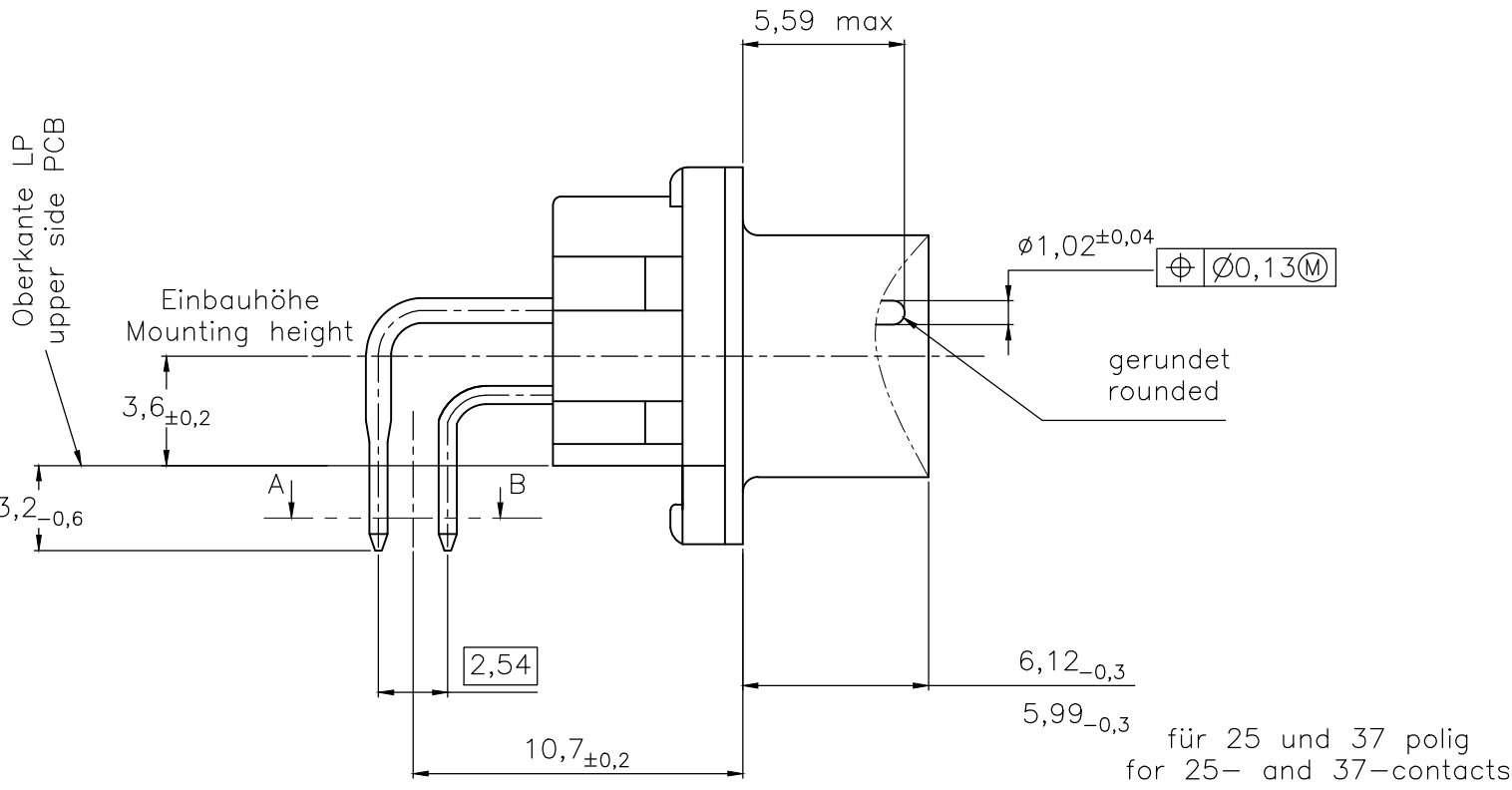
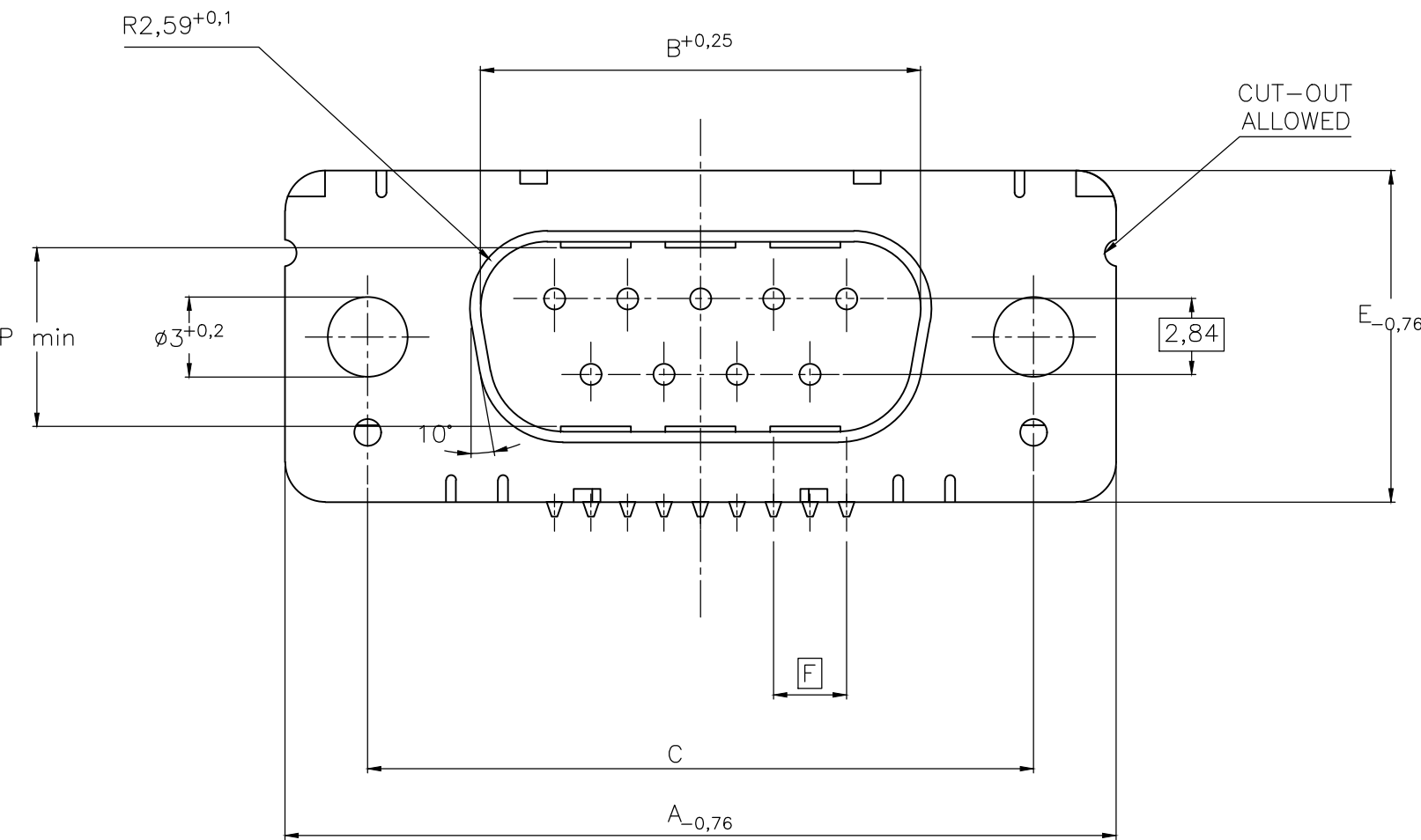
1) nach DIN 41652 T,2 UND T,4  
according to DIN 41652 p,2 AND p,4

OLD PN: V23529-B\*\*\*\*\*-C\*\*\*-\*-7427

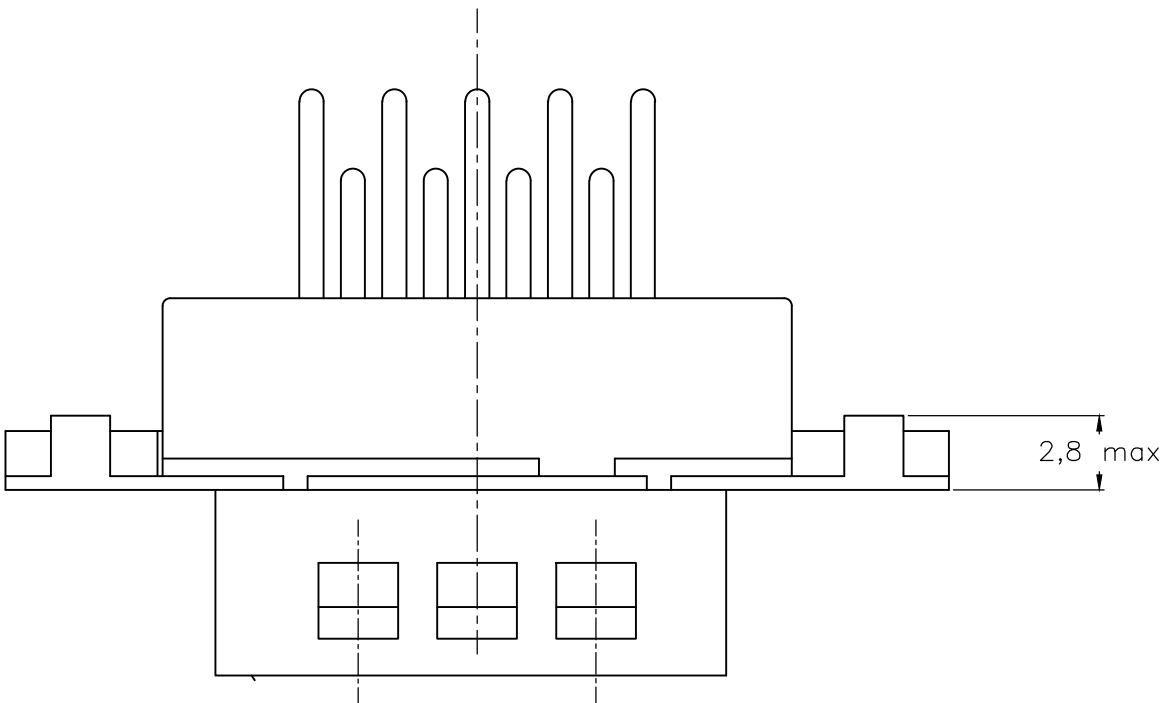
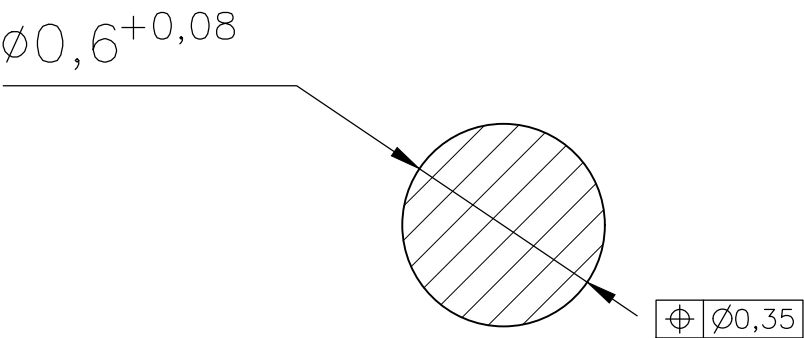
THIS DRAWING IS A CONTROLLED DOCUMENT. DIMENSIONING AND TOLERANCING PER ASME Y14.5M-2009		DWN GNANI JADAV A E 07JAN10	 TE Connectivity				
DIMENSIONS: mm		CHK K.MALCZYK	NAME Sub-D 90° Löt ausführung Stiftleiste Einbauhöhe 3,6 mm D-Sub 90° solder version Pin connector mounting height 3,6 mm				
		APVD K.MALCZYK					
	TOLERANCES UNLESS OTHERWISE SPECIFIED:		PRODUCT SPEC —	SIZE A2			
	0 PLC ± - 1 PLC ± - 2 PLC ± - 3 PLC ± - 4 PLC ± - ANGLES ± -		APPLICATION SPEC —				
MATERIAL —	FINISH —		WEIGHT —	CAGE CODE 00779	DRAWING NO C=2-1393480-1		RESTRICTED TO —
CUSTOMER DRAWING			SCALE 2:1		SHEET 2 of 6		REV H

REVISIONS					
P	LTR	DESCRIPTION	DATE	DWN	APVD
-	-	SEE SHEET 1	-	-	-

Standardausführung ohne Winkel: V23529-B50x1-Cxxx-+  
Standardversion without bracket



Schnitt AB des Lötanschlusses  
Cross-section AB of solderpin  
(20:1)



Ordercode Sachnr	Contacts Polzahl	Mass/Dimension								
		A	B	C	D	E	F	M	N	P
..-Cx09-+	09	31,19	16,79	25,0 $\begin{smallmatrix} +0,12 \\ -0,13 \end{smallmatrix}$	8,23	12,93	2,74	7,6	2	7,72
..-Cx15-+	15	39,52	25,12	33,3 $\begin{smallmatrix} +0,15 \\ -0,1 \end{smallmatrix}$	8,23	12,93	2,74	15,2	4	7,69
..-Cx25-+	25	53,42	38,84	47,04 $\begin{smallmatrix} +0,13 \\ -0,13 \end{smallmatrix}$	8,23	12,93	2,76	26,6	7	7,65
..-Cx37-+	37	69,7	55,30	63,5 $\begin{smallmatrix} +0,13 \\ -0,13 \end{smallmatrix}$	8,23	12,93	2,76	41,8	11	7,65

Anforderungsstufe/Performance level 1)  
OLD PN: V23529-B\*\*\*\*-C\*\*\*-\*-7427

1) nach DIN 41652 T.2 und T.4  
according to DIN 41652 T.2 and T.4

THIS DRAWING IS A CONTROLLED DOCUMENT.  
DIMENSIONING AND TOLERANCING PER ASME Y14.5M-2009

DIMENSIONS:  
mm

TOLERANCES UNLESS OTHERWISE SPECIFIED:

0 PLC ± -  
1 PLC ± -  
2 PLC ± -  
3 PLC ± -  
4 PLC ± -  
ANGLES ± -  
FINISH -

MATERIAL -

DWN 07JAN10  
GNANI JADAV A E

CHK -  
K.MALCZYK

APVD -  
K.MALCZYK

PRODUCT SPEC -

APPLICATION SPEC -

WEIGHT -

CUSTOMER DRAWING

TE Connectivity

NAME Sub-D 90° Löt Ausführung Stiftleiste  
Einbauhöhe 3,6 mm  
D-Sub 90°solder version Pin connector  
mounting height 3,6 mm

SIZE A2  
CAGE CODE 00779  
DRAWING NO C=2-1393480-1  
RESTRICTED TO -

SCALE 2:1  
SHEET 3 of 6  
REV H

REVISIONS					
P	LTR	DESCRIPTION	DATE	DWN	APVD
-	-	SEE SHEET 1	-	-	-

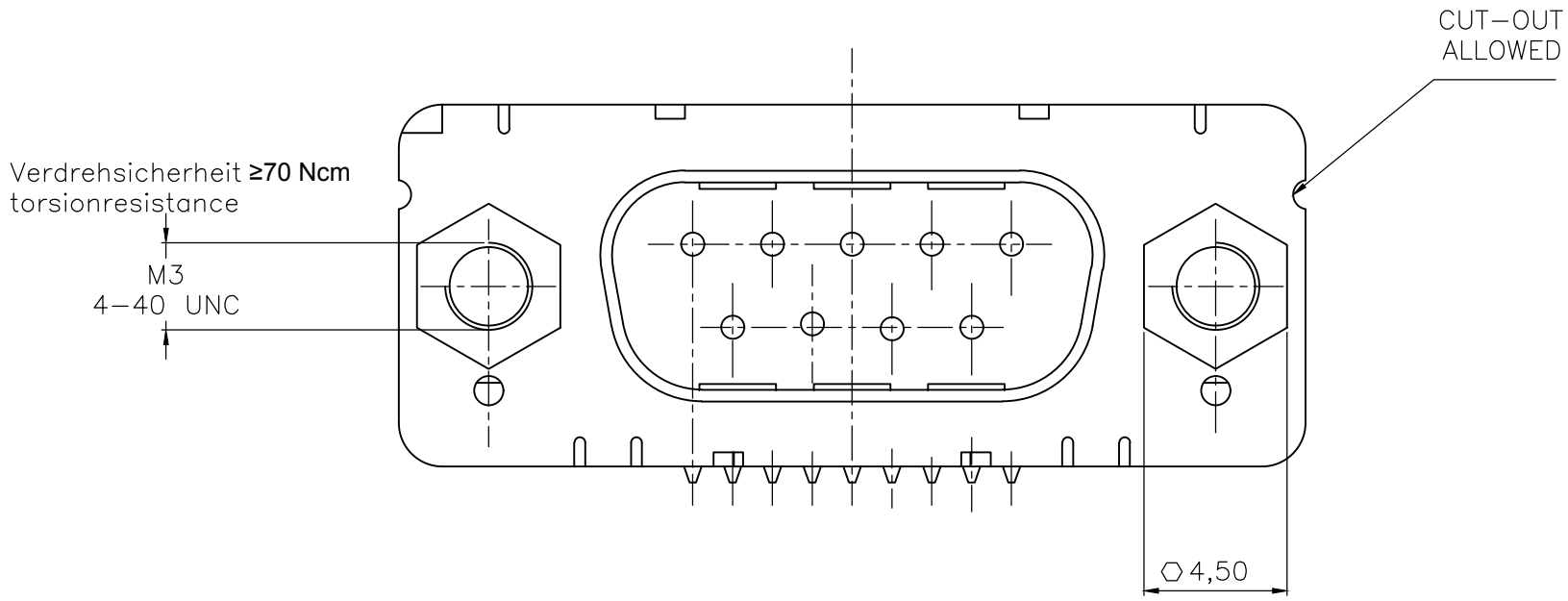
D

C

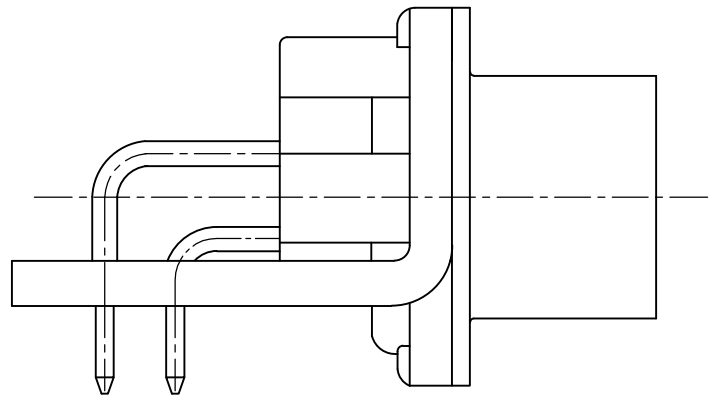
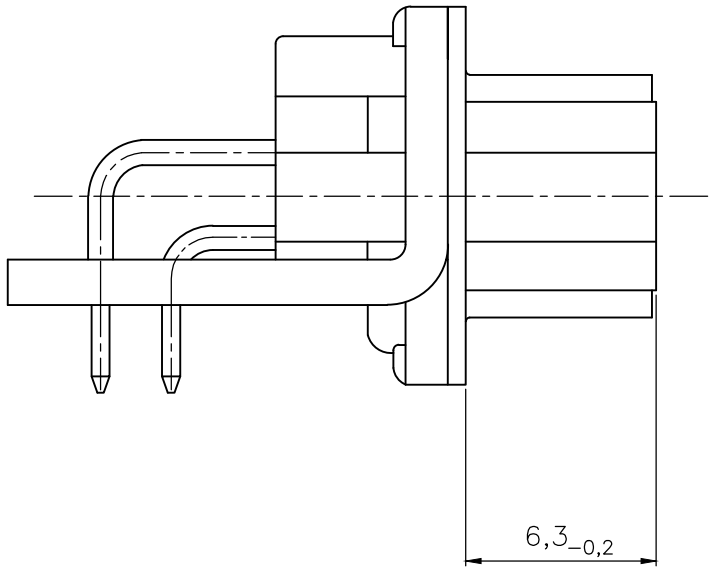
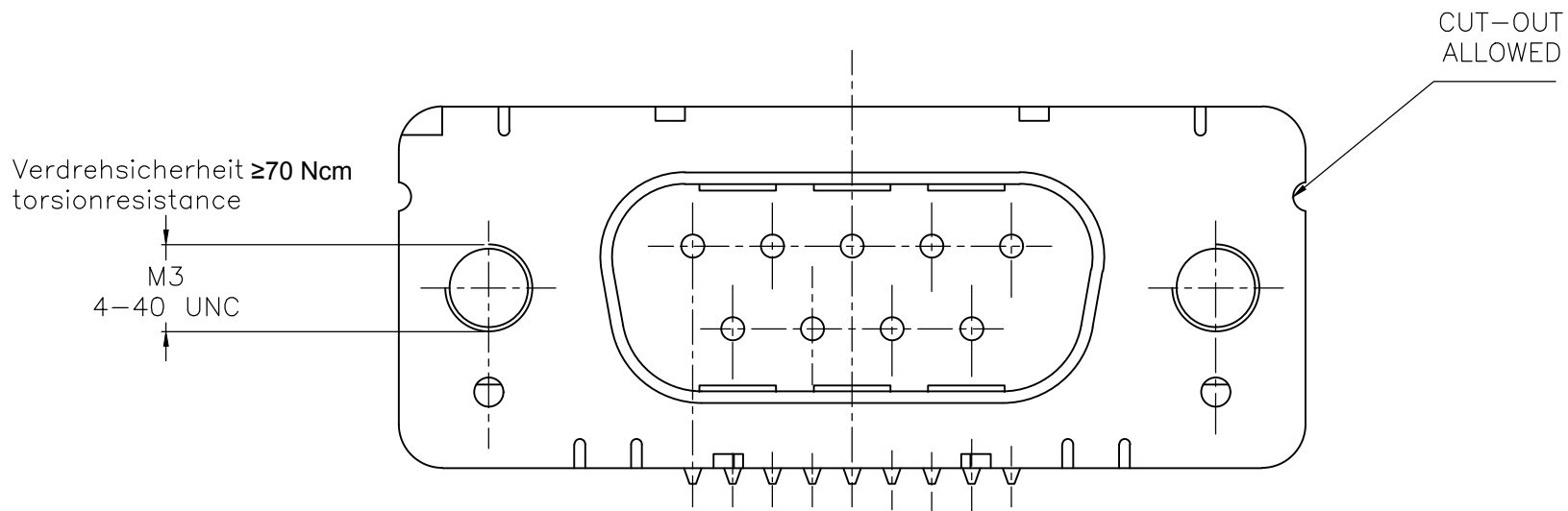
B

A

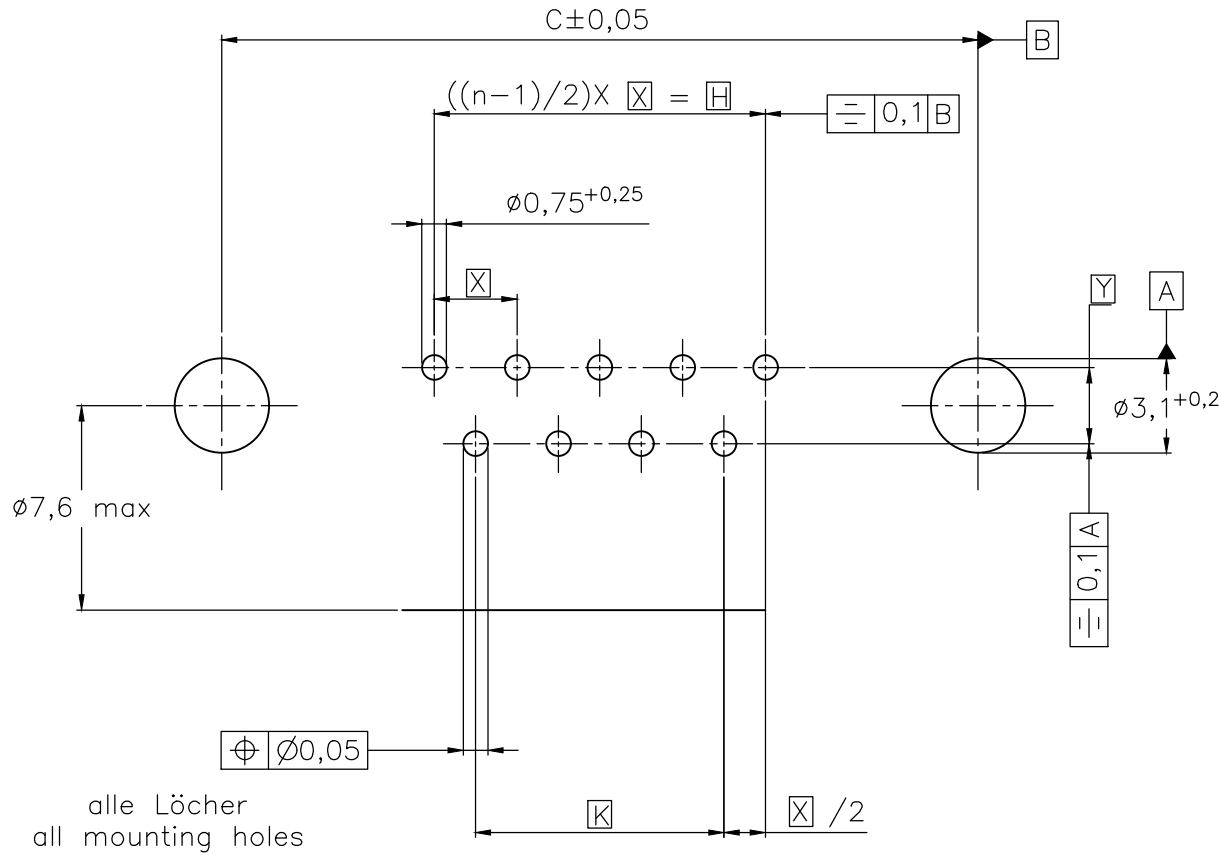
mit Gewindebolzen: M3 V23529-B50x4-Cxxx-+  
with thread lock 4-40 UNC V23529-B50x5-Cxxx-+



mit Gewinde: M3 V23529-B50x2-Cxxx-+  
with thread 4-40 UNC V23529-B50x3-Cxxx-+



Leiterplattenbohrung  
PCB hole pattern



Mass Dimension	Polzahl n Number of contacts n			
	9	15	25	37
C	25	33,3	47,04	63,5
H	10,96	19,18	33,12	49,68
K	8,22	16,44	30,36	46,92
X	2,74	2,74	2,76	2,76
Y	2,54			

1) nach DIN 41652 T,2 UND T,4  
according to DIN 41652 p,2 AND p,4

OLD PN: V23529-B\*\*\*\*-C\*\*\*-\* -7427

THIS DRAWING IS A CONTROLLED DOCUMENT.  
DIMENSIONING AND TOLERANCING PER ASME Y14.5M-2009

DIMENSIONS:  
mm

TOLERANCES UNLESS OTHERWISE SPECIFIED:

0 PLC ± -  
1 PLC ± -  
2 PLC ± -  
3 PLC ± -  
4 PLC ± -  
ANGLES ± -  
FINISH -

MATERIAL -

FINISH -

DWN 07JAN10  
GNANI JADAV A E

CHK -  
K.MALCZYK

APVD -  
K.MALCZYK

PRODUCT SPEC -

APPLICATION SPEC -

WEIGHT -

CUSTOMER DRAWING

TE Connectivity

NAME  
Sub-D 90° Lötanschluss Stifteleiste  
Einbauhöhe 3,6 mm  
D-Sub 90°solder version Pinconnector  
mounting height 3,6 mm

SIZE A2  
CAGE CODE 00779  
DRAWING NO. C=2-1393480-1  
RESTRICTED TO -

SCALE 2:1  
SHEET 4 of 6  
REV H

D

C

B

A

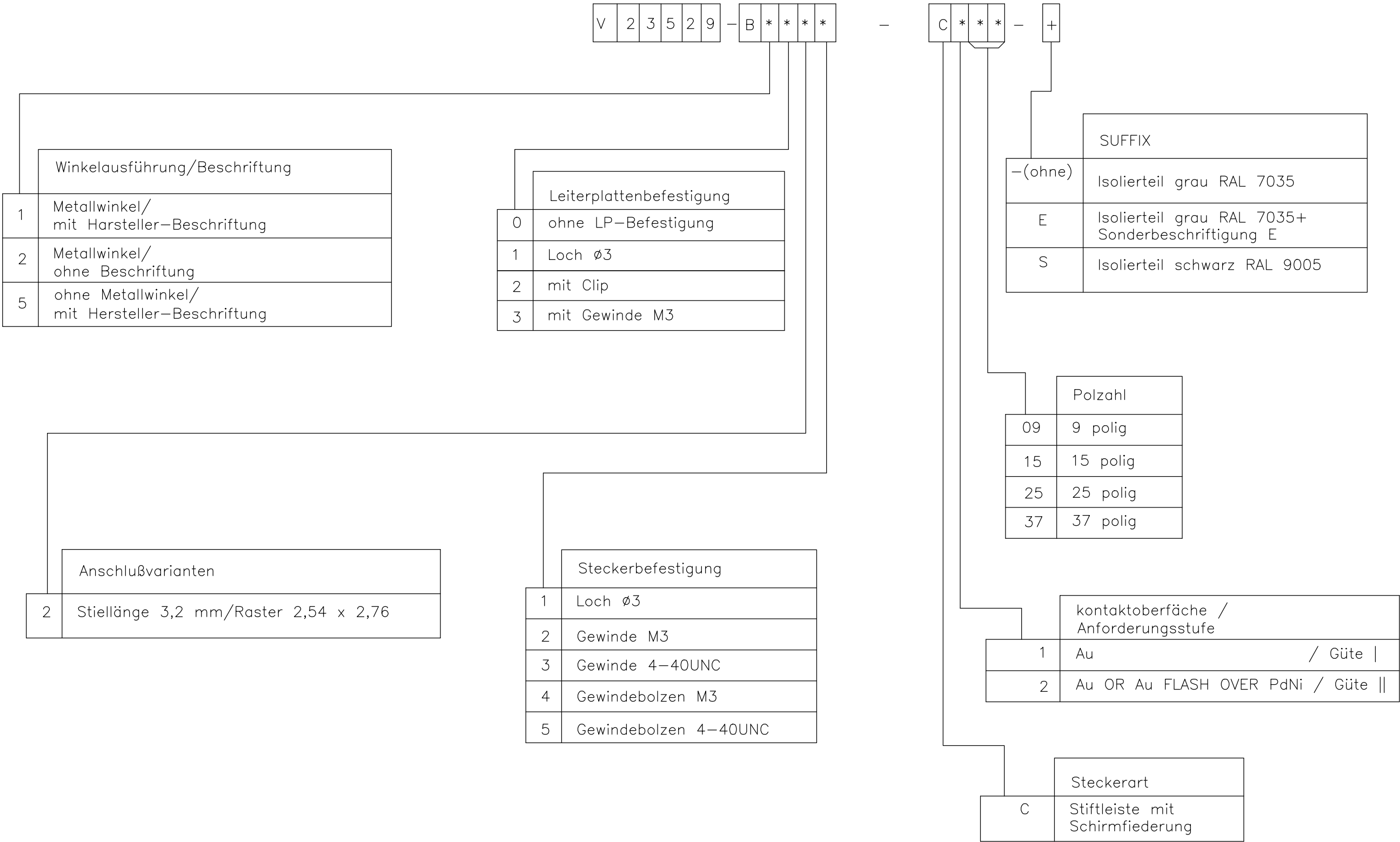
D

C

B

A

1) nach DIN 41652 T.2 und T.4  
according to DIN 41652 p.2 and p.4



REVISIONS					
P	LTR	DESCRIPTION	DATE	DWN	APVD
	-	SEE SHEET 1	-	-	-

D

D

C

C

B

B

A

A

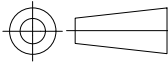
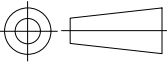
Active part numbers. Contact TE CONNECTIVITY for other configuration availability

Old Part Number	TE CONNECTIVITY Part Number	
V23529-B1121-C209	2-1393480-1	
V23529-B1121-C215	2-1393480-2	
V23529-B1121-C225	2-1393480-3	
V23529-B1121-C237	2-1393480-4	
V23529-B1122-C209	3-1393480-2	
V23529-B1122-C215	3-1393480-3	
V23529-B1122-C225	2-1392010-8	
V23529-B1122-C237	3-1392010-6	
V23529-B1123-C209	4-1393480-0	
V23529-B1123-C215	4-1393480-1	
V23529-B1123-C225	4-1393480-2	
V23529-B1123-C237	4-1393480-3	
V23529-B1125-C125	5-1393480-1	OBSOLETE
V23529-B1125-C209	5-1393480-2	OBSOLETE
V23529-B1125-C215	5-1393480-3	OBSOLETE
V23529-B1125-C225	5-1393480-4	OBSOLETE
V23529-B1125-C237	3-1392010-5	OBSOLETE
V23529-B1221-C109	5-1393480-8	
V23529-B1221-C209	5-1393480-9	

Old Part Number	TE CONNECTIVITY Part Number		
V23529-B1221-C215	6-1393480-0		
V23529-B1222-C209	7-1393480-4	OBSOLETE	
V23529-B1222-C215	7-1393480-5	OBSOLETE	
V23529-B1222-C225	7-1393480-6	OBSOLETE	
V23529-B1222-C237	7-1393480-7	OBSOLETE	
V23529-B1223-C209	8-1393480-5		
V23529-B1223-C215	8-1393480-6		
V23529-B1223-C225	8-1393480-7		
V23529-B1223-C237	8-1393480-8		
V23529-B1224-C209	9-1393480-4		
V23529-B1224-C215	9-1393480-5		
V23529-B1224-C225	9-1393480-6		
V23529-B1225-C109	1393481-4		
V23529-B1225-C209	1393481-5		
V23529-B1225-C215	3-1392010-3		
V23529-B1225-C225	1393481-6	2173194-1	OBSOLETE
V23529-B1225-C237	3-1392010-4		
V23529-B2121-C209	1-1393481-0		
V23529-B2221-C209	1-1393481-2		

1) nach DIN 41652 T.2 und T.4  
according to DIN 41652 p.2 and p.4

OLD PN: V23529-B\*\*\*\*-C\*\*\*\*-\*-7427

THIS DRAWING IS A CONTROLLED DOCUMENT. DIMENSIONING AND TOLERANCING PER ASME Y14.5M-2009		DWN 07JAN10 GNANI JADAV A E		 TE Connectivity			
DIMENSIONS: mm		TOLERANCES UNLESS OTHERWISE SPECIFIED: 0 PLC ± - 1 PLC ± - 2 PLC ± - 3 PLC ± - 4 PLC ± - ANGLES ± -		CHK K.MALCZYK		NAME	
				APVD K.MALCZYK		Sub-D 90° Lötanschluss Stiftheile Einbauhöhe 3,6 mm D-Sub 90° solder version Pin connector mounting height 3,6 mm	
MATERIAL -		FINISH -		PRODUCT SPEC -		RESTRICTED TO -	
				APPLICATION SPEC -			
				WEIGHT -		SIZE CAGE CODE DRAWING NO	
				CUSTOMER DRAWING		A2 00779 C=2-1393480-1	
				SCALE 2:1		SHEET 6 of 6 REV H	

2-1393480-1

# Mouser Electronics

Authorized Distributor

Click to View Pricing, Inventory, Delivery & Lifecycle Information:

[TE Connectivity:](#)

[8-1393480-7](#)