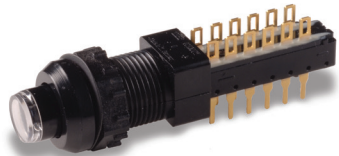


# F Series Pushbutton Switches



A Pushbutton



### Features/Benefits

- Up to 10 poles per module
- Various contact terminals
- Various mounting & switch ganging configurations
- Mechanical indicator buttons
- RoHS compliant

### Typical Applications

- Audio selection
- Digital equipment interface
- Medical equipment interface

### Specifications

SWITCHING POWER: F module max. AC/DC: Silver: 50 VA/15W, Gold: 1 VA/300 mW.  
 SWITCHING VOLTAGE: F module max. AC/DC: Silver: 125/30V, Gold: 50/30 V.  
 SWITCHING CURRENT: F module max. AC/DC: Silver: 0.5A/0.5A, Gold: 0.04A/0.01A.  
 CARRYING CURRENT: Max at d87u = 20C: Silver: < 2A, Gold: <0.5A.  
 DIELECTRIC STRENGTH (50 Hz, 1 min.): Chassis/contact: ^1500V Between contacts: ^1500V.  
 OPERATING LIFE "OA/EE" (24V/200mA): >10<sup>5</sup> operations "GR": >3.5 x 10<sup>4</sup> operations.  
 CONTACT RESISTANCE: Initial: Typical %10 mΩ, max. 20 mΩ After operating life: %100 mΩ  
 INSULATION RESISTANCE: ^10<sup>9</sup> Ω between open contacts, ^10<sup>9</sup> Ω between chassis and contacts.  
 CAPACITANCE (at f = 10 kHz): %0.7 pF between 2 contacts.  
 TOTAL TRAVEL/LATCHING TRAVEL: 4.7mm/3.3mm (.185 inch/.130 inch).  
 All models and options are RoHS compliant and compatible.

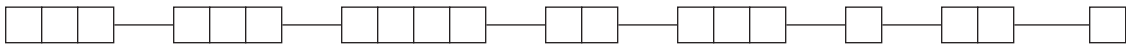
**NOTE:** All models and options are RoHS compliant and compatible.  
**NOTE:** Specifications and materials listed above are for switches with standard options. For information on specific and custom switches, consult Customer Service Center.

TYPICAL F OPERATING FORCE: 2U: 6.5N (650 grams); 4U: 6.5N (650 grams); 6U: 7.5N (750 grams); 8U: 9.0N (900 grams); 10U: 9.0N (900 grams).  
 EUROPEAN TYPICAL SF OPERATING FORCE: 2U: 3.5N±0.5N (350 grams±100 grams); 4U: 5N±1N (500 grams±100 grams); 6U: 6.5N±1N (650 grams±100 grams); 8U: 9.0N±1N (900 grams±100 grams).  
 OPERATING TEMPERATURE RANGE: -40°C to 70°C.  
**Materials**  
 HOUSING: Polycarbonate UL 94V-0 or polyester UL 94V-0.  
 ACTUATOR: Polyester UL 94V-0.  
 MOVABLE CONTACTS: Bimetal brass, silver plated, gold plate over nickel.  
 STATIONARY CONTACTS & TERMINALS: Brass, silver plated, gold plated.  
 TERMINAL BOARD: Polyester UL 94V-0.  
 RETURN SPRING: Music wire.  
 TERMINAL SEAL: RTV adhesive sealant.  
 CHASSIS: Steel.  
 LOCKOUT PIN: Steel.  
 BLOCKERS: Steel.

### Build-A-Switch

To order, simply select desired option from each category and place in the appropriate box. Available options are shown and described on pages A-88 thru A-95. For additional options not shown in catalog, consult Customer Service Center. If requesting only a switch, select either a North American or European switch as noted below. Chassis and buttons are sold separately. If multiple stations are selected, we will assume all switches are the same unless noted otherwise.

### North American Order Code - Switch Only



<p><b>Designation</b> <input type="checkbox"/></p> <p><b>F</b> F Series  <b>FLT</b> Light touch F series  <b>ZF</b> Central mounted F series</p> <p><b>Contact Arrangement</b> <input type="checkbox"/></p> <p><b>2U</b> 2PDT  <b>4U</b> 4PDT  <b>6U</b> 6PDT  <b>8U</b> 8PDT  <b>10U</b> 10PDT</p> <p><b>Mechanical Function</b> <input type="checkbox"/></p> <p><b>OA</b> Momentary  <b>EE</b> Alternate (push-push)  <b>GR</b> Interlock  <b>AOR</b> Central release  <b>OASP</b> Momentary with lockout  <b>GRSP</b> Interlock with lockout</p>	<p><b>Terminal Sealing</b> <input type="checkbox"/></p> <p><b>(NONE)</b> None  <b>TB</b> Top/bottom</p> <p><b>Terminal Style</b> <input type="checkbox"/></p> <p><b>(NONE)</b> Solder lugs &amp; PC pins  <b>01A</b> Cut solder lugs  <b>01B</b> Cut PC pins, for other configurations, consult factory</p> <p><b>Electrical Function</b> <input type="checkbox"/></p> <p><b>(NONE)</b> BBM Break-Before-Make  <b>M</b> MBB (special) Make-Before-Break</p>	<p><b>Contact Material</b> <input type="checkbox"/></p> <p><b>(NONE)</b> Silver, AG  <b>AU</b> Gold</p> <p><b>Dress nut*</b> <input type="checkbox"/></p> <p>*Central mounted F series only</p> <p><b>(NONE)</b> No dress nut  <b>B</b> Black  <b>C</b> Chrome</p>
---	---	--



Dimensions are shown: Inches (mm)  
 Specifications and dimensions subject to change

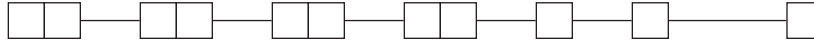


# F Series Pushbutton Switches

Pushbutton

A

## European Order Code - Switch Only



### Designation

- SF** F Series
- ZF** Central mounted F series

### Contact Arrangement

- 2U** 2PDT
- 4U** 4PDT
- 6U** 6PDT
- 8U** 8PDT

### Mechanical Function

- OA** Momentary
- EE** Alternate (push-push)
- GR** Interlock

### Terminal Style

- (NONE)** Solder lugs & PC pins

- LB** Cut solder lugs
- PB** Cut PC pins, for other configurations, consult factory

### Electrical Function

- (NONE)** BBM

### Contact Material

- (NONE)** Silver, AG
- P** Gold

### Dress nut\*

\*Central mounted F series only

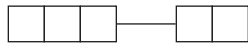
- (NONE)** No dress nut

- B** Black
- C** Chrome

\*Minimum order quantities apply.

## Order Code - Buttons

### Solid Buttons



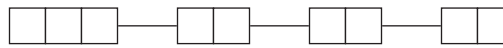
### Style

- F01** FMR
- F02** FG\*
- F12** FSC
- F13** FSD
- F14** FU12
- F15** FSB
- F16** FE
- F19** FA
- F21** F001

### Button Color

- 01** Black
- 02** White
- 03** Red
- 04** Light gray

### Mechanical Indicator Buttons



### Style

- F01** FA100
- F02** FA101
- F07** FA120
- F08** FA201
- F11** FA200\*

### Shell Color

- 01** Black

### Out Position Color

- 01** Black

### In Position Color

- 02** White
- 06** Yellow
- 07** Blue
- 08** Green
- 12** Orange

\*Button options for central mounting configurations, use 'FG' for central mount with chrome dress nut, use 'FA200' for central mount with black dress nut.

## BUTTON REMOVAL

A button of a push-push switch should only be removed in the "OFF" non-latching position.

## Order Code - Chassis

To order a switch with chassis, create the switch part number listed above and add the Chassis part number configurator information at the end of the part number.

Note: We do not guarantee or recommend interlocking beyond 10 stations.



### No. of Stations

- 01 thru 23** Comes with standard .094 (2,4mm) mounting holes
- Note: Single station chassis available with special mounting configurations, consult factory.

### Spacing between Stations

- 00** Single station
- 10** 10mm
- 12.5** 12.5mm
- 15** 15mm
- 17.5** 17.5mm
- 20** 20mm

### Special Acknowledgements

See note

\*Minimum order quantities apply.



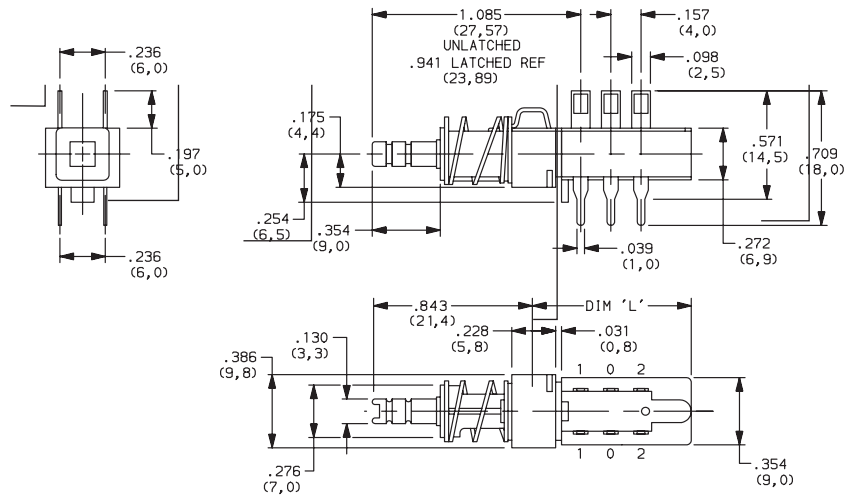
Dimensions are shown: Inches (mm)  
Specifications and dimensions subject to change



### SWITCHES WITH STANDARD OPTIONS

#### F2UEE

CONTACT ARRANGEMENT	LENGTH DIM 'L'
2U	0.827 (21,00)
4U	1.300 (33,00)
6U	1.770 (45,00)
8U	2.240 (57,00)
10U	2.720 (69,00)



#### ZF2UEEBF11010108

CONTACT ARRANGEMENT	LENGTH DIM 'L'
2U	0.827 (21,00)
4U	1.300 (33,00)
6U	1.770 (45,00)
8U	2.240 (57,00)
10U	2.720 (69,00)



### DESIGNATION



#### Designation, North America

- F** F Series
- FLT** Light touch F series
- ZF** Central mounted F series

#### Designation, Europe

- SF** F Series
- ZF** Central mounted F series

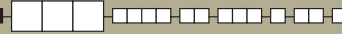


Third Angle Projection  
Dimensions are shown: Inches (mm)  
Specifications and dimensions subject to change



# F Series Pushbutton Switches

## CONTACT ARRANGEMENT



OPTION CODE	NO. OF POLES	SCHEMATIC
<b>2U</b>	2PDT	
<b>4U</b>	4PDT	2X
<b>6U</b>	6PDT	3X
<b>8U</b>	8PDT	4X
<b>10U</b>	10PDT	5X

## PC MOUNTING



## MECHANICAL FUNCTION



### North America

OPTION CODE	FUNCTION
<b>OA</b>	Momentary
<b>EE</b>	Alternate (push-push)
<b>GR</b>	Interlock
<b>AOR</b>	Central release
<b>OASP</b>	Momentary with lockout
<b>GRSP</b>	Interlock with lockout

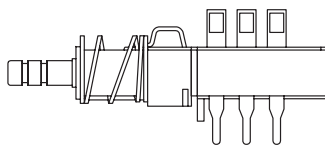
### Europe

OPTION CODE	FUNCTION
<b>OA</b>	Momentary
<b>EE</b>	Alternate (push-push)
<b>GR</b>	Interlock

## TERMINAL SEALING

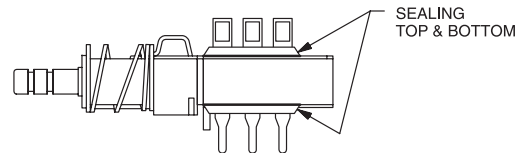


**(NONE)** NO SEAL



F2UEE shown in example above.

**TB** TOP & BOTTOM



**NOTE:** Available for North America only



Third Angle Projection

Dimensions are shown: Inches (mm)  
Specifications and dimensions subject to change



### TERMINAL STYLE



**(NONE)** SOLDER LUGS & PC PINS



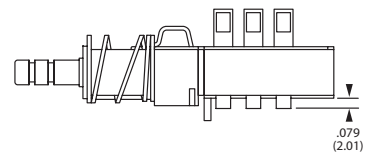
**01A** CUT SOLDER LUGS (North America)

**LB** CUT SOLDER LUGS (Europe)



**01B** CUT PC PINS (North America)

**PB** CUT PC PINS (Europe)



### ELECTRICAL FUNCTION



OPTION CODE	FUNCTION
<b>(NONE)</b>	BBM Non-shorting
<b>M</b>	MBB Shorting (North America only)

### CONTACT MATERIAL



NORTH AMERICA OPTION CODE	EUROPE OPTION CODE	RoHS COMPLIANT *	RoHS COMPATIBLE *	MATERIAL	RATING
<b>(NONE)</b>	<b>(NONE)</b>	YES	YES	SILVER, AG	50 VA/15 W; 125/30 V; 0.5/0.5 A
<b>AU</b>	<b>P</b>	YES	YES	GOLD	1 VA/300mW; 50/30 V; 0.04 A/0.01 A

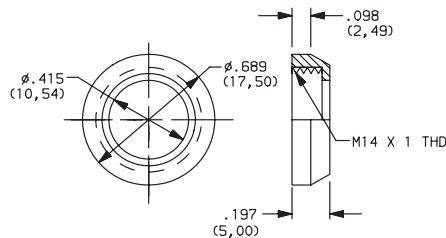
\* Note: See Technical Data section of this catalog for RoHS compliant and compatible definitions and specifications.

### DRESS NUT

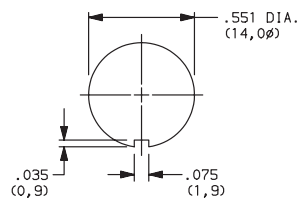


**(NONE)** NO DRESS NUT FOR F & F/LT DESIGNATIONS

**B** BLACK



#### PANEL CUTOUT

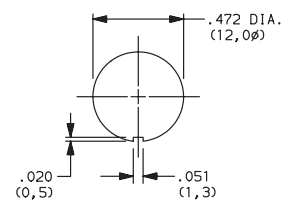


NOTE: Available with ZF designation and FA200 buttons.

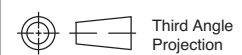
**C** CHROME



#### PANEL CUTOUT



NOTE: Available with ZF designation and FG button.



Dimensions are shown: Inches (mm)  
Specifications and dimensions subject to change

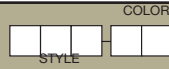


# F Series Pushbutton Switches

Pushbutton

A

## SOLID BUTTON

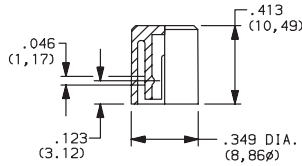


### STYLE

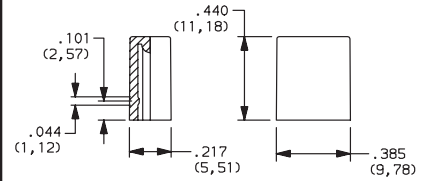
**F01** FMR



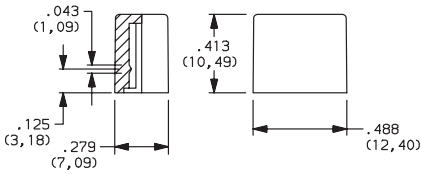
**F02** FG



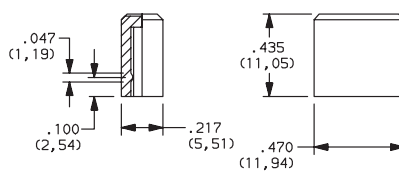
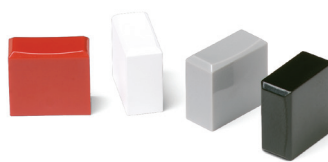
**F12** FSC



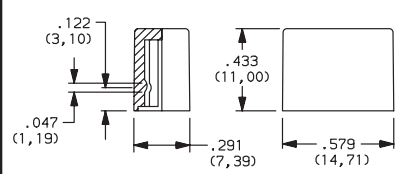
**F13** FSD



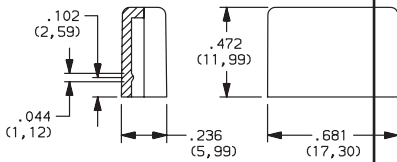
**F14** FU12



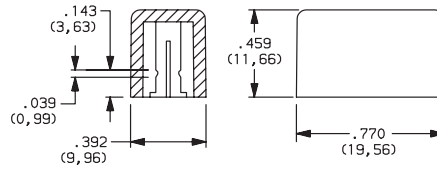
**F15** FSB



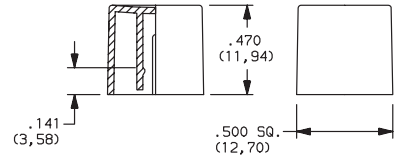
**F16** FE



**F19** FA



**F21** F001



OPTION CODE	COLOR
<b>01</b>	BLACK
<b>02</b>	WHITE
<b>03</b>	RED
<b>04</b>	LT. GRAY



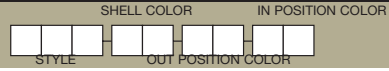
Dimensions are shown: Inches (mm)  
Specifications and dimensions subject to change

# F Series Pushbutton Switches



A Pushbutton

## MECHANICAL BUTTON



### STYLE

**F01** FA100



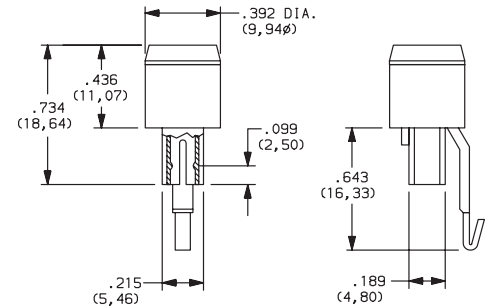
**F02** FA101



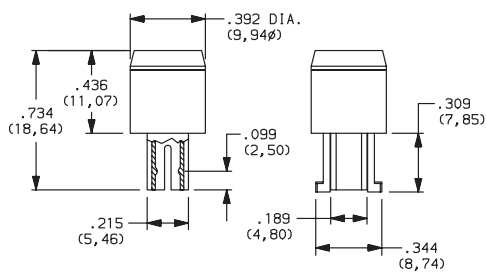
**F07** FA120



**F08** FA201



**F11** FA200



### SHELL COLOR

**01** BLACK

### OUT POSITION COLOR

**01** BLACK

### IN POSITION COLOR

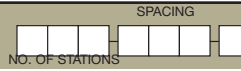
OPTION CODE	COLOR
<b>02</b>	WHITE
<b>06</b>	YELLOW
<b>07</b>	BLUE
<b>08</b>	GREEN
<b>12</b>	ORANGE



# F Series Pushbutton Switches

Pushbutton  
A

**CHASSIS**



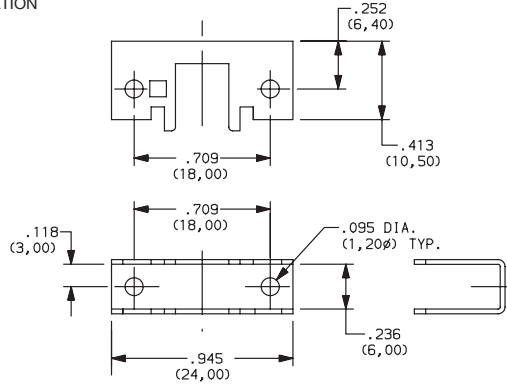
## NUMBER OF STATIONS

**C00 Thru C10** Comes with standard 0.094 (2,44mm) mounting holes

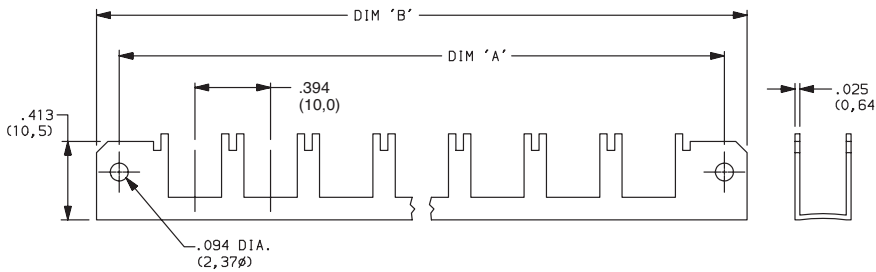
**NOTE:** Single station chassis available with mounting configurations, consult factory.

## SPACING

**00** SINGLE STATION

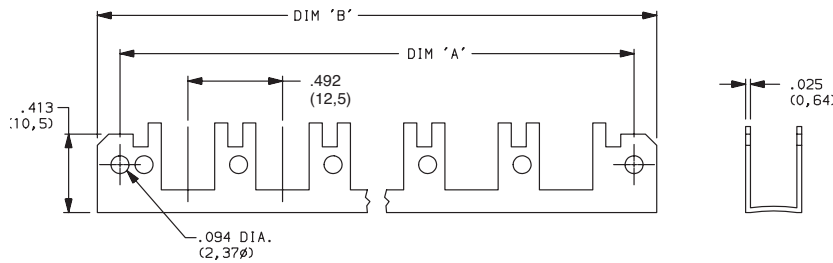


**10** 10mm

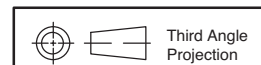


No. of Stations	Dim. 'A'	Dim. 'B'	Tolerance
2	1.182 (30,02)	1.418 (36,02)	0.005
3	1.575 (40,01)	1.811 (46,00)	0.010
4	1.969 (50,01)	2.205 (56,01)	0.010
5	2.363 (60,02)	2.599 (66,01)	0.010
6	2.757 (70,03)	2.993 (76,02)	0.015
7	3.150 (80,01)	3.386 (86,00)	0.015
8	3.544 (90,02)	3.780 (96,01)	0.015
9	3.938 (100,03)	4.174 (106,02)	0.015
10	4.331 (110,01)	4.567 (116,00)	0.015

**12.5** 12.5mm



No. of Stations	Dim. 'A'	Dim. 'B'	Tolerance
2	1.200 (30,48)	1.436 (36,47)	0.005
3	1.692 (42,98)	1.928 (48,97)	0.010
4	2.184 (55,47)	2.420 (61,47)	0.010
5	2.676 (67,97)	2.912 (73,96)	0.010
6	3.169 (80,49)	3.405 (86,49)	0.015
7	3.661 (92,99)	3.897 (98,98)	0.015
8	4.153 (105,49)	4.389 (111,48)	0.015
9	4.645 (117,98)	4.881 (123,98)	0.015
10	5.137 (130,48)	5.373 (136,47)	0.015



Dimensions are shown: Inches (mm)  
Specifications and dimensions subject to change



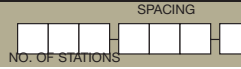


# F Series Pushbutton Switches



A Pushbutton

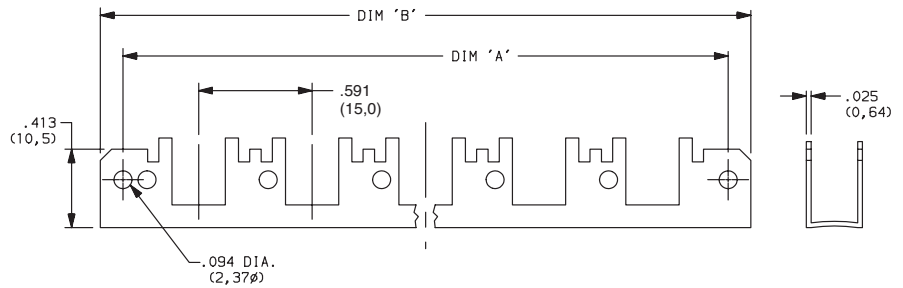
CHASSIS



## SPACING

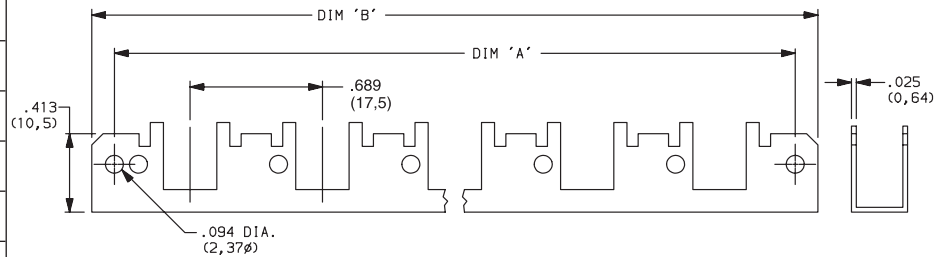
### 15 15mm

No. of Stations	Dim. 'A'	Dim. 'B'	Tolerance
2	1.374 (34,90)	1.615 (41,02)	0.005
3	1.969 (50,01)	2.205 (56,01)	0.010
4	2.560 (65,02)	2.796 (71,02)	0.010
5	3.150 (80,01)	3.386 (86,00)	0.010
6	3.741 (95,02)	3.977 (101,02)	0.015
7	4.332 (110,03)	4.568 (116,03)	0.015
8	4.922 (125,02)	5.158 (131,01)	0.015
9	5.513 (140,03)	5.749 (146,02)	0.015
10	6.103 (155,02)	6.339 (161,01)	0.015



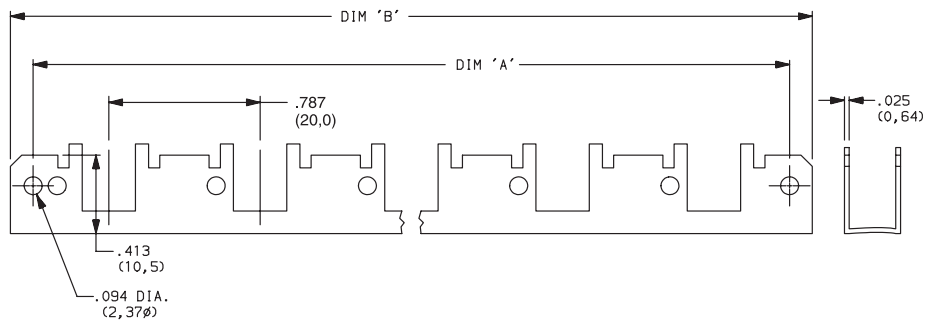
### 17.5 17.5mm

No. of Stations	Dim. 'A'	Dim. 'B'	Tolerance
2	1.477 (37,52)	1.713 (43,51)	0.005
3	2.166 (55,02)	2.402 (61,01)	0.010
4	2.855 (75,52)	3.091 (78,51)	0.010
5	3.544 (90,02)	3.780 (96,01)	0.010
6	4.233 (107,52)	4.469 (113,51)	0.015
7	4.922 (125,02)	5.158 (131,01)	0.015
8	5.611 (142,52)	5.847 (148,51)	0.015
9	6.300 (160,02)	6.536 (166,01)	0.015
10	6.989 (177,52)	7.225 (183,52)	0.015



### 20 20mm

No. of Stations	Dim. 'A'	Dim. 'B'	Tolerance
2	1.575 (40,01)	1.811 (46,00)	0.005
3	2.363 (60,02)	2.599 (66,01)	0.010
4	3.150 (80,01)	3.386 (86,00)	0.010
5	3.938 (100,03)	4.174 (106,02)	0.010
6	4.725 (120,02)	4.961 (126,01)	0.015
7	5.512 (140,00)	5.748 (146,00)	0.015
8	6.300 (160,02)	6.536 (166,01)	0.015
9	7.087 (180,01)	7.323 (186,00)	0.015
10	7.875 (200,03)	8.111 (206,02)	0.015



Dimensions are shown: Inches (mm)  
Specifications and dimensions subject to change



# Mouser Electronics

Authorized Distributor

Click to View Pricing, Inventory, Delivery & Lifecycle Information:

## C&K Components:

[539-0092-009](#)

## C&K Switches:

[21125](#) [110176](#) [F08010112](#) [F11010108](#) [F08010106](#) [100100-7152](#) [170100-2506](#) [F02010112](#) [F1602](#) [F1404](#)  
[F07010102](#) [100200-1016](#) [C1010](#) [3505](#) [F2UEETB](#) [C10175](#) [F1301](#) [169-0019-002](#) [169-0019-003](#) [169-0019-001](#)  
[169-0019-005](#) [RELBARF7X15NICKELPLTD](#) [ZF UNTERTEIL](#) [ZF MUTTER](#) [ZF SCHRAUBBLENDE BK](#) [ZF0BERTEIL](#)

# Mouser Electronics

Authorized Distributor

Click to View Pricing, Inventory, Delivery & Lifecycle Information:

## C&K Switches:

[F1604](#) [51902 \(F8UEE\)](#) [F1504](#) [F07-01](#) [F1904](#) [F15-02](#) [21125](#) [F08010102](#) [F08010108](#) [F11010102](#) [F11010112](#)  
[F02010108](#) [F08010107](#) [F6U0ATB](#) [115-0058-001](#) [F0102](#) [F0104](#) [F0202](#) [F0204](#) [F1203](#) [F1201](#) [F1204](#) [F0203](#) [FLT](#)  
[2U EE 01A](#) [FLT 4U EE 01A](#) [100100-2019](#) [100100-4004](#) [F02010112](#) [SF2UEE](#) [SF2UEELB](#) [SF4UEE](#) [SF 2U OA](#)  
[SF4UPEE](#) [SF2US2EE](#) [SF2UPEE](#) [SF4U72EE](#) [SF 2U P EE LB](#) [SF 4U EE LB](#) [SF 4U P EE LB](#) [SF 6U EE LB](#)  
[F0U0ACUTREAR](#) [F01010107](#) [F01010112](#) [F02010106](#) [F050101OPQ](#) [F01010102](#) [F0208](#) [F2U0A](#) [F07010112](#)  
[F01010106](#) [F02010107](#) [F01010108](#) [F0UEEW2UPLGR](#) [F2U0ATB](#) [F6U0A](#) [C0715](#) [F0U0ACUTREAR](#) [F4U0A](#)  
[F4U0ATB](#) [F1502](#) [F4U0ASP](#) [F4U0ATBAU](#) [F6U0ATB](#) [F8U0A](#)