

This drawing involves proprietary design rights of Tyco Electronics Corporation, and all design, manufacture, reproduction, use and sale rights regarding the same are expressly reserved. It is submitted for a specific purpose and the recipient by accepting this drawing, assumes custody and control and agrees to take reasonable precautions; (a) that this drawing will not be copied and reproduced, in whole or in part, or its contents revealed in any manner, or to any person except to meet the purpose for which it was delivered and (b) that any special features peculiar to this design will not be incorporated in other projects without the expressed written permission of Tyco Electronics Corporation.

REVISIONS			
EC	REV	DESCRIPTION	DATE
0S1Q-0407-04	E	DRAWING WAS 999-659-3D1. WAS TIN/LEAD PLATED PC TAILS	30AUG04

7. MODULE INFORMATION

CONNECTOR	TYCO PART NUMBER	ELCON PART NUMBER	EQUIV. CATALOG MODULE #		QTY	SIZE NO.	CONTACT QTY	MATING PIN	MAX. CURRENT (PER CONTACT)	CONTACT SPACING	VOLTAGE RATING*
PIN	6648102-1	479-0629-10300E	FP1817	POWER	1	8	4	1.25 X 7.00 [.049 X .276]	35 AMPERES	7.50 [.2953]	250 VOLTS
				SIGNAL		22	24	.64 [.025] SQ.	3 AMPERES	2.50 [.0984]	125 VOLTS

*IAW IEC-950

NOTES: UNLESS OTHERWISE SPECIFIED;

1. PART NUMBER CHANGES AND OR DESIGN CHANGES AFFECTING ITEM INTERCHANGEABILITY REQUIRE PRIOR ELCON APPROVAL AND AUTHORIZATION BY REVISION TO THIS DRAWING.

2. MATERIALS:

INSULATORS: THERMOPLASTIC, GLASS REINFORCED, COLOR-BLACK, UL94V-0 FLAMMABILITY RATED.

SOLDER SIGNAL PIN: BRASS ALLOY.

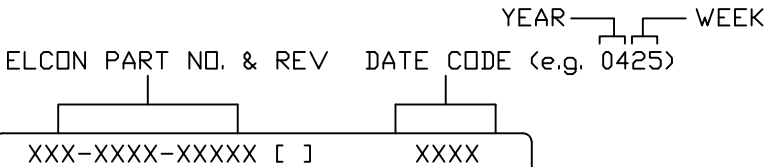
POWER CONTACTS: PHOSPHOR-BRONZE ALLOY.
COPPER ALLOY.

3. FINISHES:

CONTACTS: GOLD PLATED PER MIL-G-45204 TYPE II, CLASS 0,
OVER NICKEL PER QQ-N-290, CLASS 2, .
SOLDER TAILS, TIN PLATE, MATT FINISH, PER ASTM-B545.

4 ALL 24 PIN SIGNAL MODULE ARE PREMATE PINS.

5 ITEMS PROVIDED TO THIS SPECIFICATION TO BE PERMANENTLY IDENTIFIED PER THE FOLLOWING IDENTIFIER LABEL:

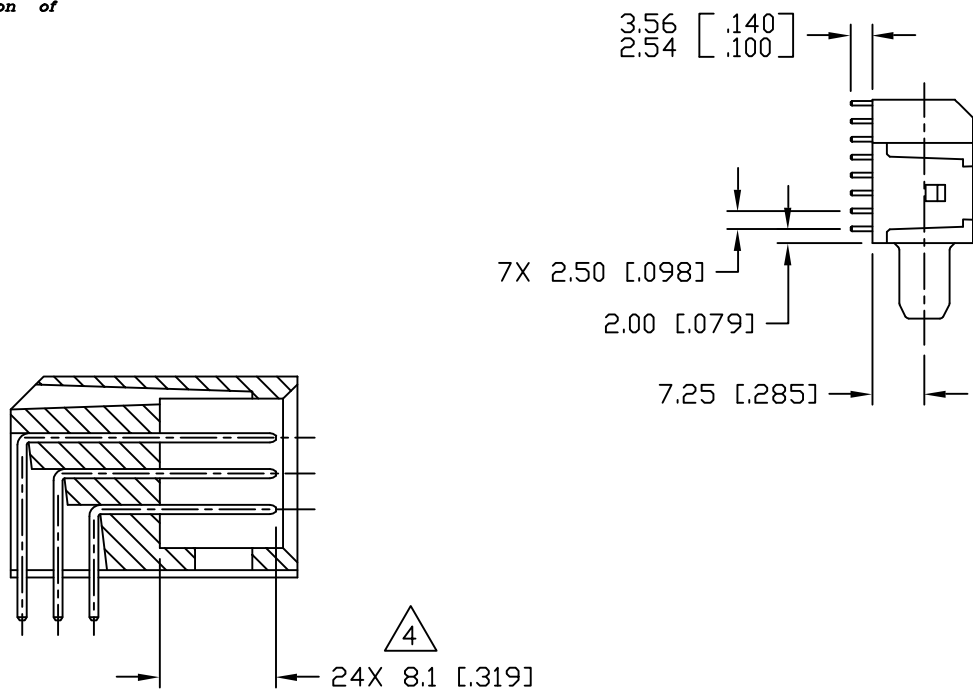


6. THIS CONNECTOR MATES WITH SOCKET CONNECTORS PN 278-0629-00200 OR 278-0629-00400

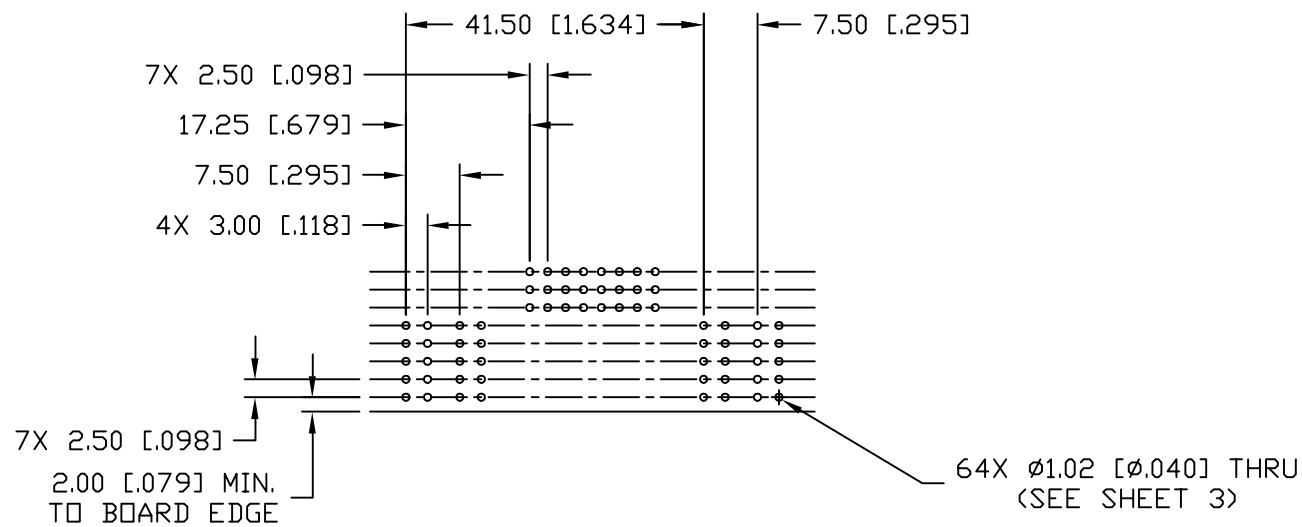
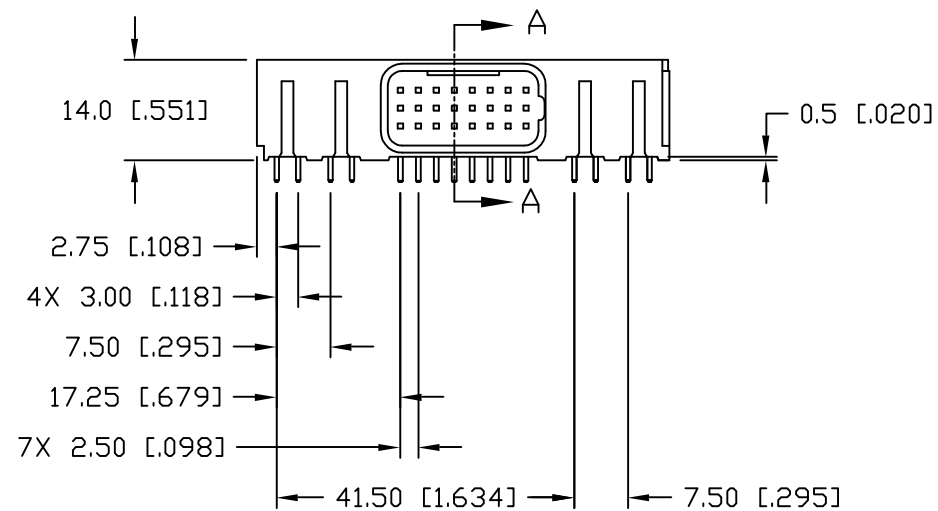
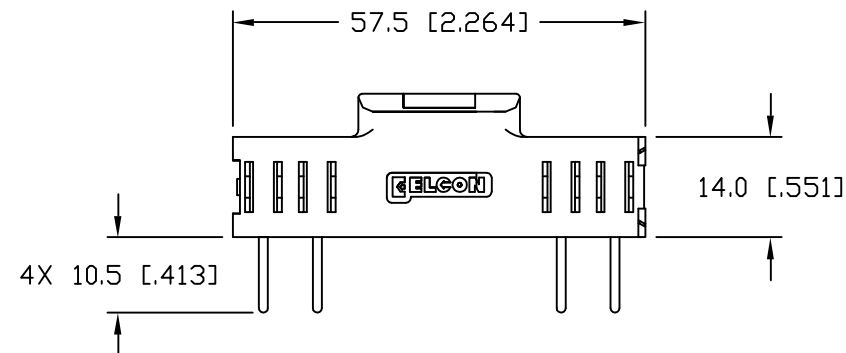
<div>← MM OR MM [INCH] INCH</div> <div>THIRD ANGLE PROJECTION</div> <div>UNLESS OTHERWISE SPECIFIED DIMENSIONS ARE IN METRIC [INCHES]</div> <div>TOLERANCES</div> <div>ANGLES ± .5°</div> <div>DECIMALS</div> <div>.XXX ± .25 [.010]</div> <div>.XX ± .5 [.02]</div>	DRAWN C FRENCH	DATE 10AUG04	<div>tyco Tyco Electronics Corporation Electronics Menlo Park, Ca 94025</div> <div>ELCON</div>		
	CHECKED		TITLE		
	APPROVED		PIN CONNECTOR, FLATPAQ RIGHT ANGLE, SHORT SOLDER TAILS, DEDICATED PN: 479-0629-10300E		
	APPROVED				
	D. CHAU	30NOV04	SIZE B	DWG NUMBER C= 6648102	REV. E
M. ALIM		07JAN05			
ACAD FILE NUMBER		C6648102E.DWG			
		DWG SCALE 1=1		SH 1 OF 3	

This drawing involves proprietary design rights of Tyco Electronics Corporation, and all design, manufacture, reproduction, use and sale rights regarding the same are expressly reserved. It is submitted for a specific purpose and the recipient by accepting this drawing, assumes custody and control and agrees to take reasonable precautions; (a) that this drawing will not be copied and reproduced, in whole or in part, or its contents revealed in any manner, or to any person except to meet the purpose for which it was delivered and (b) that any special features peculiar to this design will not be incorporated in other projects without the expressed written permission of Tyco Electronics Corporation.

REVISIONS			
EC	REV	DESCRIPTION	DATE
		SEE SHEET 1	



SECTION A-A



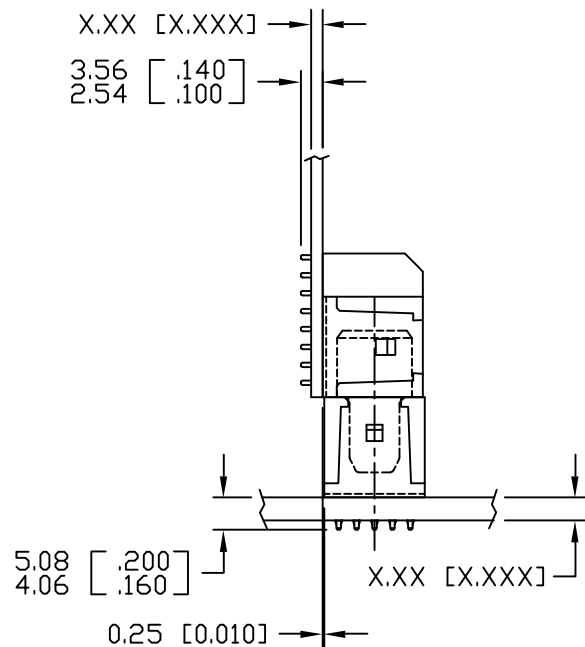
PRINTED CIRCUIT LAYOUT

<div><div><div>← MM INCH</div><div>OR MM [INCH]</div></div><div></div><div>THIRD ANGLE PROJECTION</div></div> <div>UNLESS OTHERWISE SPECIFIED DIMENSIONS ARE IN METRIC [INCHES]</div> <div>TOLERANCES</div> <div>ANGLES ± .5°</div> <div>DECIMALS</div> <div>.XXX ± .25 [.010]</div> <div>.XX ± .5 [.02]</div>	DRAWN C FRENCH	DATE 10AUG04	<div><div><div>tyco</div><div>Electronics</div></div><div>Tyco Electronics Corporation Menlo Park, Ca 94025</div><div>ELCON</div></div>		
	CHECKED		TITLE PIN CONNECTOR, FLATPAQ RIGHT ANGLE, SHORT SOLDER TAILS, DEDICATED PN: 479-0629-10300E		
	APPROVED				
	APPROVED				
	D. CHAU	30NOV04	SIZE	DWG NUMBER	
DCA APPROVED	07JAN05	B	C= 6648102		E
M. ALIM		ACAD FILE NUMBER C6648102E.DWG			DWG SCALE 1=1 SH 2 OF 3

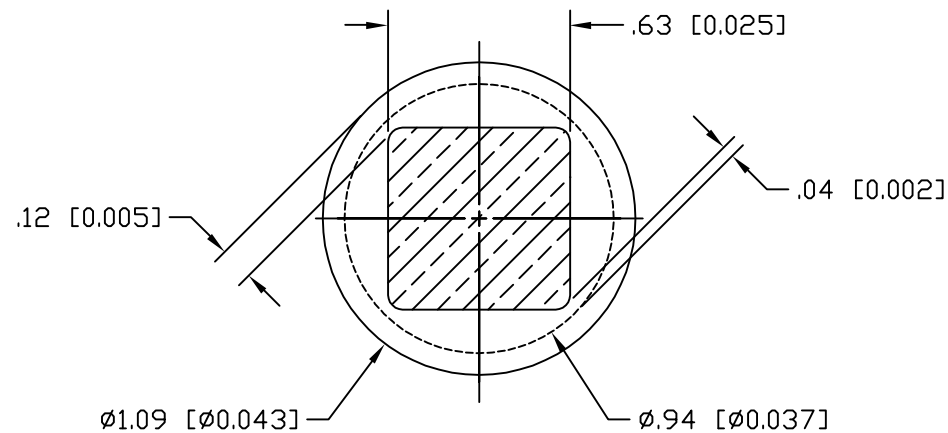
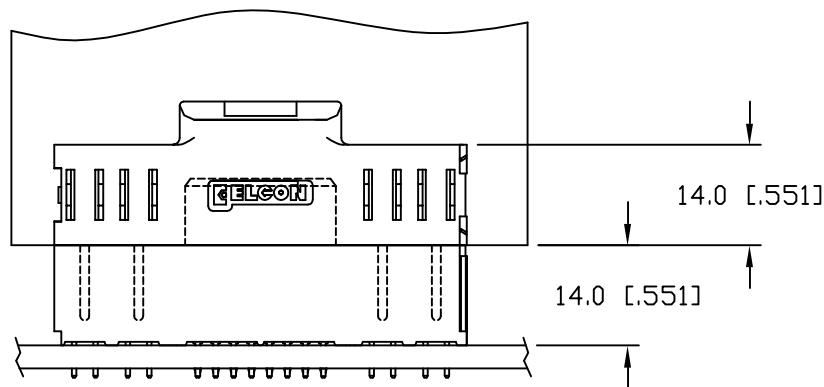
This drawing involves proprietary design rights of Tyco Electronics Corporation, and all design, manufacture, reproduction, use and sale rights regarding the same are expressly reserved. It is submitted for a specific purpose and the recipient by accepting this drawing, assumes custody and control and agrees to take reasonable precautions; (a) that this drawing will not be copied and reproduced, in whole or in part, or its contents revealed in any manner, or to any person except to meet the purpose for which it was delivered and (b) that any special features peculiar to this design will not be incorporated in other projects without the expressed written permission of Tyco Electronics Corporation.

P.C. BOARD
SURFACE REF.

SHORT SOLDER TAIL DETAIL
SCALE: 10 : 1



MATED CONDITION
479-0629-10300 WITH 278-0629-00200 OR 278-0629-00400



SIGNAL SOLDER TAIL TERMINATION AREA

SCALE: 40 : 1
RECOMMENDED PRINTED CIRCUIT HOLE
SOLDER OR COMPLIANT PRESS FIT
FINISHED HOLE: $\varnothing 1.02$ [.040] $\pm .08$ [.003]
DRILLED HOLE: $\varnothing 1.15$ [.0453] $\pm .013$ [.0005]
COPPER PLATE: .025 [.0010] MINIMUM (PER SURFACE)
TIN PLATE: .008 [.0003] MINIMUM (PER SURFACE)

<div>MM INCH</div> <div></div> <div>THIRD ANGLE PROJECTION</div>		DRAWN C FRENCH		DATE 10AUG04		<div>tyco Electronics</div> <div>Tyco Electronics Corporation Menlo Park, Ca 94025</div> <div>ELCON</div>					
UNLESS OTHERWISE SPECIFIED DIMENSIONS ARE IN METRIC [INCHES] TOLERANCES ANGLES ± .5° DECIMALS .XXX ± .25 [.010] .XX ± .5 [.02]		CHECKED				TITLE USER INFORMATION SHORT SOLDER TAIL TERMINATION AND MATED CONDITION					
		APPROVED									
		APPROVED									
		D. CHAU		30NOV04							
		DCA APPROVED		07JAN05		SIZE B		DWG NUMBER C= 6648102		REV. E	
		ACAD FILE NUMBER		C6648102E.DWG				DWG SCALE 1=1		SH 3 OF 3	

Mouser Electronics

Authorized Distributor

Click to View Pricing, Inventory, Delivery & Lifecycle Information:

[TE Connectivity:](#)

[6648102-1](#)