

.100" X .100" LATCH/EJECTOR, STRAIGHT AND RIGHT ANGLE




X3XXX-XXXXXX

3M IS A TRADEMARK OF 3M COMPANY.
FOR TECHNICAL, SALES OR ORDERING
INFORMATION CALL 800-225-5373

INSULATOR:
MATERIAL: GLASS FILLED POLYESTER (PCT)
FLAMMABILITY: UL94V-0
COLOR: BLACK
CONTACT:
MATERIAL: COPPER ALLOY
PLATING:
UNDER PLATING: 100 μ " [2.54 μ m] NICKEL-OVERALL
WIPING AREA: 30 μ " [0.76 μ m] AVG. GOLD
SOLDER TAILS: 200 μ " [5.08 μ m] TIN LEAD OR MATTE TIN (SEE ORDERING INFORMATION)
MARKINGS: 3M LOGO, PART IDENTIFICATION NUMBER AND ORIENTATION TRIANGLE

INSULATION RESISTANCE: $>1 \times 10^9 \Omega$ AT 500 V_{DC}
WITHSTANDING VOLTAGE: 1,000V_{RMS} AT SEA LEVEL

TEMPERATURE RATING: -55°C TO 105°C
PROCESS RATING: 260°C, PER J-STD-020C, SINGLE PASS
MOISTURE SENSITIVITY LEVEL: 1 (PER J-STD-020C)

DESIGN REFERENCE		NEXT ASSEMBLY		REV		ECO		ISSUE DATE AND DESCRIPTION		DFT		CHKD			
ACCESS CODES				CAST		IGL		ONE		DATE		AUG 05, 2014			
				CHD		DATE				APPRV		R. SCHERER			
										DATE		SEP 05, 2014			
DIVISION				DIVISION CODE				© 3M COPYRIGHT 2015							
Interconnect Solutions				EMSD				3M Center St. Paul, MN 55144		This document and the information it contains are 3M property and may not be reproduced or further distributed without 3M permission, or used or disclosed other than for 3M authorized purposes. All rights reserved.					
DO NOT SCALE DRAWING		SCALE 2 1		TOLERANCES EXCEPT AS NOTED		3M		TITLE							
								HEADER, 3-WALL, .100 X .100 LATCH/EJECTOR, STRAIGHT & RA							
				INCHES .0 .00 .000 .0000											
THIRD ANGLE PROJECTION				MILLIMETERS .0 .00 .000 .0000											
INTERPRET PER ASME Y14.5 - 2009				.0 .00 .000 .0000											
MAX SURFACE ROUGHNESS		DATE		.0 .00 .000 .0000		CAGE NUMBER		SIZE		DRAWING NO.		REV.			
DATE		MAX SURFACES		.0 .00 .000 .0000		D		78-5100-0771-5		H		H			
<input checked="" type="checkbox"/> MARKED ONLY		<input type="checkbox"/> UNMARKED ONLY		.0 .00 .000 .0000		MODEL		3000 SERIES		DET.		LISTS <input type="checkbox"/> YES <input checked="" type="checkbox"/> NO			
				.0 .00 .000 .0000		ANGLES				SHT		1 OF 1			

UL
UL FILE NO: E68080

5 THE RECOMMENDED PCB HOLE SIZE
FOR THE KINKED TAIL POSITIONS
ON THE .112 SOLDER TAIL
CONNECTOR IS $\varnothing .035 \pm .002$.
(SEE K2 VERSION).

.100" X .100" LATCH/EJECTOR, STRAIGHT AND RIGHT ANGLE

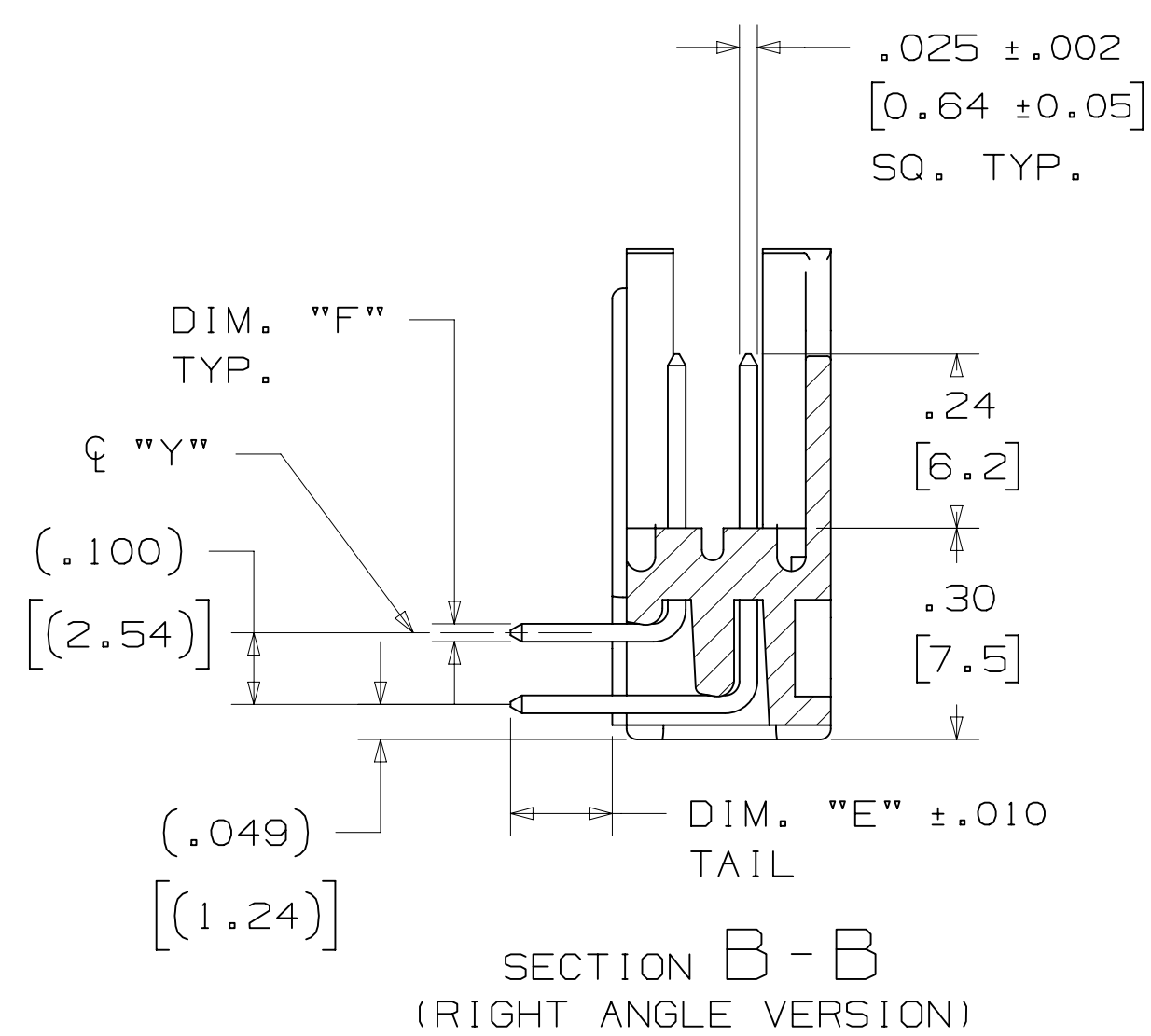
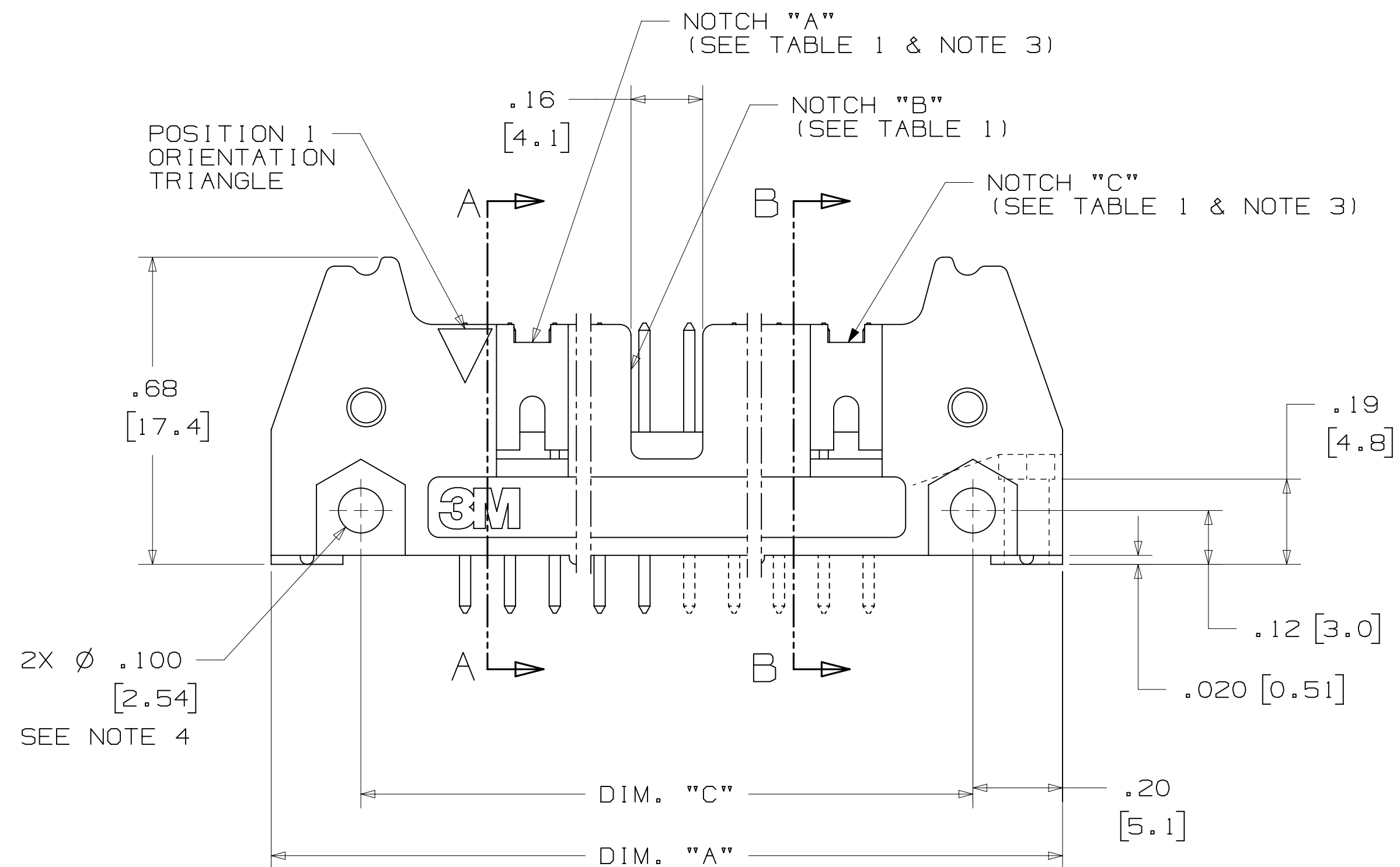
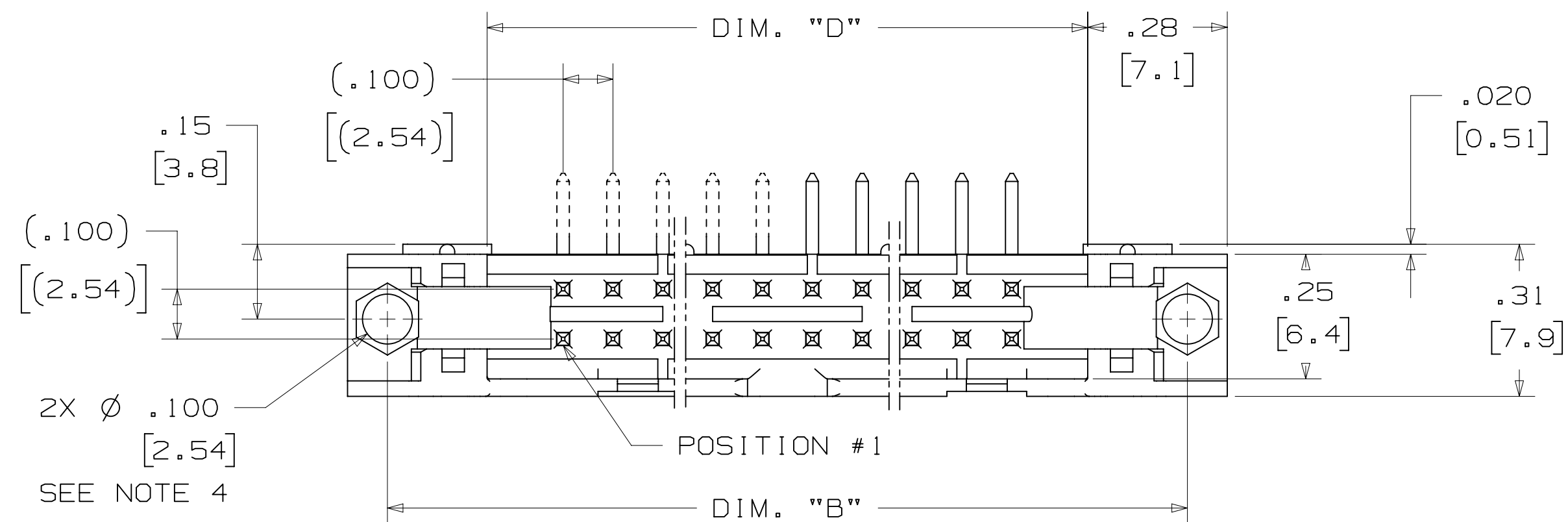





TABLE 1							
PIN QTY.	3M PART NUMBER	DIM. "A"	DIM. "B"	DIM. "C"	DIM. "D"	POLARIZING NOTCHES	PIN QTY.
10	3793	1.26 [32.1]	1.105 [28.04]	.865 [21.97]	.71 [18.0]	BC	10
14	3314	1.46 [37.2]	1.305 [33.12]	1.065 [27.05]	.91 [23.1]	BC	14
16	3408	1.56 [39.7]	1.405 [35.66]	1.165 [29.59]	1.01 [25.6]	ABC	16
20	3428	1.76 [44.8]	1.604 [40.74]	1.365 [34.67]	1.21 [30.7]	ABC	20
26	3429	2.06 [52.4]	1.905 [48.36]	1.665 [42.29]	1.51 [38.3]	ABC	26
34	3431	2.46 [62.6]	2.305 [58.52]	2.065 [52.45]	1.91 [48.5]	ABC	34
40	3432	2.76 [70.2]	2.605 [66.14]	2.365 [60.07]	2.21 [56.1]	ABC	40
50	3433	3.26 [82.9]	3.105 [78.84]	2.865 [72.77]	2.71 [68.8]	ABC	50
60	3372	3.76 [95.6]	3.605 [91.54]	3.365 [85.47]	3.21 [81.5]	ABC	60
64	3764	3.96 [100.7]	3.805 [96.62]	3.565 [90.55]	3.41 [86.6]	ABC	64

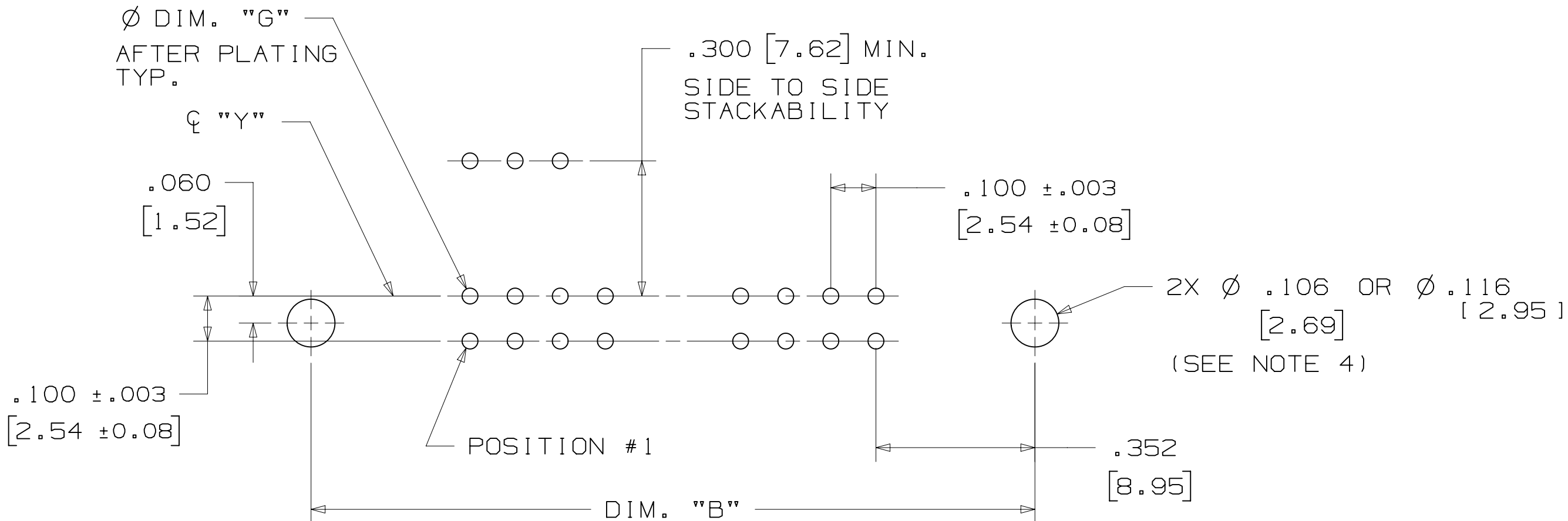
TABLE 2						
3M PART NUMBER SUFFIX	CONTACT TAIL	DIM. "E"	PIN CROSS SECTION			DIM. "G"
-1XX2	.062 [1.57] THICK PC BOARD	.112 [2.84]	DIM. "F"	DIAGONALS	CORNER RADIUS	.035+/- .003 [.89] SEE NOTE 5
-2XX2			.0245+/- .0005 [.622]	.028+/- .001 [.71]	.0075 REF. [.191]	
-1X03	.094 [2.39] TO .125 [3.18] THICK PC BOARD	.155 [3.94]	.0245+/- .0005 [.622]	.028+/- .001 [.71]	.0075 REF. [.191]	.035+/- .003 [.89]
-2X03						



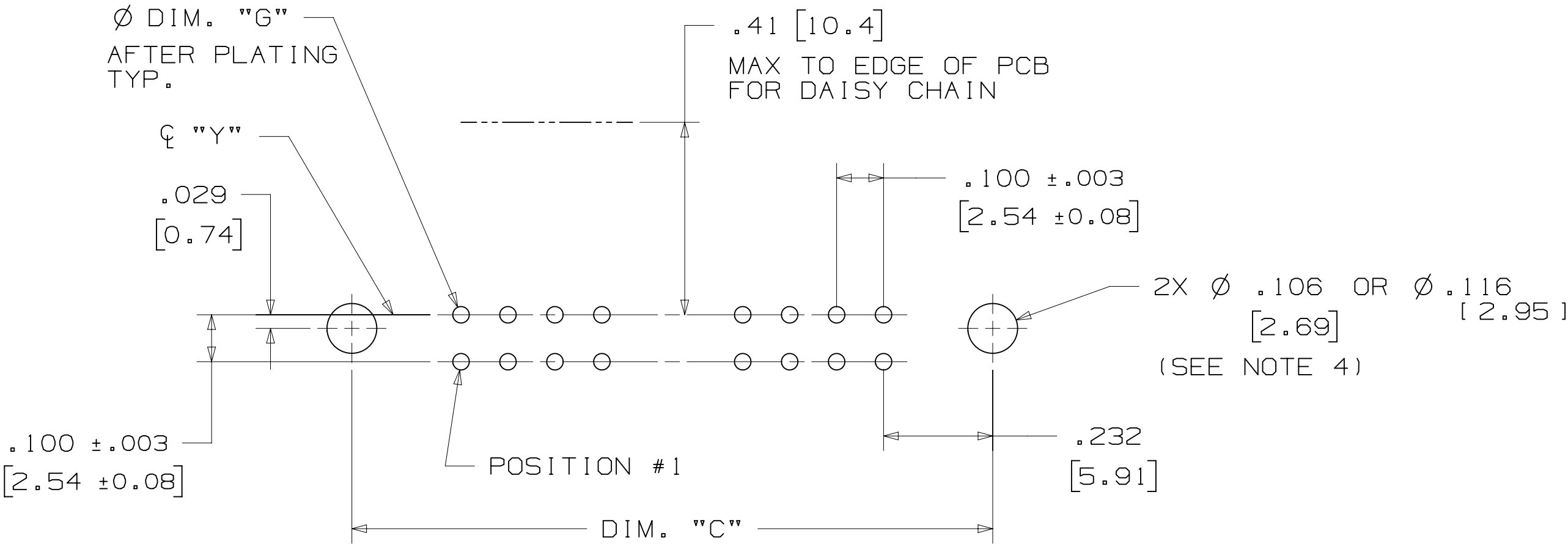
H	60056	MAR 06,2015			JNC	RS
		REVISED ORDERING				
		NUMBER				
G	56068	AUG 05,2014			JNC	RS
		REVISED AND REDRAWN				
REV	ECO	ISSUE DATE AND DESCRIPTION			DRFT	CHKD
DRFT CASTIGLIONE		DATE AUG 05,2014	MFG	DATE		
CHKD		DATE	APPROVAL R. SCHERER		DATE SEP 05,2014	
 3M Center St. Paul, MN 55144		© 3M COPYRIGHT 2015 This document and the information it contains are 3M property and may not be reproduced or further distributed without the written 3M permission, or used or disclosed other than for 3M authorized purposes. All rights reserved.				
TITLE						
HEADER, 3-WALL, .100 X .100 LATCH/EJECTOR, STRAIGHT & RA						
CAGE NUMBER	SIZE	DRAWING NO.				REV.
D		78-5100-0771-5				H
MODEL		3000 SERIES		DET. LISTS <input type="checkbox"/> YES <input checked="" type="checkbox"/> NO SHT 2 OF 4		

DESIGN REFERENCE		NEXT ASSEMBLY	
ACROSS CODES			
DIVISION		DIVISION CODE	
Interconnect Solutions		EMSD	
DO NOT SCALE DRAWING	SCALE 4 1	TOLERANCES EXCEPT AS NOTED	
 THIRD ANGLE PROJECTION		INCHES	
		.00 ± .01	
		.000 ± .005	
		.0000 ±	
		MILLIMETER	
INTERPRET PER ASME Y14.5 - 2009		0 ±	
MAX. SURFACE ROUGHNESS  <input checked="" type="checkbox"/> DIM. SURFACES <input type="checkbox"/> MARKED ONLY		.00 ±	
		.00 ± .13	
		.000 ±	
		ANGLES ±	

3M™ THREE-WALL HEADER, 3000 SERIES
.100" X .100" LATCH/EJECTOR, STRAIGHT AND RIGHT ANGLE



RECOMMENDED MOUNTING HOLE PATTERN
(STRAIGHT VERSION)



RECOMMENDED MOUNTING HOLE PATTERN
(RIGHT ANGLE VERSION)

PART CUSTOMIZATION

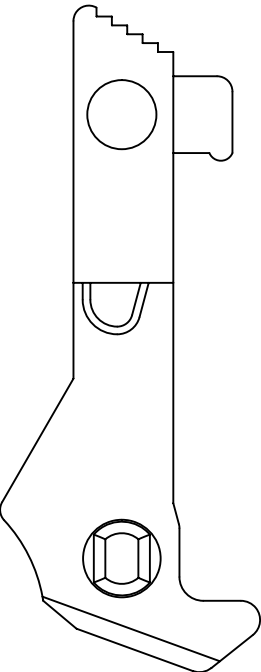
THIS SPEC SHEET DETAILS OUR STANDARD OFFERING.

3M HAS SEVERAL CAPABILITIES THAT CAN PROVIDE A PART TAILORED TO YOUR SPECIFIC NEEDS. ASK YOUR 3M SALES REPRESENTATIVE OR CUSTOMER SERVICE FOR MORE DETAILS.

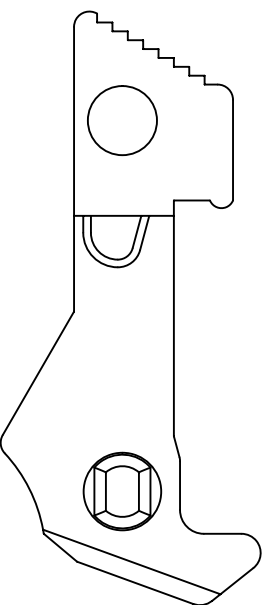
BOTH SNAP-IN AND ROLL PIN LATCHES MAY BE ORDERED SEPARATELY. SNAP-IN AND ROLL PIN STYLE LATCHES ARE DIMENSIONALLY AND FUNCTIONALLY EQUIVALENT. IF ORDERING SNAP-IN OR ROLL PIN STYLE LATCHES SEPARATELY, PLEASE USE THE BELOW CHART.

MATERIAL	SHORT LATCH	LONG LATCH	LATCH STYLE	COLOR
HIGH TEMP. (PCT)	N3505-2B	N3505-3B	ROLL PIN	BLACK
HIGH TEMP (PPA)	N3505-30B	N3505-31B	SNAP-IN	BLACK

- * SELECTIVE PIN REMOVAL (ATA OR OTHER COMPATABILITY)
- * WIRE WRAP TAILS STYLE

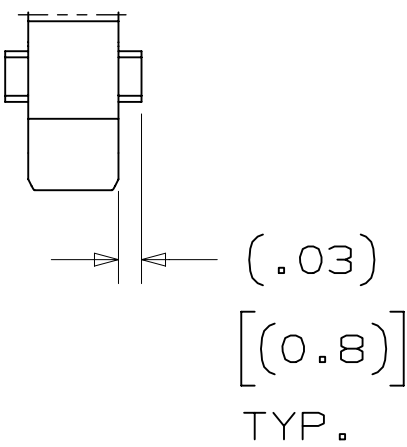


LONG



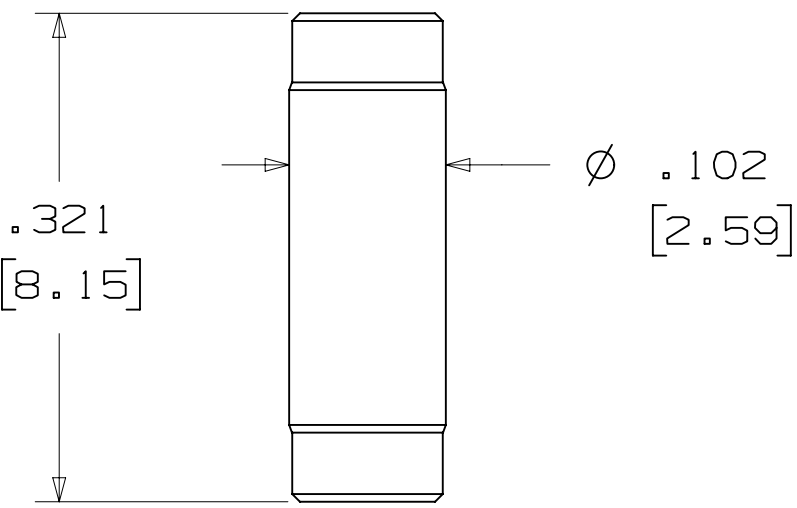
SHORT

SNAP-IN LATCHES



NOTE:
SNAP-IN LATCHES CAN ONLY BE ORDERED SEPARATELY AND ARE THE CUSTOMERS RESPONSIBILITY TO INSTALL.

POLARIZING POST



3M PART NO.	MATERIAL	COLOR
3201-4	LCP	BLACK

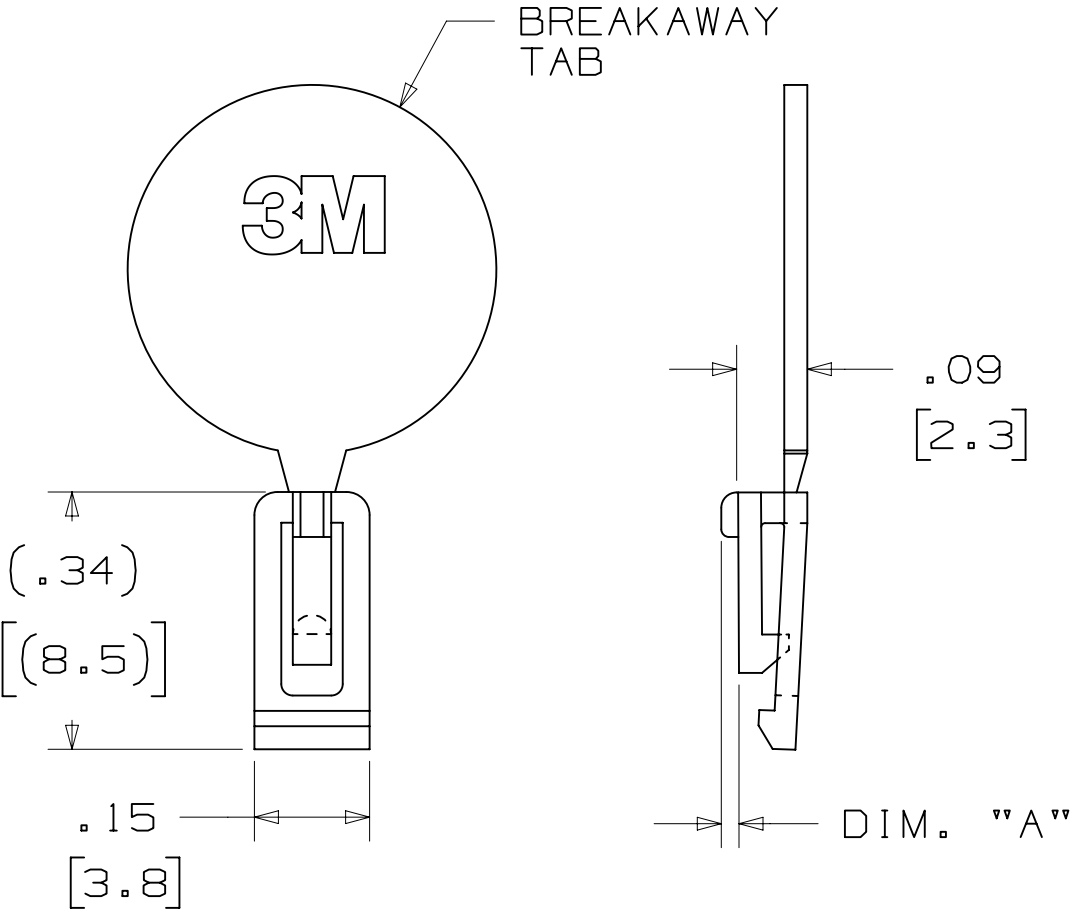
NOTE:
INSERT POST INTO ONE MOUNTING HARDWARE HOLE ON BOTTOM OF HEADER. SET POST TO PROTRUDE .115 [2.92]

(K2) OPTION

2500 & 3000 SERIES SHROUDED HEADER					
TOTAL NO. OF PINS	NO. OF TAILS KINKED	POSITIONS KINKED			
10	4	3	4	7	8
14	4	3	4	11	12
16	4	3	4	13	14
20	4	3	4	17	18
26	4	3	4	23	24
34	4	7	8	27	28
40	4	7	8	33	34
50	4	7	8	43	44
60	4	11	12	49	50
64	4	11	12	53	54

KINKED TAIL DETAIL:
- KINK IS LOCATED .05" BELOW BOTTOM SURFACE OF PLASTIC.
- EXTERNAL RADIUS OF KINK TOWARD PART CENTERLINE.

POLARIZING KEY



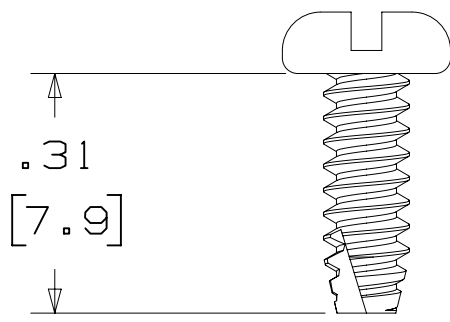
3M PART NO.	MATERIAL	COLOR	DIM. 'A'
N3518	LCP	BLACK	.02

NOTE:
#2216 B/A SCOTCHWELD CAN BE USED TO ADHERE KEYS.

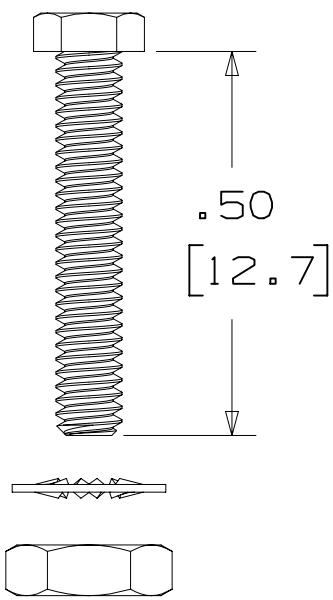
DESIGN REFERENCE		NEXT ASSEMBLY		H	60056	MAR 06,2015	REVISE ORDERING NUMBER	JNC	RS
REV		ECO		G	56068	AUG 05,2014	REVISED AND REDRAWN	JNC	RS
DIVISION		DIVISION CODE		DATE		DATE		DATE	
Interconnect Solutions		EMSD		AUG 05,2014		AUG 05,2014		SEP 05,2014	
DO NOT SCALE DRAWING		SCALE 4 1		TOLERANCES EXCEPT AS NOTED		INCHES .00 ±.01 .000 ±.0005 .0000 ±		MILLIMETERS 0 ±.3 .00 ±.13 .000 ±	
THIRD ANGLE PROJECTION		INTERPRET PER ASME Y14.5 - 2009		MAX SURFACE ROUGHNESS 12.5 SURFACES		MARKED ONLY		CAGE NUMBER D78-5100-0771-5	
MODEL 3000 SERIES		DRAWING NO. 78-5100-0771-5		REV. H		SHT 3 OF 4		REV. H	

3M™ THREE-WALL HEADER, 3000 SERIES
.100" X .100" LATCH/EJECTOR, STRAIGHT AND RIGHT ANGLE

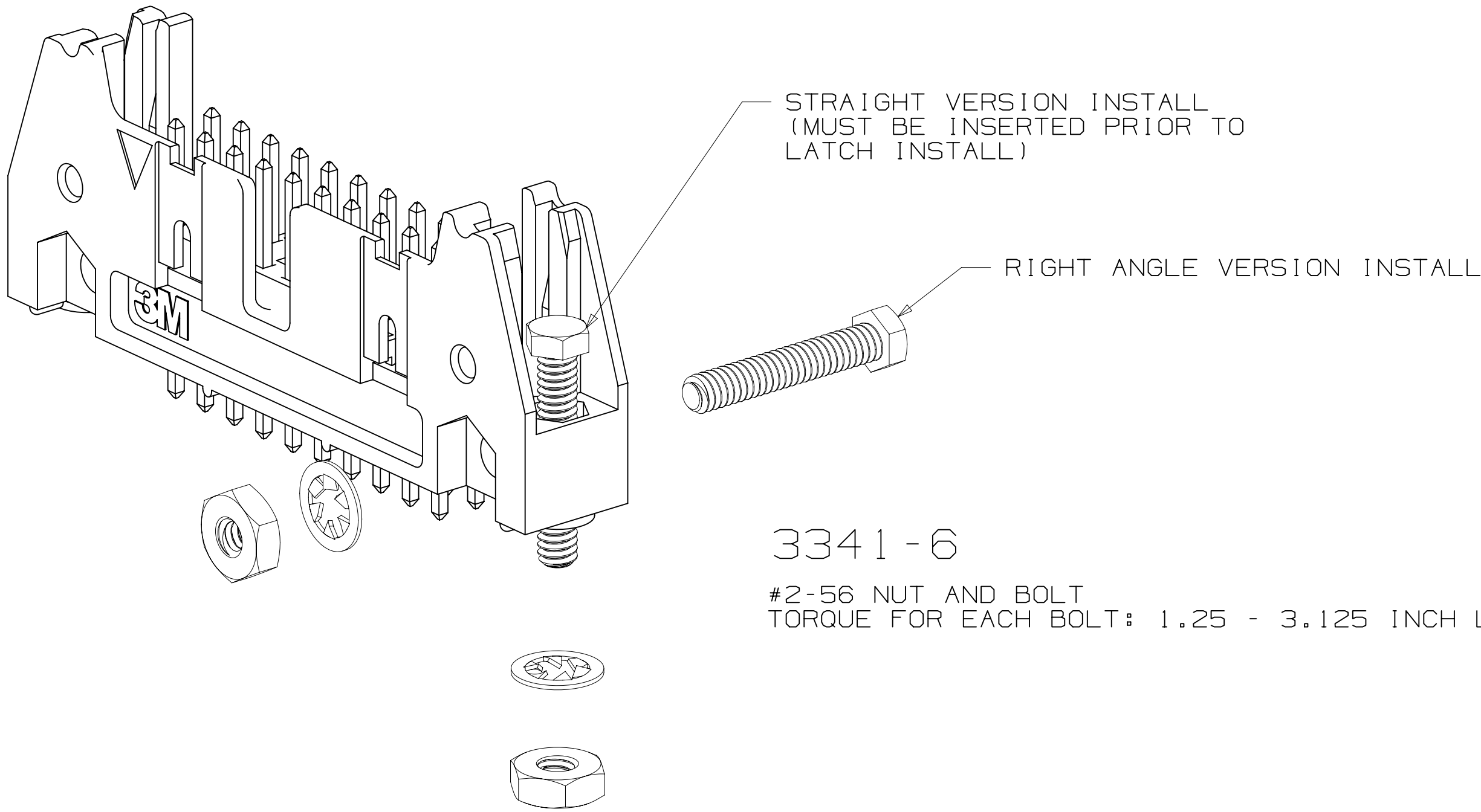
MOUNTING HARDWARE



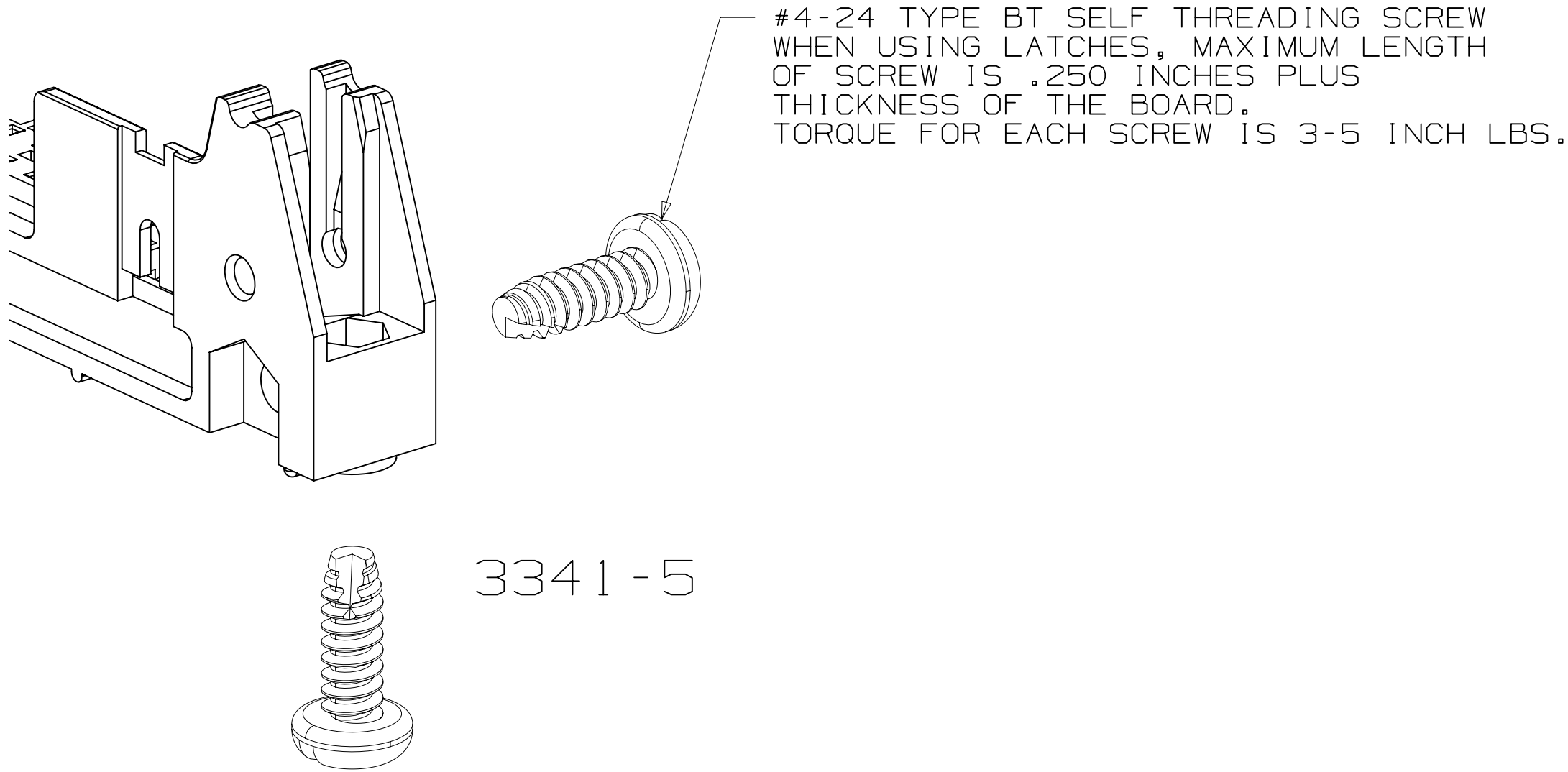
3341-5
(INSTALL FROM BOTTOM OF BOARD)
PANHEAD THREAD CUTTING SCREW:
#4-24 X 5/16"
TYPE: USA STD BT, FEDERAL B6
MATERIAL: STAINLESS STEEL



3341-6
HEX HEAD BOLT, NUT AND WASHER:
BOLT - #2-56 X 1/2"
MATERIAL: STAINLESS STEEL



3341-6
#2-56 NUT AND BOLT
TORQUE FOR EACH BOLT: 1.25 - 3.125 INCH LBS.



3341-5

DESIGN REFERENCE		NEXT ASSEMBLY		REV	ECO	ISSUE DATE AND DESCRIPTION		DRFT	CHKD
Header Codes				DR	CASTIGLIONE	DATE	AUG 05, 2014	MFG	DATE
				CHKD		DATE		APPR	DATE
								R. SCHERER	SEP 05, 2014
DIVISION		DIVISION CODE		© 3M COPYRIGHT 2015					
Interconnect Solutions		EMSD		This document and the information it contains are 3M property and may not be reproduced or further distributed without 3M permission, or used or disclosed other than for 3M authorized purposes. All rights reserved.					
DO NOT SCALE DRAWING		SCALE 4 1		TOLERANCES EXCEPT AS NOTED		3M 3M Center St. Paul, MN 55144			
THIRD ANGLE PROJECTION		INCHES .0 .00 .000 .0000 ±		MILLIMETERS 0 ± .0 .00 .000 ±		TITLE			
INTERPRET PER ASME Y14.5 - 2009		MAX SURFACE ROUGHNESS		CAGE NUMBER		HEADER, 3-WALL, .100 X .100 LATCH/EJECTOR, STRAIGHT & RA			
MARKED ONLY		ANGLES		DRAWING NO.		D 78-5100-0771-5			
				MODEL		3000 SERIES			
						DET. YES NO SHT 4 OF 4			

Mouser Electronics

Authorized Distributor

Click to View Pricing, Inventory, Delivery & Lifecycle Information:

[3M:](#)

[3408-1602UG](#) [3408-D003](#) [N3433-6305EB](#) [3447/50-300](#) [3429-L303](#) [3793-5005](#) [3429-5502UG](#) [3429-5602UG](#)
[3429-6502UG](#) [3429-6603UG](#) [3431-6602UG](#) [3432-L303](#) [3432-6603UG](#) [3433-6602UG](#) [3793-1502UG](#) [3793-6502UG](#)
[3428-6502UG](#) [3432-6602UG](#) [3793-L303](#) [3429-D303UB](#) [3428-2602UG](#) [3433-6205](#) [3314-5402](#) [3764-5503UG](#)
[3314-L303](#) [3428-1502UG](#) [3433-4305](#) [3764-L303](#) [3793-6402](#) [3432-6503UG](#) [3764-6505](#) [3428-6603UG](#) [3764-L003](#)
[3433-6005](#) [N3408-L303RB](#) [N3428-L303RB](#) [N3432-63Y2RB](#)