

Digital Phase Shifter 6-Bit, 1.4 - 2.4 GHz

Rev. V5

Features

- 6 Bit Digital Phase Shifter
- 360° Coverage with LSB = 5.6°
- Integral CMOS Driver
- Serial or Parallel Control
- Low DC Power Consumption
- Minimal Attenuation Variation over Phase Shift Range
- 50 Ω Impedance
- EAR99
- Lead-Free 4 mm 24-Lead PQFN Package
- RoHS* Compliant

Description

The MAPS-010163 is a GaAs pHEMT 6-bit digital phase shifter with an integral CMOS driver in a 4 mm PQFN plastic surface mount package. Step size is 5.6° providing phase shift from 0° to 360° in 5.6° steps. This design has been optimized to minimize variation in attenuation over the phase shift range.

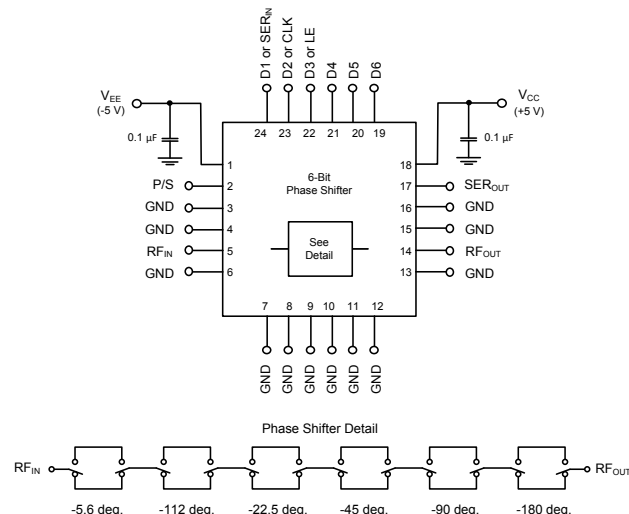
The MAPS-010163 is ideally suited for use where high phase accuracy with minimum loss variation over the phase shift range are required. The 4 mm PQFN package provides a smaller footprint than is typically available for a digital phase shifter with an internal driver. Typical applications include communications antennas and phased array radars.

Ordering Information¹

| Part Number | Package |
|--------------------|-------------------|
| MAPS-010163-TR0500 | 500 piece reel |
| MAPS-010163-001SMB | Sample Test Board |

1. Reference Application Note M513 for reel size information.

Functional Schematic



Pin Configuration²

| Pin No. | Function | Pin No. | Function |
|---------|------------------|---------|-------------------------|
| 1 | V _{EE} | 13 | GND |
| 2 | P/S | 14 | RF _{OUT} |
| 3 | GND | 15 | GND |
| 4 | GND | 16 | GND |
| 5 | RF _{IN} | 17 | SER _{OUT} |
| 6 | GND | 18 | V _{CC} |
| 7 | GND | 19 | D6 |
| 8 | GND | 20 | D5 |
| 9 | GND | 21 | D4 |
| 10 | GND | 22 | D3 or LE |
| 11 | GND | 23 | D2 or CLK |
| 12 | GND | 24 | D1 or SER _{IN} |

2. The exposed pad centered on the package bottom must be connected to RF and DC ground.

* Restrictions on Hazardous Substances, European Union Directive 2011/65/EU.

Digital Phase Shifter 6-Bit, 1.4 - 2.4 GHz

Rev. V5

Electrical Specifications:

Freq. = 1.4 - 2.4 GHz, $T_A = 25^\circ\text{C}$, $Z_0 = 50 \Omega$, $V_{CC} = +5.0 \text{ V}$, $V_{EE} = -5.0 \text{ V}$

| Parameter | Test Conditions | Units | Min. | Typ. | Max. |
|--|---|-------|----------------------------|---|---------------------------------|
| Operating Power ³ | 1.4 - 2.4 GHz | dBm | — | — | +25 |
| Insertion Loss (Any Phase State) | Any Phase State | dB | — | 5 | 6 |
| Attenuation Variation | Across All Phase States | dB | — | ± 0.8 | — |
| RMS Attenuation Error ⁴ | All Values Relative to Insertion Loss at Reference Phase | dB | — | 0.4 | — |
| RMS Phase Error ⁴ | All Values Relative to Reference Phase | deg | — | 3 | — |
| Phase Accuracy Relative to Reference Loss State | 5.6 Degree Bit 11.2 Degree Bit 22.5 Degree Bit 45 Degree Bit 90 Degree Bit 180 Degree Bit Sum of All Bits | deg | — | ± 0.5 ± 0.3 ± 2 ± 2.5 ± 3 ± 4 ± 4 | — |
| VSWR | RF Input RF Output | Ratio | — | 1.5:1 1.5:1 | — |
| 1 dB Compression | Reference State | dBm | — | 25 | — |
| Input IP3 | Two-tone inputs up to +5 dBm | dBm | — | 40 | — |
| T_{RISE} , T_{FALL} | 10% to 90% RF, 90% to 10% RF | ns | — | 50 | — |
| V_{CC} V_{EE} | — — | V | 3.0 -5.5 | — -5.0 | 5.5 -3.0 |
| V_{IL} V_{IH} | LOW-level input voltage HIGH-level input voltage | V | 0.0 $0.7 \times V_{CC}$ | — | $0.3 \times V_{CC}$ V_{CC} |
| I_{IN} (Input Control Current) | $V_{IN} = V_{CC}$ or GND | μA | — | 1 | — |
| V_{OH} V_{OL} | For serial out; $I_{OH} = -100 \mu\text{A}$ For serial out; $I_{OL} = 100 \mu\text{A}$ | V | $V_{CC} - 0.2$ — | — | — 0.2 |
| I_{CC} (Quiescent Supply Current) | $V_{CONTROL} = V_{CC}$ or GND | μA | — | — | 2 |
| I_{EE} | V_{EE} min to max $V_{IN} = V_{IL}$ or V_{IH} | mA | -1.0 | -0.1 | — |

3. Maximum operating power is the maximum power where the specifications are guaranteed.

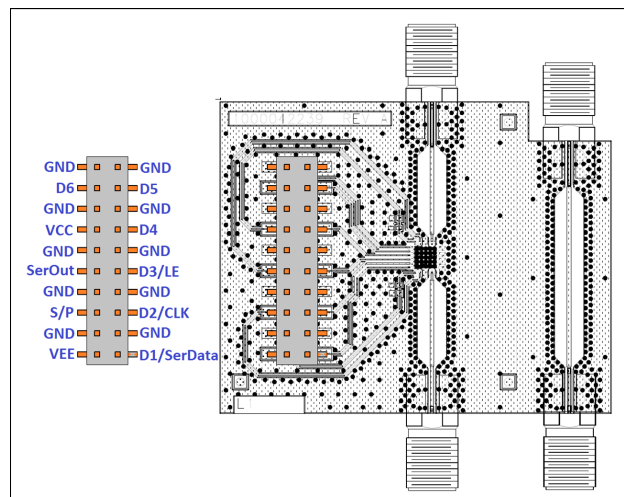
4. RMS is calculated across all 63 amplitude or phase states relative to the amplitude or phase in the 0° phase state at a given frequency.

Absolute Maximum Ratings^{5,6}

| Parameter | Absolute Maximum |
|----------------------------------|---|
| Input Power 1.4 - 2.4 GHz | +27 dBm |
| V _{CC} | -0.5 V ≤ V _{CC} ≤ +7.0 V |
| V _{EE} | -7.0 V ≤ V _{EE} ≤ +0.5 V |
| D1-D6, P/S, LE, CLK or SER IN | -0.5 V ≤ V _{IN} ≤ V _{CC} + 0.5 V |
| SER OUT | -0.5 V ≤ V _{OUT} ≤ V _{CC} + 0.5 V |
| Operating Temperature | -40°C to +85°C |
| Storage Temperature | -65°C to +150°C |

5. Exceeding any one or combination of these limits may cause permanent damage to this device.
6. MACOM does not recommend sustained operation near these survivability limits.

Sample Board Header Pin Labels



Handling Procedures

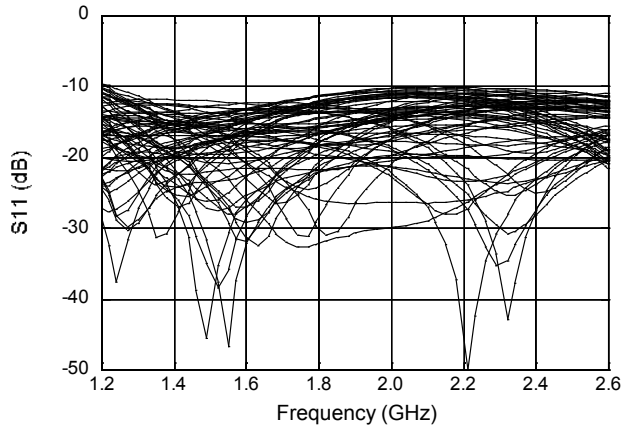
Please observe the following precautions to avoid damage:

Static Sensitivity

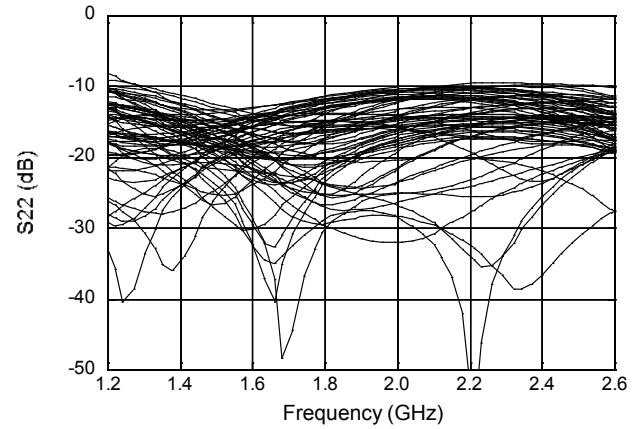
Gallium Arsenide and Silicon Integrated Circuits are sensitive to electrostatic discharge (ESD) and can be damaged by static electricity. Proper ESD control techniques should be used when handling these devices.

Typical Performance Curves

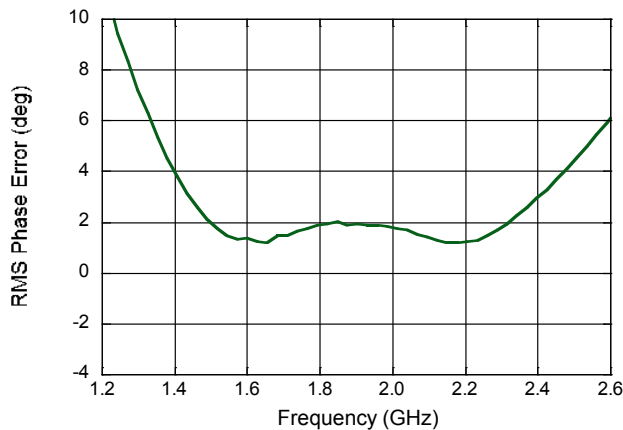
RF_{IN} Return Loss vs. Frequency (All States)



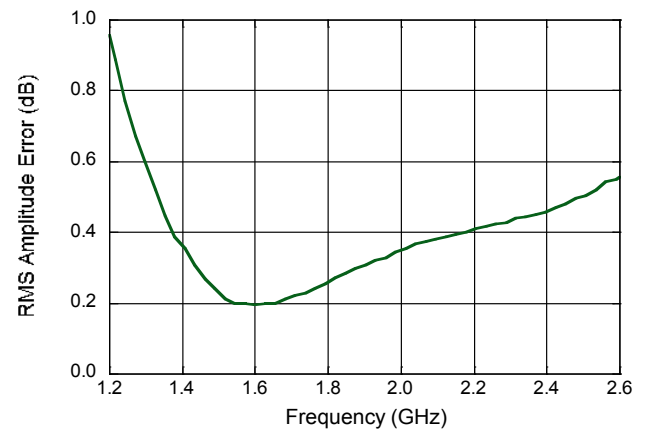
RF_{OUT} Return Loss vs. Frequency (All States)



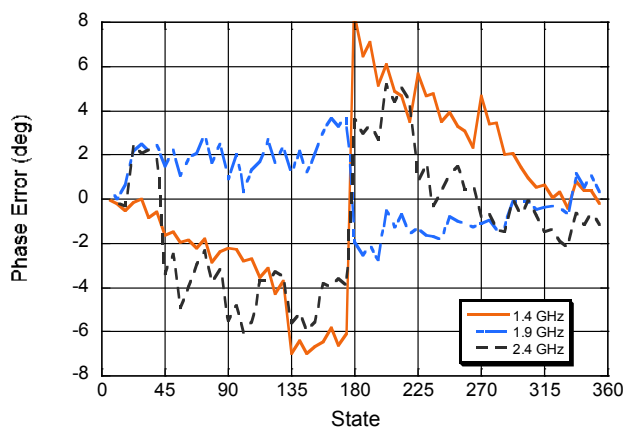
Mean RMS Phase Error vs. Frequency



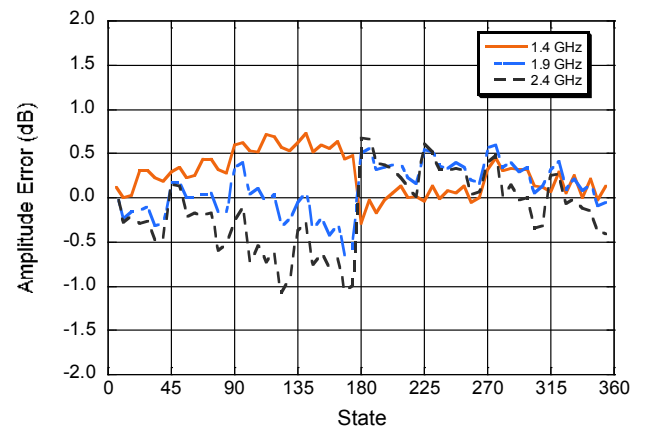
Mean RMS Amplitude Error vs. Frequency



Phase Error (degrees) vs. State

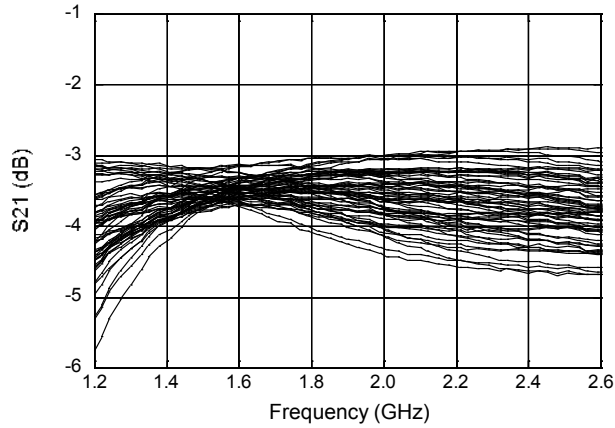


Amplitude Error (dB) vs. State

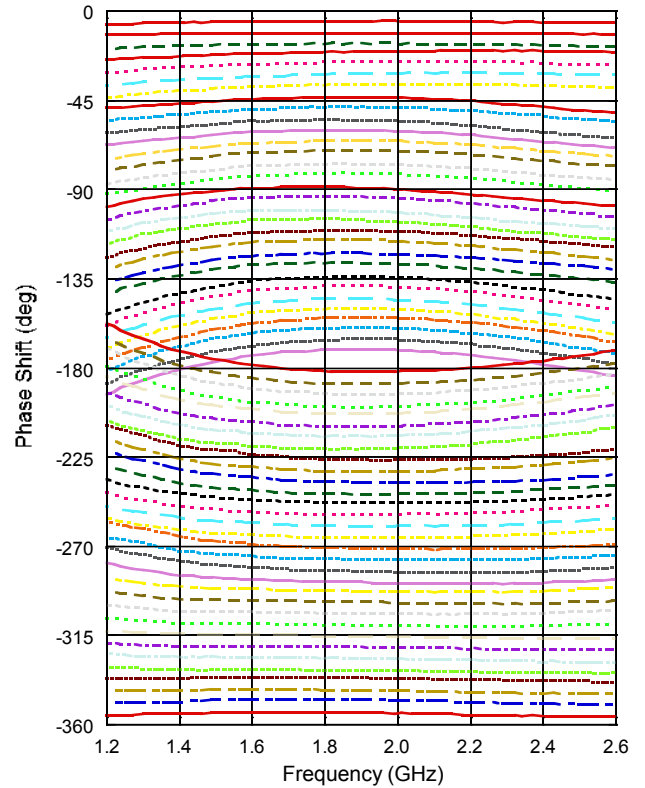


Typical Performance Curves

Amplitude Variation vs. Phase State



Phase Shift vs. Frequency (All States)



| | | | |
|--------|--------|--------|--------|
| 5.6° | 118.1° | 230.6° | 343.1° |
| 11.2° | 123.7° | 236.2° | 348.7° |
| 16.8° | 129.3° | 241.8° | 354.3° |
| 22.5° | 135° | 247.5° | |
| 28.1° | 140.6° | 253.1° | |
| 33.7° | 146.2° | 258.7° | |
| 39.3° | 151.8° | 264.3° | |
| 45° | 157.5° | 270° | |
| 50.6° | 163.1° | 275.6° | |
| 56.2° | 168.7° | 281.2° | |
| 61.8° | 174.3° | 286.8° | |
| 67.5° | 180° | 292.5° | |
| 73.1° | 185.6° | 298.1° | |
| 78.7° | 191.2° | 303.7° | |
| 84.3° | 196.8° | 309.3° | |
| 90° | 202.5° | 315° | |
| 95.6° | 208.1° | 320.6° | |
| 101.2° | 213.7° | 326.2° | |
| 106.8° | 219.3° | 331.8° | |
| 112.5° | 225° | 337.5° | |

Modes of Operation: Serial and Direct Parallel

Serial Mode

The serial control interface (SERIN, CLK, LE, SEROUT) is compatible with the SPI protocol. SPI mode is activated when P/S is kept high. The 6-bit serial word must be loaded with the MSB first. After shifting in the 6 bit word, a rising edge on LE will set the phase shifter to the desired state. While LE is high the CLK is masked to protect the data while implementing the change. SEROUT is SERIN delayed by 6 clock cycles.

When P/S is low, the serial control interface is disabled. When P/S is set high, Pins 22, 23, and 24 have the LE, CLK, and SER IN function.

In serial mode operation, the outputs will stay constant while LE is kept low.

Direct Parallel Mode

The parallel mode is enabled when P/S is set low. In the direct parallel mode, the phase shifter is controlled by the parallel control inputs directly. When P/S is set low, Pins 22, 23, and 24 have the D3, D2, and D1 function.

Mode Truth Table

| P/S | LE | Mode |
|-----|-----|-----------------|
| 1 | X | Serial |
| 0 | N/A | Direct Parallel |

Truth Table (Digital Phase Shifter)⁷

| D6 | D5 | D4 | D3 | D2 | D1 | Phase Shift |
|----|----|----|----|----|----|-----------------|
| 0 | 0 | 0 | 0 | 0 | 0 | Reference Phase |
| 0 | 0 | 0 | 0 | 0 | 1 | 5.6° |
| 0 | 0 | 0 | 0 | 1 | 0 | 11.2° |
| 0 | 0 | 0 | 1 | 0 | 0 | 22.5° |
| 0 | 0 | 1 | 0 | 0 | 0 | 45° |
| 0 | 1 | 0 | 0 | 0 | 0 | 90° |
| 1 | 0 | 0 | 0 | 0 | 0 | 180° |
| 1 | 1 | 1 | 1 | 1 | 1 | 354.4° |

7. 0 = CMOS Low; 1 = CMOS High, X is CMOS Low or High

Serial Interface Timing Characteristics

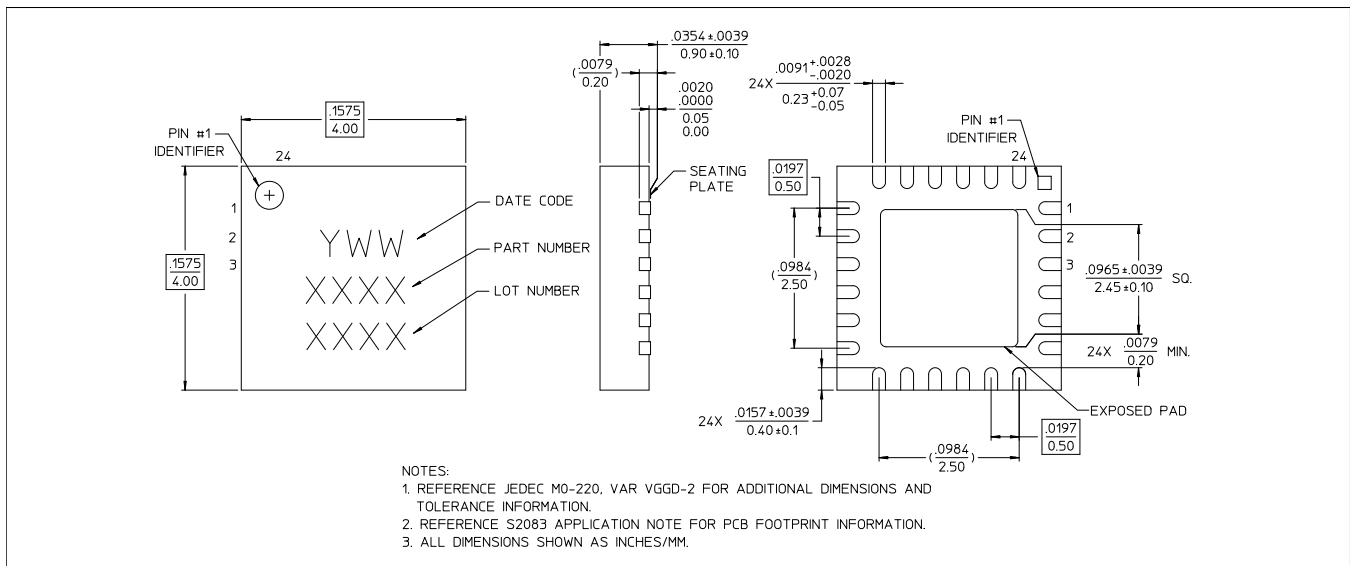
| Symbol | Parameter | Typical Performance | | | Units |
|------------------|-------------------------------------|---------------------|-------|-------|-------|
| | | -40°C | +25°C | +85°C | |
| t _{SCK} | Min. Serial Clock Period | 100 | 100 | 100 | ns |
| t _{CS} | Min. Control Set-up Time | 20 | 20 | 20 | ns |
| t _{CH} | Min. Control Hold Time | 20 | 20 | 20 | ns |
| t _{LS} | Min. LE Set-up Time | 10 | 10 | 10 | ns |
| t _{LEW} | Min. LE Pulse Width | 10 | 10 | 10 | ns |
| t _{LH} | Min. Serial Clock Hold Time from LE | 10 | 10 | 10 | ns |
| t _{LES} | Min. LE Pulse Spacing | 630 | 630 | 630 | ns |

Functionality Modes of Operation: Serial and Direct Parallel

Serial Input Interface Timing Diagram



Lead Free 4 mm 24-Lead PQFN †



† Reference Application Note S2083 for lead-free solder reflow recommendations.
Meets JEDEC moisture sensitivity level 1 requirements.
Plating is 100% matte tin over copper.

MACOM Technology Solutions Inc. All rights reserved.

Information in this document is provided in connection with MACOM Technology Solutions Inc ("MACOM") products. These materials are provided by MACOM as a service to its customers and may be used for informational purposes only. Except as provided in MACOM's Terms and Conditions of Sale for such products or in any separate agreement related to this document, MACOM assumes no liability whatsoever. MACOM assumes no responsibility for errors or omissions in these materials. MACOM may make changes to specifications and product descriptions at any time, without notice. MACOM makes no commitment to update the information and shall have no responsibility whatsoever for conflicts or incompatibilities arising from future changes to its specifications and product descriptions. No license, express or implied, by estoppel or otherwise, to any intellectual property rights is granted by this document.

THESE MATERIALS ARE PROVIDED "AS IS" WITHOUT WARRANTY OF ANY KIND, EITHER EXPRESS OR IMPLIED, RELATING TO SALE AND/OR USE OF MACOM PRODUCTS INCLUDING LIABILITY OR WARRANTIES RELATING TO FITNESS FOR A PARTICULAR PURPOSE, CONSEQUENTIAL OR INCIDENTAL DAMAGES, MERCHANTABILITY, OR INFRINGEMENT OF ANY PATENT, COPYRIGHT OR OTHER INTELLECTUAL PROPERTY RIGHT. MACOM FURTHER DOES NOT WARRANT THE ACCURACY OR COMPLETENESS OF THE INFORMATION, TEXT, GRAPHICS OR OTHER ITEMS CONTAINED WITHIN THESE MATERIALS. MACOM SHALL NOT BE LIABLE FOR ANY SPECIAL, INDIRECT, INCIDENTAL, OR CONSEQUENTIAL DAMAGES, INCLUDING WITHOUT LIMITATION, LOST REVENUES OR LOST PROFITS, WHICH MAY RESULT FROM THE USE OF THESE MATERIALS.

MACOM products are not intended for use in medical, lifesaving or life sustaining applications. MACOM customers using or selling MACOM products for use in such applications do so at their own risk and agree to fully indemnify MACOM for any damages resulting from such improper use or sale.