

C. Westby 12-6-91
 APPROVED/DATE
 REV 2

SAFETY ORGANIZATION(S)

THIS FILTER HAS BEEN FORMALLY RECOGNIZED, CERTIFIED OR APPROVED BY THE LISTED AGENCY. THEREFORE, ALL TEST/REQUIREMENTS SPECIFIED IN THE LATEST REVISION OF THE FOLLOWING AGENCY STANDARDS HAVE BEEN MET.

UL RECOGNIZED
 CSA CERTIFIED
 VDE APPROVED
 SEMKO APPROVED

OPERATING SPECIFICATIONS

LINE VOLTAGE/CURRENT,
 LINE FREQUENCY,
 MAX. LEAKAGE CURRENT, EACH
 LINE TO GROUND
 OPERATING AMBIENT TEMP. RANGE,
 IN AN AMBIENT, T_0 , HIGHER THAN 40°C, THE MAXIMUM OPERATING
 CURRENT, I_0 , IS AS FOLLOWS:

UL 1283
 CSA 22.2, NO. 0.0.4, 8
 VDE 565-3
 SEN 432901
 1 AMP., 120/250 VAC
 1 AMP./40°C, 250 VAC
 50-60Hz
 .20mA at 120V 60 Hz
 .33 mA at 250V 50 Hz
 -10°C TO +40°C @ RATED CURRENT, I_r
 $I_0 = I_r \sqrt{\frac{85-T_0}{45}}$
 -40°C TO +85°C
 21 DAYS @ 40°C 95% RH
 6 TIMES RATED CURRENT FOR 8 SECONDS

RELIABILITY SPECIFICATIONS

STORAGE TEMPERATURE,
 HUMIDITY,
 CURRENT OVERLOAD TEST,
 TEST SPECIFICATIONS

INDUCTANCE,
 CAPACITANCE, (MEASURED @ 1 KHZ, 0.25 VAC MAX., 25°C ±1°C)
 LINE TO GROUND,
 LINE TO LINE,
 DISCHARGE RESISTOR,
 LINE/GROUND AND LINE/LINE
 INSULATION RESISTANCE
 (W/O DISCHARGE RESISTOR)

RECOMMENDED RECEIVING INSPECTION HIPOIT.

LINES TO GROUND,
 LINE TO LINE,
 FILTER APPROVAL,
 THE BEST WAY TO SELECT AND QUALIFY A FILTER IS FOR YOUR ENGINEERING
 TO TEST THE UNIT IN YOUR EQUIPMENT.

TOLERANCE EXCEPT AS NOTED

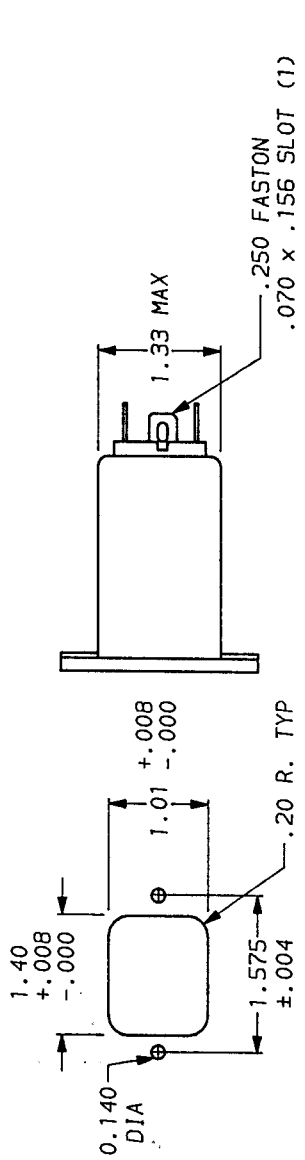
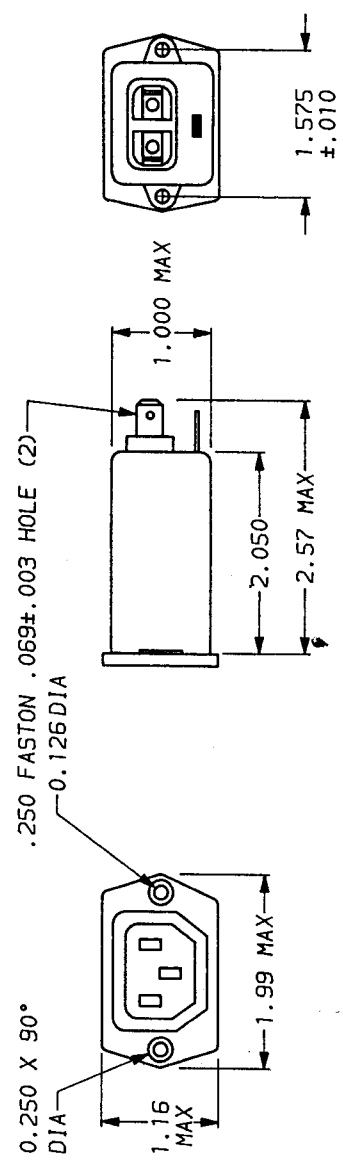
DECIMAL: .XXX .XX .X ANGLES
 ENGLISH: ±.020 .X ANGLES
 METRIC: ±

MATERIAL:

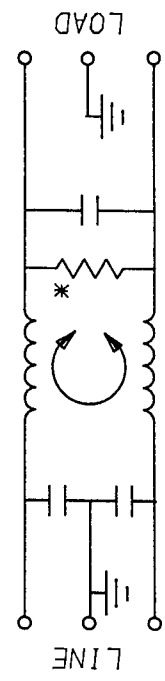
AS SUPPLIED

FINISH:

AS SUPPLIED



THIS FILTER LINE AND LOAD ARE REVERSED; THE SOCKET IS LOAD.



FREQUENCY MHz	50Ω - 50Ω (MINIMUM) INSERTION LOSS												
COMMON	.01	.05	.1	.15	.5	1	3	5	10	30			
DIFF.	12	23	29	32	41	47	47	47	47	40			
						1	3	14	23	41	47	50	44

This document is proprietary to CORCOM INC. and is not to be reproduced nor used for manufacturing purposes except on CORCOM's order or prior written consent.



ACCESSORY OUTLET FILTER

SCALE	DATE	DRG. NO.	REV.
NTS	11-5-90		1 EBF1.02
OR. BY	ORIGINATOR		
CFW	CFW		

Mouser Electronics

Authorized Distributor

Click to View Pricing, Inventory, Delivery & Lifecycle Information:

[TE Connectivity:](#)

[1EBF1](#)