

CM Series

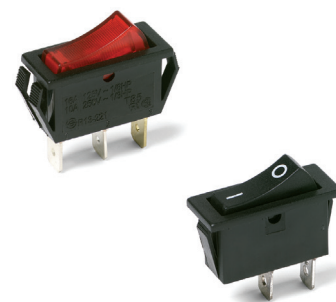
Single Pole Power Rocker Switches

Features/Benefits

- Illuminated versions available
- Easy to install snap-in design
- Multiple actuator and termination styles to choose from

Typical Applications

- Computers and peripherals
- Power supplies
- Industrial equipment
- Small appliances
- RoHS compliant



Specifications

CONTACT RATING:

16 AMPS @ 125 VAC, 1/8 HP;

10 AMPS @ 250 VAC, 1/3 HP.

ELECTRICAL LIFE: 10,000 make and break cycles at full load.

INSULATION RESISTANCE: $10^8 \Omega$ min.

DIELECTRIC STRENGTH: 1,500 VRMS @ sea level.

OPERATING TEMPERATURE: -20°C to +80°C

Materials

HOUSING AND ACTUATOR: 6/6 nylon (UL94V-2), black, gloss or matte finish.

ILLUMINATED ACTUATOR: Polycarbonate, gloss or matte finish.

CENTER CONTACTS: Silver plated, copper alloy.

END CONTACTS: Silver plated.

ALL TERMINALS: Silver plated, copper alloy.

NOTE: Specifications and materials listed above are for switches with standard options. For information on specific and custom switches, consult Customer Service Center.

Build-A-Switch

To order, simply select desired option from each category and place in the appropriate box. Available options are shown and described on pages G-95 through G-97. For additional options not shown in catalog, consult Customer Service Center.

<div>Switch Function</div> <div>CM101 SPDT On-None-On</div> <div>CM102 SPST On-None-Off</div> <div>CM103 SPDT On-Off-On</div> <div>CM107 SPDT On-Off-Mom.</div> <div>CM12 * SPST On-None-Off</div>	<div>Actuator</div> <div>J1 Rocker</div> <div>J3 Illuminated rocker</div>	<div>Actuator Color</div> <div>2 Black</div> <div>1 White</div> <div>3 Red</div> <div>R Red, illuminated</div> <div>A Amber, illuminated</div> <div>G Green, illuminated</div>	<div>Mounting Style/Color</div> <div>S2 Snap-in, black</div> <div>S4 Snap-in, black</div> <div>S1 Snap-in, white</div> <div>S3 Snap-in, white</div>	<div>Termination</div> <div>05 .250" quick connect</div> <div>07 Solder lug</div>	<div>Actuator Marking</div> <div>(NONE) No marking</div> <div>D ON-OFF</div> <div>H "O I" - international ON-OFF</div> <div>P "O -" international ON-OFF</div>	<div>Contact Rating</div> <div>QA Silver</div>	<div>Lamp Rating</div> <div>(NONE) No lamp</div> <div>7 125 VAC neon</div> <div>8 250 VAC neon</div>
---	---	--	---	---	--	---	---

* CM12 - for switches with both marking and illumination



16 May 18



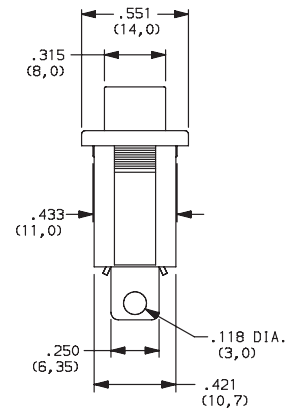
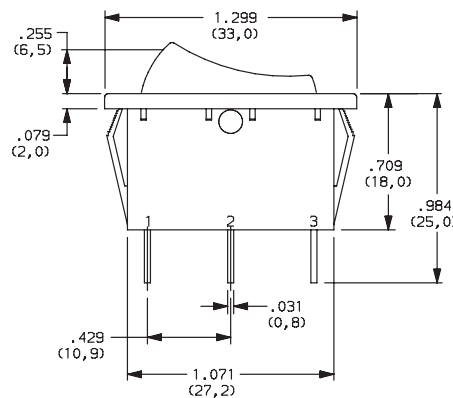
CM Series Single Pole Power Rocker Switches

SWITCH FUNCTION



NO. POLES	MODEL NO.	SWITCH FUNCTION			CONNECTED TERMINALS			SCHEMATIC
		Pos. 1	Pos. 2	Pos. 3	Pos. 1	Pos. 2	Pos. 3	
		C&K marking on opposite side			C&K marking on opposite side			
SP	CM101	ON	NONE	ON	2-1	N/A	2-3	
	CM102	ON	NONE	OFF			OPEN	
	CM103	ON	OFF	ON		OPEN	2-3	
	CM107	ON	OFF	MOM.				
	CM12 *	ON	NONE	OFF		N/A	OPEN	

* CM12 - for switches with both marking and illumination

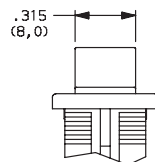
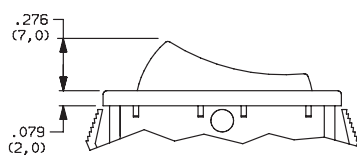


ACTUATOR



J1 ROCKER

J3 ILLUMINATED ROCKER



NOTE: J3 actuator available with CM102 & CM12 switch function only.



Third Angle
Projection

Dimensions are shown: Inches (mm)
Specifications and dimensions subject to change

C&K

16 May 18

G-92

www.ckswitches.com

Rocker

G

CM Series Single Pole Power Rocker Switches

ACTUATOR COLOR



OPTION CODE	ACTUATOR COLOR
2	BLACK
1	WHITE
3	RED
R	RED, ILLUMINATED
A	AMBER, ILLUMINATED
G	GREEN, ILLUMINATED

MOUNTING STYLE/COLOR

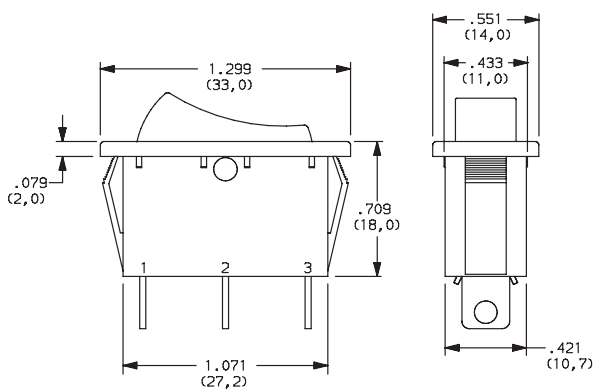


S2 SNAP-IN, BLACK

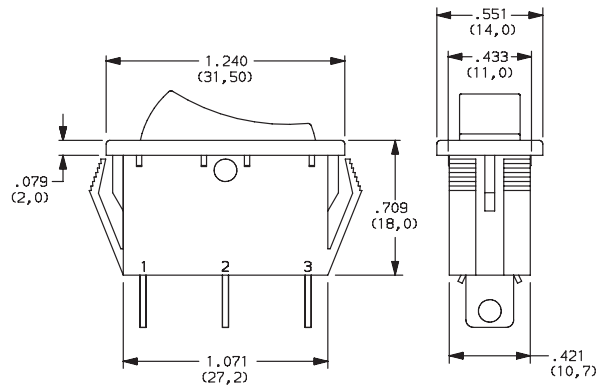
S1 SNAP-IN, WHITE

S4 SNAP-IN, BLACK (SHORT FRAME)

S3 SNAP-IN, WHITE

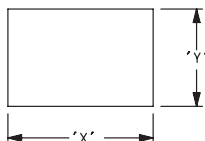


Shown in Pos. 1



Shown in Pos. 1

PANEL MOUNTING



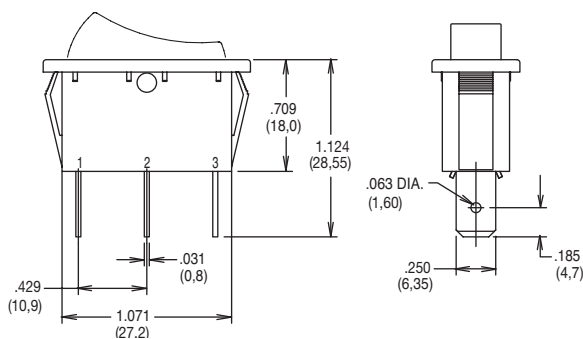
PANEL THICKNESS	"X"	"Y"
0.030-0.049 (0,75-1,25)	1.189-.004 (30,2-0,1)	0.441+.004 (11,2+0,1)
0.049-0.079 (1,25-2,0)	1.197-.004 (30,4-0,1)	0.441+.004 (11,2+0,1)
0.079-0.118 (2,0-3,0)	1.212-.004 (30,8-0,1)	0.441+.004 (11,2+0,1)

TERMINATION

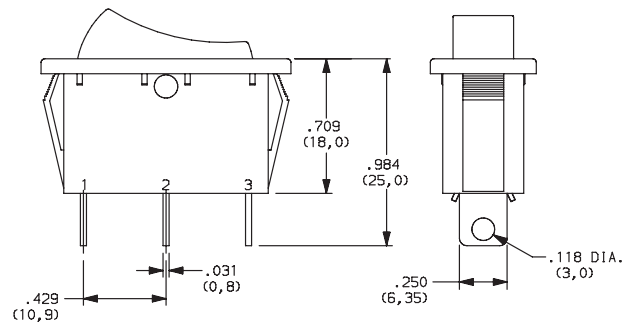


05 .250 QUICK CONNECT

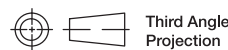
07 SOLDER LUG



Shown in Pos. 1



NOTE: Available with CM101 & CM102 switch functions only.



Dimensions are shown: Inches (mm)
Specifications and dimensions subject to change



16 May 18

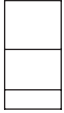


CM Series Single Pole Power Rocker Switches

ACTUATOR MARKING



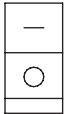
NONE NO MARKING



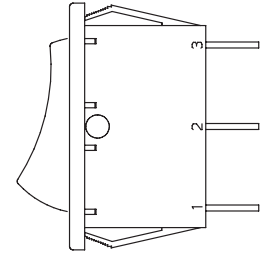
D ON-OFF



H O I



P O -



NOTE: Orientation of actuator marking and terminals.

Shown in Pos. 1

CONTACT MATERIAL



OPTION CODE	CONTACT AND TERMINAL MATERIAL	RATINGS	
		POWER	
QA	SILVER		16 AMPS @ 125 VAC; 1/8 HP 10 AMPS @ 250 VAC, 1/3 HP

* Note: See Technical Data section of this catalog for RoHS compliant and compatible definitions and specifications.



LAMP RATING



(NONE) NO LAMP

7 125 VAC 33kΩ NEON

8 250 VAC 150kΩ NEON

NOTE: Lamp rating for J3 & J8 actuator option.

Rocker



G

C&K

16 May 18

G-94



Dimensions are shown: Inches (mm)
Specifications and dimensions subject to change

www.ckswitches.com

Mouser Electronics

Authorized Distributor

Click to View Pricing, Inventory, Delivery & Lifecycle Information:

C&K Switches:

[CM101J12S207QA](#) [CM101J11S205QA](#) [CM101J12S205QA](#) [CM101J12S405QA](#) [CM101J11S105QA](#)
[CM101J62S205QA](#) [CM107J12S205QA](#) [CM103J12S205QA](#) [CM102J12S207QA](#) [CM102J12S205HQA](#)
[CM102J12S205QA](#) [CM102J62S205QA](#) [CM102J12S205DQA](#) [CM102J3RS205QA7](#) [CM102J11S205QA](#)
[CM102J12S205PQA](#) [CM102J3AS205QA7](#) [CM102J3AS205QA8](#) [CM102J3RS205QA8](#) [CM102J11S205PQA](#)
[CM102J12S405QA](#) [CM102J3GS205QA7](#) [CM102J3GS205QA8](#) [CM102J11S305HQA](#) [CM102J12S105PQA](#)
[CM102J12S405PQA](#) [CM102J13S205QA](#) [CM103J12S405PQA](#)