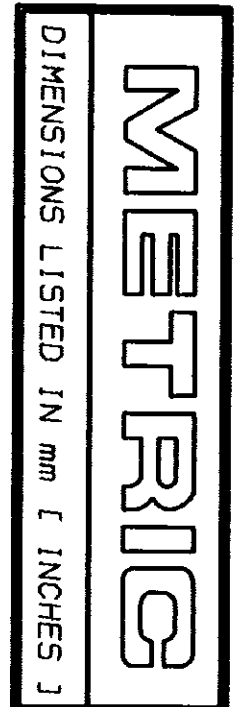
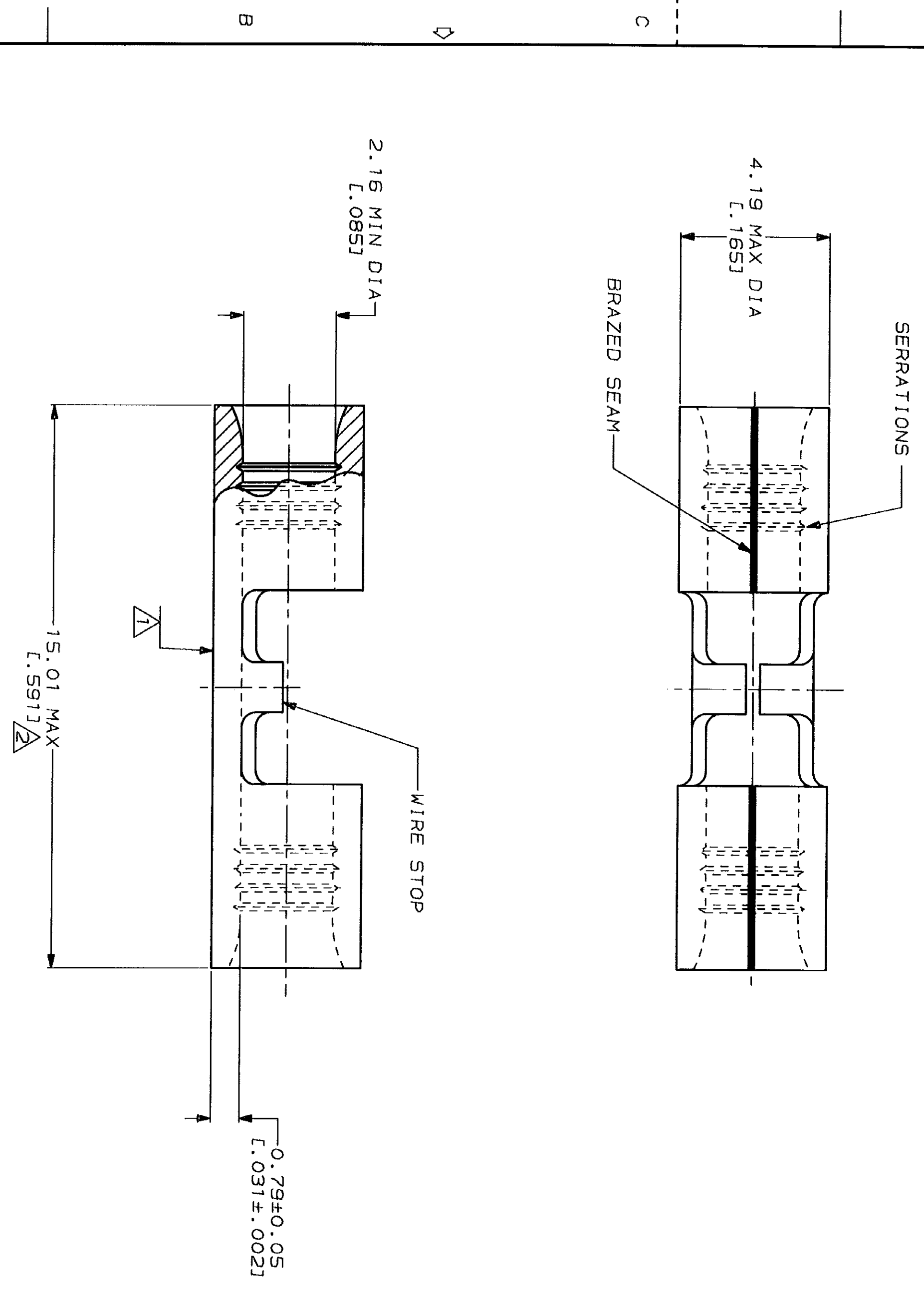


LOC	DIST	ZONE	LTR	REV & REDRAWN PER	DATE	APPROV
G	14	P	C	REV & REDRAWN PER 0720-0040-93	4-13-93	AMP



AMP WIRE RANGE	UL E13288 Listed
16-14 AWG SOLID OR STRANDED	16-14 AWG SOLID OR STRANDED
LR7189 Certified	MILITARY P/N AND CLASS
16-14 AWG SOLID OR STRANDED	NOT APPLICABLE

STAMP AMP 16-14* APPROX AS SHOWN
 MAXIMUM LENGTH DOES NOT INCLUDE
 MANUFACTURING TABS



AMP INCORPORATED CUSTOMER SERVICE SYSTEMS		MAX RECOMMENDED OPERATING TEMPERATURE: 170°C MAX
FOR ADDITIONAL PRODUCT INFORMATION OR COPIES OF DRAWINGS AND TECHNICAL DOCUMENTS	PRODUCT INFORMATION CENTER 1-800-522-6752	VOLTAGE RATING: NOT APPLICABLE
FOR APPLICATION TOOLING INFORMATION	TOOLING ASSISTANCE CENTER 1-800-722-1111	WIRE CROSS SECTIONAL AREA RANGE: 1.04-2.62mm ² [2,050-5,180] CIR MILS SOLID OR STRANDED
FOR ORDER ENTRY	1-800-526-5142	THIS DRAWING IS A CONTROLLED DOCUMENT FOR AMP INCORPORATED. IT IS SUBJECT TO CHANGE AND THE CONTROLLING ENGINEERING ORGANIZATION SHOULD BE CONTACTED FOR THE LATEST REVISION.

DO NOT SCALE PRINT. UNLESS SPECIFIED DIMENSIONS IN mm FINISHES— TOLERANCES ON: 2 PLC DEC # — 3 PLC DEC # — ANGLES	DR 4-13-93 TA BRINKMAN CHK 4-13-93 DA PATTERSON APPD 4-13-93 DE MILLER APPD 4-13-93 JL MECKLEY PRODUCT SPEC APPLICATION SPEC WEIGHT —	FINISH TIN PLATE 0.00254 [L.000100] MIN THK PER MIL-T-10727	NAME AMP AMP Incorporated Harrisburg, PA 17105-3608
MATERIAL COPPER PER ASTM B-152 ANNEALED			
		SIZE CAGE CODE 00779	DRAWING NO 322459
		SCALE 10:1	SHEET 1 OF 1

Mouser Electronics

Authorized Distributor

Click to View Pricing, Inventory, Delivery & Lifecycle Information:

[TE Connectivity:](#)

[322459](#)