



MODULAR JACKS AND PLUGS: GWLX Series

Right Angle Modular Jack with LED, Tab Up

Product Features

- Easy Viewing LEDs to Act as Power/Transmit Indicators
- Snap-In Retention Tabs
- Available Fully Shielded for EMI/RFI Protection
- Available Through Hole and Surface Mount
- CSA/NRTL Certified File No. LR78160
- UL File No. E134345

Performance Specifications

Materials and Finish

Housing

Housing Material

High Temperature Thermoplastic

Shield Material

Copper Alloy, Nickel Plated

Contact Material

Phosphor Bronze

Electrical Characteristics

Insulation Resistance

500 Megohms Min.

Contact Resistance

20 milliohms Max.

Current Rating

1.5A

Voltage Rating

125V DC

Operating Temperature

-40°C to +85°C

Durability Rating

500 Mating Cycles Min.

2D Drawing	IGES	STEP	3D PDF
Solder Profile	CofC RoHS Compliant	CofC REACH Compliant	UL Plastic File
Certificate of Origin	Check Stock	Request a Sample	Send Us An Email

Generated Part Number

Part Number Builder

<input type="text"/>	-	<input type="text"/>	<input type="text"/>	<input type="text"/>	<input type="text"/>
Series		Shield Option	No. of Positions & Contacts	LED Color Option	Plating Option

Series

GWLX - Modular Jack with LED, Through Hole

Shield Option

- N - Non-Shielded
- S - Fully Shielded
- S2 - Fully Shielded with Side Ground Tabs
- S9 - Shielded with Top & Side Tabs

Number of Positions/Contacts

88 - 8 Positions / 8 Contacts

LED Color

- G/G - Left: Green, Right: Green
- Y/Y - Left: Yellow, Right: Yellow
- Y/G - Left: Yellow, Right: Green
- G/Y - Left: Green, Right: Yellow
- G/R - Left: Green, Right: Red

Plating Option

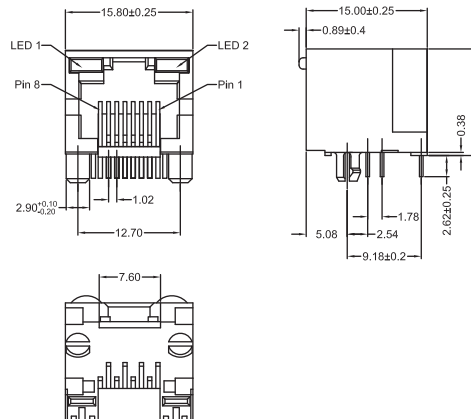
- Blank - Gold Flash
- 50 - 50µ" Gold Plating

Contact Kycon for Other Options

GWLX Series

Dimensions in mm

GWLX-N-88-x-x



Mouser Electronics

Authorized Distributor

Click to View Pricing, Inventory, Delivery & Lifecycle Information:

Kycon:

[GWLX-S9-88-Y/G-50](#) [GWLX-S-88-G/Y](#) [GWLX-SMT-S988G/Y](#) [GWLX-S2-88-G/Y](#) [GWLX-S9-88-G/Y](#) [GWLX-S9-88-G/G](#) [GWLX-S-88-Y/G](#) [GWLX-SMT-S988G/G](#) [GWLX-S9-88-Y/G](#) [GWLX-S9-88-G/G-50](#) [GWLX-S-88-G/Y-50](#) [GWLX-S9-88-G/R](#) [GWLX-S-88-G/G](#) [GWLX-S-88-G/R](#) [GWLX-S9-88-G/Y-50](#) [GWLX-SMT-S988G/G50](#) [GWLX-SMT-S988Y/G](#) [GWLX-SMT-S988Y/G50](#) [GWLX-SMT-S988G/R](#) [GWLX-S2-88-G/Y-30](#) [GWLX-S-88-G/Y-30](#) [GWLX-S9-88-G/G-30](#) [GWLX-SMT-S988YG/YG](#) [GWLX-S9-88-GY/GY](#) [GWLX-S9-88-G/Y-30](#) [GWLX-S9-88-G/Y-15](#) [GWLX-S-88-G/G-30](#)