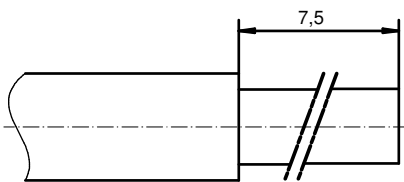


STRIPPING DIMENSION (b)



PLATING ITEM 1	PART-NO.
GOLD FLASH over NICKEL	132A10039X
30µm HARD GOLD over min. 50µm NICKEL	132C10039X

1	1	MATING SIDE	COPPER ALLOY	SEE TABLE
2	1	REAR SIDE	COPPER ALLOY	GOLD FLASH over NICKEL
3	1	RETAINING RING	COPPER ALLOY	NICKEL PLATED
pos	qty	description	material	plating

THIS DRAWING MAY NOT BE COPIED OR REPRODUCED IN ANY WAY, AND MAY NOT BE PASSED ON TO A THIRD PARTY WITHOUT WRITTEN PERMISSION. OWNERSHIP AND COPYRIGHT OF CONEC GmbH DO NOT ALTER CAD DRAWING BY HAND					tolerance	dim. in mm	scale:	5:1	
					date		name	material:	SEE NOTES
					drawn	31.03.16	Henneboel	title: HIGH POWER CONTACT FEMALE SOLDER CUP 30A FOR AWG 10-12 D-SUB COMBINATION	
					appd.	31.03.16	Schmidt		
					norm				
				d-old			dwg no:	13K11E5A	DIN-A3
				2 x b	Ä6066	31.03.2016	K.H.	sh: 1	
				a	Original				
				rev.	description	date	name	part no:	SEE TABLE

RoHS compliant



Mouser Electronics

Authorized Distributor

Click to View Pricing, Inventory, Delivery & Lifecycle Information:

[CONEC:](#)

[132C10039X](#)