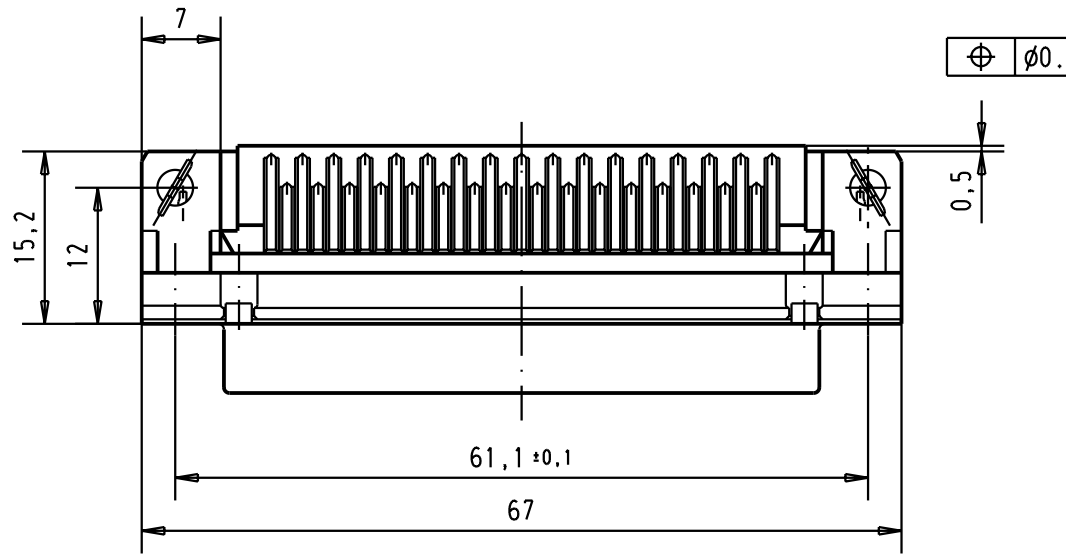
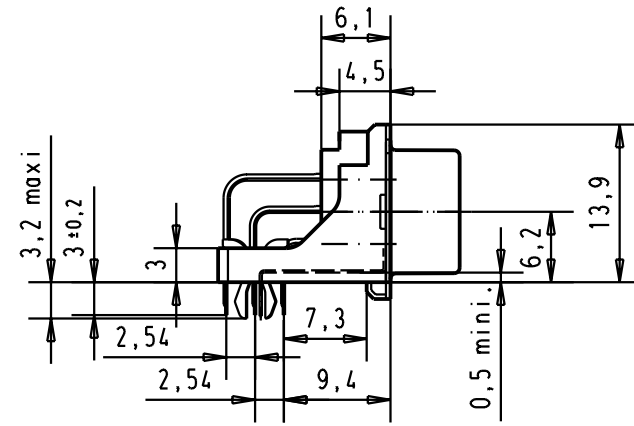
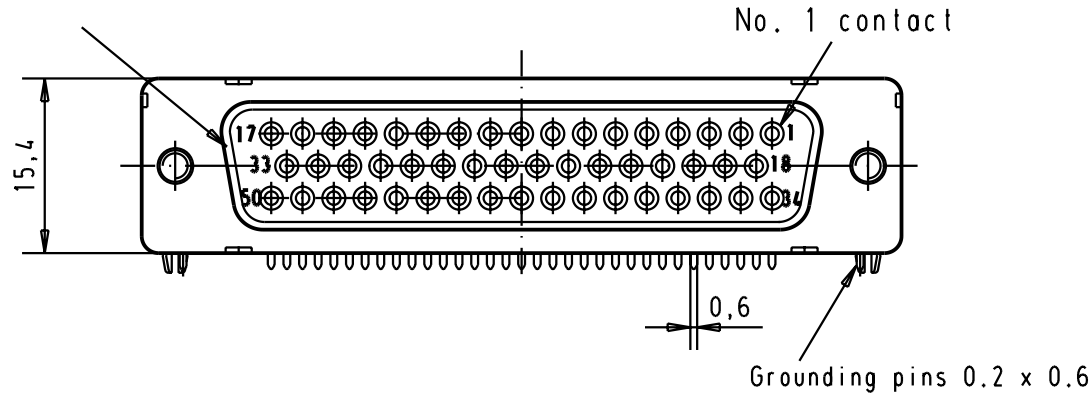
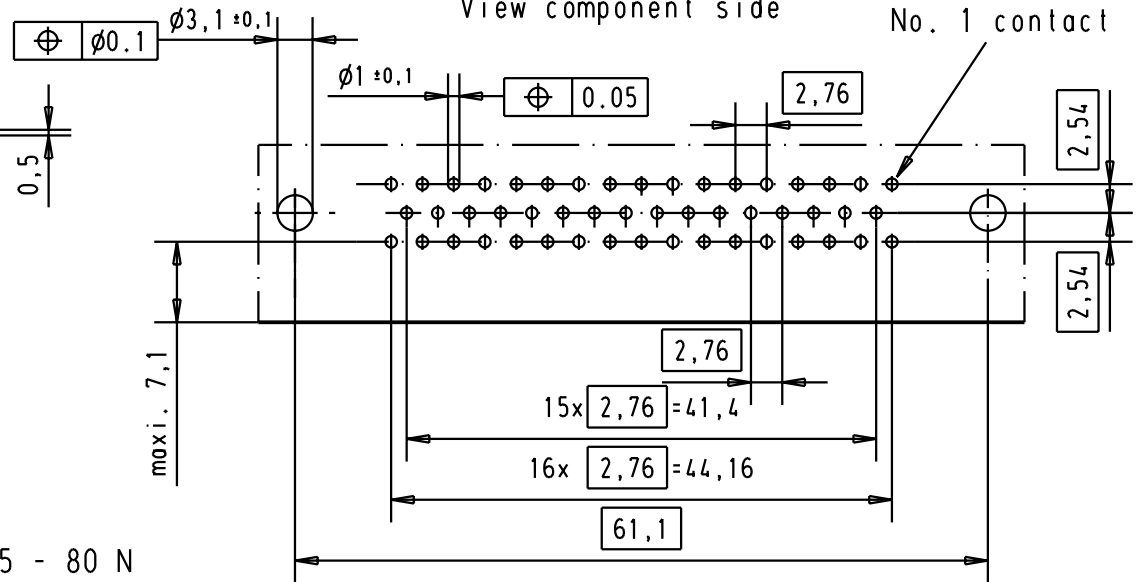


Mating face according to MIL-C-24308 / DIN 41 652 / CECC 75301-802



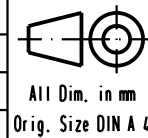
Mounting force on Printed board : 25 - 80 N

Printed board layout (1,6 ± 0,2 thick)  
View component side



09 66 552 6615	M3	2				
09 66 552 7615	M3	3				
09 66 552 5615	M3	0,76 µm Au				
09 66 552 6616	4-40 UNC	2				
09 66 552 7616	4-40 UNC	3	31084	04/SEP/02	YT	
09 66 552 5616	4-40 UNC	0,76 µm Au	29733	23-NOV-01	JB	
Part number	nut thread	Performance level	Mod.	Dat.	Name	

	Dat.	Name
Detail.	23-NOV-01	JB
Insp.		
Stand.		



D-Sub female low profile  
50 poles with solder pins,  
nuts, board lock and  
grounding pins

Moßstab/  
Scale  
1,5:1

HARTING EURL  
F-95972 Paris



TB 09 66 552 X61x

Blatt/ Page  
2

Sub.

# Mouser Electronics

Authorized Distributor

Click to View Pricing, Inventory, Delivery & Lifecycle Information:

[HARTING:](#)

[09665526616](#) [09665527615](#) [09665526615](#) [09665527616](#)