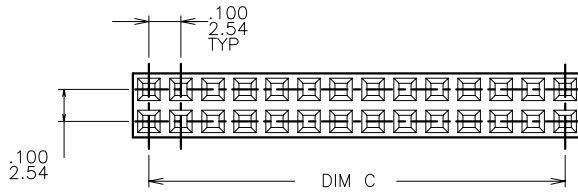
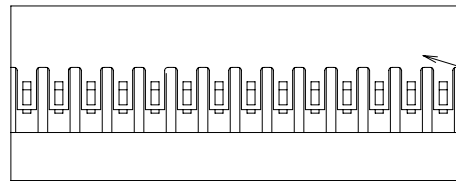
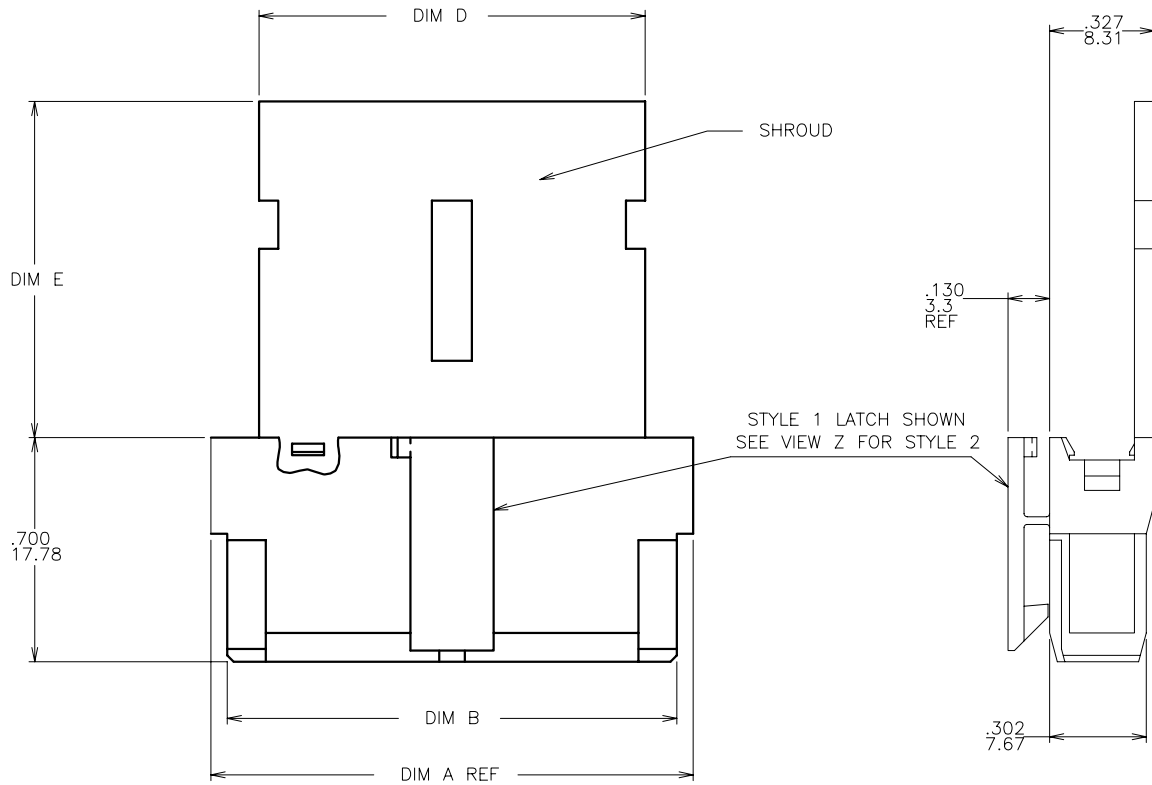


PRODUCT NO.  
SEE TABLE



mat'l. code				surface	tolerance	projection	product family
SEE NOTE 1				✓		⊕	PV HOUSINGS
ltr	ec'n no	dr	date	tolerances unless otherwise specified		INCH/MM	scale
B	V23818	JWB	1992-11-17	angles	linear		
C	V31288	PDP	1993-07-28				
D	V05-0716	TAB	2005-07-29	0° ± 2°			
E	V06-0421	HTB	2006-05-09	dr	M. CLOUSER	1991-01-29	
F	V07-0532	HTB	2007-08-16	engr	C. TREXLER	1991-01-29	
				chr	C. TREXLER	1991-01-29	
				appd	C. TREXLER	1991-01-29	
sheet	revision	F	F				
index	sheet	1	2				

title  
MINI LATCH SHROUD ASS'Y  
CABLE TIE STRAIN RELIEF

dwg no  
69150

sheet 1 of 2

size  
A3

type  
Product Customer Drawing



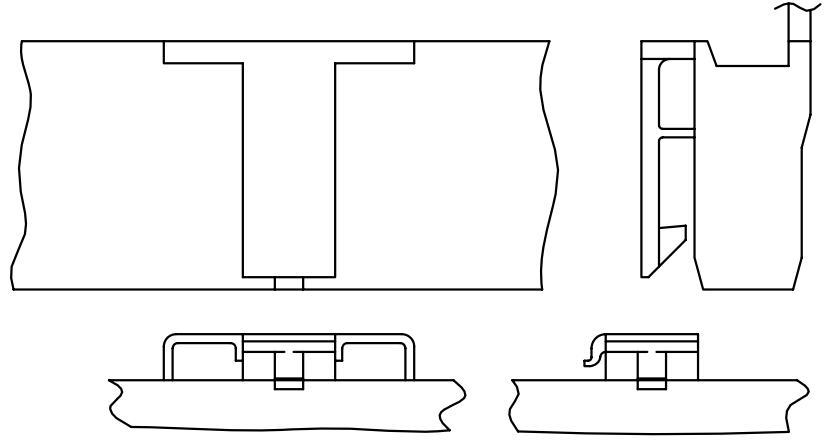
FCIconnect.com

Copyright FCI

PRODUCT NUMBER	DIM A	DIM B	DIM C	DIM D	DIM E	HOUSING POS REF	LATCH STYLE
69150-001			UNAVAILABLE				2
69150-002			UNAVAILABLE				
69150-003			UNAVAILABLE				
69150-004			UNAVAILABLE				
69150-005			UNAVAILABLE				
69150-006			UNAVAILABLE				
69150-007			UNAVAILABLE				
69150-008			UNAVAILABLE				
69150-009			UNAVAILABLE				
69150-010			UNAVAILABLE				
69150-011			UNAVAILABLE				1
69150-012LF	2.606/66.19	2.519/63.98	2.400/60.96	1.206/30.63	1.05/26.67	2 X 25	
69150-013			UNAVAILABLE				
69150-014			UNAVAILABLE				
69150-015LF	2.306/58.57	2.219/56.36	2.100/53.34	1.206/30.63	1.05/26.67	2 X 22	
69150-016			UNAVAILABLE				
69150-017			UNAVAILABLE				
69150-018			UNAVAILABLE				
69150-019			UNAVAILABLE				
69150-020LF	1.806/45.87	1.719/43.66	1.600/40.64	1.206/30.63	1.05/26.67	2 X 17	
69150-021			UNAVAILABLE				1
69150-022			UNAVAILABLE				
69150-023LF	1.506/38.25	1.419/36.04	1.300/33.02	1.206/30.63	1.05/26.67	2 X 14	
69150-024LF	1.406/35.71	1.319/33.50	1.200/30.48	1.206/30.63	1.05/26.67	2 X 13	
69150-025			UNAVAILABLE				
69150-026			UNAVAILABLE				
69150-027LF	1.106/28.09	1.019/25.88	.900/22.86	.506/12.85	.80/20.32	2 X 10	
69150-028			UNAVAILABLE				
69150-029			UNAVAILABLE				
69150-030LF	.806/20.47	.719/18.26	.600/15.24	.506/12.85	.80/20.32	2 X 7	
69150-031LF	.706/17.93	.619/15.72	.500/12.70	.506/12.85	.80/20.32	2 X 6	1
69150-032			UNAVAILABLE				
69150-033LF	.506/12.85	.419/10.64	.300/7.62	.506/12.85	.80/20.32	2 X 4	

NOTES:

1. MATERIAL: MODIFIED POLYPHENYLENE ETHER, FLAME RETARDANT PER UL-94V-0, COLOR: BLACK.
2. PRODUCT MEETS EUROPEAN UNION DIRECTIVES AND OTHER COUNTRY REGULATIONS AS DESCRIBED IN GS-22-008.
3. THIS PRODUCT IS NOT INTENDED TO BE EXPOSED TO MANUFACTURING SOLDER PROCESSES.
4. PRODUCT SPECIFICATION: BUS-12-067.



VIEW Z LATCH STYLE 2

STYLE 1

mat'l. code SEE NOTE 1				surface <input checked="" type="checkbox"/> tolerance		projection		product family PV HOUSINGS	
ltr	ecn no	dr	date	tolerances unless otherwise specified		INCH/MM		title	
F				angles	linear	XX+01/XX-3		MINI LATCH SHROUD ASS'Y CABLE TIE STRAIN RELIEF	
						XXX+005/XXX-13			
				0°±2°		XXXX+0020/XXX+051			
				dr	M. CLOUSER	1991-01-29	scale 5:1		FCI
				engr	C. TREXLER	1991-01-29	sheet 2 of 2		
				chr	C. TREXLER	1991-01-29	size A3		
				appd	C. TREXLER	1991-01-29	type Product Customer Drawing		
sheet index	revision sheet								

# Mouser Electronics

Authorized Distributor

Click to View Pricing, Inventory, Delivery & Lifecycle Information:

[FCI / Amphenol:](#)

[69150-015LF](#) [69150-024LF](#) [69150-027LF](#) [69150-020LF](#) [69150-023LF](#) [69150-030LF](#) [69150-031LF](#) [69150-012LF](#)  
[69150-033LF](#)