

MICRO SWITCH

FREEPORT ILLINOIS U S A
A DIVISION OF HONEYWELL

FED MFG CODE 91828

SWITCH - ENCLOSED

CATALOG LISTING
21EN37-6B

21EN37-6B

M

DRAWING
NUMBER

ISSUE
X 4

REPLACES
PR-12056

REVISIONS

A	0066712	TJO	DEC 89
B	CO 74101	DAW	10 FEB 93
C	CO 77048	SAD	18 MAY 94

14 APR 83

14 APR 83

14 APR 83

14 APR 83

14 APR 83

14 APR 83

14 APR 83

14 APR 83

14 APR 83

14 APR 83

14 APR 83

14 APR 83

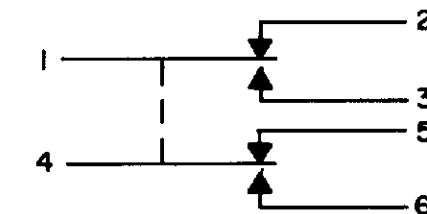
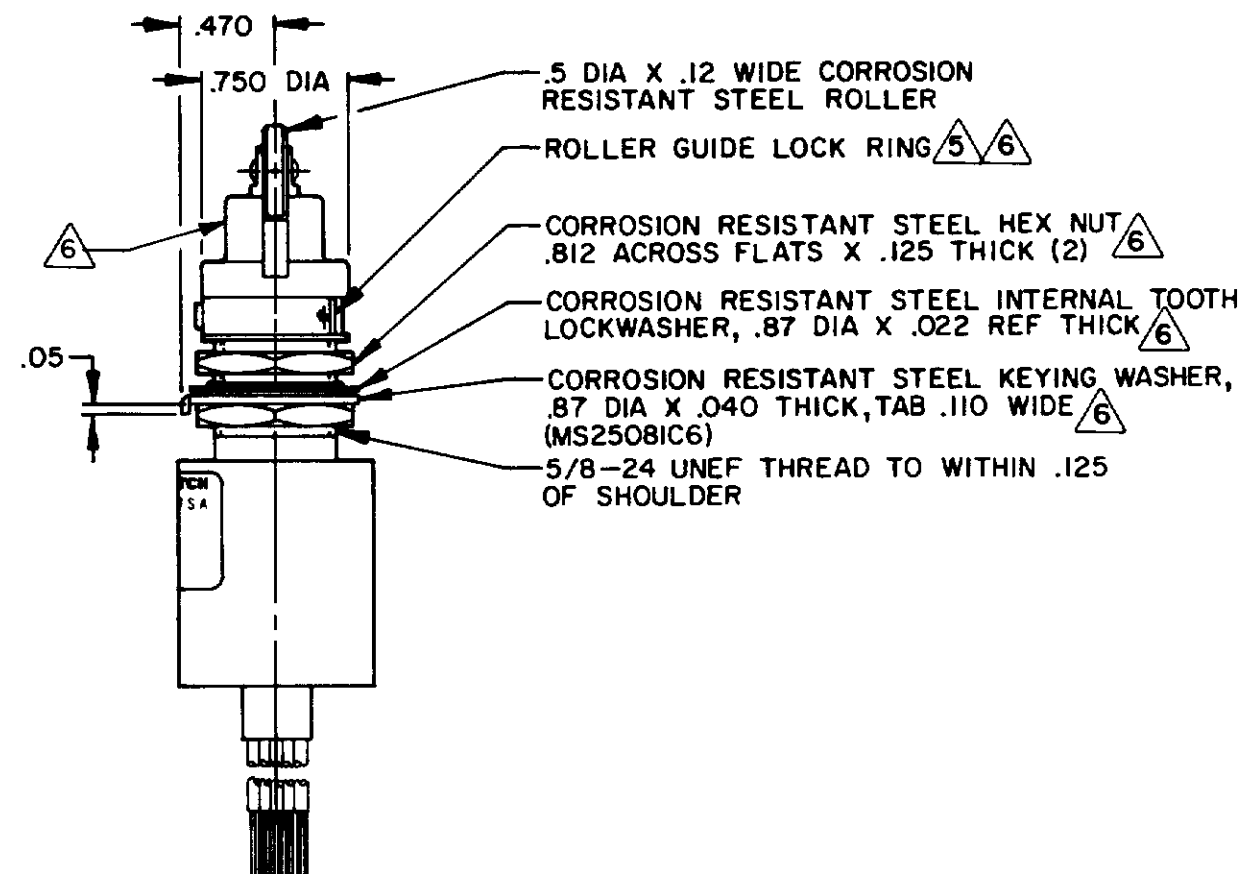
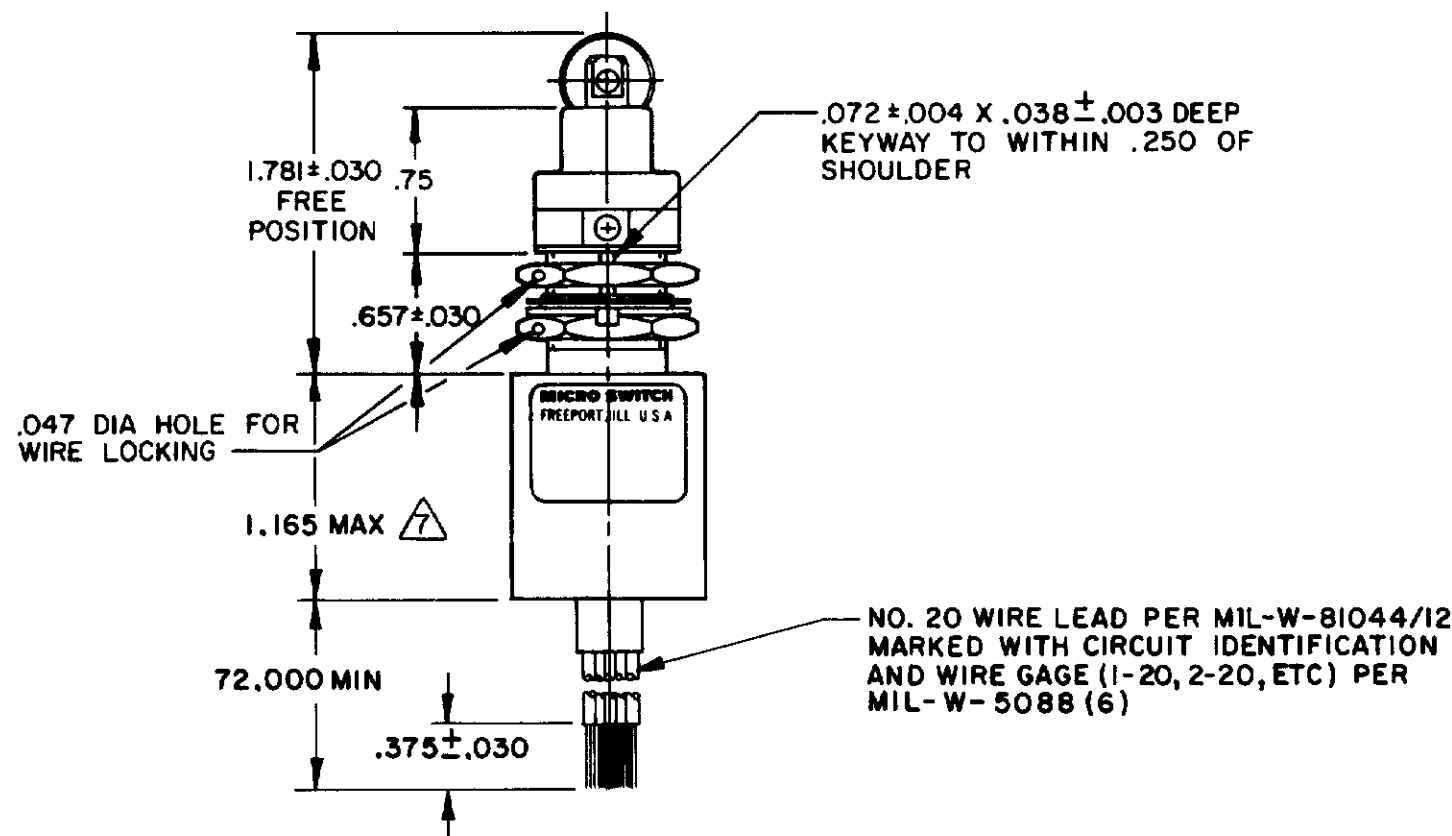
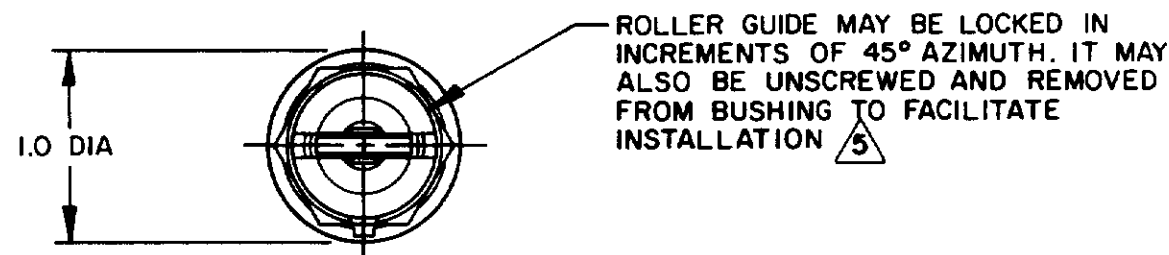
14 APR 83

14 APR 83

14 APR 83

14 APR 83

14 APR 83



CIRCUIT DIAGRAM

THIS DRAWING COVERS A PROPRIETARY ITEM AND IS THE PROPERTY OF MICRO SWITCH, A DIVISION OF HONEYWELL. THIS DRAWING IS NOT TO BE COPIED OR USED WITHOUT THE APPROVAL OF MICRO SWITCH

THIRD ANGLE PROJECTION

SCALE FULL

DO NOT SCALE PRINT

TOLERANCES
APPLY TO DESIGN UNITS. CONVERSIONS ARE ONLY FOR REFERENCE. UNLESS NOTED TOLERANCES ARE:

NO PLACES	ONE PLACE	TWO PLACES	THREE PLACES	ANGLES
	X	X	X	X
	0.4/0.10	0.16/0.005	0.16/0.005	0.16/0.005

DESIGN UNITS: SI METRIC, US CUSTOMARY

RAW MATERIAL - COMMERCIAL STANDARD
MICRO SWITCH STANDARDS APPLY
DIMENSIONS ARE TO BE MET BEFORE
PROTECTIVE COATINGS ARE APPLIED

WEIGHT 8.9 OZ MAX

CHARACTERISTICS	ELECTRICAL DATA
OPERATING FORCE — 6-12 LB	CONTACT ARRANGEMENT SPDT (2)
FULL OVERTRAVEL FORCE — 30 LB MAX	LOAD 28 VDC
RELEASE FORCE — 4 LB MIN	SEA LEVEL 50,000 FT.
PRETRAVEL — .040 MAX	RES 4
DIFFERENTIAL TRAVEL — .020 MAX	IND 2
OVERTRAVEL — .250 MIN	MOTOR 4
	LAMP

NOTES:

- CORROSION RESISTANT STEEL ENCLOSURE
 - SWITCH SEALED PER MIL-S-8805 SYMBOL 4
 - CIRCUIT DIAGRAM AND CATALOG LISTING ARE SHOWN ON NAMEPLATE
 - COINCIDENCE OF OPERATING AND RELEASING POINTS: .010 OF PLUNGER TRAVEL
- TO ADJUST ROLLER DIRECTION, REMOVE ROLLER GUIDE LOCK RING, SCREW ROLLER GUIDE DOWN AS FAR AS POSSIBLE, THEN UNSCREW TO DESIRED DIRECTION. SECURE BY REPLACING ROLLER GUIDE LOCK RING
- HARDWARE MAY BE PACKAGED UNASSEMBLED PER MIL-S-8805
- THIS DIMENSION EXCLUDES THE RESILIENT POTTING MATERIAL ON THE BOTTOM OF SWITCH

Mouser Electronics

Authorized Distributor

Click to View Pricing, Inventory, Delivery & Lifecycle Information:

[Honeywell:](#)

[21EN37-6B](#)