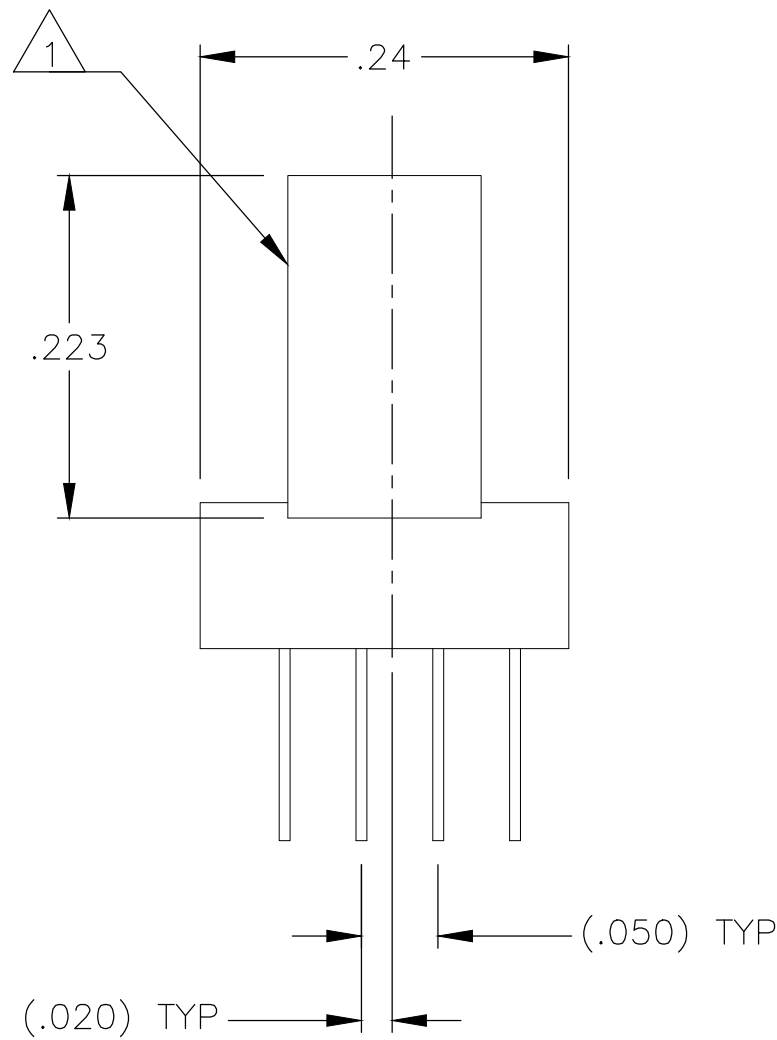
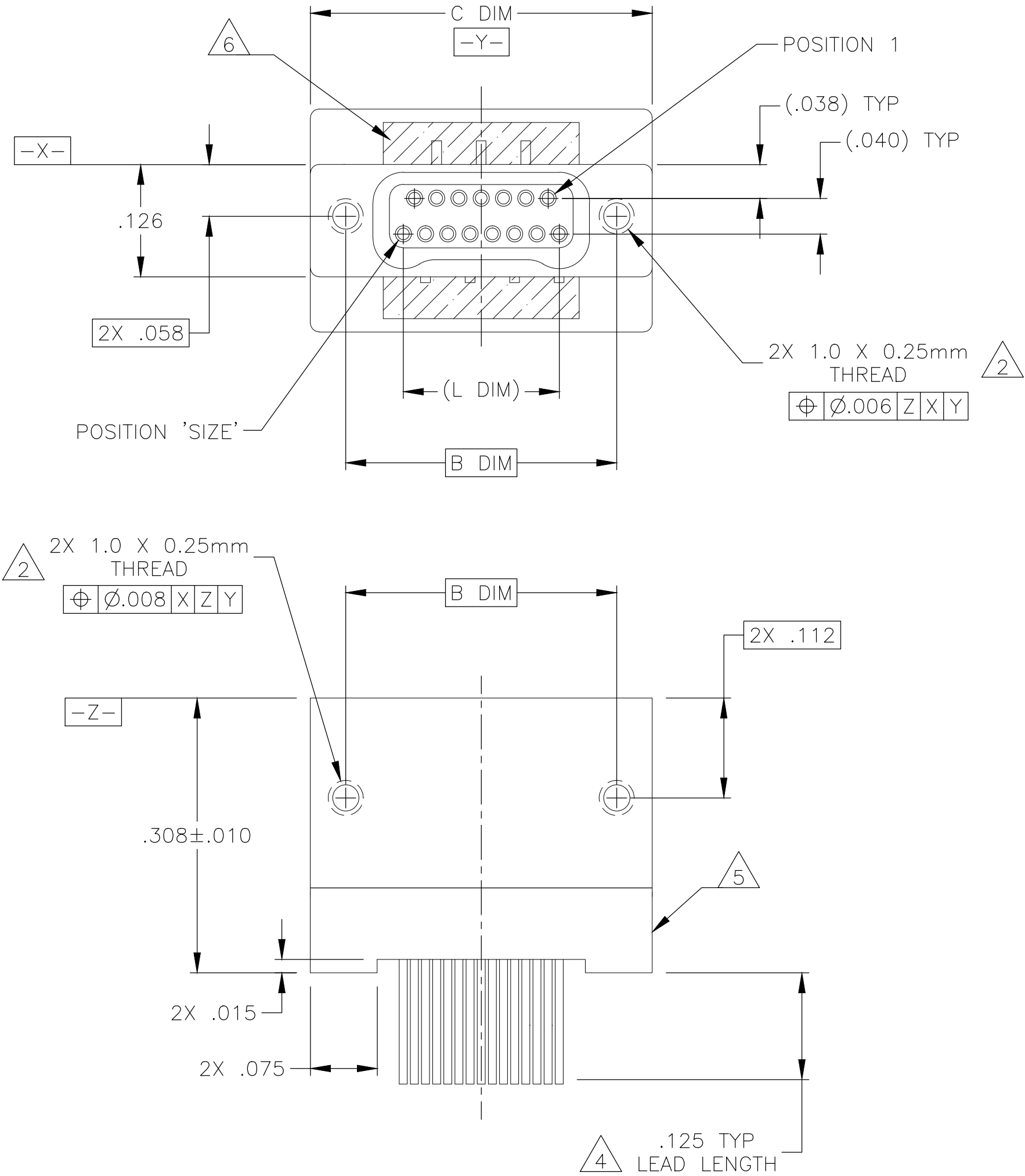


REVISIONS					
P	LTR	DESCRIPTION	DATE	DWN	APVD
	D2	REV PER ECO 17-009333	3 DEC 12	CT	RL

SIZE	B DIM	C DIM ±.0050	(L DIM)
09	.229	.3085	(.100)
15	.304	.3835	(.175)
25	.429	.5085	(.300)
37	.579	.6585	(.450)
51	.754	.8335	(.625)
65	.929	1.0085	(.800)



1. SHELL OPTIONS (TO BE SPECIFIED IN NANONICS PART NUMBER):  
METAL: 6061-T6 ALUMINUM, ELECTROLESS NICKEL PLATED PER SAE-AMS-C-26074 OR SAE-AMS-2404 (STANDARD) OR GOLD PLATED PER ASTM B488  
303 STAINLESS STEEL, PASSIVATED PER SAE-AMS-2700  
INSULATOR MATERIAL FOR ALL METAL SHELLS IS LIQUID CRYSTAL POLYMER (LCP) PER MIL-M-24519 OR PER ASTM D5138  
PLASTIC: LIQUID CRYSTAL POLYMER (LCP) PER MIL-M-24519 OR PER ASTM D5138
2. STANDARD 1.0 X 0.25mm MOUNTING AND JACKSCREW THREADS ARE SHOWN FOR REFERENCE ONLY AND MUST BE SPECIFIED IN THE NANONICS PART NUMBER WHEN REQUIRED. 1.2 X 0.25mm THREADS ALSO AVAILABLE.
3. MOUNTING HARDWARE IS AVAILABLE WITH THIS CONFIGURATION (NOT SHOWN). HARDWARE MUST BE SPECIFIED IN THE NANONICS PART NUMBER. CONSULT TYCO ELECTRONICS FOR DETAILS
4. LEAD MATERIAL: HH BRASS, TIN LEAD PLATED 60/40 COMPOSITION PER SAE-AMS-P-81728
5. LEAD ORGANIZER MATERIAL IS LIQUID CRYSTAL POLYMER PER ASTM D5138
6. THROUGH HOLE LEADS ARE EPOXY ENCAPSULATED WITHIN THE LEAD ORGANIZER
7. NANONICS TERMINATION CODE: M5 WITH SPECIAL CODE 11816 OR TERMINATION CODE M51
8. PREVIOUSLY IDENTIFIED AS NANONICS: N10138/255

THIS DRAWING IS A CONTROLLED DOCUMENT.

DIMENSIONS:  
INCHES

MATERIAL  
SEE NOTES

0 PLC ± -  
1 PLC ± -  
2 PLC ± .010  
3 PLC ± .005  
4 PLC ± -  
ANGLES ± 1°

FINISH  
SEE NOTES

DWN  
C. SCHOLL  
04-09-02

CHK  
M. STORRY  
04-16-02

APVD  
D. MORALES  
03-30-04

PRODUCT SPEC  
—

APPLICATION SPEC  
—

WEIGHT  
0

CUSTOMER DRAWING

TE Connectivity

NAME  
RCPT ASSEMBLY,VERTICAL MOUNT,  
THROUGH HOLE, 2 TO 4 ROW, .050 SPACING,  
—

SIZE  
A2

CAGE CODE  
OJPN9

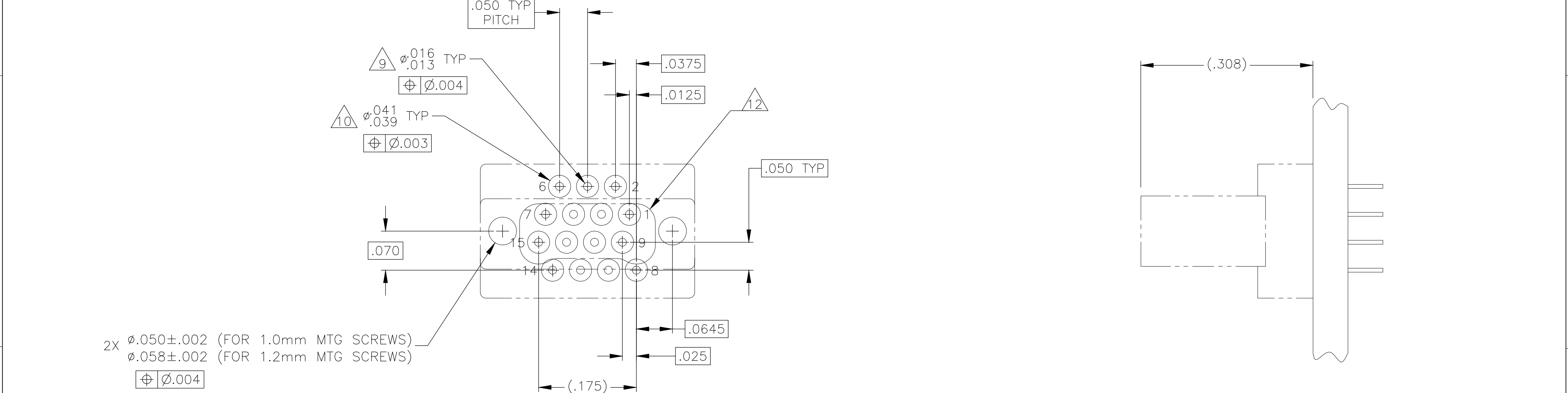
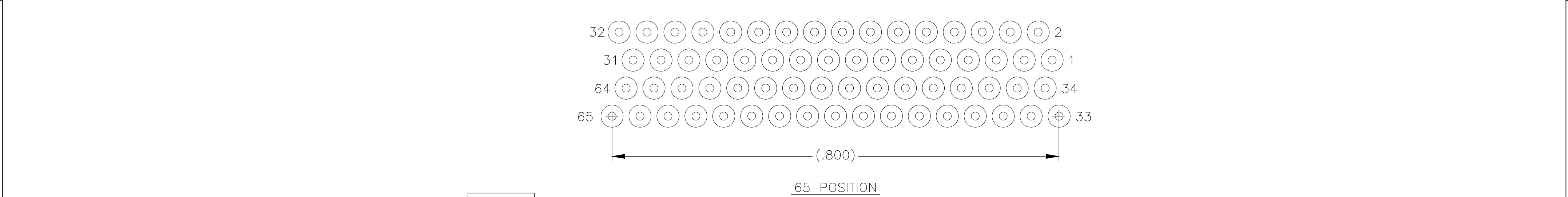
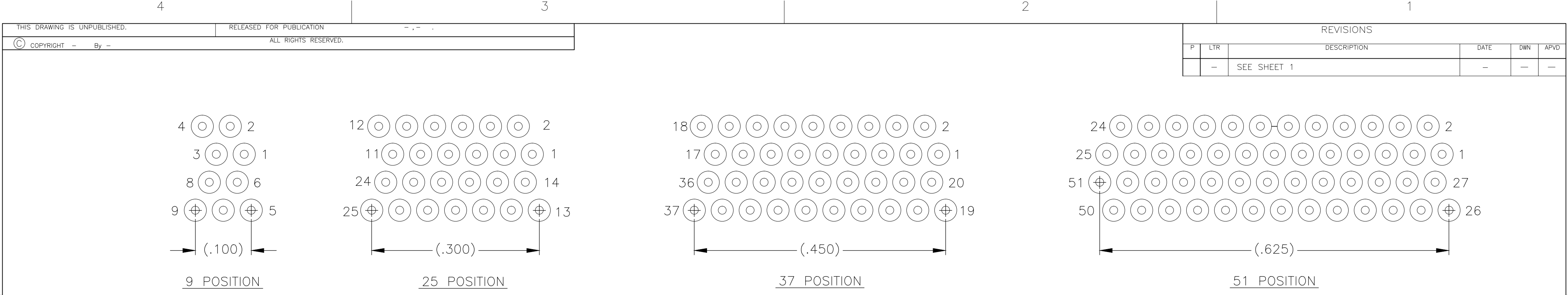
DRAWING NO  
C=1589743

RESTRICTED TO  
—

SCALE  
8:1

SHEET  
1 OF 2

REV  
D2



TYPICAL PCB LAYOUT  $\triangle 8$   
SIZE 15 SHOWN FOR REFERENCE

$\triangle 8$ . POSITIONAL TOLERANCES FOR BASIC DIMENSIONED FEATURES ARE RELATIVE TO FIDUCIALS OR SOME SIMILAR DATUM REFERENCES DEFINED BY PCB DESIGNER.  
 $\triangle 9$ . PLATED THROUGH HOLES  
 $\triangle 10$ . SOLDER PADS  
11. ALL THROUGH HOLE LAYOUTS ARE AS VIEWED FROM TOP OF PCB.  
 $\triangle 12$ . CONNECTOR ORIENTATION

THIS DRAWING IS A CONTROLLED DOCUMENT.		DWN C. SCHOLL 04-09-02	TE Connectivity		
DIMENSIONS: INCHES		CHK M. STORRY 04-16-02			
		APVD D. MORALES 03-30-04		NAME	
		PRODUCT SPEC		RCPT ASSEMBLY, VERTICAL MOUNT, THROUGH HOLE, 2 TO 4 ROW, .050 SPACING,	
MATERIAL SEE NOTES		FINISH SEE NOTES		SIZE A2	
		WEIGHT -		CAGE CODE 0JPN9	
		CUSTOMER DRAWING		SCALE 8:1	SHEET 2 OF 2
				REV D2	

# Mouser Electronics

Authorized Distributor

Click to View Pricing, Inventory, Delivery & Lifecycle Information:

[TE Connectivity:](#)

[1589743-9](#)