



Copyright FCI

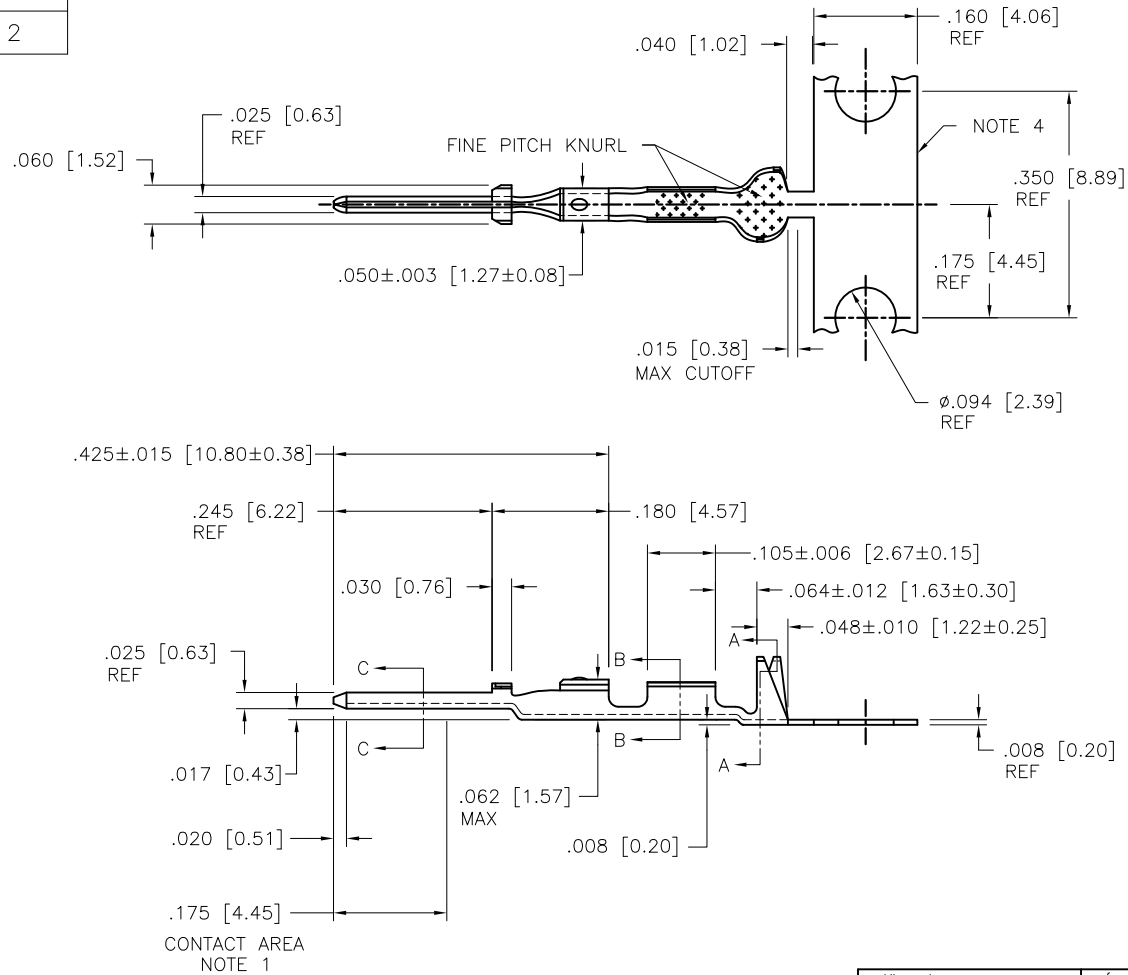





FCIconnect.com



PRODUCT NUMBER

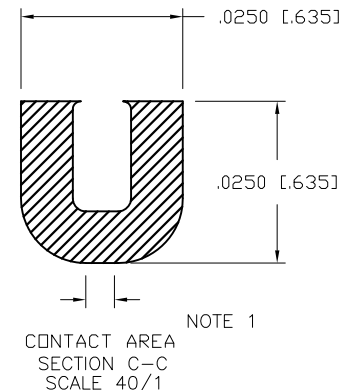
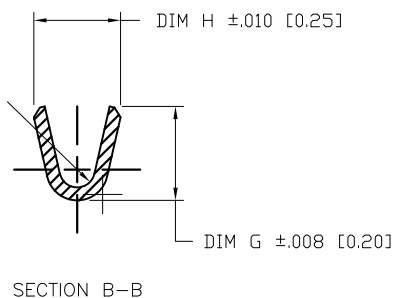
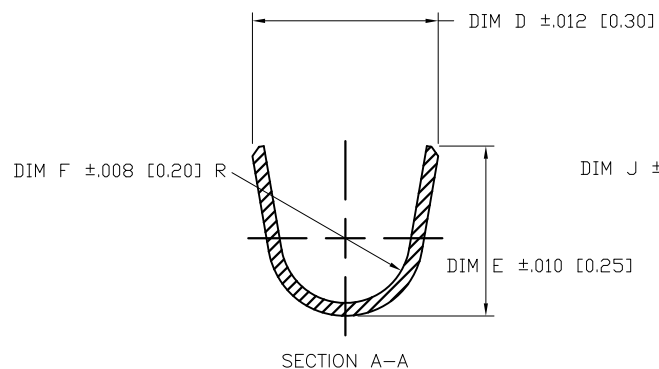
SEE SHEET 2



mat'l. code				surface		tolerance	projection	product family			
SEE TABLE						<input checked="" type="checkbox"/>		PV TERMINALS			
ltr	ecn no	dr	date	tolerances unless otherwise specified				title			
H	V09-0453	HTB	2009-10-15	angles	note	XX*.01/XX*.3		DUPLX CTW MALE PIN			
-	-	-	XXX*.005/XX*.13								
C	V41706	SAR	1994-12-13			0°±2'					XXXX*.0020/XXX*.051
D	V04-1158	TAB	2004-12-06	dr	M. CLOUSER	1994-08-22	scale 4:1				
E	V05-0281	HTB	2005-04-14	engr	T. HANNA	1994-08-22		dwg no		sheet 1 of 3	size
F	V06-0624	HTB	2006-06-30	chr	T. HANNA	1994-08-22		76808		A4	
G	V08-0114	HTB	2008-04-01	appd	T. HANNA	1994-08-22		type		CUSTOMER Drawing	
sheet index	revision sheet	H	H	H							
		1	2	3							


form: A4mmXLC

PRODUCT NUMBER		LOOSE PIECE PRODUCT NUMBER	AWG	PLATING	DIM D	DIM E	DIM F	DIM G	DIM H	DIM J
REELED FOR APPLICATION MACHINES FEEDING										
RIGHT – LEFT	LEFT – RIGHT									
76808–001	76808–004	76808–007	O B S O L E T E							
76808–001LF	76808–004LF	76808–007LF	28–32	NOTE 7	.115 [2.92]	.105 [2.67]	.040 [1.02]	.058 [1.47]	.054 [1.37]	.011 [0.28]
76808–002	76808–005	76808–008	O B S O L E T E							
76808–002LF	76808–005LF	76808–008LF (OBS)	22–26	NOTE 7	.139 [3.53]	.120 [3.05]	.050 [1.27]	.065 [1.65]	.070 [1.78]	.017 [0.43]
76808–003	76808–006	76808–009	O B S O L E T E							
76808–003LF	76808–006LF	76808–009LF	18–20	NOTE 7	.139 [3.53]	.120 [3.05]	.050 [1.27]	.083 [2.11]	.104 [2.64]	.021 [0.53]



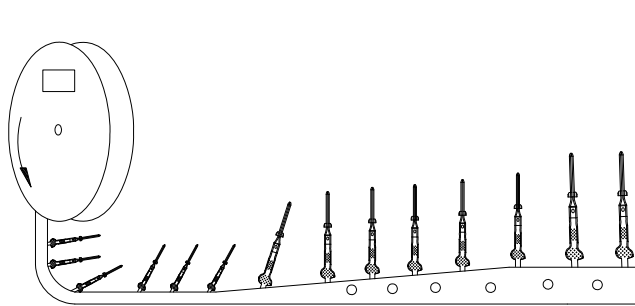
NOTES:

- ① PLATING: 50u"/1.27u MIN. Ni UNDERPLATE OVER ENTIRE TERMINAL. OVERPLATE 30u"/0.76 MIN. Au IN CONTACT AREA. 50u"/1.27u MIN. TIN-LEAD IN CRIMPING AREA.
2. TERMINAL MAY BE USED WITH MINI LATCH HOUSING.
3. APPLICABLE SPECIFICATION:
A. BUS-12-098 PRODUCT SPECIFICATION.
B. TA-211 CRIMP SPECIFICATION.
- ④. FOR MANUFACTURING PURPOSES ONLY.
- ⑤. PRODUCT MEETS EUROPEAN UNION DIRECTIVES AND OTHER COUNTRY REGULATIONS AS DESCRIBED IN GS-22-008.
6. THIS PRODUCT IS NOT INTENDED TO BE EXPOSED TO MANUFACTURING SOLDERING PROCESSES.
- ⑦. PLATING: 50u"/1.27u MIN. Ni UNDERPLATE OVER ENTIRE TERMINAL. OVERPLATE 30u"/0.76 MIN. Au IN CONTACT AREA. 50u"/1.27u MIN. TIN IN CRIMPING AREA.

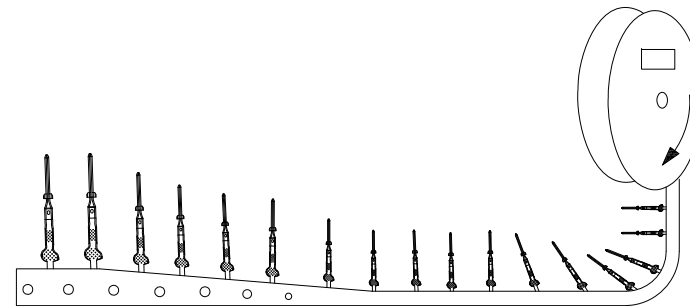
mat'l. code				surface	tolerance	projection	product family	
SEE TABLE							PV TERMINALS	
ltr	ecm no	dr	date	tolerances unless otherwise specified		INCH/MM	title	
H				angles	XX*.01/X*.3 XXX*.005/XX*.13		DUPLX CTW MALE PIN	
				0°±2°	XXXX*.0020/XXX*.051	scale 10:1	dwg no	sheet 2 of 3 size
				dr	M. CLOUSER 1994-08-22		76808	A4
				engr	T. HANNA 1994-08-22			
				chr	T. HANNA 1994-08-22			
				appd	T. HANNA 1994-08-22			
sheet index	revision sheet						type CUSTOMER Drawing	

PRODUCT NUMBER

SEE SHEET 2



Unreeling Direction
Left to Right Into
Applicator



Unreeling Direction
Right to Left Into
Applicator

mat'l. code SEE TABLE				surface	tolerance	projection	product family PV TERMINALS		
ltr	ecrn no	dr	date	tolerances unless otherwise specified			title DUPLEX CTW MALE PIN		
H				angles	$.XX \pm .01 / X \pm .3$ $XXX \pm .005 / XX \pm .13$				
				0" \pm .2"	$XXXX \pm .0020 / XXX \pm .051$				
				dr	M. CLOUSER	1994-08-22			
				engr	T. HANNA	1994-08-22			
				chr	T. HANNA	1994-08-22			
				appd	T. HANNA	1994-08-22			
sheet index	revision sheet						dwg no 76808		
							sheet 3 of 3		
							size A4		
							type CUSTOMER Drawing		

Mouser Electronics

Authorized Distributor

Click to View Pricing, Inventory, Delivery & Lifecycle Information:

[FCI / Amphenol:](#)

[76808-004LF](#) [76808-005LF](#) [76808-009LF](#) [76808-007LF](#) [76808-006LF](#)