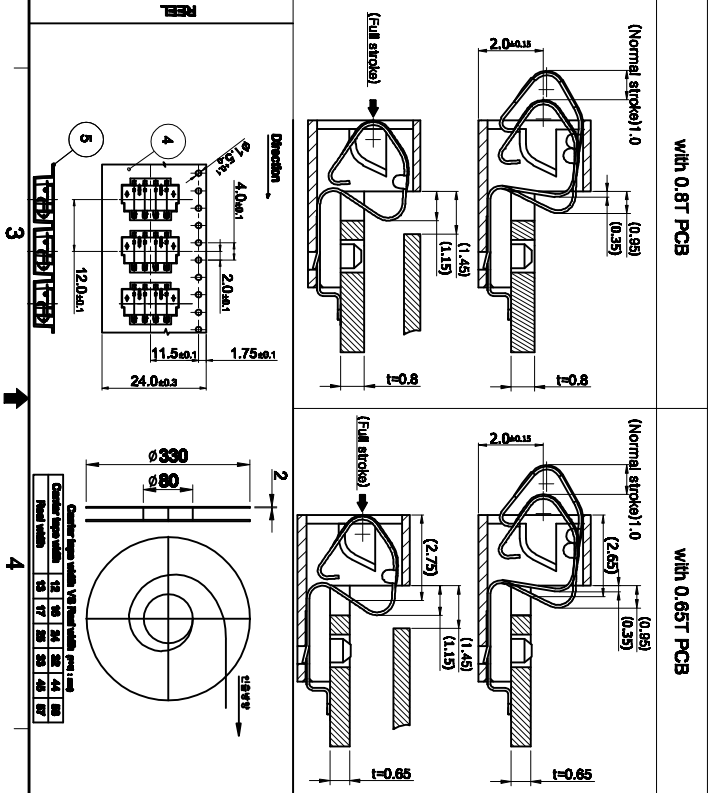
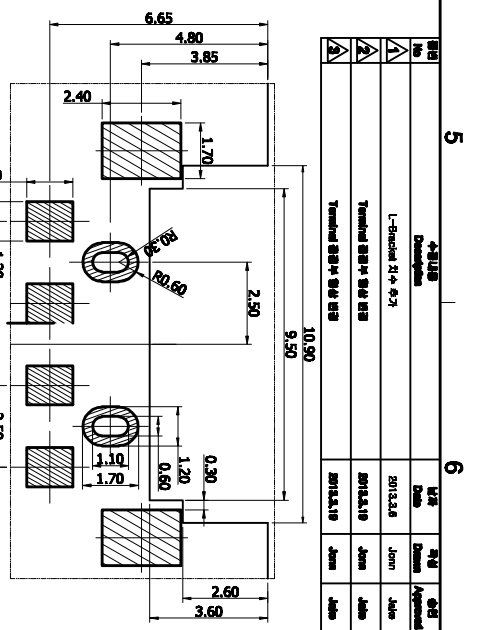
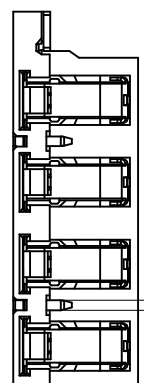
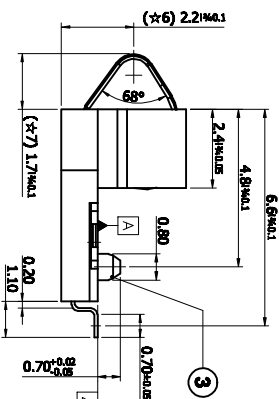


CTO dimensions	
① (★1)5.0mm±0.05	⑥ (★5)5.85mm±0.05
② (★2)3.80mm±0.05	⑦ (★6)2.5mm±0.1
③ (★3)2.5mm±0.1	⑧ (★7)1.7mm±0.1
④ (★4)12.9mm±0.1	⑨ (★8)2.5mm±0.1



No.	Part Name	Material	Spec	Notes
01	INSULATOR	EPTFE	UL94V-0-BLACK	4.2
02	TERMINAL	TIGI	NI-Pd-Ni-AU	0.11
03	T-BRACKET	BRASS	NI-SN	0.2X
04	L-BRACKET	BRASS	NI-SN	0.2X
05	EMBROSS TAPE	PS		
06	TOP TAPE	PS-PET		(AMBROSE)

Note
1. otherwise tolerance: X.X = ±0.1 / X.XX = ±0.05
2. Coplanarity: Terminal 0.08mm.
3. Plating.
1) TERMINAL
Contact area: Ni0.5µm~1.5µm+Pd~Niµm 0.3+Au0.05µm (Min)
SMD area: Ni0.5~1.5µm + Au0.05µm (Min)
Other: Ni0.5~1.5µm
2) L,T-BRACKET - Ni1~5µm + Sn2~7µm
4. () dimensions are reference.
5. * = C.T.O dim.

6. Do not contain any substances which are specified in (COA-2014)

REV	DATE	DESCRIPTION	BY	CHK
1	2013.3.6	Terminal 0.8T 4.2	Jam	Jam
2	2013.3.6	Terminal 0.65T 4.2	Jam	Jam
3	2013.3.19	Terminal 0.8T 4.2	Jam	Jam

REV	DATE	DESCRIPTION	BY	CHK
1	2013.12.6	Terminal 0.8T 4.2	Jam	Jam
2	2014.1.17	Terminal 0.8T 4.2	Jam	Jam
3	2014.1.17	Terminal 0.8T 4.2	Jam	Jam
4	2014.1.17	Terminal 0.8T 4.2	Jam	Jam
5	2014.1.17	Terminal 0.8T 4.2	Jam	Jam

Customer Order No. 141
Part No. 141
Lot No. 141

Amphenol
Applied Component International (China) Co., Ltd.

Mouser Electronics

Authorized Distributor

Click to View Pricing, Inventory, Delivery & Lifecycle Information:

[Amphenol:](#)

[202-03130-00438](#)