

CATALOG LISTING	TYPE	OPERATING PRESSURE RANGE
184PC05GX	G	0 TO +5 PSIG
185PC05DX	D	0 TO +5 PSID
186PC05DX	D	-5 TO +5 PSID

MOUNTING TYPE  
T = TERMINAL  
H = HOUSING

## GENERAL OPERATING CHARACTERISTICS

PRESSURE RANGE	0 TO 259mm Hg (0 TO 5 PSI)
OVERPRESSURE	1035mm Hg (20 PSI)
TEMPERATURE RANGES	STORAGE                    -55 TO +125°C OPERATE                    -40 TO +85°C COMPENSATED            0 TO +50°C
SUPPLY VOLTAGE	7 TO 16 VDC
SUPPLY CURRENT	6mA MAX WITH 10K LOAD
OUTPUT VOLTAGE	PROPORTIONAL TO SUPPLY VOLTAGE OVER ABOVE RECOMMENDED RANGE
SHORT CIRCUIT LIMIT	MAY BE SHORTED INDEFINITELY
OUTPUT RIPPLE	NONE
GROUND REFERENCE	SUPPLY AND OUTPUT ARE COMMON

## ELECTRICAL PERFORMANCE AT 25°C AND 8.00 ± 0.01 VDC SUPPLY

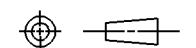
OUTPUT VOLTAGE	
184PC05G	
NULL (0 PSIG)	1.00±0.05 VDC
FULL SCALE (5 PSIG [259mmHg])	6.00 VDC (TYP) (P2<P1)
F.S.O. <u>5</u>	5.00±0.05 VDC (P2<P1)
185PC05D	
NULL (0 PSIG)	1.00±0.05 VDC
FULL SCALE (5 PSIG [259mmHg])	6.00 VDC (TYP) (P2>P1)
F.S.O. <u>5</u>	5.00±0.05 VDC (P2>P1)
186PC05D	
NULL (0 PSIG)	3.50±0.05 VDC
FULL SCALE (5 PSIG)	6.00 VDC (TYP) (P2>P1)
OUTPUT (5 PSIG)	1.00±0.20 VDC (P2<P1)
F.S.O. <u>5</u>	5.00 VDC TYP
SENSITIVITY	19.33mV/rmHg (1.0V/PSI)
LINEARITY (%F.S.O.) <u>5</u> (BFSL)	±1.0 MAX (P2<P1) ±2.0 MAX (P2>P1)
HYSTERESIS & REPEATABILITY (%F.S.O.) <u>5</u>	±0.25 TYP
TEMPERATURE ERROR (%F.S.O.) <u>5</u> 0°C < 25°C > 50°C	±2.0 MAX
RESPONSE TIME	1mSEC MAX

## NOTES

- 1 INPUT MEDIA :  
P1 - DRY GASES ONLY: CONNECTION SIDE OF SENSOR  
P2 - LIMITED ONLY TO THOSE MEDIA THAT WILL NOT ATTACK  
POLYESTER, SILICON, OR SILICONE BASED ADHESIVE
- 2 TERMINALS ARE PLATED FOR SOLDERING
- 3 LIMIT SOLDERING TO 315°C MAX FOR 10 SECONDS
- 4 UNITS ARE OF PLASTIC CONSTRUCTION
- 5 F.S.O. IS THE ALGEBRAIC DIFFERENCE BETWEEN THE  
OUTPUT END POINTS (NULL AND FULL PRESSURE)
- 6 FOR MOUNTING TYPE "T" DEVICES EXPOSED TO HIGH  
VIBRATION LEVELS, AS AN ADDED PROTECTION MEASURE,  
IT IS RECOMMENDED THAT AN ADHESIVE FOAM SECURE  
THE TRANSDUCER TO THE SUPPORTING STRUCTURE

---

THIRD ANGLE PROJECTION



SCALE	FULL
-------	------

DO NOT SCALE PRINT

UNLESS OTHERWISE SPECIFIED  
TOLERANCES ARE

ONE PLACE	(.0)	$\pm 0.76$
TWO PLACES	(.00)	$\pm 0.38$
THREE PLACES	(.000)	$\pm 0.15$
ANGLES		$\pm$

WEIGHT	7 GRAMS
--------	---------

THIS DRAWING COVERS A PROPRIETARY ITEM AND IS THE PROPERTY OF MICRO SWITCH, A DIVISION OF HONEYWELL. THIS DRAWING IS NOT TO BE COPIED OR USED WITHOUT THE APPROVAL OF MICRO SWITCH.

---

CATALOG LISTING

180PC05 SERIES CHART 1

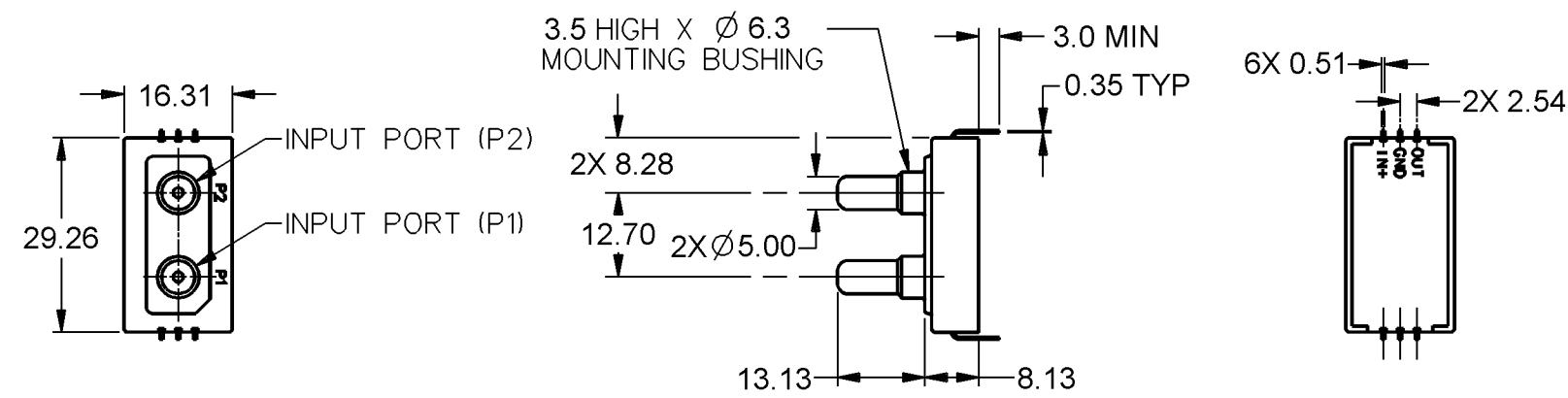
(8.00VDC SUPPLY EXCITATION)

**MICRO SWITCH**  
a Honeywell Division

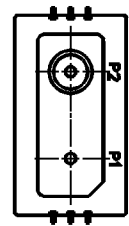
FED. MFG. CODE 91929

## PRESSURE TRANSDUCER

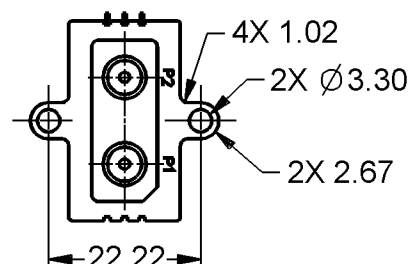
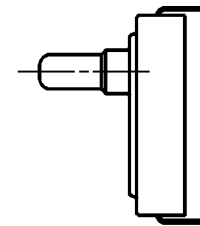
MASTER REDUCED  
ANSI Y14.5M-1982 APPLIES



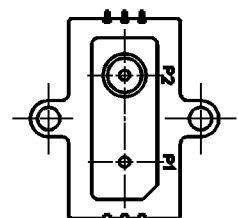
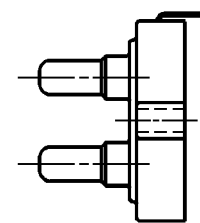
TYPE "D" (DIFFERENTIAL)  
MOUNTING TYPE = "T"



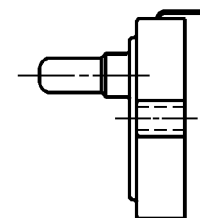
TYPE "G" (GAGE)  
MOUNTING TYPE = "T"



TYPE "D" (DIFFERENTIAL)  
MOUNTING TYPE = "H"



TYPE "G" (GAGE)  
MOUNTING TYPE = "H"



ISSUE	5	DRAWING NUMBER	M	180PC05 SERIES CHART 1
RELEASE NO. PR-16806			REPLACES	

REVISONS		19 MAY 10
A	PR17210 W J M 18 APR 89	
B	CO65871 T M M 13 JUN 89	
C	CO70150 J A F 1 SEP 93	
D	0064547 N R 19 MAY 10	
		RS
		CK

[illegible]DDM/CAD  
DRAWN

# Mouser Electronics

Authorized Distributor

Click to View Pricing, Inventory, Delivery & Lifecycle Information:

[Honeywell:](#)

[185PC05DH](#)