

This drawing involves proprietary design rights of Tyco Electronics Corporation, and all design, manufacture, reproduction, use and sale rights regarding the same are expressly reserved. It is submitted for a specific purpose and the recipient by accepting this drawing, assumes custody and control and agrees to take reasonable precautions; (a) that this drawing will not be copied and reproduced, in whole or in part, or its contents revealed in any manner, or to any person except to meet the purpose for which it was delivered and (b) that any special features peculiar to this design will not be incorporated in other projects without the expressed written permission of Tyco Electronics Corporation.

REVISIONS			
EC	REV	DESCRIPTION	DATE
0S10-0206-05	A	NEW RELEASE	06/08/05

NOTES: UNLESS OTHERWISE SPECIFIED.

1. PART NUMBER CHANGES AND OR DESIGN CHANGES AFFECTING ITEM INTERCHANGEABILITY REQUIRE PRIOR ELCON APPROVAL AND AUTHORIZATION BY REVISION TO THIS DRAWING.
2. MATERIALS:

INSULATORS: THERMOPLASTIC, GLASS REINFORCED, COLOR-BLACK. UL94V-0 FLAMMABILITY RATED.

SOLDER SIGNAL PIN: BRASS ALLOY.

POWER CONTACTS: PHOSPHOR BRONZE ALLOY, COPPER ALLOY.

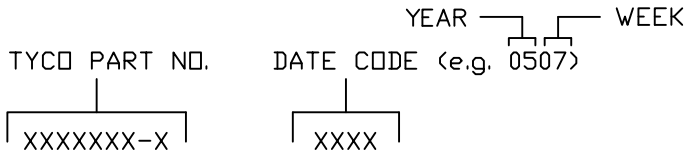
CROWN BANDS: BERYLLIUM COPPER ALLOY.
3. FINISHES:

CONTACTS: GOLD PLATED PER MIL-G-45204 TYPE II, CLASS 0, .000030" MIN. THK, OVER NICKEL PER QQ-N-290, CLASS 2, .000040" MIN. THICKNESS.

TERMINALS: TIN PLATED, MATTE FINISH 000100" MIN. THICKNESS.

4 MOUNTING FLANGES ACCEPT M3 OR NO. 4 SCREWS, (USER SUPPLIED)

5. ITEMS PROVIDED TO THIS SPECIFICATION TO BE PERMANENTLY IDENTIFIED PER THE FOLLOWING IDENTIFIER:



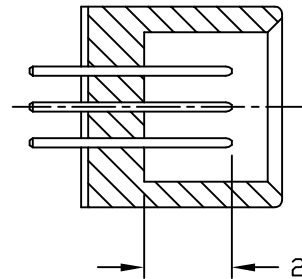
6. MODULE INFORMATION

CONNECTOR	TYCO PART NUMBER	CATALOG MODULE #	QTY	SIZE NO.	CONTACT QTY	MATING PIN	MAX. CURRENT (PER CONTACT)	CONTACT SPACING	VOLTAGE RATING*
SOCKET	6646632-1	FP1100	2	8	2	1.25 X 7.00 [.049 X .276]	35 AMPERES	7.50 [.2953]	250 VOLTS
		FP1301	1	22	24	.64 [.025] SQ.	3 AMPERES	2.50 [.0984]	125 VOLTS
		FP1500	1	LEFT MOUNTING FLANGE					
		FP1501	1	RIGHT MOUNTING FLANGE					

\*IAW IEC-950

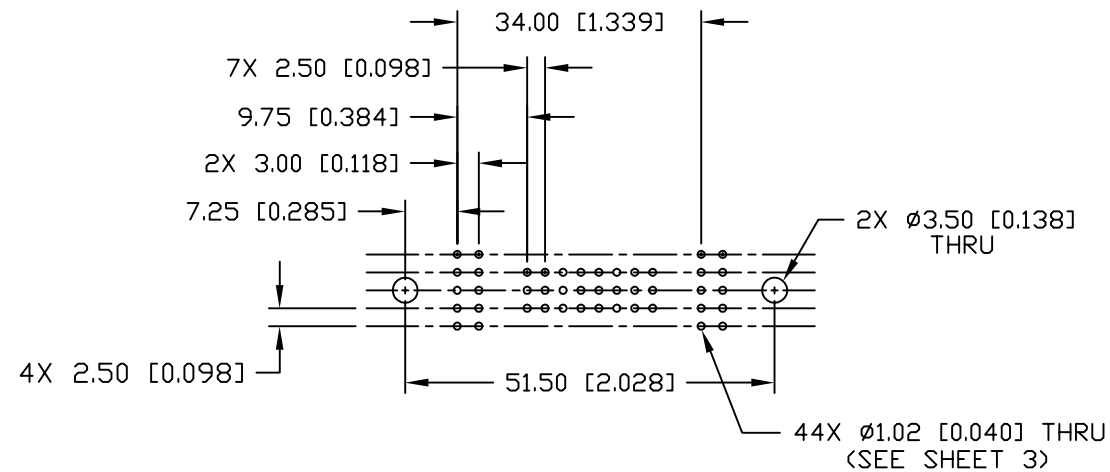
<div>← MM OR MM [INCH]</div> <div>INCH</div> <div>THIRD ANGLE PROJECTION</div> <div>UNLESS OTHERWISE SPECIFIED DIMENSIONS ARE IN METRIC [INCHES]</div> <div>TOLERANCES</div> <div>ANGLES ± .5°</div> <div>DECIMALS</div> <div>.XX ± .25 [.010]</div> <div>.X ± .5 [.020]</div>	DRAWN	DATE	<div><b>tyco</b> Tyco Electronics Corporation <b>Electronics</b> Menlo Park, Ca 94025</div> <div><b>ELCON</b></div> <div>TITLE</div> <div>CONNECTOR, SOCKET, STRAIGHT MEDIUM SOLDER TAILS FLATPAQ</div>		
	R. F. A.	06/07/05			
	CHECKED				
	APPROVED		SIZE	DWG NUMBER	REV.
	APPROVED		B	C = 6646632	A
	D. CHAU	06/08/05	ACAD FILE NUMBER C6646632A.DWG		
	DCA APPROVED	06/09/05	DWG SCALE 1 = 1 SH 1 OF 3		
	M. ALIM				

This drawing involves proprietary design rights of Tyco Electronics Corporation, and all design, manufacture, reproduction, use and sale rights regarding the same are expressly reserved. It is submitted for a specific purpose and the recipient by accepting this drawing, assumes custody and control and agrees to take reasonable precautions; (a) that this drawing will not be copied and reproduced, in whole or in part, or its contents revealed in any manner, or to any person except to meet the purpose for which it was delivered and (b) that any special features peculiar to this design will not be incorporated in other projects without the expressed written permission of Tyco Electronics Corporation.

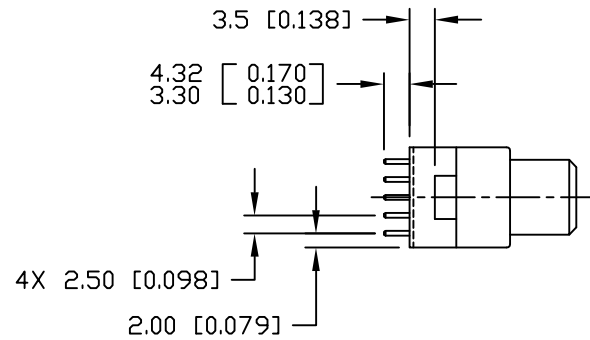


SECTION A-A

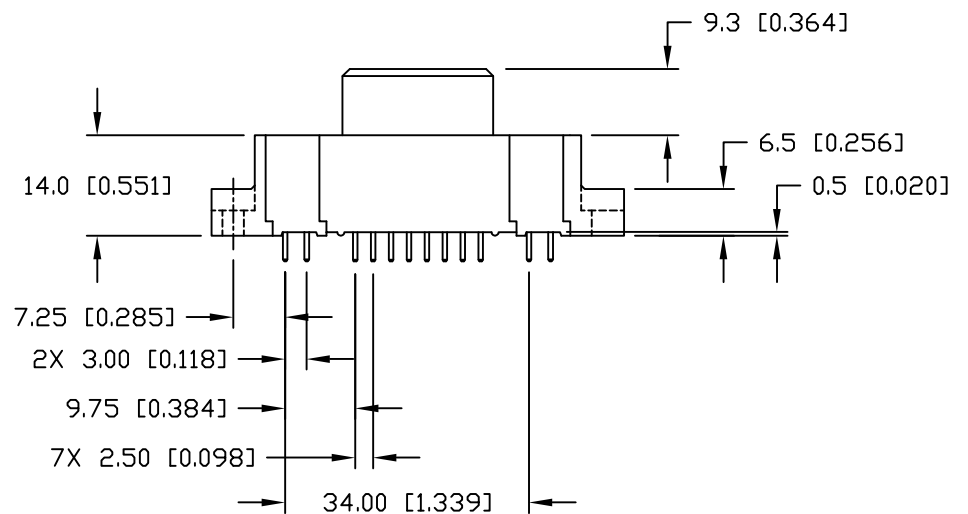
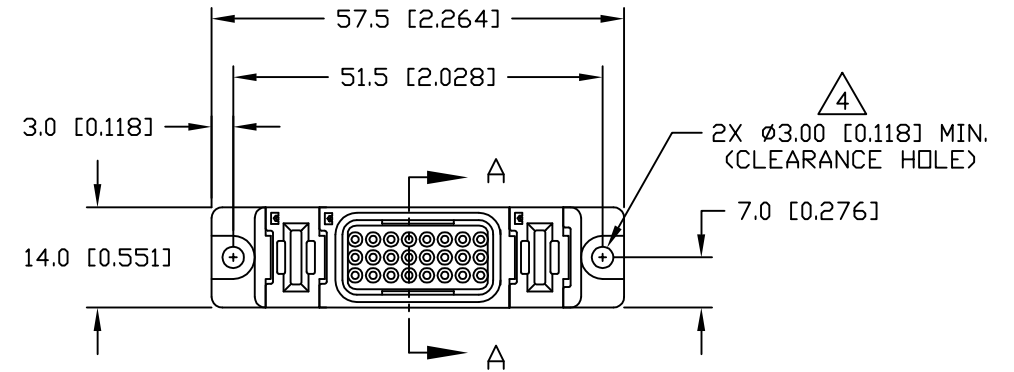
GENDER CHANGER NOT SHOWN FOR CLARITY



PRINTED CIRCUIT LAYOUT



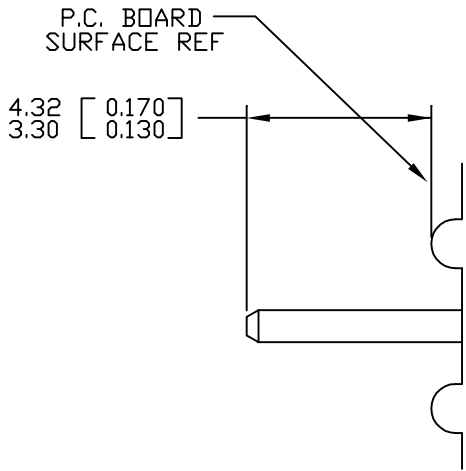
REVISIONS			
EC	REV	DESCRIPTION	DATE
		SEE SHEET 1	



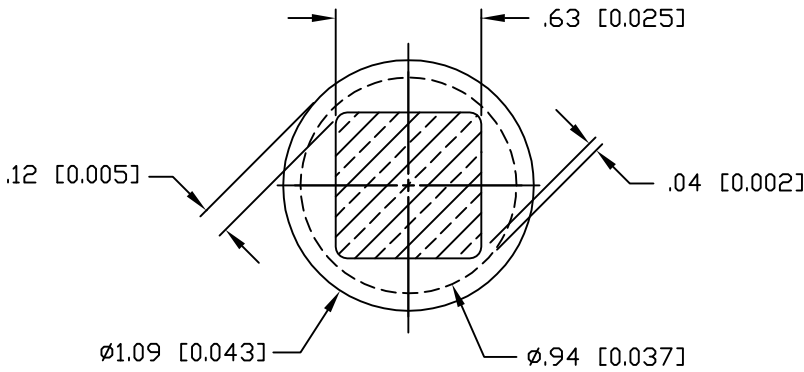
<div><div><div>← MM INCH</div><div>OR MM [INCH]</div></div><div></div><div>THIRD ANGLE PROJECTION</div><div>UNLESS OTHERWISE SPECIFIED DIMENSIONS ARE IN METRIC [INCHES]</div><div>TOLERANCES</div><div>ANGLES ± .5°</div><div>DECIMALS</div><div>.XX ± .25 [.010]</div><div>.X ± .5 [.020]</div></div>	DRAWN R. F. A.	DATE 06/07/05	<div><div><div><div>tyco</div><div>Electronics</div></div><div>Tyco Electronics Corporation Menlo Park, Ca 94025</div></div><div>ELCON</div></div>			
	CHECKED		TITLE			
	APPROVED		CONNECTOR, SOCKET, STRAIGHT MEDIUM SOLDER TAILS FLATPAQ			
	APPROVED					
	D. CHAU	06/08/05	SIZE	DWG NUMBER		REV.
DCA APPROVED		B	C = 6646632		A	
M. ALIM	06/09/05					
ACAD FILE NUMBER		C6646632A.DWG		DWG SCALE 1 = 1		SH 2 OF 3

This drawing involves proprietary design rights of Tyco Electronics Corporation, and all design, manufacture, reproduction, use and sale rights regarding the same are expressly reserved. It is submitted for a specific purpose and the recipient by accepting this drawing, assumes custody and control and agrees to take reasonable precautions; (a) that this drawing will not be copied and reproduced, in whole or in part, or its contents revealed in any manner, or to any person except to meet the purpose for which it was delivered and (b) that any special features peculiar to this design will not be incorporated in other projects without the expressed written permission of Tyco Electronics Corporation.

REVISIONS			
EC	REV	DESCRIPTION	DATE
		SEE SHEET 1	



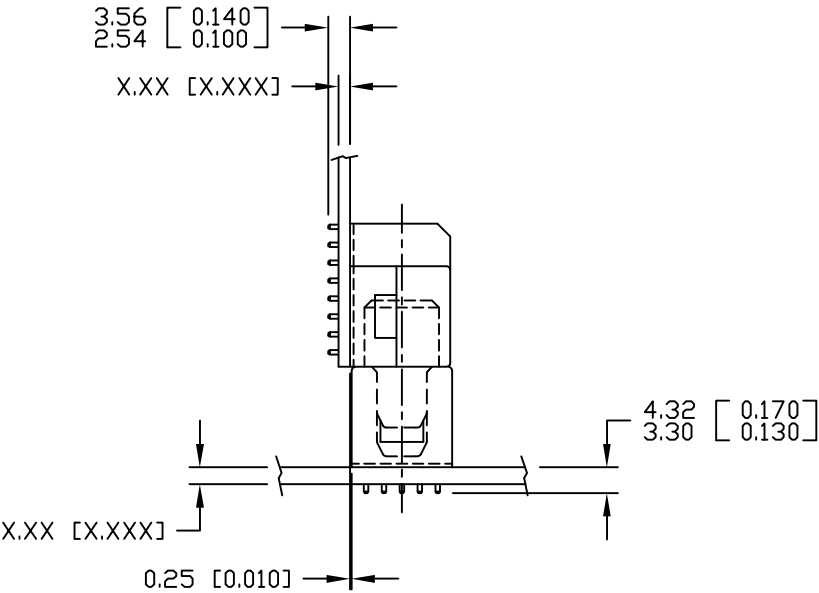
SOLDER PIN DETAIL



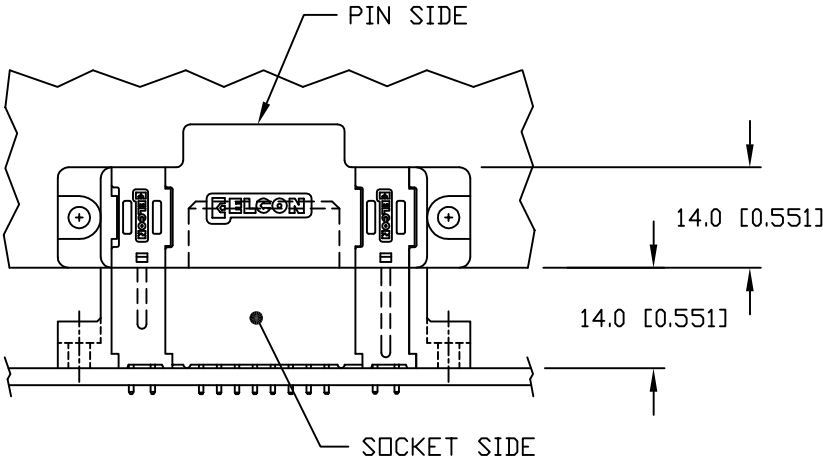
SOLDER TERMINATION AREA

RECOMMENDED PRINTED CIRCUIT HOLE

- FINISHED HOLE: Ø1.02 [0.040] ±.08 [0.003]
- DRILLED HOLE: Ø1.15 [0.0453] ±.013 [0.0005]
- COPPER PLATE: .025 [0.0010] MINIMUM (PER SURFACE)
- TIN PLATE: .008 [0.0003] MINIMUM (PER SURFACE)



MATED CONDITION



<div><div><div>MM INCH</div><div>OR MM [INCH]</div></div><div></div><div>THIRD ANGLE PROJECTION</div><div>UNLESS OTHERWISE SPECIFIED DIMENSIONS ARE IN METRIC [INCHES]</div><div>TOLERANCES</div><div>ANGLES ± .5°</div><div>DECIMALS</div><div>.XX ± .25 [.010]</div><div>.X ± .5 [.020]</div></div>	DRAWN R. F. A.	DATE 06/07/05	<div><div><div>tyco</div><div>Electronics</div></div><div>Tyco Electronics Corporation Menlo Park, Ca 94025</div><div>ELCON</div></div>		
	CHECKED		TITLE  USER INFORMATION SOLDER TAIL TERMINATION AND MATED CONDITION		
	APPROVED				
	APPROVED				
	D. CHAU	06/08/05	SIZE B	DWG NUMBER C = 6646632	REV. A
DCA APPROVED M. ALIM	06/09/05				
ACAD FILE NUMBER C6646632A.DWG		DWG SCALE 1 = 1		SH 3 OF 3	

# Mouser Electronics

Authorized Distributor

Click to View Pricing, Inventory, Delivery & Lifecycle Information:

[TE Connectivity:](#)

[6646632-1](#)