

# MICRO SWITCH

A DIVISION OF MINNEAPOLIS-HONEYWELL REGULATOR COMPANY  
MINNEAPOLIS, MINNESOTA

FED. MFR. CODE 91929

# SWITCH-BASIC

CATALOG LISTING

## IOBS210

IOBS210

M

DRAWING NUMBER

ISSUE

9

REPLACES

RELEASE NO. SR 9212

CHECK

CHECK

CHECK

CHECK

CHECK

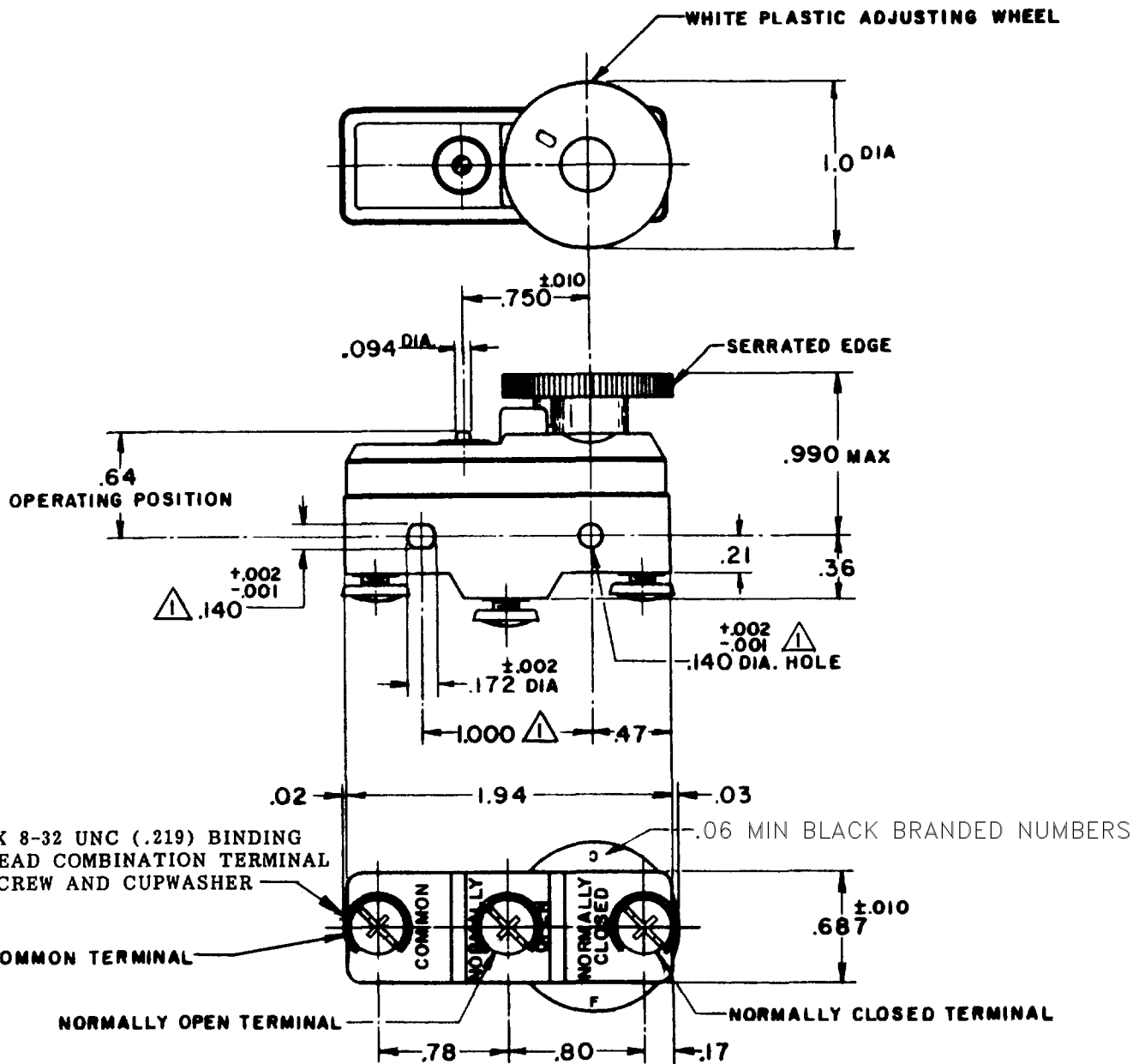
CHECK

CHECK

CHECK

CHECK

CHECK



**NOTE:**

- △ MOUNTING HOLES WILL ACCEPT PINS OR SCREWS OF .139 MAX. DIA. ON 1.000<sup>±.002</sup> CENTERS.
- 2-DIAL WHEEL IS SHOWN AT THE MAX SETTING OF BREAK DISTANCE.
- 3-DIAL WHEEL ROTATION 300°

THIS DRAWING COVERS A PROPRIETARY ITEM AND IS THE PROPERTY OF MICRO SWITCH, A DIVISION OF MINNEAPOLIS-HONEYWELL REGULATOR CO. THIS DRAWING IS NOT TO BE COPIED OR USED WITHOUT THE APPROVAL OF MICRO SWITCH.

**CHARACTERISTICS (AT MIN SETTING)**

AT MIN SETTING  
 OPERATING FORCE ----- 11-20 OZ  
 RELEASE FORCE ----- 10 OZ MIN  
 DIFFERENTIAL TRAVEL ----- .0015-.0025

AT MAX SETTING  
 DIFFERENTIAL TRAVEL ----- .007 MIN  
 OVERTRAVEL ----- .010 MIN

**ELECTRICAL DATA**

CONTACT ARRANGEMENT  
 S P D T

L17

20A 125, 250 OR 480 VAC  
 3/4 HP 125 VAC, 1 1/2 HP 250 VAC



**SCALE FULL**

DO NOT SCALE PRINT

UNLESS OTHERWISE SPECIFIED

DIMENSIONS ARE IN INCHES

**TOLERANCES ARE:**

ONE PLACE	(.0)	±.000
TWO PLACE	(.00)	±.010
THREE PLACE	(.000)	±.005
ANGLES		± 10°

WEIGHT

FORMTEK

DRAWN

MBF 31 AUG 60

B-CH 31 AUG 60

# Mouser Electronics

Authorized Distributor

Click to View Pricing, Inventory, Delivery & Lifecycle Information:

[Honeywell:](#)

[10BS210](#)