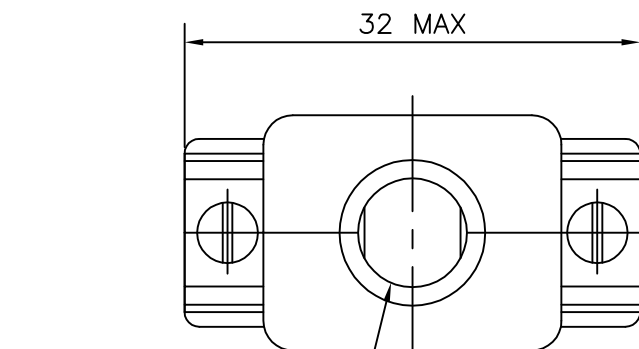
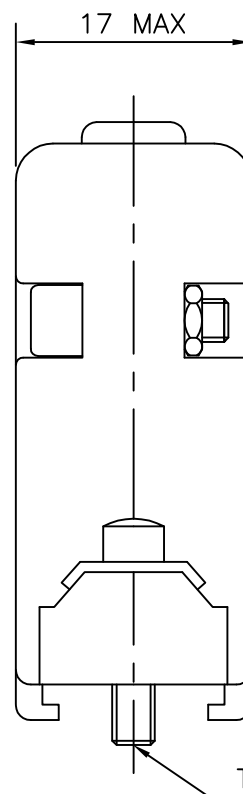
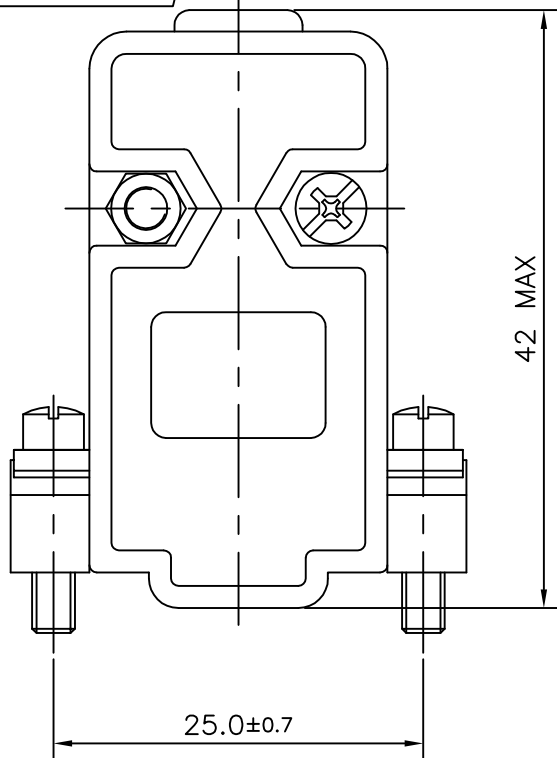


1

2

2	8630-CH09UNCLF	UNC 440
1	8630-CH09M3LF	M3
SL.NO.	PART NO:	THREAD

CABLE ENTRY $\phi 7.5$ MAX

THREAD

Amphenol
FCi

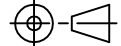
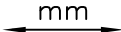

© 2016 AFCI

"This LF product meets European Union Directives and other country regulations as described in GS-47-0004"

Packaging as per GS-14-920

MATERIALS:

- 1.ABS UNFILLED UL 94 HB (STANDARD)
- 2.TEMP RANGE -55°C TO +85°C

mat'l. code —				surface ISO 1302 ✓		tolerance ISO 406 ISO 1101		projection 		product family D—SUB										
ltr	ecn no	dr	date	tolerances unless otherwise specified							title CONNECTOR HOOD 9 POS									
H	ELX-I-25452	GREGAR	2016-11-25	angles	linear	—														
						.00±0.1														
				O°±1°		—				scale NTS										
				dr	MINI K VANDANATH		1995-03-24			dwg no					sheet 1 of 1			size		
				engr	MITHUN PAUL		2016-11-25			C—DSUB—0022					A4					
				chr	GREGAR MATHEW		2016-11-25													
				appd	BIJU K PAUL		2016-11-25			type Product Customer Drawing										
sheet index		revision		H																
		sheet		1																

Mouser Electronics

Authorized Distributor

Click to View Pricing, Inventory, Delivery & Lifecycle Information:

[FCI / Amphenol:](#)

[8630CH09M3LF](#) [8630CH09UNCLF](#)