

FIGURE 1

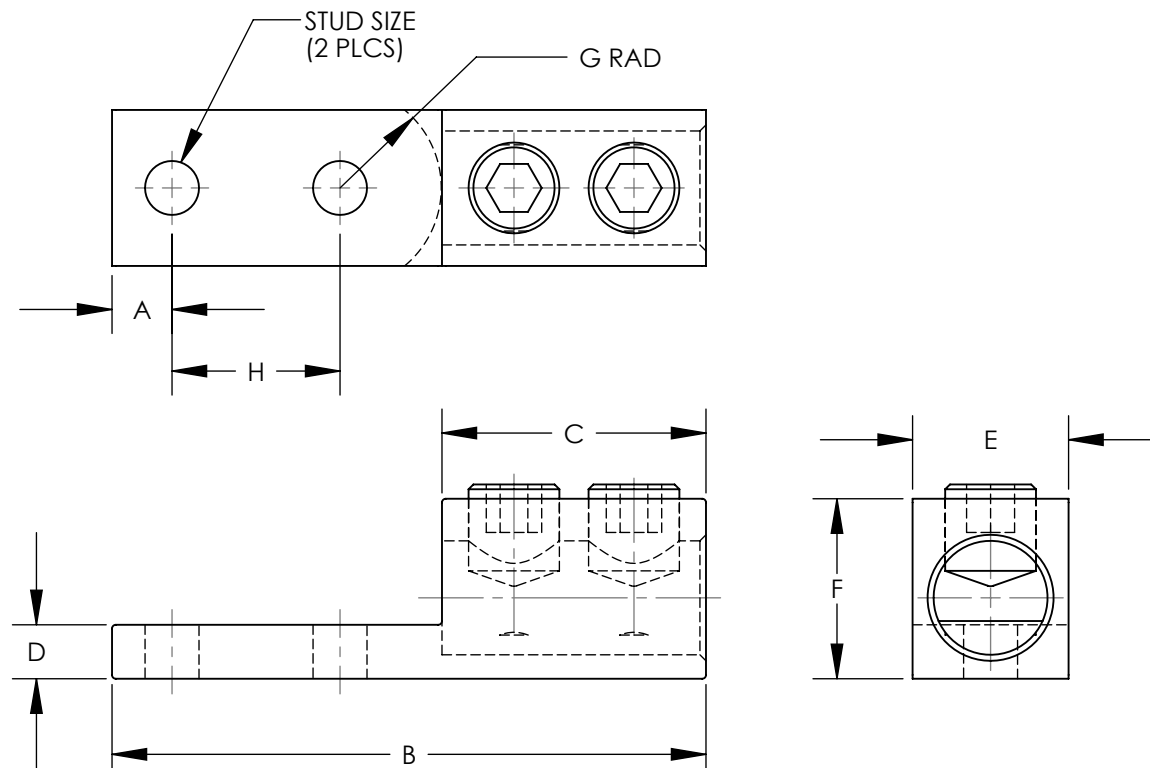


FIGURE 2

NOTES:

1. MATERIAL:
BODY - ALUMINUM, TIN PLATED
SCREW - ALUMINUM, TIN PLATED
2. UL LISTED & CSA CERTIFIED FOR USE UP TO 600V & TEMPERATURE RATED 90°C (AL9CU)
NOTE: LAMB350-12-6Y & LAMB600-12-3Y ARE cULus
3. DUAL RATED FOR USE WITH COPPER OR ALUMINUM STRANDED CODE CONDUCTOR
4. THESE PARTS ARE RoHS COMPLIANT
5. USE OF OXIDE INHIBITING JOINT COMPOUND LIKE PANDUIT CMP-100 RECOMMENDED FOR PAD TO PAD AND CONDUCTOR SURFACES
6. SEE PACKAGING LABEL FOR TIGHTENING TORQUE INFORMATION
7. PKG QTY:
6 = 6
3 = 3
8. ** DENOTES NEMA HOLE SPACING



PART NUMBER	FIGURE	WIRE RANGE COPPER/ALUMINUM	WIRE STRIP LENGTH IN [mm]	STUD SIZE IN.	DIM A IN [mm]	DIM B IN [mm]	DIM C IN [mm]	DIM D IN [mm]	DIM E IN [mm]	DIM F IN [mm]	DIM G IN [mm]	DIM H IN [mm]	HEX KEY*
LAMB350-12-6Y	1	350 kcmil - 6 AWG	1.13 [28.7]	1/2	.63 [16.0]	4.19 [106.4]	1.13 [28.7]	.25 [6.4]	1.13 [28.7]	1.25 [31.8]	.68 [17.3]	**1.75 [44.5]	5/16
LAMB600-12-3Y	1	600 kcmil - 2 AWG	1.38 [35.1]	1/2	.63 [16.0]	4.69 [119.1]	1.38 [35.1]	.44 [11.2]	1.50 [38.1]	1.56 [39.6]	.93 [23.6]	**1.75 [44.5]	1/2
LAMLB1000-12-3	2	500kcmil - 1000 kcmil	2.75 [69.9]	1/2	.63 [16.0]	6.19 [157.2]	2.75 [69.9]	.56 [14.2]	1.63 [41.4]	1.88 [47.8]	1.06 [27.0]	**1.75 [44.5]	1/2

* HEX SIZE MAY DIFFER FROM CHART. DIFFERENCE IN SIZE WILL NOT AFFECT FIT, FORM, OR FUNCTION OF PART

C41568_03

PANDUIT CORP. TINLEY PARK, ILLINOIS

LAMB,LAMLB ALUMINUM MECHANICAL LUGS
CUSTOMER DRAWING

REV	DATE	BY	CHK	DESCRIPTION	ECN	-R	SUP	CHK'D	UNLESS OTHERWISE SPECIFIED DIMENSIONAL TOLERANCES ARE: (.X) ± --- (.XXX) ± --- (.XX) ± --- ANGLES ± ---	UNLESS OTHERWISE SPECIFIED, ALL DIMENSIONS ARE GIVEN IN INCHES, THIRD ANGLE PROJECTION
03	12/11	JHNU	JHNU	D. REVISED HEX KEY FOR LAMB350-12: 5/16" WAS 3/8"	N41568BB-C41568	RGB	RGB		UNLESS OTHERWISE SPECIFIED DIMENSIONAL TOLERANCES ARE: (.X) ± --- (.XXX) ± --- (.XX) ± --- ANGLES ± ---	UNLESS OTHERWISE SPECIFIED, ALL DIMENSIONS ARE GIVEN IN INCHES, THIRD ANGLE PROJECTION
02	9/10	JHNU	JHNU	C. REMOVED INSTALLATION TORQUE COLUMN B. REMOVED LAMLB800-12-3Y A. ADDED LAMLB1000-12-3	N41568BB-C41568	FLD	FLD			
01	3/06	JHNU	LEM	REVISED RoHS NOTE	PC00334					
00	2/06	JHNU	LEM	DRAWING RELEASED - RoHS COMPLIANT	PC00299					
								DRAWN BY: JHNU DATE: 2/06 MAT'L: SEE NOTE 3 ABOVE	SCALE: NONE DRAWING NO / CAD FILE: C41568 DWG SIZE: B	

Mouser Electronics

Authorized Distributor

Click to View Pricing, Inventory, Delivery & Lifecycle Information:

[Panduit:](#)

[LAMB350-12-6Y](#) [LAMLB1000-12-3](#) [LAMB600-12-3Y](#)