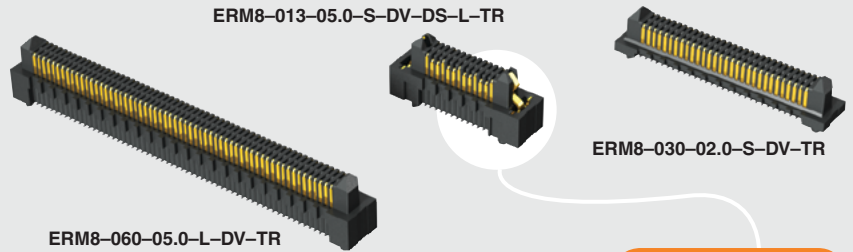




**EDGE  
RATE  
SYSTEM**

**(0.80 mm) .0315"**



**ERM8 SERIES**

# RUGGED HIGH-SPEED HEADER

## SPECIFICATIONS

For complete specifications and recommended PCB layouts see [www.samtec.com?ERM8](http://www.samtec.com?ERM8)

**Insulator Material:**  
Black LCP

**Terminal Material:**  
Phosphor Bronze

**Plating:**  
Au or Sn over  
50 μm (1.27 μm) Ni

**Current Rating:**  
2.2 A per per pin  
(2 pins powered)

**Operating Temp Range:**  
-55 °C to +125 °C

**Voltage Rating:**  
225 VAC / 318 VDC

**RoHS Compliant:**  
Yes

## PROCESSING

**Lead-Free Solderable:**  
Yes

**SMT Lead Coplanarity:**  
(0.10 mm) .004" max (005-030)  
(0.12 mm) .005" max (040-060)\*  
(0.15 mm) .006" max (070-100)\*  
\*(.004" stencil solutions may be available; contact IPG@samtec.com)

## RECOGNITIONS

For complete scope of recognitions see [www.samtec.com/quality](http://www.samtec.com/quality)



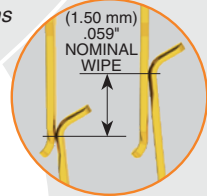
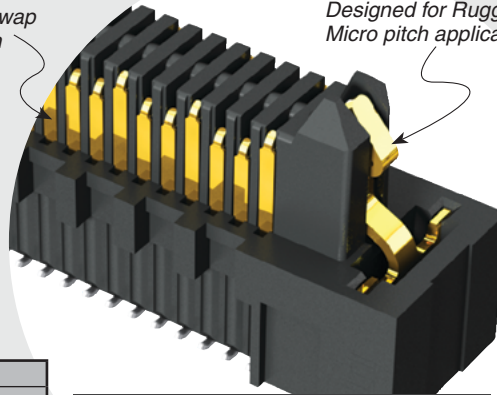
**Board Mates:**  
ERF8

**Cable Mates:**  
ERCD, ERDP

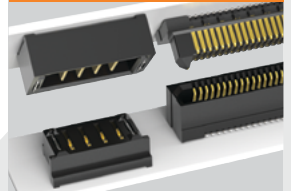


Hot Swap option

Designed for Rugged Micro pitch applications



## POWER/SIGNAL APPLICATION



Compatible with UMPT/JUMPS for flexible two-piece power/signal solutions

ERM8 LEAD STYLE	MATED HEIGHT*		
	ERF8 LEAD STYLE		
	-05.0	-07.0	-09.0
-02.0	(7.00) .276	(9.00) .354	(11.00) .453
-05.0	(10.00) .394	(12.00) .472	(14.00) .551
-08.0	(13.00) .512	(15.00) .591	(17.00) .669
-09.0	(14.00) .551	(16.00) .629	(18.00) .709

\*Processing conditions will affect mated height.

## HIGH-SPEED CHANNEL PERFORMANCE

ERM8/ERF8 @ 7 mm Mated Stack Height

Rated based on Samtec reference channel.

For full SI performance data visit [Samtec.com](http://Samtec.com) or contact SIG@samtec.com

PAM4

**56**  
Gbps

**ERM8** ■ **POSITIONS PER ROW** ■ **LEAD STYLE** ■ **PLATING OPTION** ■ **DV** ■ **OTHER OPTION** ■ **TR**

-005, -010, -011, -013, -020, -025, -030, -035, -040, -049, -050, -060, -070, -075, -100  
(Available with -09.0 lead style only)

Specify LEAD STYLE from chart

-L = 10 μm (0.25 μm) Gold on contact, Matte Tin on tail  
-S = 30 μm (0.76 μm) Gold on contact, Matte Tin on tail

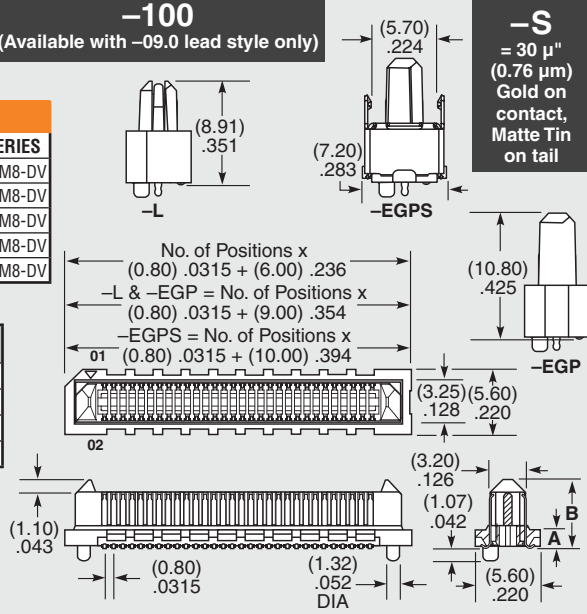
-DS = Differential Pair (-05.0 lead style only) (-010, -013, -025, -049 Positions only)  
-K = (4.00 mm) .157" DIA Polyimide Film Pick & Place Pad  
-L = Latching (-05.0 & -09.0 lead styles only) (Not available with -EGP & -EGPS options)  
-EGP = Extended Guide Post (-05.0 lead style only) (Not available with -L option)  
-EGPS = Extended Guide Post Shield (-05.0 & -09.0 lead style only) (-010, -020, -025, -030 Positions only) (Not available with -L option)  
-DSP = Differential Pair + Extended Guide Post (-05.0 lead styles only) (-013 & -025 Positions only)  
-DSS = Differential Pair + Extended Guide Post Shield (-05.0 lead styles only) (-025 positions only)

-TR = Tape & Reel Packaging (Not available with 100 positions)

## APPLICATIONS

STANDARD	POS.	PART NOS.	SERIES
NEXUS5001™.org	11	ASP-137968-01	ERM8-DV
POWER.org™	17	ASP-137972-01	ERM8-DV
ARM/HSSTP	20	ASP-130365-01	ERM8-DV
NEXUS5001™.org	23	ASP-130366-01	ERM8-DV
POWER.org™	35	ASP-135020-01	ERM8-DV

LEAD STYLE	A	B
-02.0	(1.61) .063	(5.97) .235
-05.0	(4.61) .181	(8.91) .351
-08.0	(7.61) .300	(11.91) .469
-09.0	(8.61) .339	(12.91) .508



**Notes:**  
Patented

Some lengths, styles and options are non-standard, non-returnable.

Due to technical progress, all designs, specifications and components are subject to change without notice.

[WWW.SAMTEC.COM](http://WWW.SAMTEC.COM)

All parts within this catalog are built to Samtec's specifications. Customer specific requirements must be approved by Samtec and identified in a Samtec customer-specific drawing to apply.

# Mouser Electronics

Authorized Distributor

Click to View Pricing, Inventory, Delivery & Lifecycle Information:

## Samtec:

[ERM8-075-01-L-D-EM2-L-TR](#) [ERM8-075-01-L-D-RA-L-TR](#) [ERM8-050-05.0-S-DV-K-TR](#) [ERM8-010-02.0-S-DV-K-TR](#)  
[ERM8-020-09.0-S-DV-K-TR](#) [ERM8-030-02.0-L-DV-TR](#) [ERM8-020-02.0-S-DV-K-TR](#) [ERM8-075-05.0-L-DV-TR](#) [ERM8-](#)  
[020-02.0-L-DV-TR](#) [ERM8-020-08.0-L-DV-K-TR](#) [ERM8-030-05.0-L-DV-L-K-TR](#) [ERM8-013-01-L-D-RA-K-TR](#) [ERM8-](#)  
[050-01-L-D-EM2-L-TR](#) [ERM8-060-01-L-D-RA-L-TR](#) [ERM8-050-01-L-D-RA-TR](#) [ERM8-050-02.0-L-DV-TR](#) [ERM8-020-](#)  
[02.0-S-DV-TR](#) [ERM8-060-05.0-L-DV-L-TR](#) [ERM8-030-05.0-L-DV-L-TR](#) [ERM8-040-01-L-D-RA-L-TR](#) [ERM8-040-05.0-](#)  
[L-DV-K-TR](#) [ERM8-060-08.0-S-DV-TR](#) [ERM8-060-08.0-L-DV-TR](#) [ERM8-010-05.0-L-DV-TR](#) [ERM8-025-08.0-L-DV-TR](#)  
[ERM8-010-01-L-D-EM2-TR](#) [ERM8-030-01-L-D-RA-K-TR](#) [ERM8-020-01-S-D-RA-L-TR](#) [ERM8-013-09.0-L-DV-TR](#)  
[ERM8-030-05.0-S-DV-L-TR](#) [ERM8-030-05.0-S-DV-K-TR](#) [ERM8-050-09.0-L-DV-K-TR](#) [ERM8-013-05.0-L-DV-K-TR](#)  
[ERM8-060-05.0-L-DV-TR](#) [ERM8-025-01-L-D-EM2-DS-L-TR](#) [ERM8-010-01-L-D-RA-TR](#) [ERM8-025-09.0-L-DV-TR](#)  
[ERM8-030-09.0-S-DV-K-TR](#) [ERM8-050-05.0-L-DV-TR](#) [ERM8-040-02.0-L-DV-TR](#) [ERM8-050-08.0-L-DV-K-TR](#) [ERM8-](#)  
[040-01-L-D-RA-TR](#) [ERM8-025-09.0-S-DV-K-TR](#) [ERM8-030-08.0-S-DV-K-TR](#) [ERM8-013-05.0-S-DV-L-K-TR](#) [ERM8-](#)  
[010-02.0-L-DV-TR](#) [ERM8-020-01-L-D-RA-L-K-TR](#) [ERM8-010-09.0-S-DV-K-TR](#) [ERM8-040-05.0-L-DV-L-K-TR](#) [ERM8-](#)  
[020-08.0-L-DV-TR](#) [ERM8-025-05.0-S-DV-L-K-TR](#) [ERM8-075-09.0-L-DV-K-TR](#) [ERM8-020-05.0-L-DV-L-TR](#) [ERM8-013-](#)  
[02.0-L-DV-K-TR](#) [ERM8-013-09.0-L-DV-K-TR](#) [ERM8-010-05.0-S-DV-K-TR](#) [ERM8-020-05.0-L-DV-K-TR](#) [ERM8-060-](#)  
[02.0-L-DV-K-TR](#) [ERM8-010-09.0-L-DV-TR](#) [ERM8-035-09.0-L-DV-K-TR](#) [ERM8-050-02.0-L-DV-K-TR](#) [ERM8-060-05.0-](#)  
[L-DV-K-TR](#) [ERM8-020-01-L-D-RA-L-TR](#) [ERM8-025-05.0-L-DV-K-TR](#) [ERM8-010-01-L-D-EM2-L-TR](#) [ERM8-010-08.0-L-](#)  
[DV-K-TR](#) [ERM8-020-05.0-S-DV-K-TR](#) [ERM8-030-05.0-L-DV-K-TR](#) [ERM8-050-01-S-D-RA-K-TR](#) [ERM8-075-08.0-S-](#)  
[DV-K-TR](#) [ERM8-050-01-L-D-RA-L-TR](#) [ERM8-020-02.0-L-DV-K-TR](#) [ERM8-050-09.0-L-DV-TR](#) [ERM8-040-01-L-D-RA-](#)  
[K-TR](#) [ERM8-050-05.0-S-DV-EGP-TR](#) [ERM8-060-02.0-L-DV-TR](#) [ERM8-075-01-L-D-RA-L-K-TR](#) [ERM8-040-09.0-L-DV-](#)  
[TR](#) [ERM8-005-08.0-L-DV-TR](#) [ERM8-020-05.0-L-DV-TR](#) [ERM8-025-02.0-S-DV-TR](#) [ERM8-030-05.0-S-DV-L-K-TR](#)  
[ERM8-005-02.0-L-DV-TR](#) [ERM8-025-02.0-S-DV-K-TR](#) [ERM8-060-05.0-S-DV-K-TR](#) [ERM8-040-08.0-S-DV-K-TR](#)  
[ERM8-010-09.0-L-DV-K-TR](#) [ERM8-013-05.0-L-DV-L-TR](#) [ERM8-040-02.0-L-DV-K-TR](#) [ERM8-060-02.0-S-DV-K-TR](#)  
[ERM8-025-05.0-L-DV-TR](#) [ERM8-040-05.0-S-DV-K-TR](#) [ERM8-050-01-L-D-EM2-TR](#) [ERM8-040-02.0-S-DV-TR](#) [ERM8-](#)  
[050-05.0-L-DV-K-TR](#) [ERM8-075-05.0-L-DV-K-TR](#) [ERM8-020-01-S-D-EM2-TR](#) [ERM8-020-09.0-L-DV-K-TR](#) [ERM8-](#)  
[030-01-L-D-RA-L-K-TR](#) [ERM8-030-01-L-D-RA-TR](#)