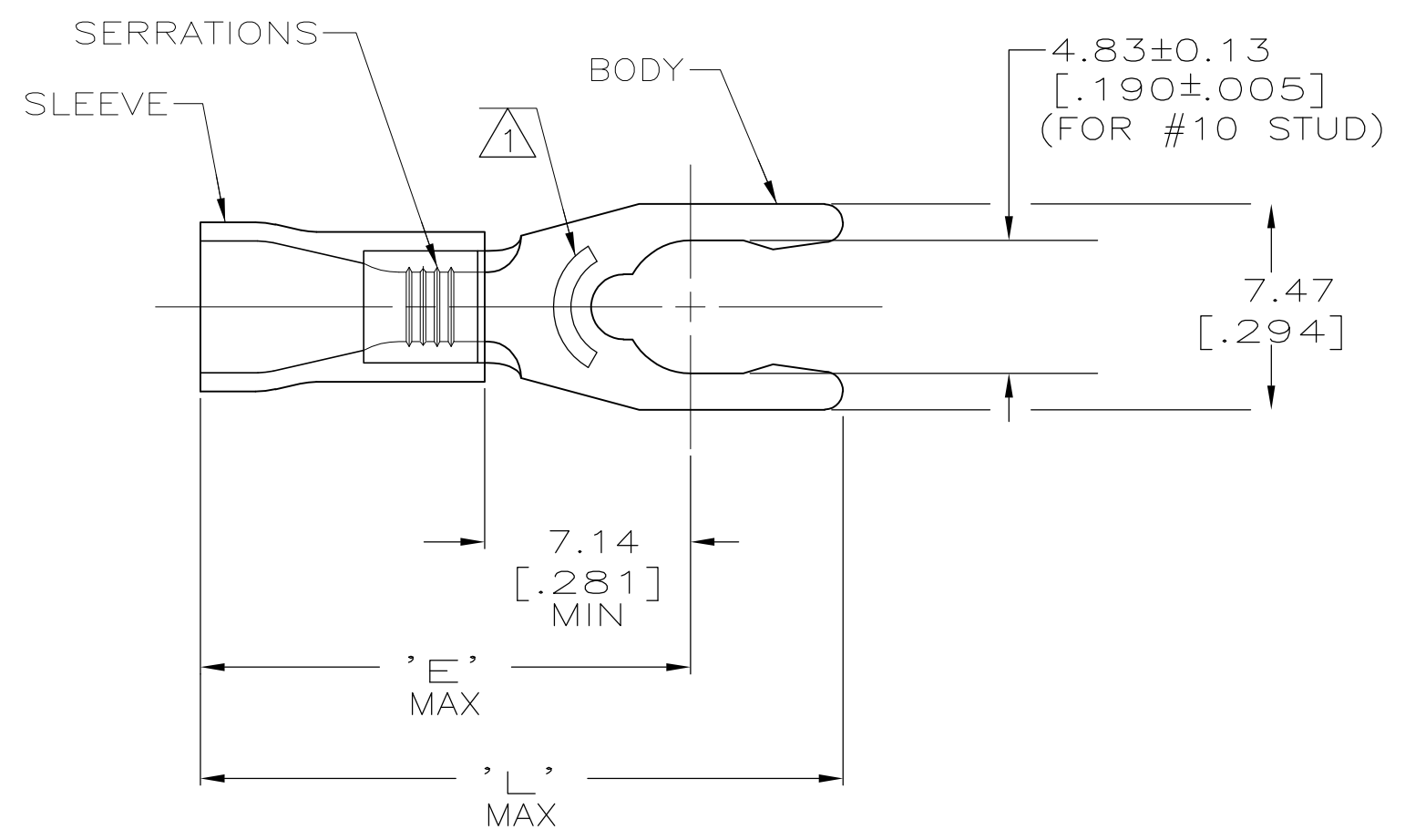


THIS DRAWING IS UNPUBLISHED. RELEASED FOR PUBLICATION
 © COPYRIGHT BY TYCO ELECTRONICS CORPORATION. ALL RIGHTS RESERVED.

| LOC | DIST | REVISIONS | | | | | |
|-----|------|-----------|-----|-----------------------|---------|-----|------|
| G | 14 | P | LTR | DESCRIPTION | DATE | DWN | APVD |
| | | M | | REV PER ECR 10-005023 | 05MAR10 | JR | TM |

| | | |
|--------------------------------|--------------------------------|--------------------------------|
| AMP WIRE RANGE | Listed | LR7189 Certified |
| 16-14 AWG SOLID OR STRANDED | 16-14 AWG SOLID OR STRANDED | 16-14 AWG SOLID OR STRANDED |



- 1 STAMP 10S AMP 16-14* APPROX AS SHOWN
- 2 SEE TABLE FOR WIRE INSUL DIA
- 3 TONGUE MATERIAL THK IS 0.79±0.05 [.031±.002].
- 4 MATERIAL: BODY - BRASS PER ASTM B-36
SLEEVE - PVC, COLOR - BLUE

| | | | | | |
|-----------------|-----------------|----------------------|--------------|------------------------------|--------------------|
| 24.61 [.969] | 18.95 [.746] | .150 - .250 | 2500 | ON TAPE, REEL | 53245-6 |
| 23.37 [.920] | 17.70 [.697] | .118 - .195 | 5000 1000 | ON TAPE, REEL LOOSE PIECE | 53245-2 53245-1 |
| "L" | "E" | WIRE INSUL DIA | QTY | PACKAGE TYPE | PART NO. |

| | | |
|----------------------------------------------------------------------------------|----------------------------------------------|-------------------------------------------------------------------------------------------------------------------------------------------------------------------------------|
| AMP INCORPORATED CUSTOMER SERVICE SYSTEMS | | MAX RECOMMENDED OPERATING TEMPERATURE: 105°C [221° F] |
| FOR ADDITIONAL PRODUCT INFORMATION OR COPIES OF DRAWINGS AND TECHNICAL DOCUMENTS | PRODUCT INFORMATION CENTER 1-800-522-6752 | VOLTAGE RATING: 600V MAX (1000V FIXTURE OR SIGN) |
| FOR APPLICATION TOOLING INFORMATION | TOOLING ASSISTANCE CENTER 1-800-722-1111 | CIRCULAR MIL AREA: 1.04-2.62mm² [2,050-5,180] SOLID OR STRANDED |
| FOR ORDER ENTRY | 1-800-526-5142 | THIS DRAWING IS A CONTROLLED DOCUMENT FOR AMP INCORPORATED. IT IS SUBJECT TO CHANGE AND THE CONTROLLING ENGINEERING ORGANIZATION SHOULD BE CONTACTED FOR THE LATEST REVISION. |

| | |
|----------------------------------------|--------------------------------------------------------------------------------------|
| THIS DRAWING IS A CONTROLLED DOCUMENT. | |
| DIMENSIONS: MM[INCHES] | TOLERANCES UNLESS OTHERWISE SPECIFIED: |
| | 0 PLC ± - 1 PLC ± - 2 PLC ± 0.20[.008] 3 PLC ± - 4 PLC ± - ANGLES ± - |
| MATERIAL | FINISH |
| | TIN PER ASTM B545 |

| | | |
|------------------------------|-----------------------------------------------------------------------------|--------------------|
| DWN DK SCHRUM 12/11/92 | Tyco Electronics Corporation Harrisburg, Pa 17105-3608 | |
| CHK RE HERSEY 1/4/93 | NAME TERMINAL, SPRING SPADE, SHORT, PLASTI-GRIP, WIRE SIZE, 16-14 AWG | |
| APVD M BARNABA 1/4/93 | PRODUCT SPEC UL 486A | |
| APPLICATION SPEC | SIZE A3 | CAGE CODE 00779 |
| WEIGHT - | DRAWING NO G-53245 | RESTRICTED TO - |
| CUSTOMER DRAWING | | SCALE 4:1 |
| | | SHEET 1 OF 1 |
| | | REV M |

Mouser Electronics

Authorized Distributor

Click to View Pricing, Inventory, Delivery & Lifecycle Information:

[TE Connectivity:](#)

[53245-2](#)