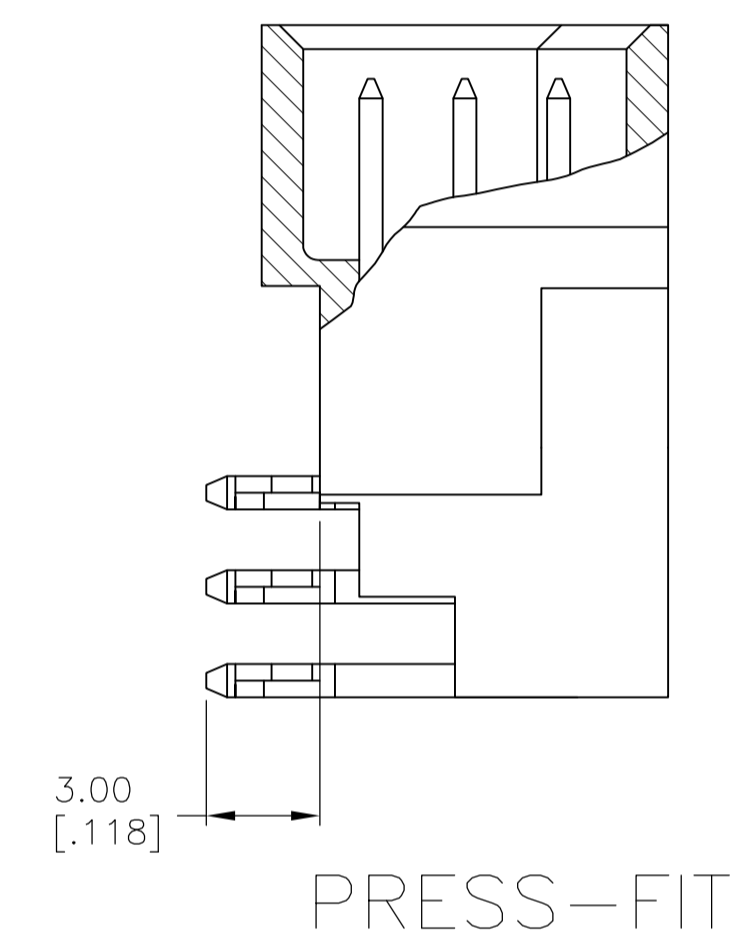
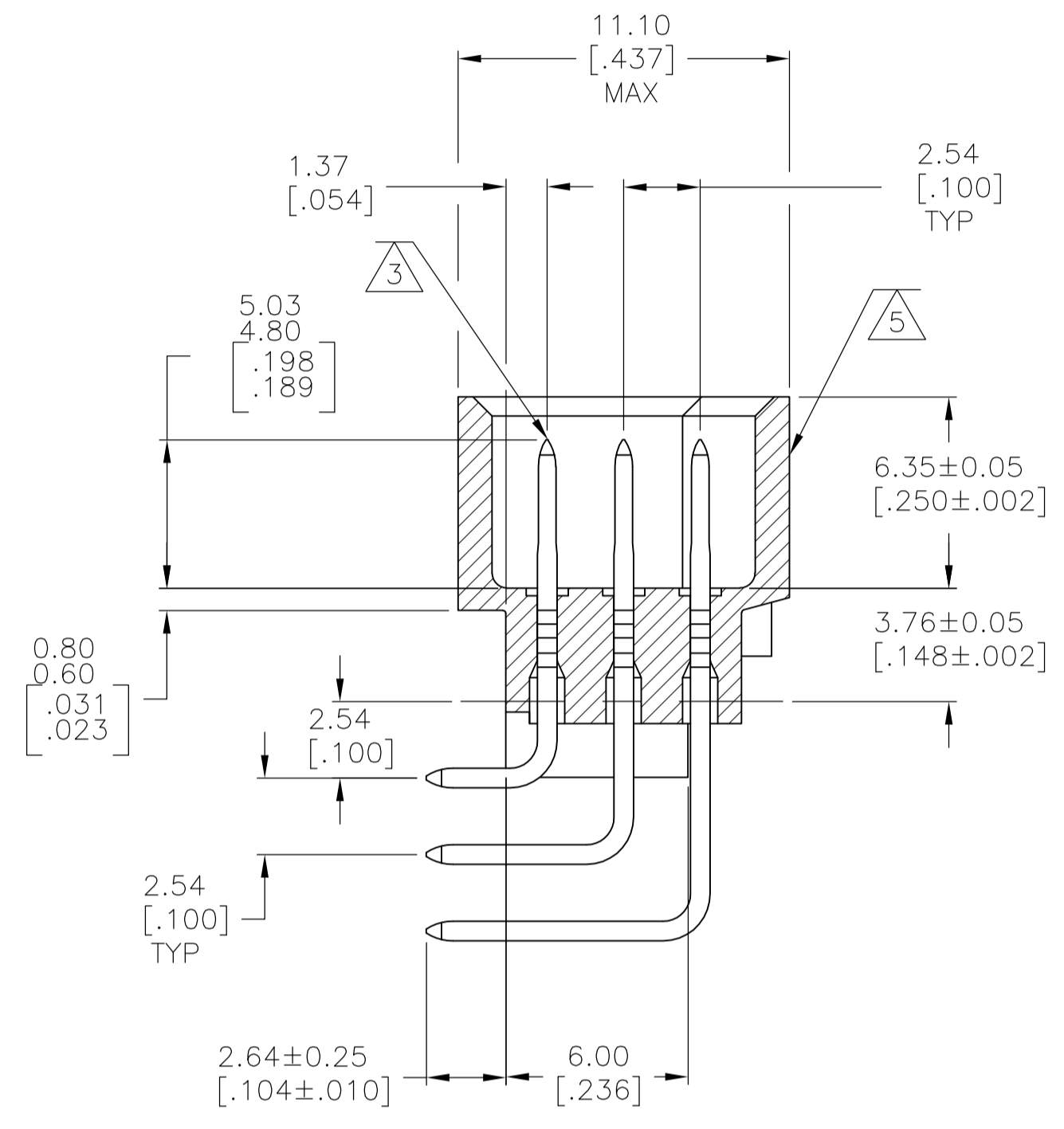
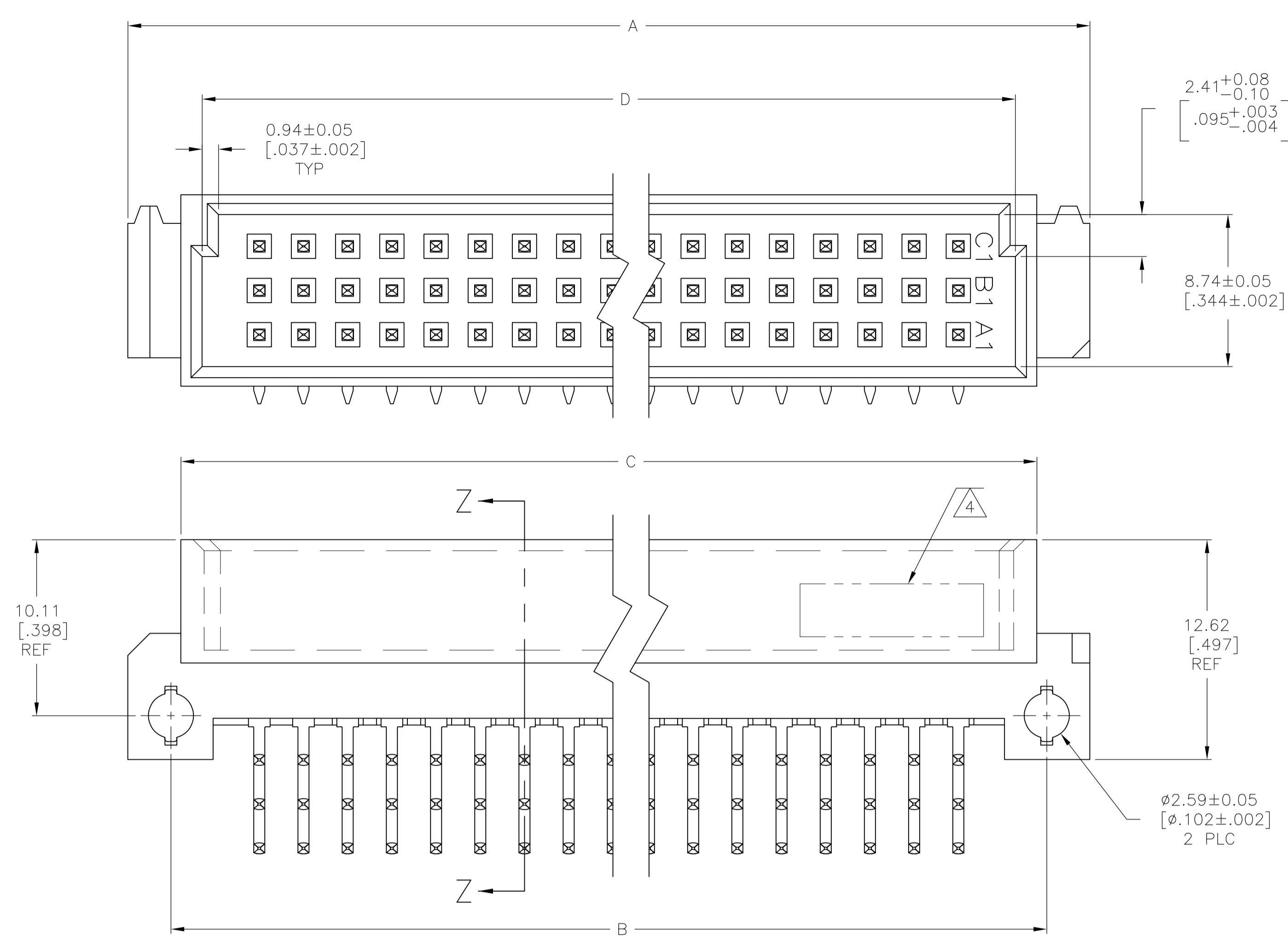
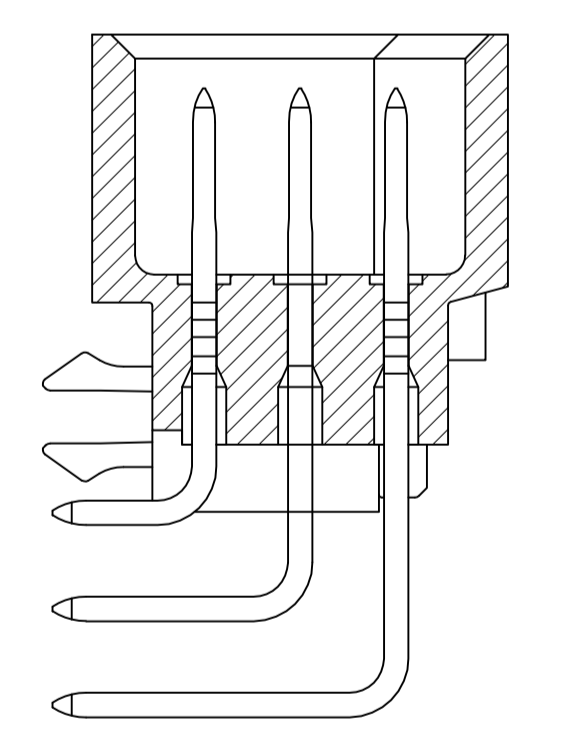


LOC	DIST	REVISIONS			
AD	00	REVISED PER ECO-14-009163	18JUN2014	AP	RP

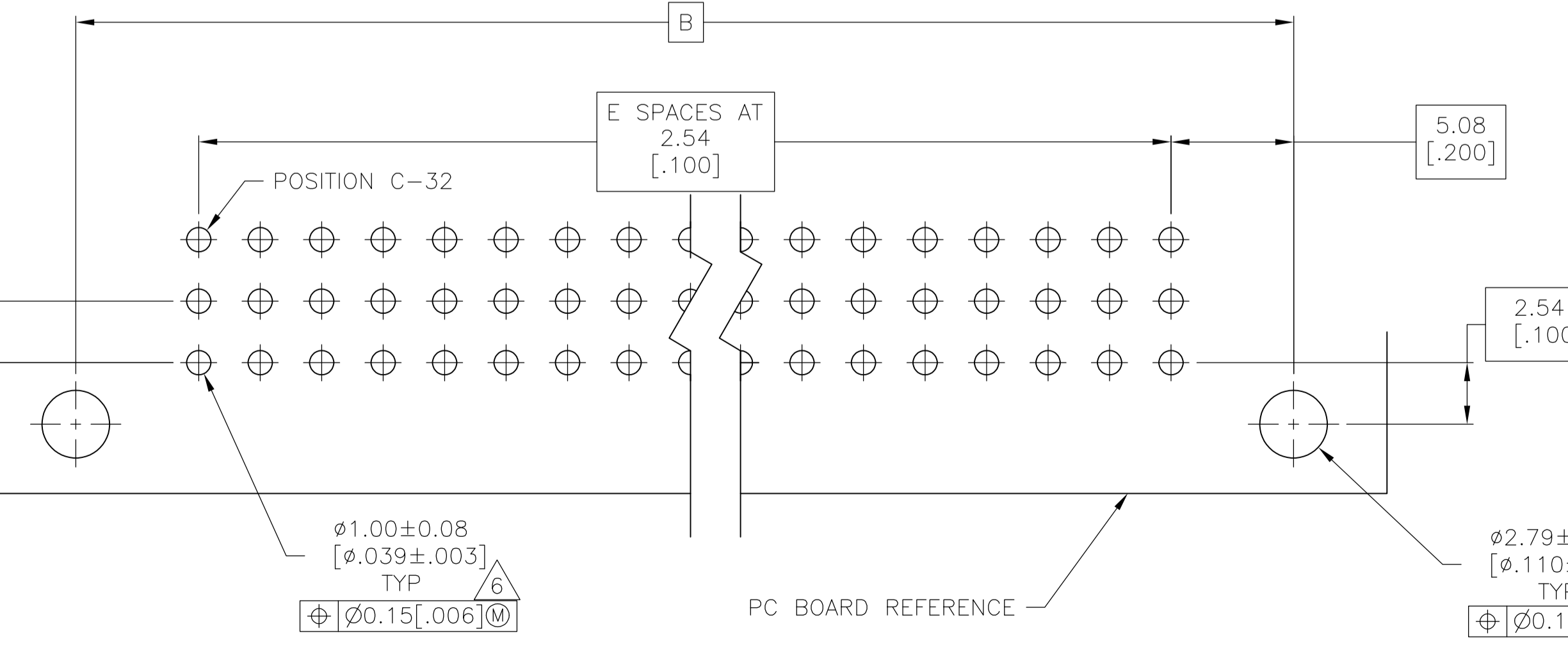
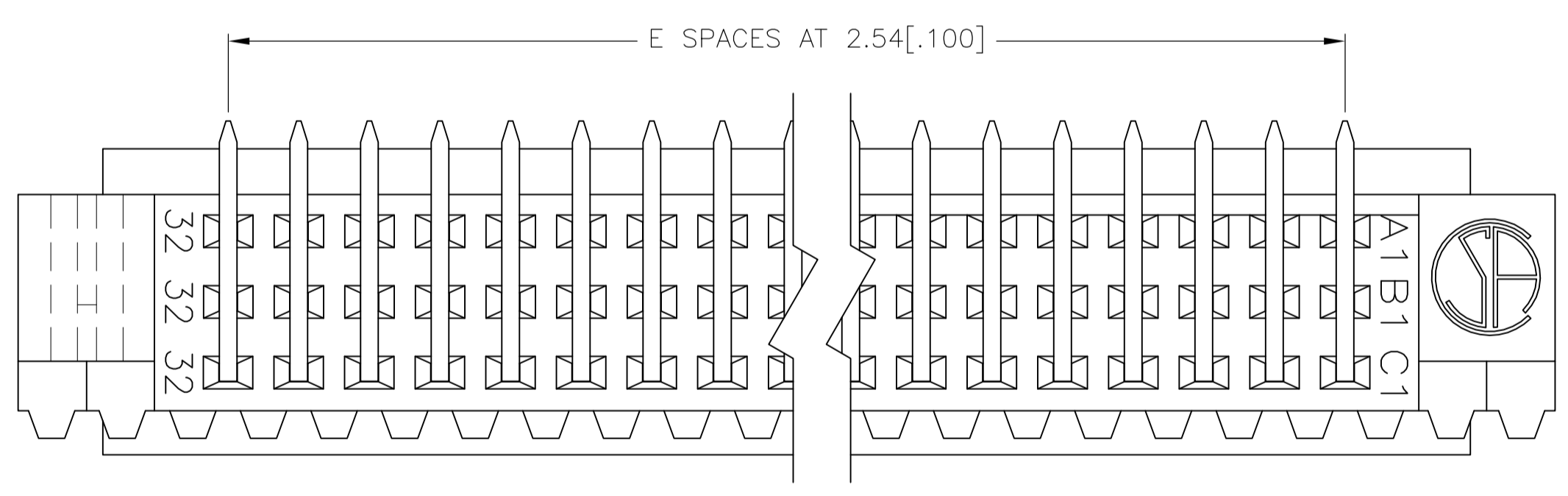
- 1 HOUSING MATERIAL: GLASS-FILLED POLYMER.
- 2 POST MATERIAL: COPPER ALLOY.
- 3 NICKEL UNDERPLATE 1.27UM [.000050] ON ALL CONTACTS.
- 4 PART NUMBER, DATE CODE MARKED THIS APPROXIMATE AREA.
- 5 MARKING ON THIS SIDE.
- 6 RECOMMENDED HOLE SIZE FOR MANUAL APPLICATION OF SOLDER CONNECTORS INTO PC BOARD. REFERENCE APPLICATION SPEC 114-9014 FOR RECOMMENDED PLATED THROUGH HOLE SIZE FOR PRESS-FIT APPLICATIONS



PRESS-FIT



BOARD LOCK



PC BOARD LAYOUT

E	D	C	B	A	ROWS LOADED	NO. OF LOADED POSITIONS	HOUSING SIZE	ROHS Compliant	ROHS Compliant	Non ROHS Compliant	ROHS Compliant	ROHS Compliant	ROHS Compliant	ROHS Compliant	ROHS Compliant	ROHS Compliant	ROHS Compliant	ROHS Compliant		
49	131.01	133.48	134.62	139.7	A-B-C	150	150											650907-5	5650915-5	5650907-5
39	105.61	108.08	109.22	114.3	A-B-C	120	120											650906-5	5650914-5	5650906-5
31	85.29	87.76	88.9	94.0	A-C	64		216432-4	216432-1		650473-8	650945-3	536356-5	650945-5	5536356-5			650945-5		5650945-5
31	85.29	87.76	88.9	94.0	A-B-C	96		215605-4	215605-1			650473-3	650913-5	650473-5	5650913-5			650473-5		5650473-5
15	44.65	47.12	48.26	53.34	A-C	32		106276-4				650946-3	650978-5	650946-5	5650978-5			650946-5		5650946-5
15	44.65	47.12	48.26	53.34	A-B-C	48		216398-4	216398-1			650478-3	148020-5	650478-5	5148020-5			650478-5		5650478-5
								Press-fit	Press-fit	Wave Solder	Wave Solder	Wave Solder	Wave Solder	Wave Solder	Reflow 260°C	Reflow 260°C				
								ROHS Compliant	ROHS Compliant	Non ROHS Compliant	ROHS Compliant	ROHS Compliant	ROHS Compliant	ROHS Compliant	ROHS Compliant	ROHS Compliant	ROHS Compliant	ROHS Compliant	ROHS Compliant	ROHS Compliant
								DIN 41612 Level II	1.25um GOLD	DIN 41612 Level II	Gold Flash	DIN 41612 Level II	DIN 41612 Level II	DIN 41612 Level II	DIN 41612 Level II	DIN 41612 Level II	DIN 41612 Level II	DIN 41612 Level II	DIN 41612 Level II	DIN 41612 Level II
								No Boardlock	No Boardlock	No Boardlock	No Boardlock	With Boardlock	No Boardlock	No Boardlock	With Boardlock	No Boardlock	No Boardlock	No Boardlock	No Boardlock	No Boardlock

THIS DRAWING IS A CONTROLLED DOCUMENT.		DIN	L BRINER	2/13/91
DIMENSIONS: mm [INCHES]		CHK	D.C.RUBENDALL	2/13/91
TOLERANCES UNLESS OTHERWISE SPECIFIED:		APPRO	D.C.RUBENDALL	2/13/91
0 PLC ± -		NAME	ASSEMBLY, PIN EUROCARD, TYPE C, .104 SOLDER POST	
1 PLC ± -		SIZE	A1	00779 C=650473
2 PLC ± ± 0.13[.005]		WEIGHT	-	
3 PLC ± -		SCALE	5:1	
4 PLC ± -		SHEET	1 of 1	
ANGLES ± -		REV	S	
FINISH		CUSTOMER DRAWING		

Mouser Electronics

Authorized Distributor

Click to View Pricing, Inventory, Delivery & Lifecycle Information:

[TE Connectivity:](#)

[5650478-5](#)