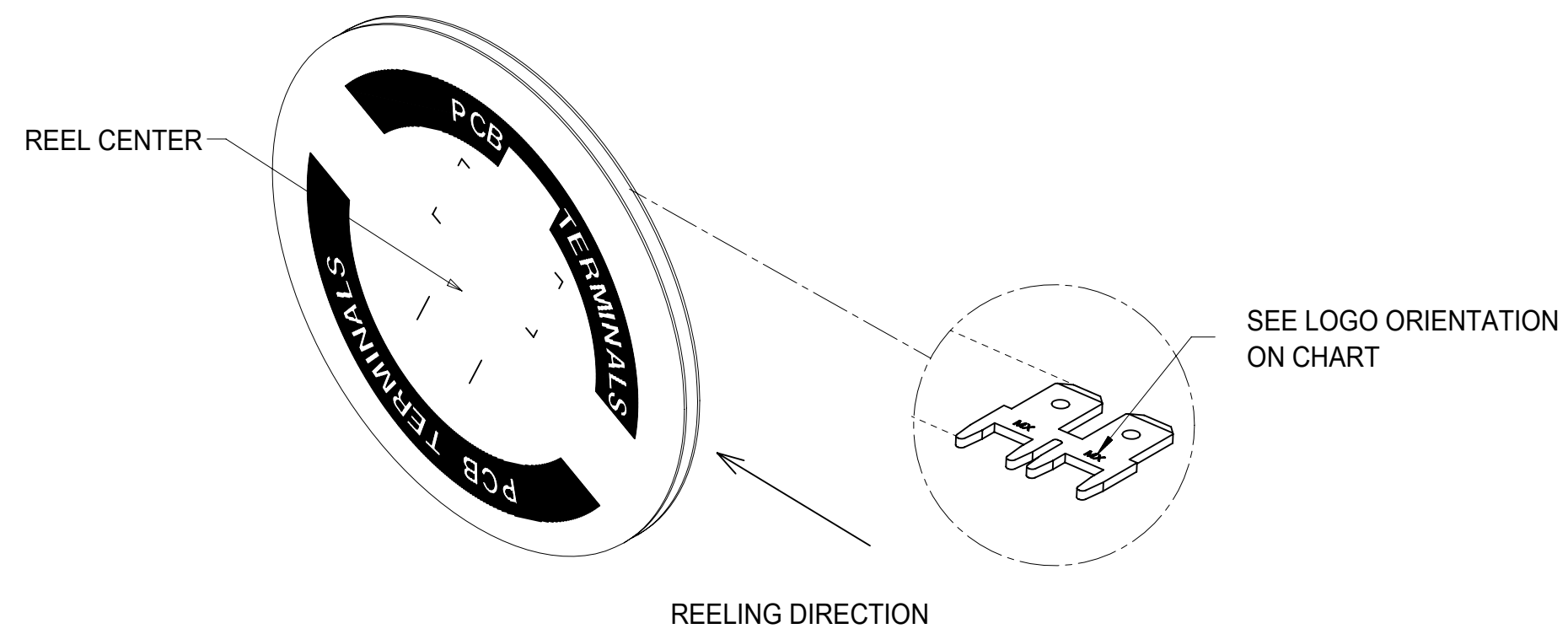
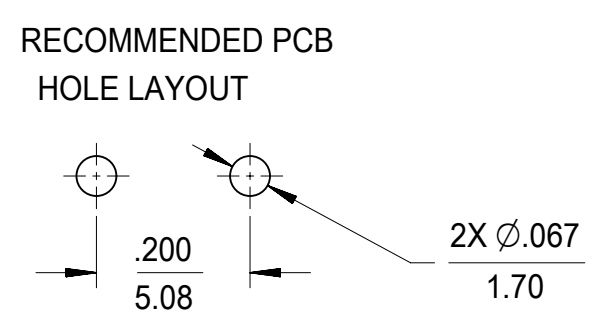
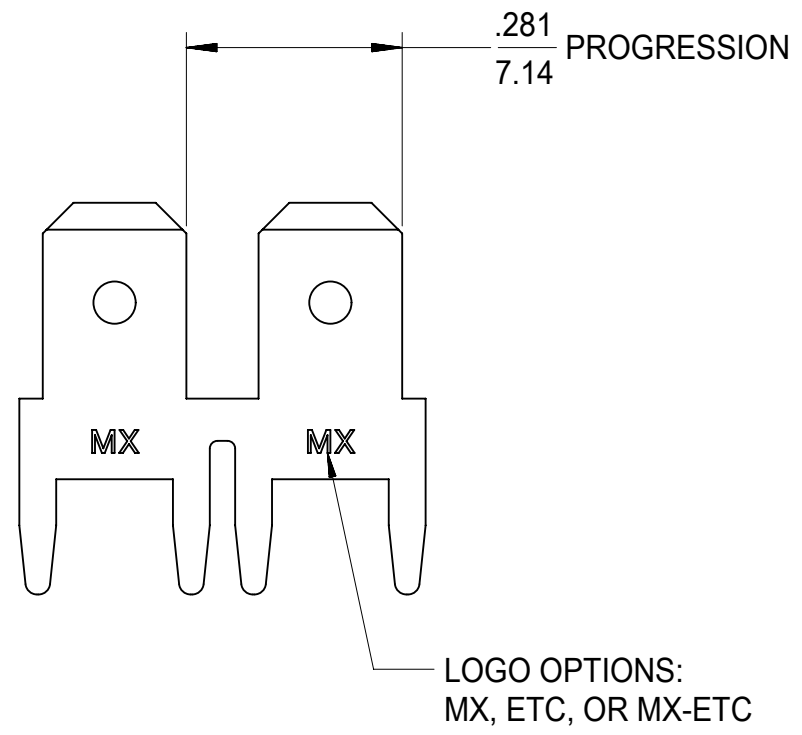
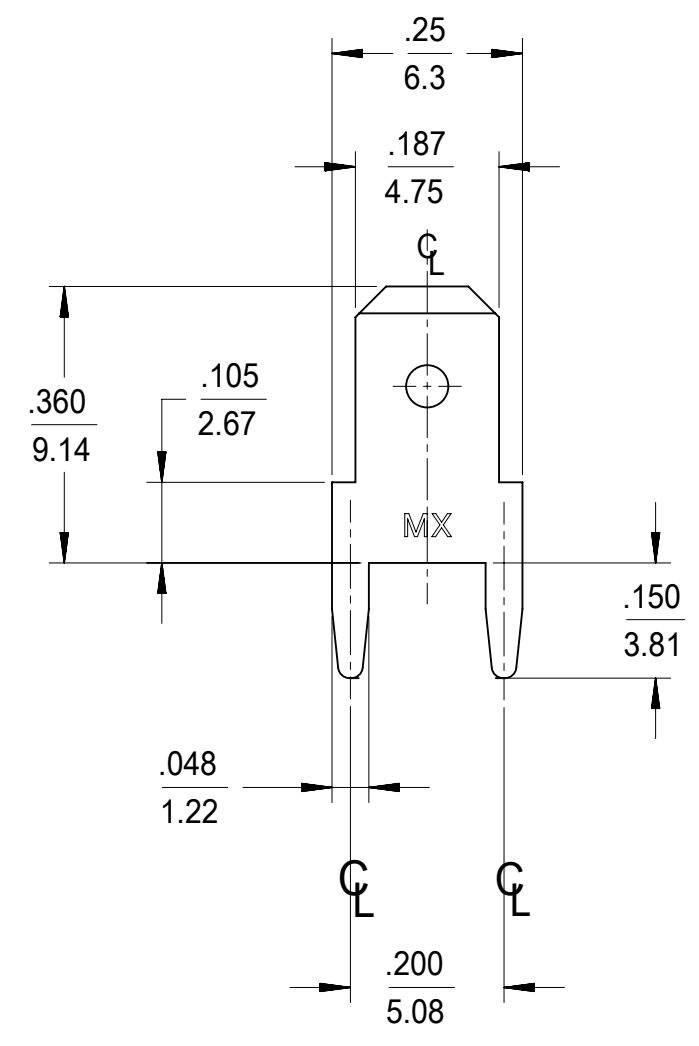
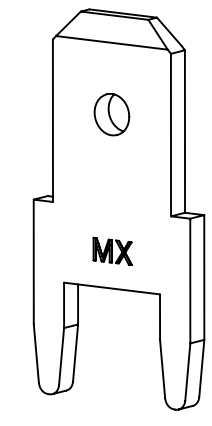


MATERIAL NUMBER	ENGINEERING NUMBER	CARRIER	TAB THICKNESS	LOGO ORIENTATION
197084003	19708-4003	STRIP	.020/0.51	IN
197084013	19708-4013	STRIP	.032/0.81	
197084015	19708-4015	STRIP	.032/0.81	
197084001	19708-4001	LOOSE	.020/0.51	-
197084011	19708-4011	LOOSE	.032/0.81	-



- NOTES:
1. BARE EDGES PERMISSIBLE AT CARRIER CUT OFF.
 2. MATERIAL: BRASS C26000
 3. MATERIAL THICKNESS: SEE CHART
 4. TAB CONFORMS TO NEMA SPECIFICATIONS.
 5. ALL DIMENSIONS AND NOTES REFERENCE UNLESS OTHERWISE NOTED.
 6. PLATING: MATTE TIN, 150µIN/3.81µmm MINIMUM THICKNESS OVER NICKEL 50µIN/1.25µmm MINIMUM THICKNESS.
 7. REF: 15,000 PARTS TOTAL PER REEL. THE REEL HAS (J2) 14" DIAMETER REEL WITH A 1.25" DIAMETER CENTER HOLE.
 8. PART IS RoHS COMPLIANT.

FUNCTIONAL SYMBOLS	THIS DRAWING CONTAINS INFORMATION THAT IS PROPRIETARY TO MOLEX ELECTRONIC TECHNOLOGIES, LLC AND SHOULD NOT BE USED WITHOUT WRITTEN PERMISSION			
	DIMENSION UNITS	SCALE	CURRENT REV DESC: MIGRATE TO NX. NOTE 7: 15,000 MIN PARTS PER REEL WAS 9,000.	
$F_A = 0$	IN/MM	4:1	molex QUICK DISCONNECT PCB MOUNTABLE .187 X .032/.020 TAB PRODUCT CUSTOMER DRAWING	
$F_C = 0$	GENERAL TOLERANCES (UNLESS SPECIFIED)			
$F_P = 0$				
DIVISIONAL SYMBOLS	4 PLACES	±	MM	INCH
	3 PLACES	±	± 0.005	
	2 PLACES	±	0.13	0.01
	1 PLACE	±	0.25	
0 PLACES	±			
	ANGULAR TOL	±	1.0 °	
DRAFT WHERE APPLICABLE MUST REMAIN WITHIN DIMENSIONS		THIRD ANGLE PROJECTION	DRAWING	SERIES
			C-SIZE	19708
DOCUMENT STATUS		P1	RELEASE DATE	2020/09/09 21:28:39
EC NO: 644567		DRWN: DMYRICK	2020/09/01	
CHK'D: JMACNEIL		2020/09/09		
APPR: JMACNEIL		2020/09/09		
INITIAL REVISION:		DRWN: BDEROSS	2000/08/24	
APPR: RDEROSS		2000/08/28		
DOCUMENT NUMBER		DOC TYPE	DOC PART	REVISION
SD-19708-400		PSD	001	J2
MATERIAL NUMBER		CUSTOMER	SHEET NUMBER	
SEE CHART		GENERAL MARKET	1 OF 1	