

Surge protection device - MT-RS485-TTL - 2749398

Please be informed that the data shown in this PDF Document is generated from our Online Catalog. Please find the complete data in the user's documentation. Our General Terms of Use for Downloads are valid (<http://phoenixcontact.com/download>)



Rail-mountable module with surge voltage coarse and fine protection for RS-485 interface, with TTL level, for mounting on NS 35/7.5, housing width: 50 mm

The illustration shows version MT-RS485/S



Key Commercial Data

Packing unit	1 pc
Weight per Piece (excluding packing)	118.19 g
Custom tariff number	85363010
Country of origin	Germany

Technical data

Dimensions

Height	77.5 mm
Width	47.6 mm
Depth	54.9 mm

Ambient conditions

Ambient temperature (operation)	-40 °C ... 80 °C
Degree of protection	IP20

General

Color	black
Mounting type	DIN rail: 35 mm
Type	Rail-mountable module, one-piece
Direction of action	Line-Line & Line-Signal Ground/Shield & Signal Ground/Shield-Earth Ground

Protective circuit

Surge protection device - MT-RS485-TTL - 2749398

Technical data

Protective circuit

IEC test classification	C2
	C3
	D1
VDE requirement class	C2
	C3
	D1
Nominal voltage U_N	5 V DC
Maximum continuous voltage U_C (wire-ground)	5.8 V DC
Nominal current I_N	450 mA (25 °C)
Operating effective current I_C at U_C	≤ 2 mA
Nominal discharge current I_n (8/20) μ s (Core-Core)	10 kA
Nominal discharge current I_n (8/20) μ s (Core-Earth)	10 kA
Max. discharge current I_{max} (8/20) μ s maximum (Core-Core)	10 kA
Max. discharge current I_{max} (8/20) μ s maximum (Core-Earth)	10 kA
Max. discharge current I_{max} (8/20) μ s maximum (Core-GND)	10 kA
Output voltage limitation at 1 kV/ μ s (Core-Core) spike	≤ 9 V
Output voltage limitation at 1 kV/ μ s (Core-Earth) spike	≤ 450 V
Output voltage limitation at 1 kV/ μ s (Core-Core) static	≤ 9 V
Output voltage limitation at 1 kV/ μ s (Core-Earth) static	≤ 450 V
Output voltage limitation at 1 kV/ μ s (Core-GND) static	≤ 9 V
Residual voltage at I_n (conductor-conductor)	≤ 9 V
Residual voltage at I_n (conductor-GND)	≤ 9 V
Voltage protection level U_p (core-core)	≤ 9 V
Voltage protection level U_p (core-ground)	≤ 450 V
Voltage protection level U_p (core-GND)	≤ 9 V
Response time t_A (Core-Core)	1 ns
Response time t_A (Core-Earth)	≤ 1 ns
	≤ 100 ns
Input attenuation aE, sym.	typ. 0.1 dB (up to 40 kHz 150 Ω system)
	typ. 0.1 dB (Up to 10 kHz)
Input attenuation aE, asym.	0.5 dB (up to 0.1 MHz 50 Ω system)
	0.1 dB (up to 10 kHz 600 Ω system)
Cut-off frequency f_g (3 dB), asym. (GND) in 50 Ohm system	600 kHz
Cut-off frequency f_g (3 dB), asym. (GND) in 150 Ohm system	200 kHz
Cut-off frequency f_g (3 dB), asym. (GND) in 600 Ohm system	50 kHz
Resistance in series	4.4 Ω

Surge protection device - MT-RS485-TTL - 2749398

Technical data

Connection data

Connection method	Screw connection
Connection type IN	Screw terminal blocks
Connection type OUT	Screw terminal blocks
Screw thread	M3
Stripping length	8 mm
Conductor cross section flexible	0.2 mm ² ... 2.5 mm ²
Conductor cross section solid	0.2 mm ² ... 4 mm ²
Conductor cross section AWG	24 ... 12

Standards and Regulations

Standards/regulations	Draft IEC 64644-1
	E VDE 0845-3-1

Classifications

eCl@ss

eCl@ss 4.0	27140201
eCl@ss 4.1	27130801
eCl@ss 5.0	27130801
eCl@ss 5.1	27130801
eCl@ss 6.0	27130807
eCl@ss 7.0	27130807
eCl@ss 8.0	27130807
eCl@ss 9.0	27130807

ETIM

ETIM 2.0	EC000943
ETIM 3.0	EC000943
ETIM 4.0	EC000943
ETIM 5.0	EC000943

UNSPSC

UNSPSC 6.01	30212010
UNSPSC 7.0901	39121610
UNSPSC 11	39121610
UNSPSC 12.01	39121610
UNSPSC 13.2	39121620

Surge protection device - MT-RS485-TTL - 2749398

Approvals

Approvals

Approvals

EAC / EAC

Ex Approvals

Approvals submitted

Approval details

EAC

EAC

Accessories

Additional products

Shield connection - SSA 3-6 - 2839295



shield fast connections for conductor diameter 3 - 6 mm. Potential connection cable: 200 mm, black

Shield connection - SSA 5-10 - 2839512

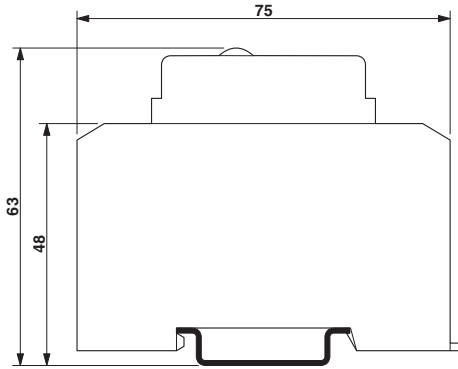


Shield fast connection for conductor diameters 5 - 10 mm. Potential connection cable: 200 mm, black

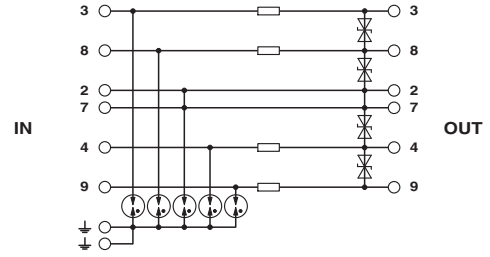
Drawings

Surge protection device - MT-RS485-TTL - 2749398

Dimensional drawing

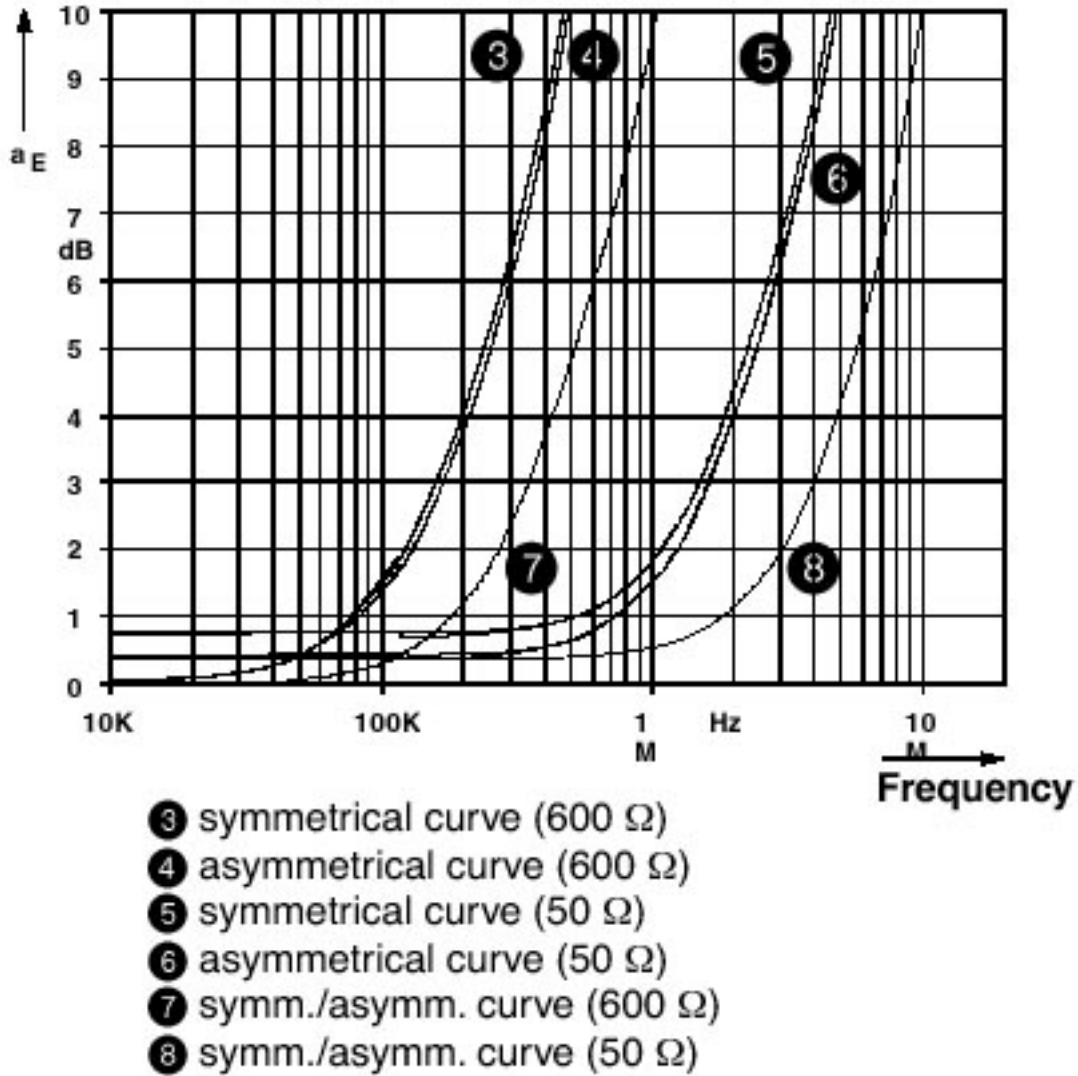


Circuit diagram



Surge protection device - MT-RS485-TTL - 2749398

Diagram



Characteristic attenuation curve

Mouser Electronics

Authorized Distributor

Click to View Pricing, Inventory, Delivery & Lifecycle Information:

[Phoenix Contact:](#)

[2749398](#)