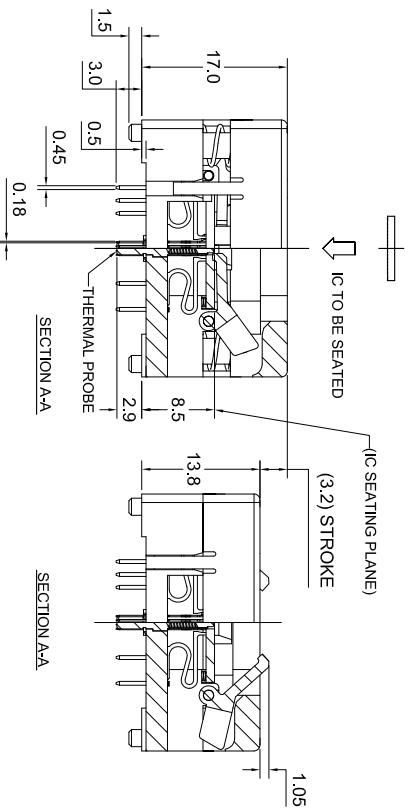
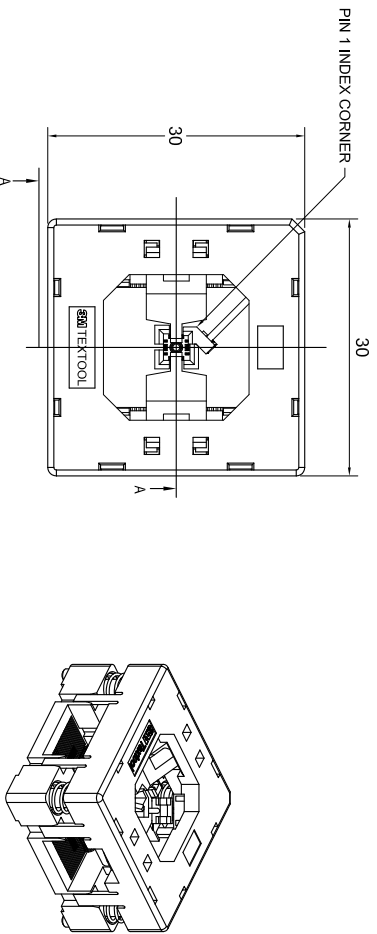


3M™ TEXTOOL™ QFN TEST AND BURN-IN SOCKET



NOTES:

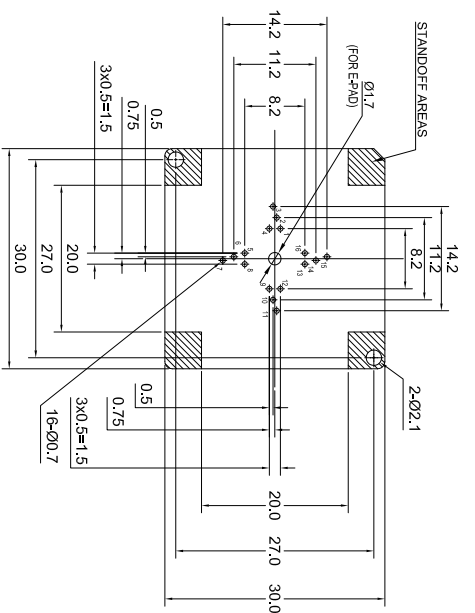
1. MATERIALS:

SPRINGS	SS
CONTACTS	Be Cu
IC GUIDES	PES
PRESSURE PAD	PES
COVER	PPS or equiv.
BASE	PES

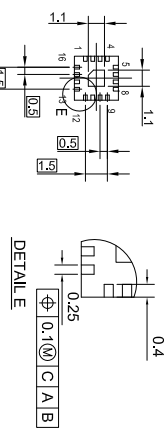
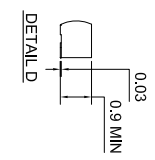
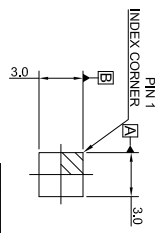
2. SEE THE REGULATORY INFORMATION APPENDIX (RIA) IN THE "RoHS COMPLIANCE" SECTION WWW.3MCONNECTOR.COM FOR COMPLIANCE INFORMATION (RIA E1 & C1 APPLY).

3. FOR PRODUCT SPECIFICATIONS AND WARRANTY INFORMATION SEE: WWW.3MCONNECTOR.COM PN 216-5205-01

DESIGN REFERENCE: NEXT ASSEMBLY	
DATE: 4/2/12	ISSUE DATE AND DESCRIPTION: MFG
DRAWN: L SCHMIDT	DATE: 4/2/12
CHKD: [blank]	DATE: [blank]
DIVISION CODE: [blank]	
DO NOT SCALE DRAWING	SCALE: EXCEPT AS NOTED
TRIMD ANGLE PROJECTION	INCHES: 1
FRITZ PER ASME Y14.5 - 1994	MILLIMETERS: 1
MAX SURFACE ROUGHNESS	INCHES: 0.4
CALL SURFACES	MILLIMETERS: 0.1
125 UNMARKED ONLY	ANGLES: 1
3M QFN TEST SOCKET 0.5mm 16 POS, EVEN ROW, 3X3 PKG WITH TP	
CAGE NUMBER: 78-5100-2518-8	REVISION: A
MODEL: TEXTTOOL - QFN	DEF. LISTS: YES <input checked="" type="checkbox"/> NO <input type="checkbox"/> SH: 1 OF 2



FOOTPRINT AS VIEWED LOOKING DOWN FROM TOP OF SOCKET



RECOMMENDED IC (REF.)

DESIGN REFERENCE	NEXT ASSEMBLY	REV	ECO	ISSUE DATE AND DESCRIPTION	DRAWN	CHKD
DESIGNER		DFT	L SCHMIDT	DATE	4/2/12	MFG
DATE		DATE		DATE		DATE
DIVISION	DIVISION CODE	TOLERANCES EXCEPT AS NOTED	<p>3M 3M COPYRIGHT © 2012. This document is the property of the 3M Company and may not be reproduced without 3M written permission or used for other than 3M authorized purposes.</p>			
DO NOT SCALE DRAWING	SCALE 5	INCHES	<p>QFN TEST SOCKET 0.5mm 16 POS, EVEN ROW, 3X3 PKG WITH TTP</p>			
THIRD ANGLE PROJECTION	NUMBERS PER ASME Y14.5-1994	MILLIMETERS	CASE NUMBER	DRAWING NO.	DEF	REV
MAX SURFACE ROUGHNESS	125	0.001	78-5100-2518-8	78-5100-2518-8	YES	A
CALL SURFACES	125	0.001	TEXT TOOL - QFN	LISTS	NO	2 OF 2
MARKED ONLY		0.001			NO	

Mouser Electronics

Authorized Distributor

Click to View Pricing, Inventory, Delivery & Lifecycle Information:

[3M:](#)

[216-5205-01](#)