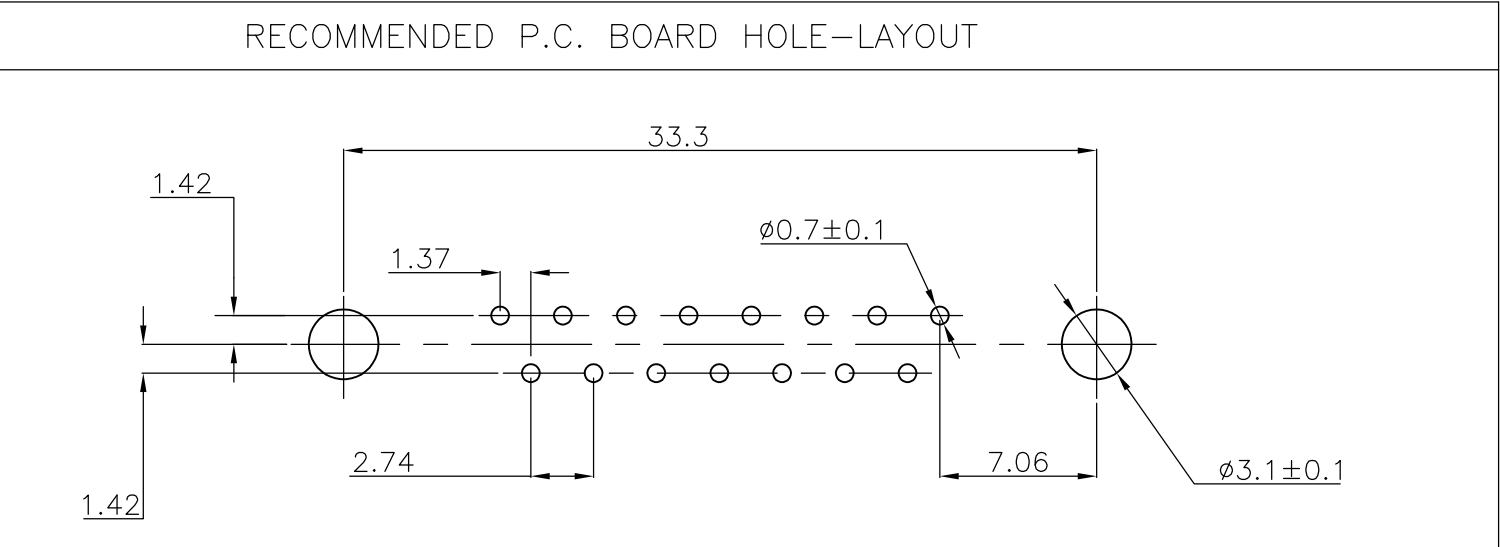
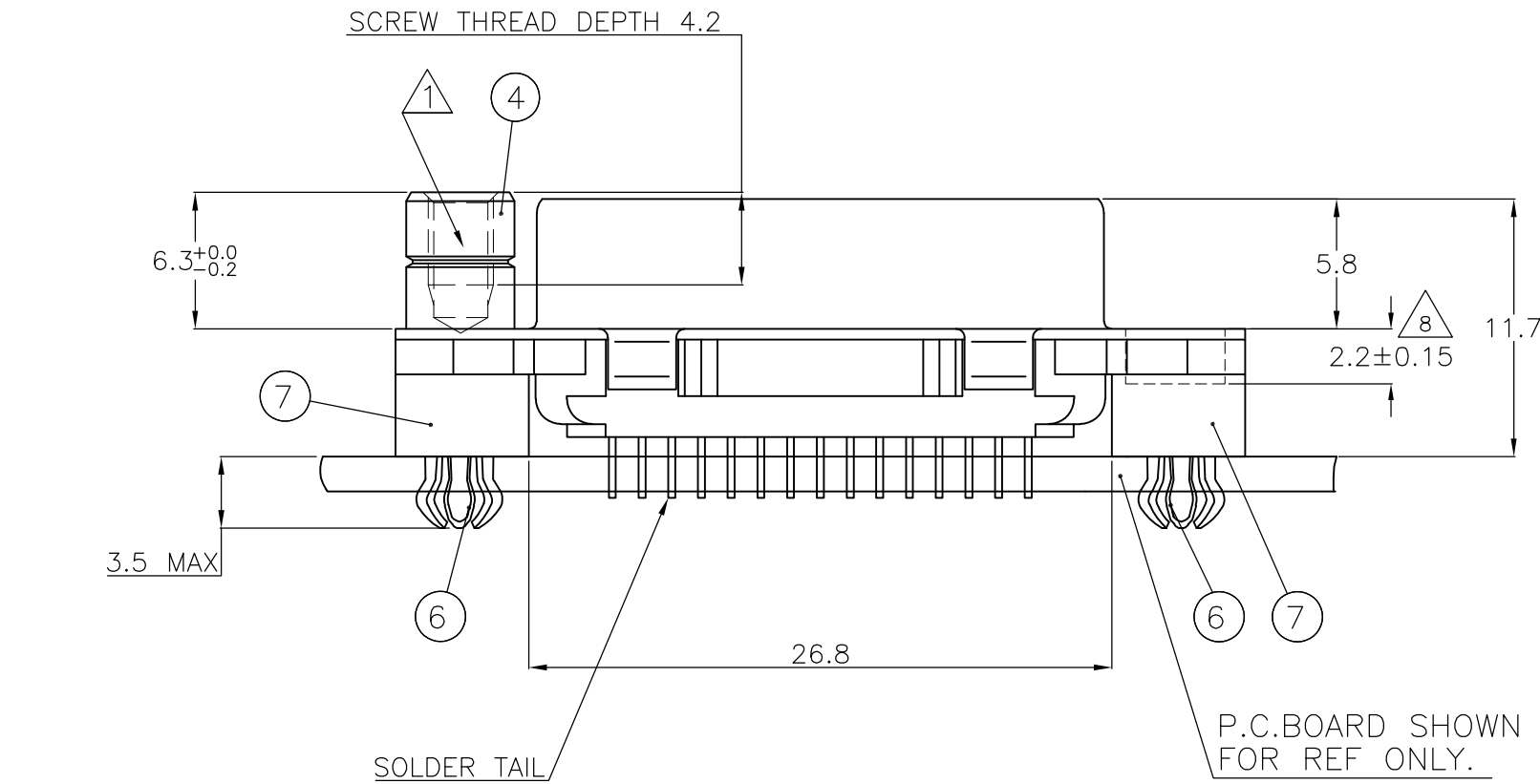
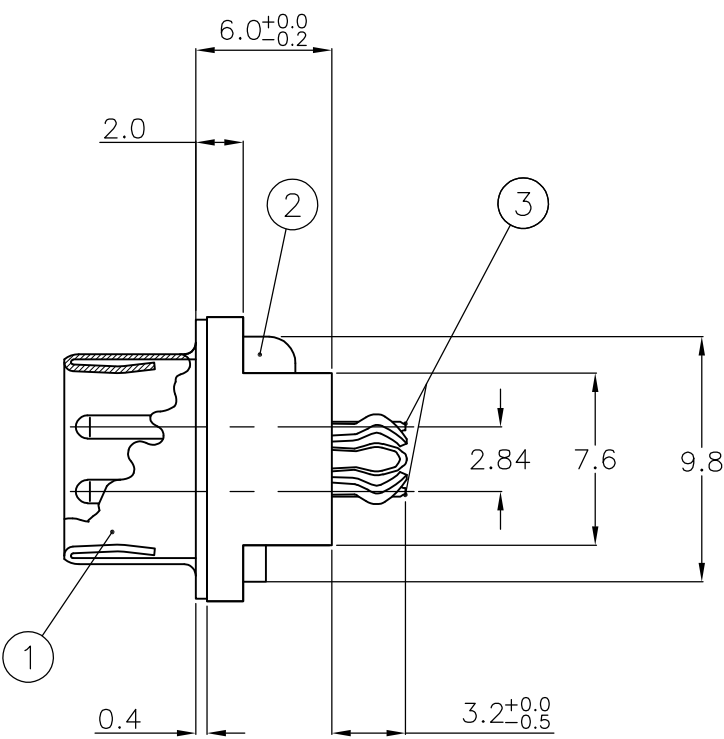
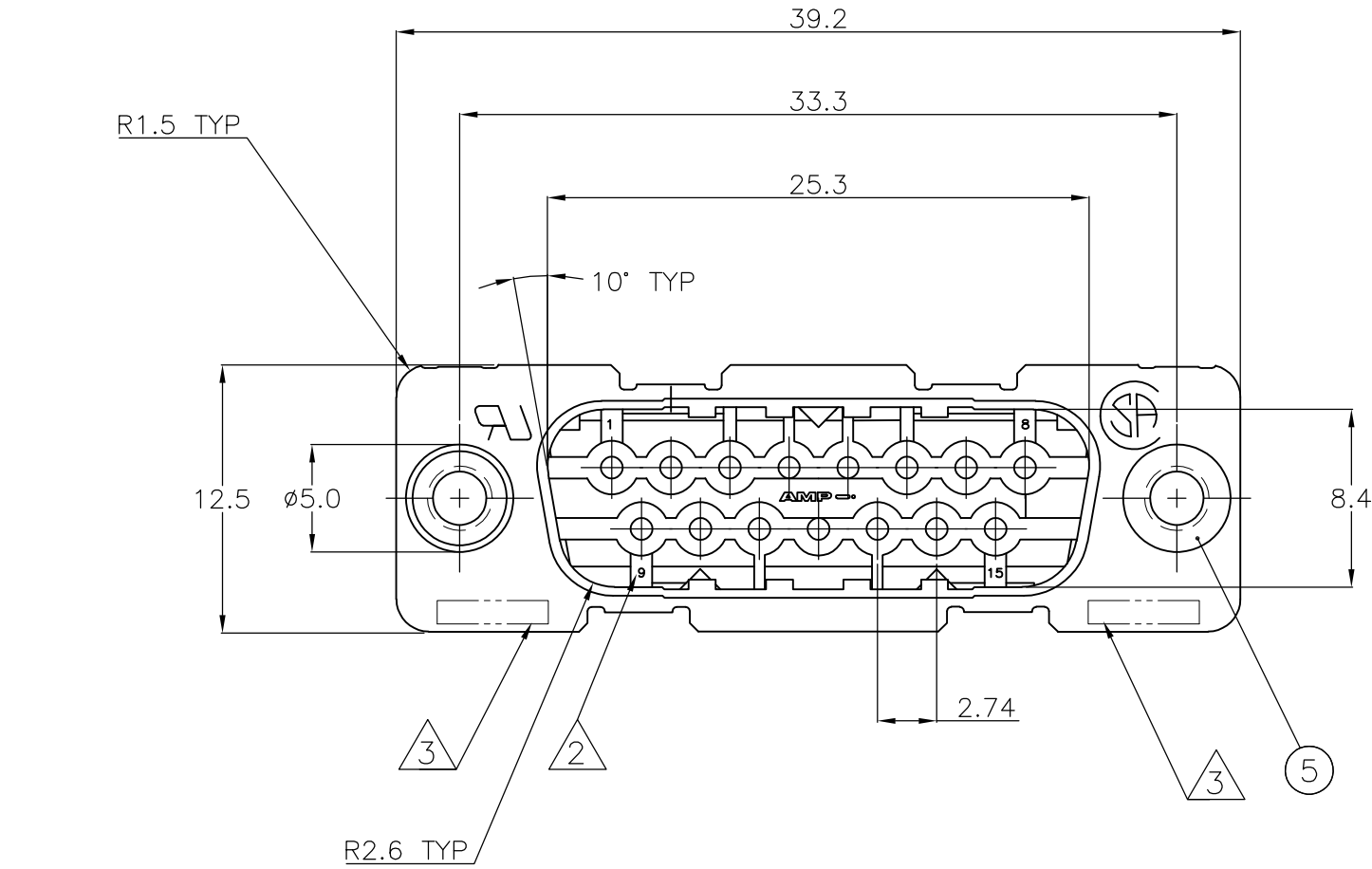


REVISIONS					
P	LTR	DESCRIPTION	DATE	DWN	APVD
	H	REVISED PER ECO-17-010826	10AUG2017	AP	DG



ACCESSORIES	5	BUSHING WITH THROUGH HOLE $\varnothing 3.1$								2								
	5	BUSHING WITH THREAD 4-40 UNC									2							
	5	BUSHING WITH THREAD M3										2						
	4	FEMALE SCREWLOCK WITH THREAD 4-40 UNC											2					
	4	FEMALE SCREWLOCK WITH THREAD M3												2				
	6	BOARDLOCK																
	ITEM NO	DESCRIPTION OF ACCESSORY																

- 1

GROOVE INDICATES VERSION WITH 4-40 UNC INNER THREAD; WITHOUT GROOVE INDICATES VERSION WITH M3 INNER THREAD.
- 2

CAVITY IDENTIFICATION AT FRONT SIDE ONLY.
- 3

PART NUMBER AND DATE CODE.
- 4

WHEN BOARDLOCKS ARE USED, CONNECTOR CAN BE USED FOR PCB THICKNESS OF 1.6 ONLY.
- 5

SHELL HAS 2x4 GROUNDING SPRINGS; PITCH IS 3.6.
- 6

AIR AND CREEPAGE DISTANCES ACCORDING TO DIN 41652.
- 7

CONTACT FINISH: GOLD FLASH OVER PALLADIUM-NICKEL PLATE OR GOLD PLATE ON THE MATING SURFACES, TIN PLATE ON THE SOLDER-TAILS, NICKEL UNDERPLATE ON THE ENTIRE CONTACT. MATING SURFACE FINISH MEETS LEVEL 2 PER DIM 41652.
- 8

4-40/M3 THREAD DEPTH

ITEM NO/MATERIAL:	
1 SHELL	: BRIGHT TIN PLATED STEEL
2 HOUSING	: GLASS FILLED POLYESTER, COLOR : BLACK
3 CONTACTS	: PHOSPHOR BRONZE (PLATING : SEE NOTES)
4 FEMALE SCREWLOCK	: TIN PLATED STEEL (INNER THREAD 4-40 UNC OR M3)
5 BUSHING	: TIN PLATED STEEL (INNER THREAD 4-40 UNC OR M3 OR $\varnothing 3.1$ THROUGH HOLE)
6 BOARDLOCK	: TIN PLATED PHOSPHOR BRONZE
7 STAND-OFF	: GLASS FILLED NYLON COLOR : BLACK

THIS DRAWING IS A CONTROLLED DOCUMENT. DIMENSIONING AND TOLERANCING PER ASME Y14.5M-2009		DWN J.V. LIEMPT 03JUL97	TE Connectivity	
DIMENSIONS: mm		CHK C. SOUISA 09SEP97		
TOLERANCES UNLESS OTHERWISE SPECIFIED:		APVD W. SOOMERS 09SEP97	NAME	
0 PLC ± -		PRODUCT SPEC	HDP-20 SIZE 2 VERTICAL+ PLUG HEADER WITH SOLDER CONTACTS	
1 PLC ± 0.3		APPLICATION SPEC		
2 PLC ± 0.15		WEIGHT 0	SIZE A2	CAGE CODE 00779
3 PLC ± -		CUSTOMER DRAWING	DRAWING NO C=338310	RESTRICTED TO -
4 PLC ± -			SCALE NTS	SHEET 1 OF 1
ANGLES ± -				REV H
FINISH -				

# Mouser Electronics

Authorized Distributor

Click to View Pricing, Inventory, Delivery & Lifecycle Information:

[TE Connectivity:](#)

[6-338310-2](#)