

This drawing involves proprietary design rights of Tyco Electronics Corporation, and all design, manufacture, reproduction, use and sale rights regarding the same are expressly reserved. It is submitted for a specific purpose and the recipient by accepting this drawing, assumes custody and control and agrees to take reasonable precautions; (a) that this drawing will not be copied and reproduced, in whole or in part, or its contents revealed in any manner, or to any person except to meet the purpose for which it was delivered and (b) that any special features peculiar to this design will not be incorporated in other projects without the expressed written permission of Tyco Electronics Corporation.

REVISIONS			
EC	REV	DESCRIPTION	DATE
CPR	A	NEW RELEASE	10/12/05

NOTES: UNLESS OTHERWISE SPECIFIED.

1. PART NUMBER CHANGES AND OR DESIGN CHANGES AFFECTING ITEM INTERCHANGEABILITY REQUIRE PRIOR ELCON APPROVAL AND AUTHORIZATION BY REVISION TO THIS DRAWING.
2. MATERIALS:

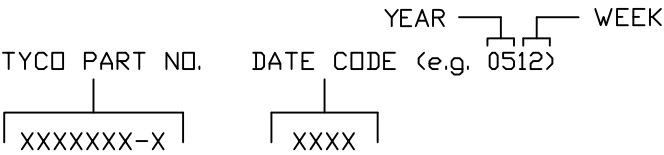
INSULATORS: THERMOPLASTIC, GLASS REINFORCED, COLOR BLACK. UL94V-0 FLAMMABILITY RATED.

POWER CONTACTS: PHOSPHOR BRONZE ALLOY, COPPER ALLOY.

CROWN BANDS: BERYLLIUM COPPER ALLOY.
3. FINISHES:

CONTACTS: GOLD PLATED PER MIL-G-45204 TYPE II, CLASS 0, .000030" MIN. THK, OVER NICKEL PER QQ-N-290, CLASS 2, .000040" MIN. THICKNESS.

TERMINALS: TIN PLATED, MATTE FINISH .000100" MIN. THICKNESS.
4. ITEMS PROVIDED TO THIS SPECIFICATION TO BE PERMANENTLY IDENTIFIED PER THE FOLLOWING IDENTIFIER:



5. MODULE INFORMATION

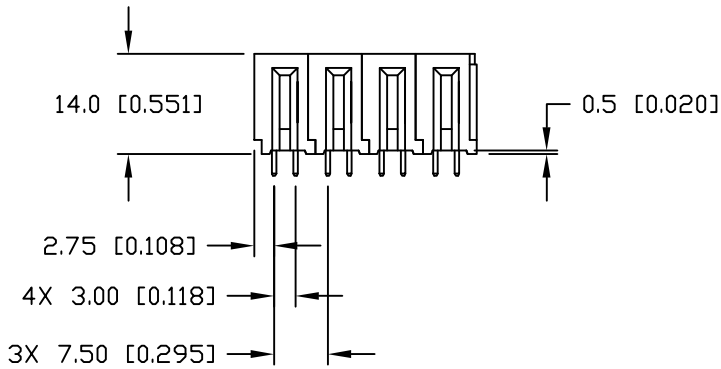
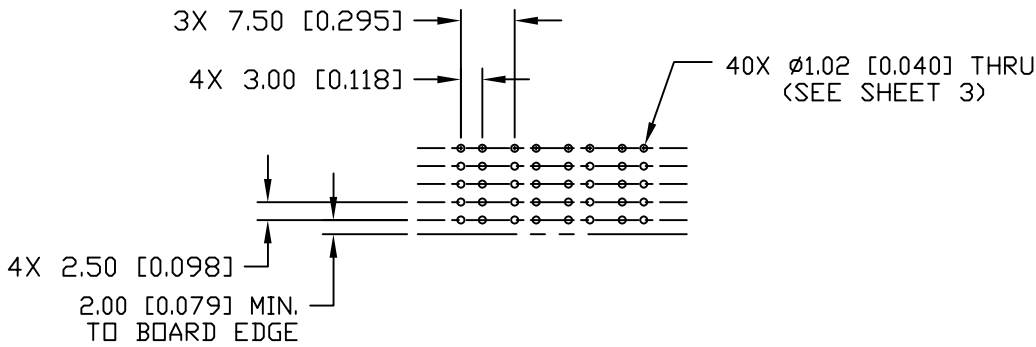
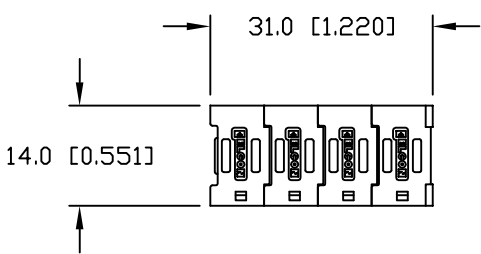
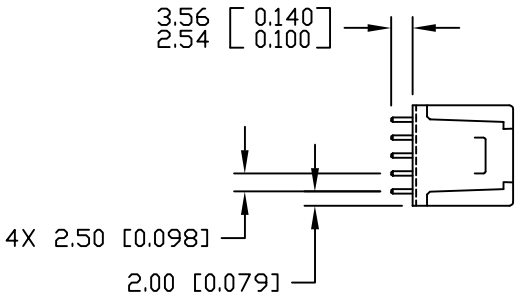
CONNECTOR	TYCO PART NUMBER	CATALOG MODULE #	QTY	SIZE NO.	CONTACT QTY	MATING PIN	MAX. CURRENT (PER CONTACT)	CONTACT SPACING	VOLTAGE RATING*
SOCKET	6651899-1	FP1104	4	8	4	1.25 X 7.00 [.049 X .276]	35 AMPERES	7.50 [1.2953]	250 VOLTS

*IAW IEC-950

<div><div>← MM INCH → OR MM [INCH]</div><div></div><div>THIRD ANGLE PROJECTION</div><div>UNLESS OTHERWISE SPECIFIED DIMENSIONS ARE IN METRIC [INCHES]</div><div>TOLERANCES</div><div>ANGLES ± .5°</div><div>DECIMALS</div><div>.XX ± .25 [0.010]</div><div>.X ± .5 [0.020]</div></div>	DRAWN R. F. A.	DATE 10/12/05	<div><div>tyco Electronics</div><div>Tyco Electronics Corporation Menlo Park, Ca 94025</div><div>ELCON</div></div> <div>TITLE</div> <div>CONNECTOR, SOCKET, RIGHT ANGLE SHORT SOLDER TAILS, FLATPAQ PN 6651899-1</div>		
	CHECKED				
	APPROVED				
	APPROVED D. CHAU	11/23/05	SIZE B	DWG NUMBER C = 6651899	REV. A
	DCA APPROVED M. ALIM	11/23/05			
ACAD FILE NUMBER C6651899A.DWG			DWG SCALE 1=1	SH 1 OF 3	

This drawing involves proprietary design rights of Tyco Electronics Corporation, and all design, manufacture, reproduction, use and sale rights regarding the same are expressly reserved. It is submitted for a specific purpose and the recipient by accepting this drawing, assumes custody and control and agrees to take reasonable precautions; (a) that this drawing will not be copied and reproduced, in whole or in part, or its contents revealed in any manner, or to any person except to meet the purpose for which it was delivered and (b) that any special features peculiar to this design will not be incorporated in other projects without the expressed written permission of Tyco Electronics Corporation.

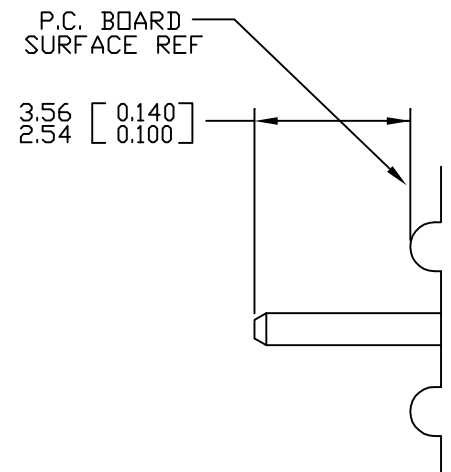
REVISIONS			
EC	REV	DESCRIPTION	DATE
		SEE SHEET 1	



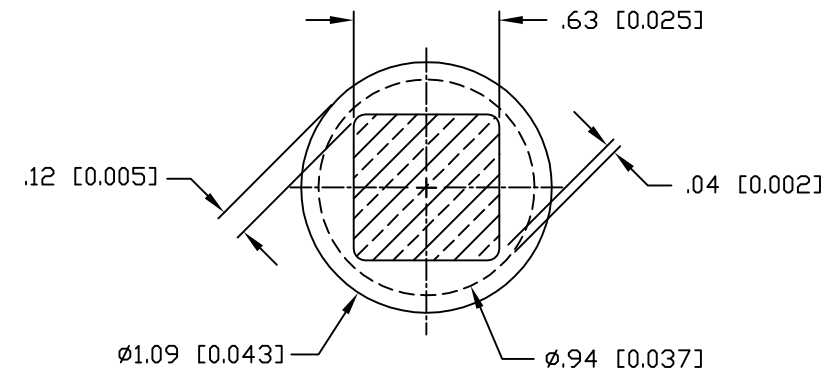
PRINTED CIRCUIT LAYOUT

<div>MM INCH</div> <div>OR MM [INCH]</div> <div>THIRD ANGLE PROJECTION</div> <div>UNLESS OTHERWISE SPECIFIED DIMENSIONS ARE IN METRIC [INCHES]</div> <div>TOLERANCES</div> <div>ANGLES ± .5°</div> <div>DECIMALS</div> <div>.XX ± .25 [0.010]</div> <div>.X ± .5 [0.020]</div>	DRAWN R. F. A.	DATE 10/12/05	<div>tyco Tyco Electronics Corporation Electronics Menlo Park, Ca 94025</div> <div>ELCON</div> <div>TITLE</div> <div>CONNECTOR, SOCKET, RIGHT ANGLE SHORT SOLDER TAILS, FLATPAQ PN 6651899-1</div>	
	CHECKED			
	APPROVED			
	APPROVED D. CHAU	11/23/05	SIZE B	DWG NUMBER C = 6651899
	DCA APPROVED M. ALIM	11/23/05	REV. A	
ACAD FILE NUMBER C6651899A.DWG			DWG SCALE 1=1	SH 2 OF 3

This drawing involves proprietary design rights of Tyco Electronics Corporation, and all design, manufacture, reproduction, use and sale rights regarding the same are expressly reserved. It is submitted for a specific purpose and the recipient by accepting this drawing, assumes custody and control and agrees to take reasonable precautions; (a) that this drawing will not be copied and reproduced, in whole or in part, or its contents revealed in any manner, or to any person except to meet the purpose for which it was delivered and (b) that any special features peculiar to this design will not be incorporated in other projects without the expressed written permission of Tyco Electronics Corporation.

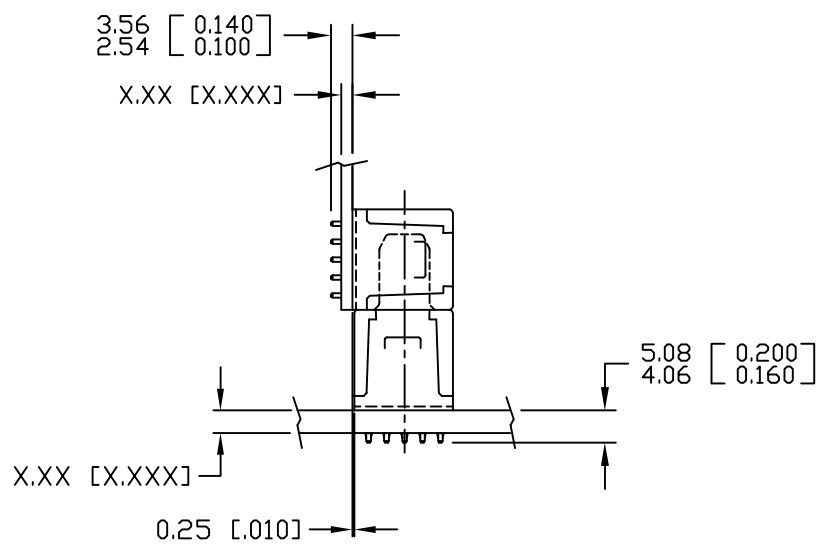


SOLDER PIN DETAIL

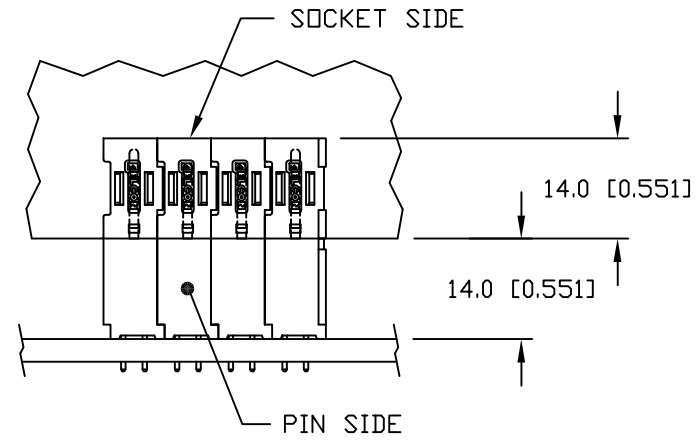


SOLDER TERMINATION AREA
RECOMMENDED PRINTED CIRCUIT HOLE

FINISHED HOLE: Ø1.02 [0.040] ±.08 [0.003]
DRILLED HOLE: Ø1.15 [0.0453] ±.013 [0.0005]
COPPER PLATE: .025 [0.0010] MINIMUM (PER SURFACE)
TIN PLATE: .008 [0.0003] MINIMUM (PER SURFACE)



MATED CONDITION



<div>MM OR MM [INCH]</div> <div></div> <div>THIRD ANGLE PROJECTION</div> <div>UNLESS OTHERWISE SPECIFIED DIMENSIONS ARE IN METRIC [INCHES]</div> <div>TOLERANCES</div> <div>ANGLES ± .5°</div> <div>DECIMALS</div> <div>.XX ± .25 [0.010]</div> <div>.X ± .5 [0.020]</div>	DRAWN R. F. A.	DATE 10/12/05	<div> Tyco Electronics Corporation Menlo Park, Ca 94025</div> <div></div>		
	CHECKED		TITLE		
	APPROVED		USER INFORMATION SOLDER TAIL TERMINATION AND MATED CONDITION		
	APPROVED D. CHAU	11/23/05	SIZE B	DWG NUMBER C = 6651899	REV. A
M. ALIM		11/23/05			
ACAD FILE NUMBER C6651899A.DWG		DWG SCALE 1=1		SH 3 OF 3	

Mouser Electronics

Authorized Distributor

Click to View Pricing, Inventory, Delivery & Lifecycle Information:

[TE Connectivity:](#)

[6651899-1](#)