

REFERENCE SPECIFICATIONS

-NFC 93425 (in compliance with HE 508)

PHYSICAL CHARACTERISTICS

-INSULATOR MATERIAL: THERMOSET UL94V0

-CONTACT MATERIAL: BRASS
GOLD OVER NICKEL

-ACCESSORIES: STEEL FOR METAL BRACKETS
Cadmium plated, yellow passivation
THERMOPLASTIC UL94V0 FOR PLASTIC BRACKETS
BRASS FOR OTHERS ACCESSORIES
Cadmium plated, yellow passivation

-SHELLS: STEEL
Cadmium plated, yellow passivation

ELECTRICAL CHARACTERISTICS

-NOMINAL CURRENT: 7.5A

-CONTACT RESISTANCE: <=7.3 m Ohms

-CONTACT/CONTACT : >=1000 V

-CONTACT/GROUND : >=1200 V

-INSULATION RESISTANCE: >=5000 MOhms

ENVIRONMENTAL CHARACTERISTICS

- CLIMATIC CATEGORY: 55/155/56

TEMPERATURE RANGE -55°C TO +155°C

DAMP HEAT STEADY STATE 56 DAYS

SALT SPRAY 48 HOURS

MECHANICAL CHARACTERISTICS

RETENTION AGAINST TORQUE: -Threaded insert:0.7 N.m min

-Female screw:0.5 N.m min

Series

DBML25P500MN

Shell size: **E A B C D**
(see sheet 3)

Front accessory definition
(see sheet 2)

Blank :without accessory
L :threaded insert M3
O :threaded insert UNC 4-40
V :female screw UNC 4-40

Layout of contacts (see sheet 3)

9,15,25,37,50

Contacts

P :Pin

Termination type

5 Right angle/Europe standard

Plating

00 Right angle 500 matings/unmatings

43 Right angle 500 matings/unmatings
for harsh environment

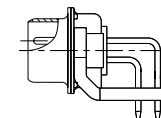
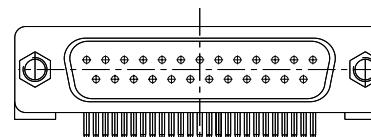
PCB accessories definition(see sheet 2)

Blank :Plastic brackets

C :Without brackets




M :Metal brackets

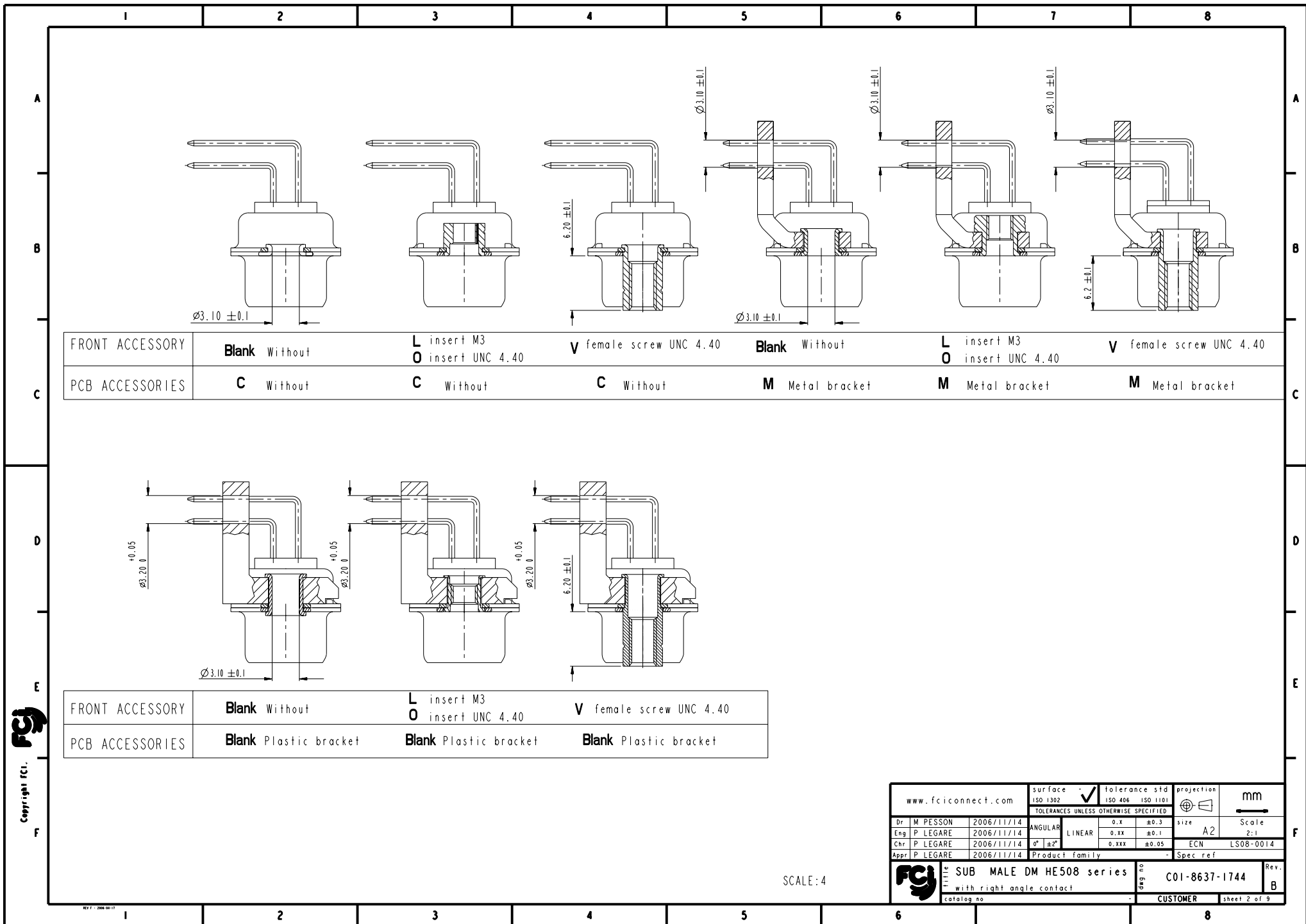
Obligatory for HE508



25 WAY FOR EXAMPLE

rev	acc no	dr	date
A	3506-0174 MPE		2006/11/14
B	3508-0014		2008/01/17
-	-	-	-
-	-	-	-
-	-	-	-
-	-	-	-
-	-	-	-
-	-	-	-
-	-	-	-

www.fciconnect.com				surface <input checked="" type="checkbox"/> tolerance std			projection		mm		
				ISO 1302 150 406 150 1101							
				TOLERANCES UNLESS OTHERWISE SPECIFIED							
Dr	M PESSON		2006/11/14	ANGULAR		0.X	±0.3	size	A2		
Eng	P. LEGARE		2006/11/14	LINEAR		0.XX	±0.1	Scale	2:1		
Chr	P. LEGARE		2006/11/14	0° ±2°		0.XXX	±0.05	ECN	LS08-0014		
Appr	P. LEGARE		2006/11/14	Product family			-	Spec ref			
				SUB MALE DM HE508 series			C01-8637-1744		Rev. B		
				with right angle contact							
catalog no.				-			CUSTOMER		sheet 1 of 9		



PART NUMBER	FRONT ACCESSORY	PCB ACCESSORY
D*MxxP500CN	without	without
D*MLxxP500CN	insert M3	without
D*MOxxP500CN	insert UNC 4.40	without
D*MVxxP500CN	female screw UNC 4.40	without
D*MxxP500MN	without	Metal bracket
D*MLxxP500MN	insert M3	Metal bracket
D*MOxxP500MN	insert UNC 4.40	Metal bracket
D*MVxxP500MN	female screw UNC 4.40	Metal bracket
D*MxxP500N	without	Plastic bracket
D*MLxxP500N	insert M3	Plastic bracket
D*MOxxP500N	insert UNC 4.40	Plastic bracket
D*MVxxP500N	female screw UNC 4.40	Plastic bracket

shell size	Contact number
XX	
E	09
A	15
B	25
C	37
D	50

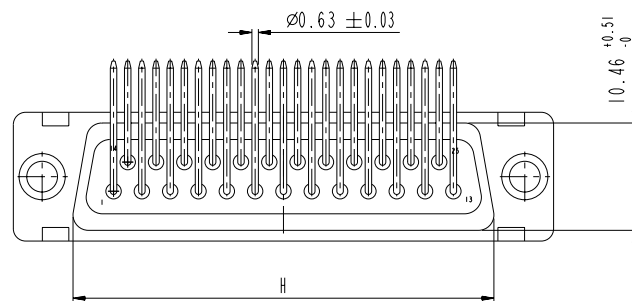
PART NUMBER	FRONT ACCESSORY	PCB ACCESSORY
D*MxxP543CN	without	without
D*MLxxP543CN	insert M3	without
D*MOxxP543CN	insert UNC 4.40	without
D*MVxxP543CN	female screw UNC 4.40	without
D*MxxP543MN	without	Metal bracket
D*MLxxP543MN	insert M3	Metal bracket
D*MOxxP543MN	insert UNC 4.40	Metal bracket
D*MVxxP543MN	female screw UNC 4.40	Metal bracket
D*MxxP543N	without	Plastic bracket
D*MLxxP543N	insert M3	Plastic bracket
D*MOxxP543N	insert UNC 4.40	Plastic bracket
D*MVxxP543N	female screw UNC 4.40	Plastic bracket

CROSS REFERENCES HE501 and FCI

HE508 P/N	FCI P/N	FRONT ACCESSORY	PCB ACCESSORY
HE508PxxVP6	D*MxxP500N	without	Plastic bracket
HE508MxxVP6	D*MxxP500MN	without	Metal bracket

www.fciconnect.com		surface - <input checked="" type="checkbox"/> ISO 1302	tolerance std <input checked="" type="checkbox"/> ISO 406 <input type="checkbox"/> ISO 1101	projection	mm
		TOLERANCES UNLESS OTHERWISE SPECIFIED			
Dr	M PESSON	2006/11/14	ANGULAR	0.X	±0.3
Eng	P LEGARE	2006/11/14	LINEAR	0.XX	±0.1
Chr	P LEGARE	2006/11/14	0° ±2°	0.XXX	±0.05
Appr	P LEGARE	2006/11/14	Product family	- Spec ref	
		SUB MALE DM HE508 series		deg no	C01-8637-1744
		with right angle contact		Rev.	B
catalog no		CUSTOMER		sheet 3 of 9	

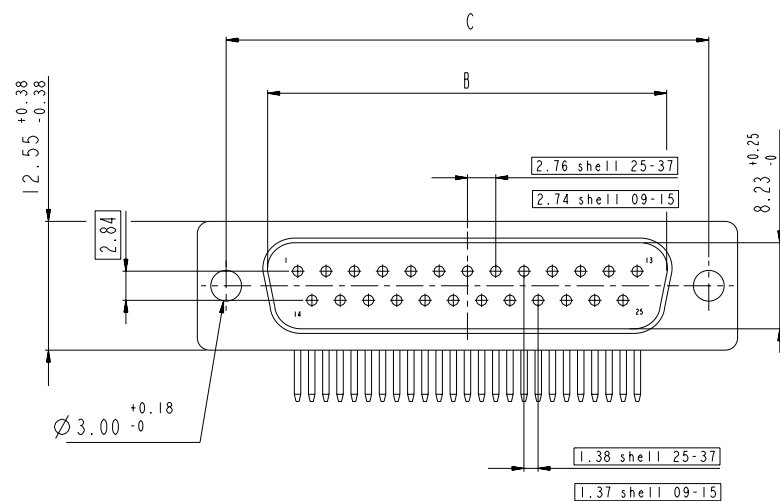
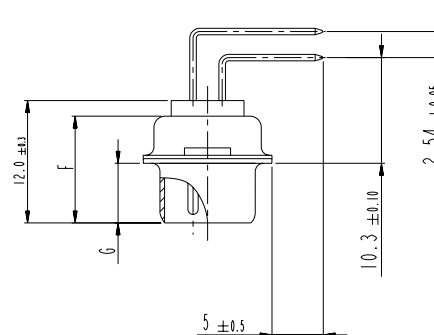
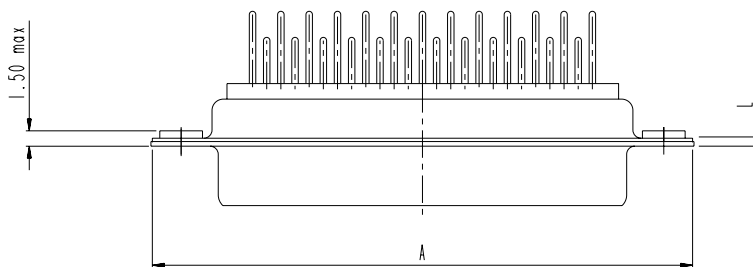
Copyright FCI



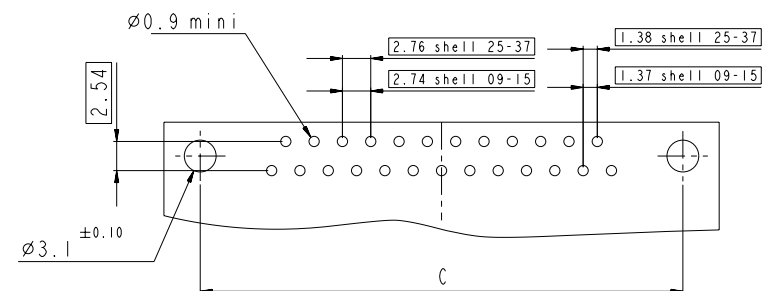
DIMENSION FOR SHELL E,A,B,C WITHOUT BRACKET

Dimensions are in millimeters

Shell size	Number of contacts	A ^{+0.76} ₋₀	B ^{+0.25} ₋₀	C ±0.12	F ^{+0.57} ₋₀	G ^{+0.25} ₋₀	H ^{+0.51} ₋₀	L ^{+0.22} ₋₀
E	09	30.43	16.79	24.99	10.47	5.9 ^{+0.15} ₋₀	19.02	0.80
A	15	38.76	25.12	33.32	10.47	5.9 ^{+0.15} ₋₀	27.25	0.80
B	25	52.65	38.84	47.04	10.43	5.7 ^{+0.25} ₋₀	41.02	0.80
C	37	68.94	55.30	63.50	10.56	5.7 ^{+0.25} ₋₀	57.45	0.90



LAYOUT DIMENSIONS



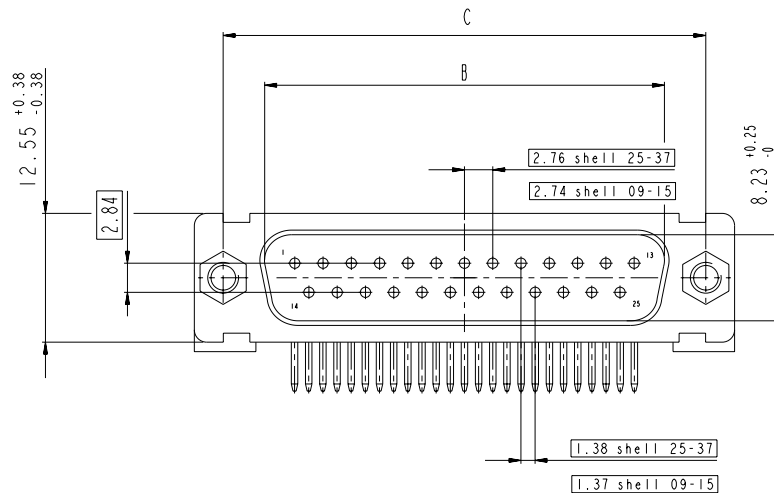
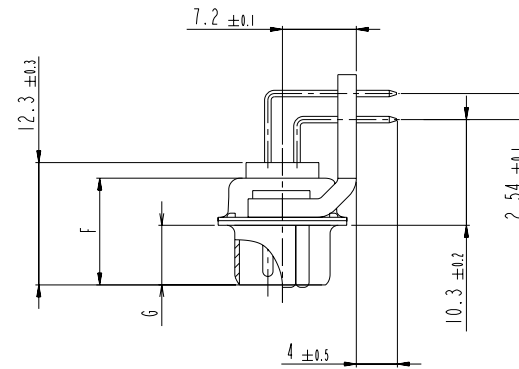
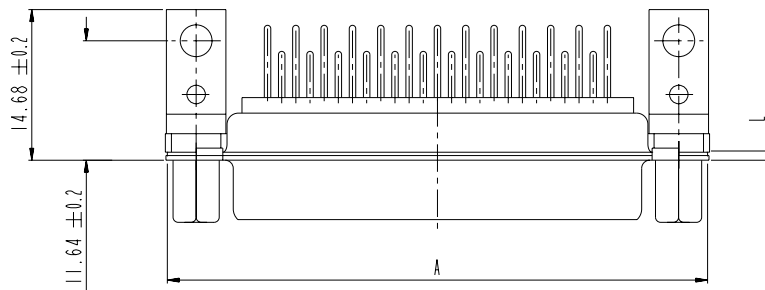
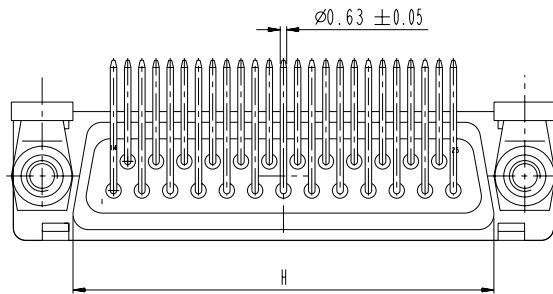
SCALE: 3

www.fciconnect.com		surface -	tolerance std	projection	mm
		ISO 1302	ISO 406	ISO 1101	
		TOLERANCES UNLESS OTHERWISE SPECIFIED			
Dr	M PESSON	2006/11/14	ANGULAR	0.X	±0.3
Eng	P LEGARE	2006/11/14	LINEAR	0.XX	±0.1
Chr	P LEGARE	2006/11/14	0° ± 2°	0.XXX	±0.05
Appr	P LEGARE	2006/11/14	Product family	Spec ref	
SUB MALE DM HE508 series		C01-8637-1744		Rev. B	
with right angle contact		CUSTOMER		sheet 4 of 9	

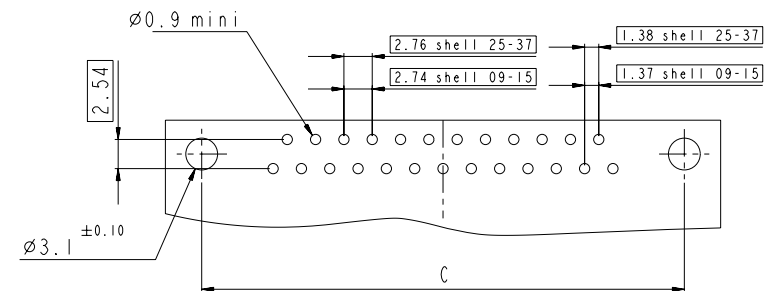
DIMENSION FOR SHELL E,A,B,C WITH METAL BRACKET

Dimensions are in millimeters

Shell size	Number of contacts	A ^{+0.76} ₋₀	B ^{+0.25} ₋₀	C ± 0.12	F ^{+0.57} ₋₀	G ^{+0.25} ₋₀	H ^{+0.51} ₋₀	L ^{+0.22} ₋₀
E	09	30.43	16.79	24.99	10.47	5.9 ^{+0.15} ₋₀	19.02	0.80
A	15	38.76	25.12	33.32	10.47	5.9 ^{+0.15} ₋₀	27.25	0.80
B	25	52.65	38.84	47.04	10.43	5.7 ^{+0.25} ₋₀	41.02	0.80
C	37	68.94	55.30	63.50	10.56	5.7 ^{+0.25} ₋₀	57.45	0.90



LAYOUT DIMENSIONS



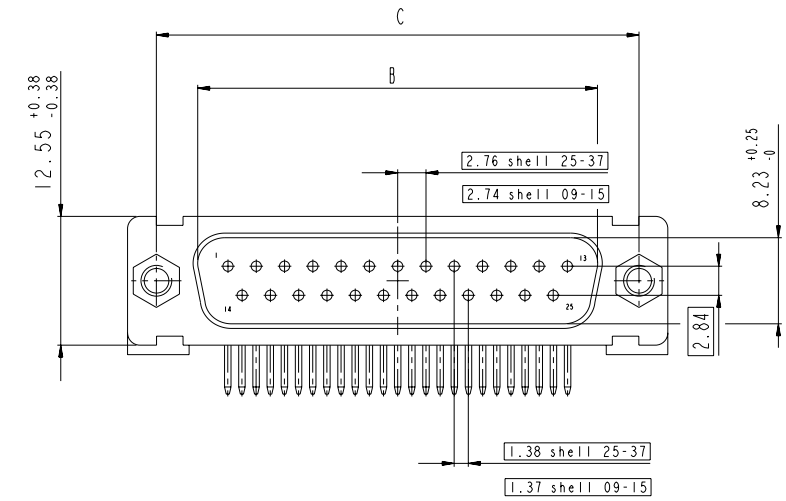
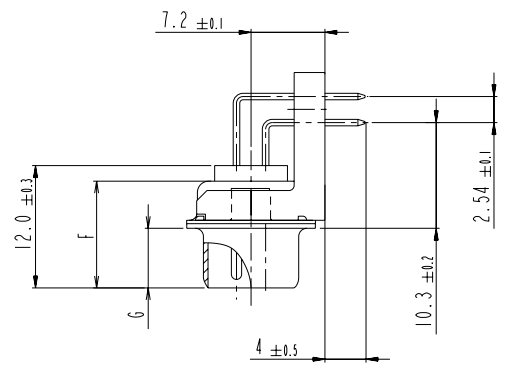
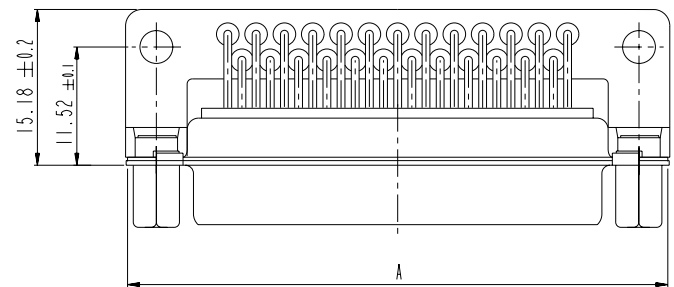
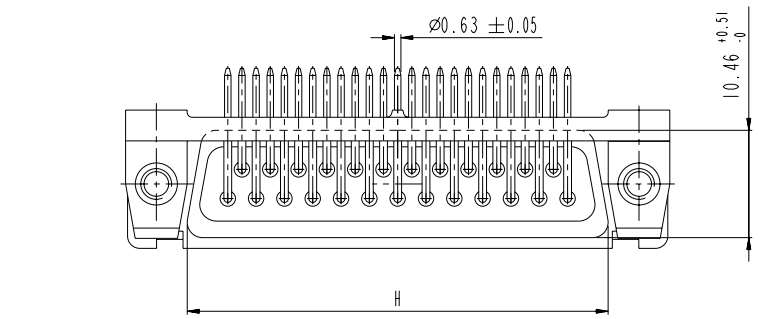
SCALE: 3

www.fciconnect.com		surface -	tolerance std	projection	mm
		ISO 1302	ISO 406 ISO 1101		
		TOLERANCES UNLESS OTHERWISE SPECIFIED			
Dr	M PESSON	2006/11/14	ANGULAR	0.X	± 0.3
Eng	P LEGARE	2006/11/14	LINEAR	0.XX	± 0.1
Chr	P LEGARE	2006/11/14	0° $\pm 2°$	0.XXX	± 0.05
Appr	P LEGARE	2006/11/14	Product family	Spec ref	
SUB MALE DM HE508 series		C01-8637-1744		Rev. B	
with right angle contact		C01-8637-1744		B	
catalog no		CUSTOMER		sheet 5 of 9	

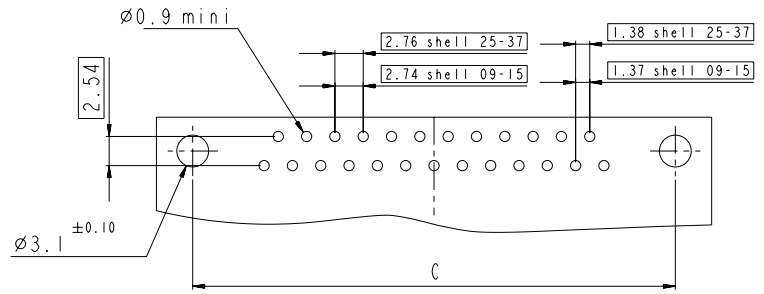
DIMENSION FOR SHELL E,A,B,C WITH PLASTIC BRACKET

Dimensions are in millimeters

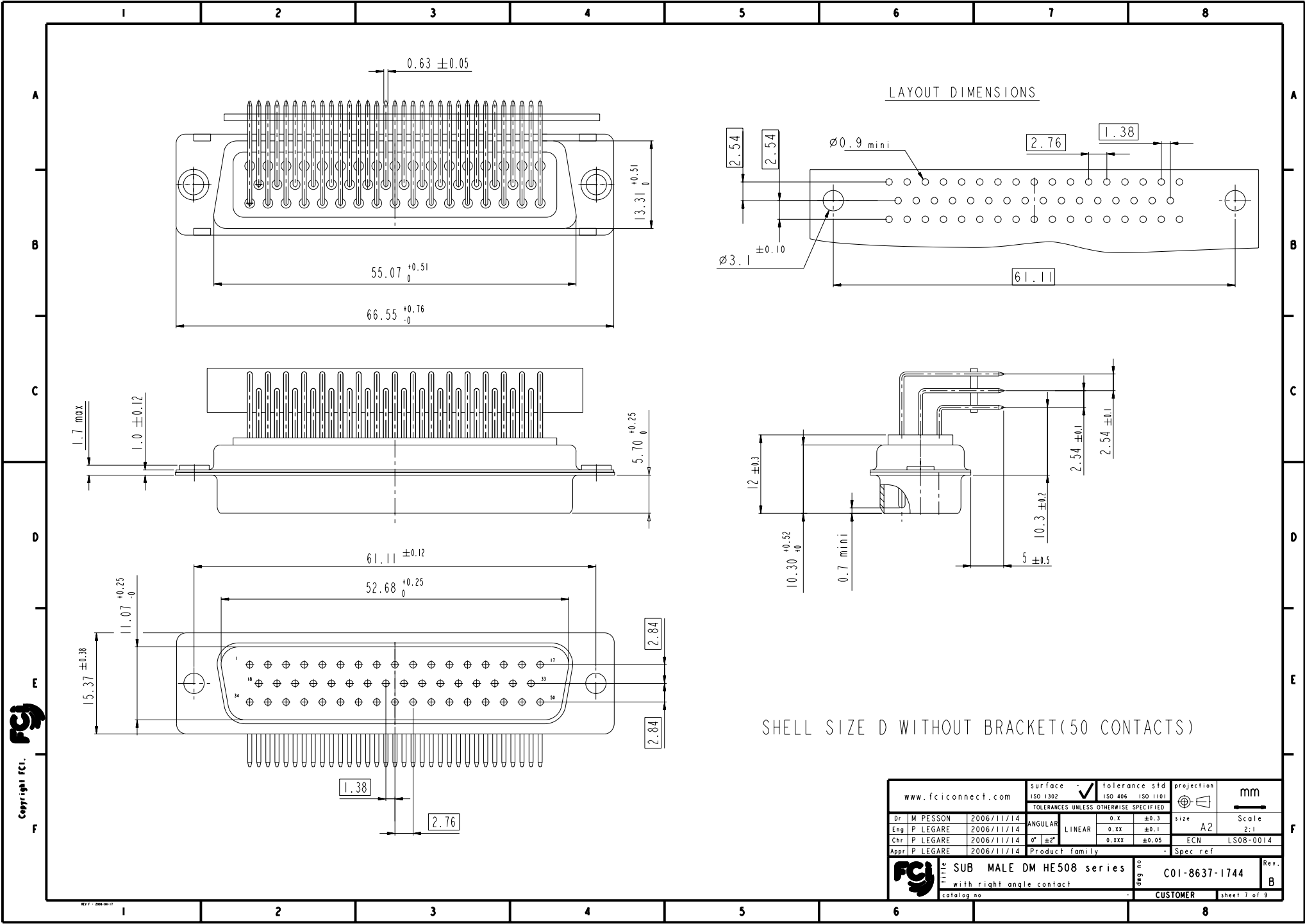
Shell size	Number of contacts	A ^{+0.76} ₋₀	B ^{+0.25} ₋₀	C ^{±0.12}	F ^{+0.57} ₋₀	G ^{+0.25} ₋₀	H ^{+0.51} ₋₀	L ^{+0.22} ₋₀
E	09	30.43	16.79	24.99	10.47	5.9 ^{+0.15} ₋₀	19.02	0.80
A	15	38.76	25.12	33.32	10.47	5.9 ^{+0.15} ₋₀	27.25	0.80
B	25	52.65	38.84	47.04	10.43	5.7 ^{+0.25} ₋₀	41.02	0.80
C	37	68.94	55.30	63.50	10.56	5.7 ^{+0.25} ₋₀	57.45	0.90

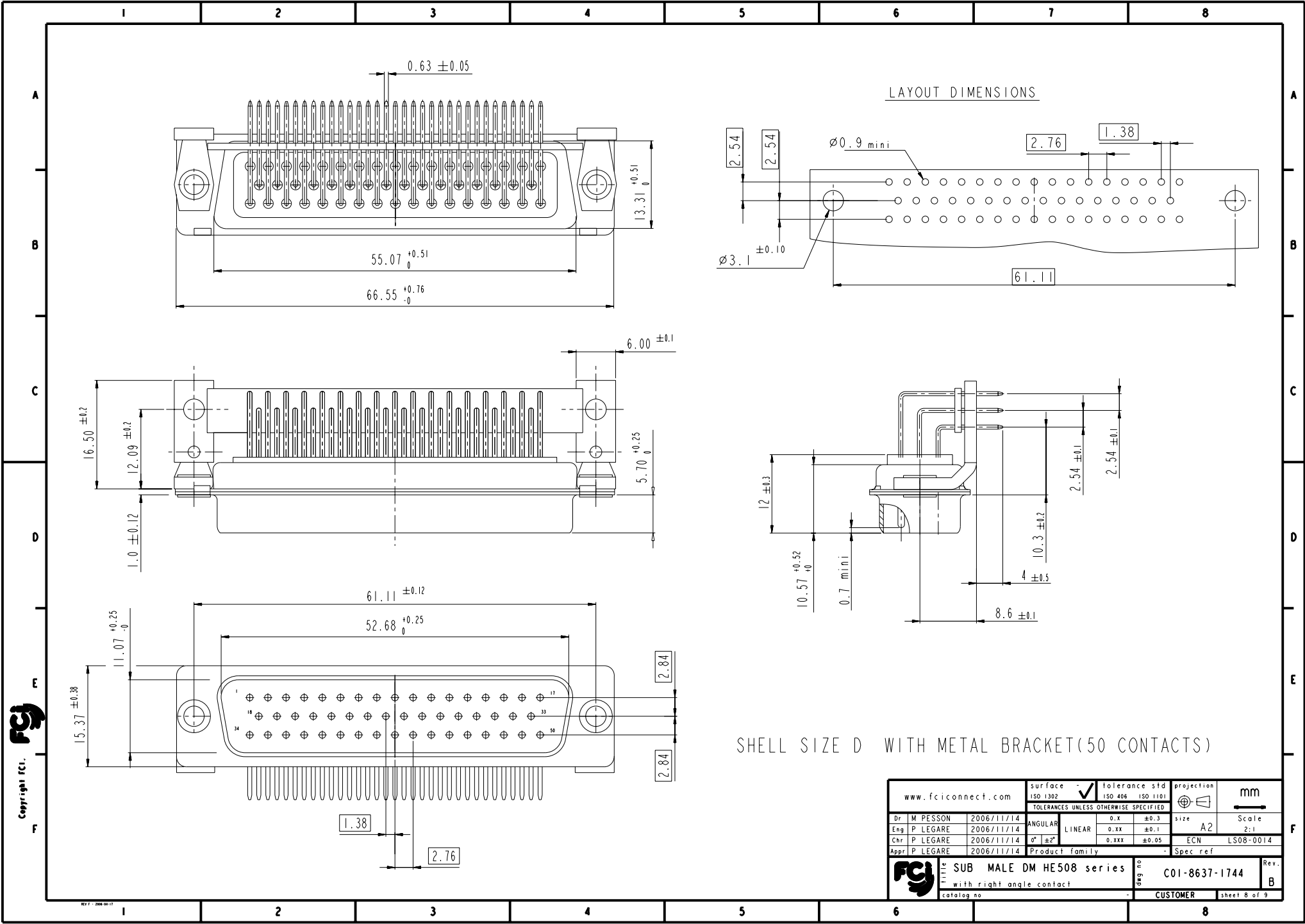


LAYOUT DIMENSIONS



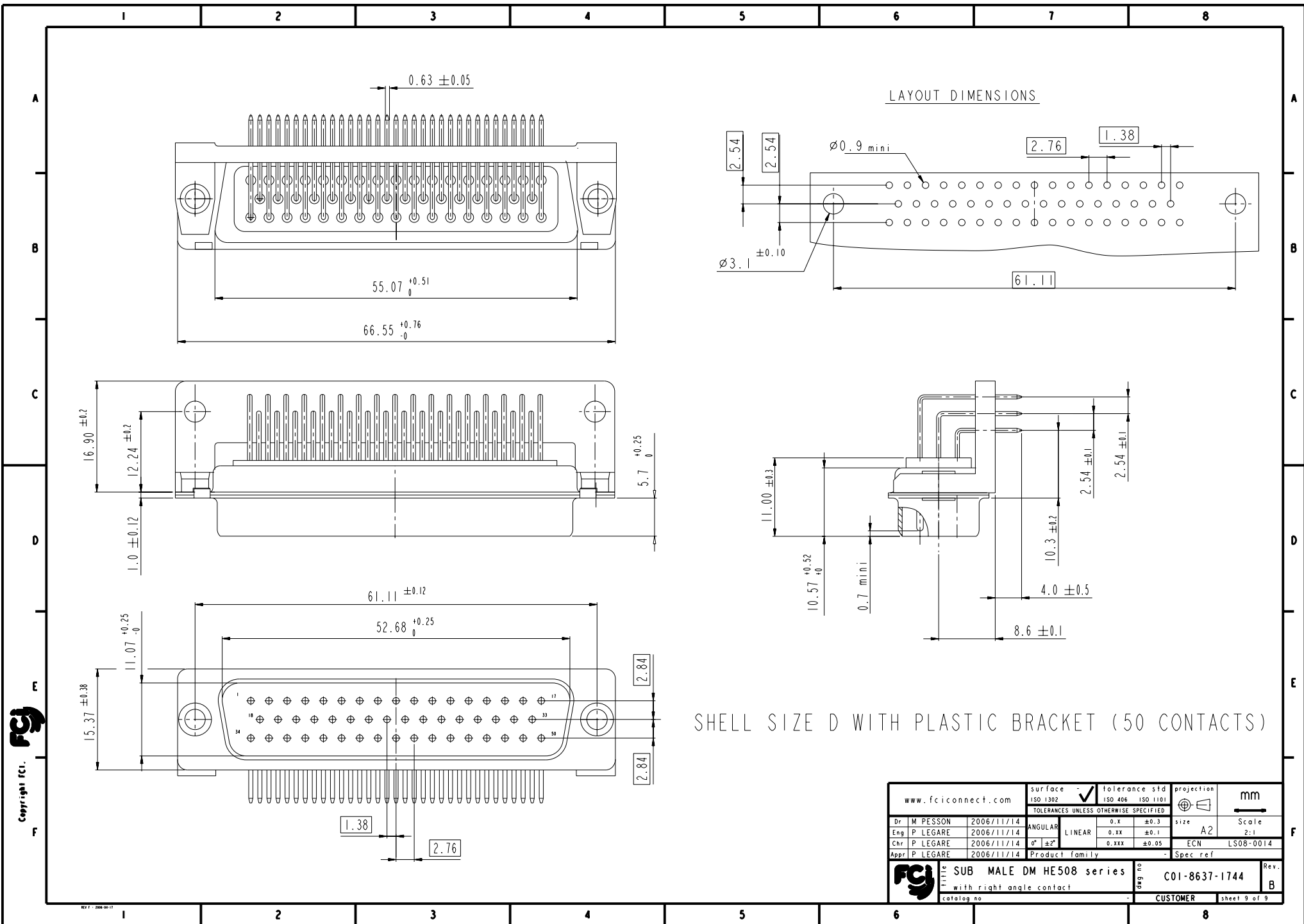
www.fciconnect.com		surface -	tolerance std	projection	mm
		ISO 1302	ISO 406	ISO 1101	
		TOLERANCES UNLESS OTHERWISE SPECIFIED			
Dr	M PESSON	2006/11/14	ANGULAR	LINEAR	size A2
Eng	P LEGARE	2006/11/14	0.X	±0.3	Scale 2:1
Chr	P LEGARE	2006/11/14	0.XX	±0.1	ECN LS08-0014
Appr	P LEGARE	2006/11/14	0.XXX	±0.05	Spec ref
SUB MALE DM HE508 series		Product family		- Spec ref	
with right angle contact		C01-8637-1744		Rev. B	
catalog no		CUSTOMER		sheet 6 of 9	








Copyright fci.

www.fciconnect.com		surface	ISO 1302	tolerance std	ISO 406	ISO 1101	projection	mm
		TOLERANCES UNLESS OTHERWISE SPECIFIED					size	Scale
Dr	M. PESSON	2006/11/14	ANGULAR	0.X	± 0.3		A2	2:1
Eng	P. LEGARE	2006/11/14	LINEAR	0.XX	± 0.1		ECN	LS08-0014
Chr	P. LEGARE	2006/11/14	$0^\circ \pm 2^\circ$	0.XXX	± 0.05		Spec ref	
Appr	P. LEGARE	2006/11/14	Product family					
SUB MALE DM HE508 series		with right angle contact		C01-8637-1744		Rev. B		
catalog no		CUSTOMER		sheet 8 of 9				



SHELL SIZE D WITH PLASTIC BRACKET (50 CONTACTS)

www.fciconnect.com			surface - <input checked="" type="checkbox"/> tolerance std ISO 1302 ISO 406 ISO 1101		projection 		mm 	
TOLERANCES UNLESS OTHERWISE SPECIFIED								
Dr	M PESSON	2006/11/14	ANGULAR	LINEAR	0.X	±0.3	size A2	Scale 2:1
Eng	P LEGARE	2006/11/14			0.XX	±0.1		
Chr	P LEGARE	2006/11/14	0° ±2°		0.XXX	±0.05	ECN	LS08-0014
Appr	P LEGARE	2006/11/14	Product family				Spec ref	
			SUB MALE DM HE508 series				Rev. B	
			with right angle contact					
catalog no			CUSTOMER				sheet 9 of 9	

Mouser Electronics

Authorized Distributor

Click to View Pricing, Inventory, Delivery & Lifecycle Information:

[FCI / Amphenol:](#)

[DAML15P500N](#) [DEM09P500CN](#) [DEMV09P500MN](#) [DAM15P500MN](#) [DAM15P500N](#) [DBM25P500MN](#) [DBM25P500N](#)
[DCM37P500N](#) [DDM50P500N](#) [DAM15P500CNSP718](#) [DAM15P500CN](#) [DEMO09P500M](#)