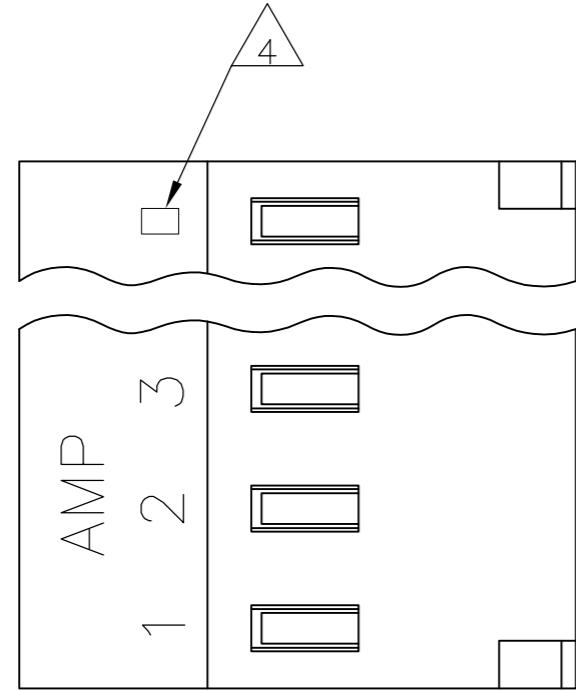
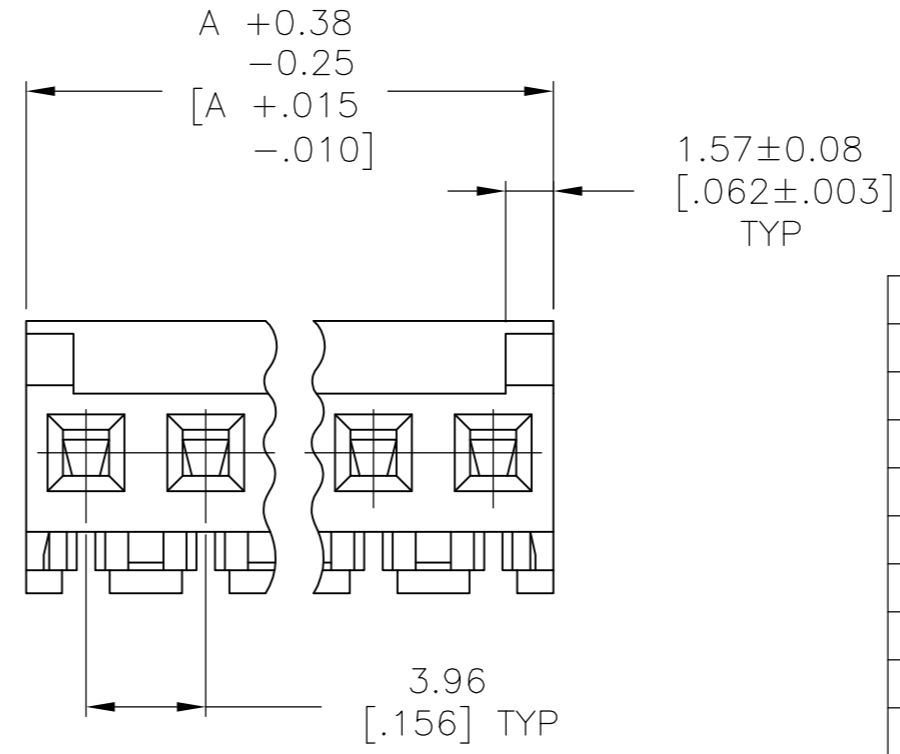
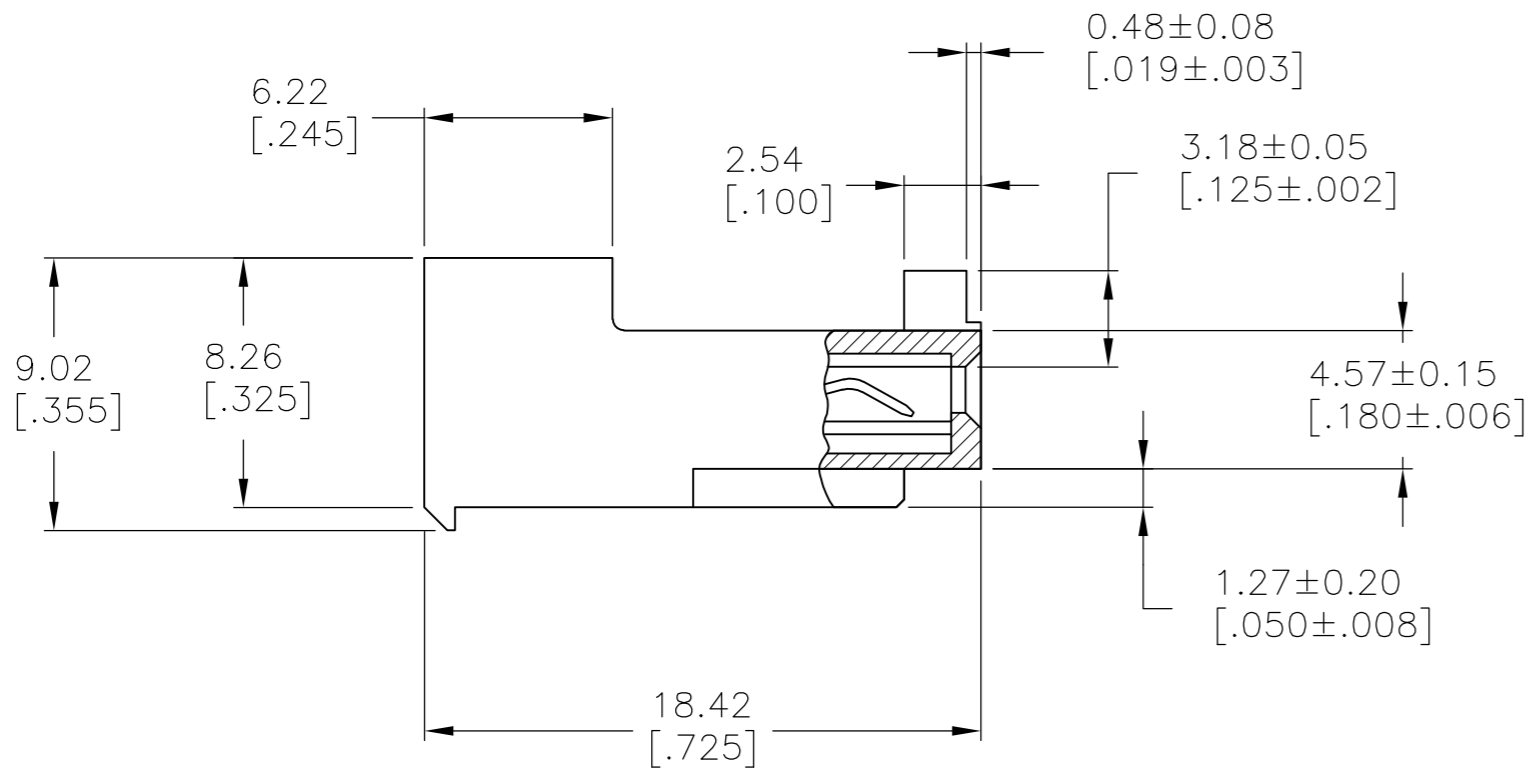


THIS DRAWING IS UNPUBLISHED. RELEASED FOR PUBLICATION
 © COPYRIGHT - TE Connectivity Ltd. ALL RIGHTS RESERVED.

REVISIONS					
P	LTR	DESCRIPTION	DATE	DWN	APVD
D2		REVISED PER ECR-17-018282	08MAY2018	BDA	SG



- 1 MATERIAL: CONNECTOR - NYLON UL94V-2 (WHITE).
CONTACTS - 0.30 [.012] THICK COPPER ALLOY BRIGHT-TIN LEAD 0.00203 [.000080] MIN THICK FOR CONTACTS 644464-2 THRU 1-644464-4 MATTE WHISKER MITIGATED TIN 0.00203 [.000080] MIN THICKNESS OVER NICKEL UNDERPLATE FOR 3-644464-2 THRU 4-644464-4
- 2. CONTACTS ACCEPT 24 AWG WIRE WITH 2.41[.095] MAX INSULATION DIAMETER.
- 3. CONTACTS MUST ACCEPT 1.14±0.03 [.045±.001] POST AND REMAIN LOCKED IN POSITION.
- 4 IDENTIFICATION NUMBER FOR LAST CIRCUIT MAY NOT APPEAR ON ALL ASSEMBLIES.
- 5. DIMENSIONS IN BRACKETS ARE IN INCHES.
- 6. HOUSING FEATURES ARE: CLOSED END WITHOUT LOCKING RAMP AND WITH POLARIZING TAB.
- 7 OBSOLETE PARTS: OBSOLETE CIS STREAMLINING PER D.RENAUD/D.SINISI
- 8 OBSOLETE PARTS



TIN	55.47	[2.184]	14	4-644464-4	
TIN	51.51	[2.028]	13	4-644464-3	
TIN	47.55	[1.872]	12	4-644464-2	
TIN	43.59	[1.716]	11	4-644464-1	
TIN	39.62	[1.560]	10	4-644464-0	
TIN	35.66	[1.404]	9	3-644464-9	
TIN	31.70	[1.248]	8	3-644464-8	
TIN	27.74	[1.092]	7	3-644464-7	
TIN	23.77	[.936]	6	3-644464-6	
TIN	19.81	[.780]	5	3-644464-5	
TIN	15.85	[.624]	4	3-644464-4	
TIN	11.89	[.468]	3	3-644464-3	
TIN	7.92	[.312]	2	3-644464-2	
7 SUPERSEDED	TIN-LEAD	55.47	[2.184]	14	-1-644464-4-
7 SUPERSEDED	TIN-LEAD	51.51	[2.028]	13	-1-644464-3-
8 SUPERSEDED	TIN-LEAD	47.55	[1.872]	12	-1-644464-2-
7 SUPERSEDED	TIN-LEAD	43.59	[1.716]	11	-1-644464-1-
7 SUPERSEDED	TIN-LEAD	39.62	[1.560]	10	-1-644464-0-
7 SUPERSEDED	TIN-LEAD	35.66	[1.404]	9	-644464-9-
7 SUPERSEDED	TIN-LEAD	31.70	[1.248]	8	-644464-8-
7 SUPERSEDED	TIN-LEAD	27.74	[1.092]	7	-644464-7-
7 SUPERSEDED	TIN-LEAD	23.77	[.936]	6	-644464-6-
8 SUPERSEDED	TIN-LEAD	19.81	[.780]	5	-644464-5-
7 SUPERSEDED	TIN-LEAD	15.85	[.624]	4	-644464-4-
7 SUPERSEDED	TIN-LEAD	11.89	[.468]	3	-644464-3-
8 SUPERSEDED	TIN-LEAD	7.92	[.312]	2	-644464-2-
	FINISH	DIM A	NO OF CIRCUITS	PART NO	

THIS DRAWING IS A CONTROLLED DOCUMENT.

DIMENSIONS: mm [INCHES]	TOLERANCES UNLESS OTHERWISE SPECIFIED: 0 PLC ± - 1 PLC ± - 2 PLC ± - 3 PLC ± 0.13 [.005] 4 PLC ± - ANGLES ± -	DWN B. LEWIS 12 FEB 91 CHK R. SWING 12 FEB 91 APVD D. CLARK 20 FEB 91	NAME PRODUCT SPEC APPLICATION SPEC	SIZE CAGE CODE DRAWING NO	RESTRICTED TO
			108-1051 114-1020	A2 00779 C-644464	-
MATERIAL 1	FINISH 1	CUSTOMER DRAWING		SCALE 4:1	SHEET 1 OF 1 REV D2

TE Connectivity Ltd.
MTA-156 CONNECTOR ASSEMBLY, 24 AWG, STANDARD