

RED INDICATES ORIGINAL

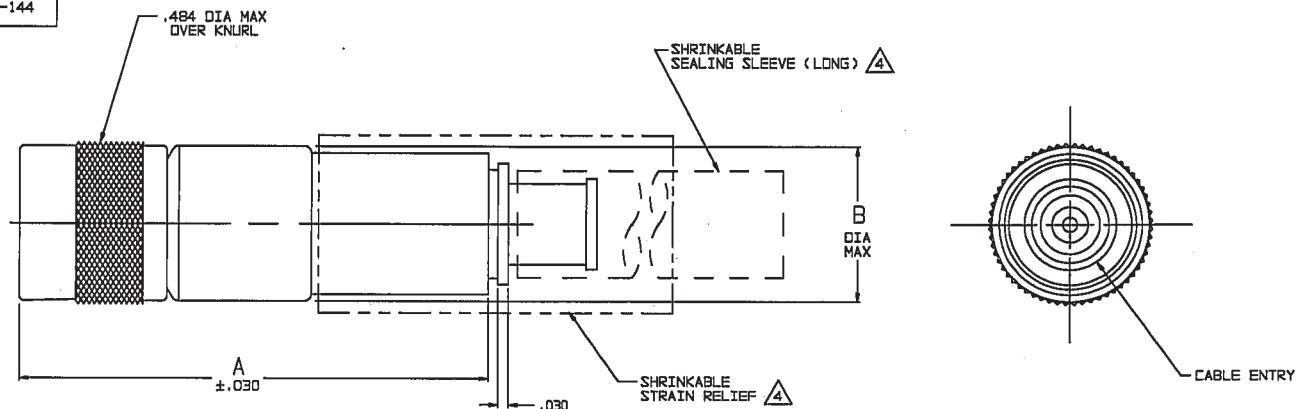
DASH NO	CABLES ACCOMMODATED	A DIM	B DIA	C HEX	ASSEMBLE PER
-201	M17-176-00002				
-202	TWC-78-1				
-203	TWC-124-1A				
-204	10602, RAYCHEM	1.116	.339	.255	TAI-143
-205	TWAC-78-1F2				
-206	762600130, RAYCHEM				
-207	83310 BELDEN	1.322	.442	.344	TAI-167
-208	202-3927 MICRODOT	1.116	.339	.255	TAI-143
-209	202-3942 MICRODOT				
-210	8451 BELDEN				TAI-167
-211	202-3934 MICRODOT				
-212	2524E0114, RAYCHEM				
-213	TWC-78-2	1.322	.442	.344	TAI-144
-214	TWC-124-2				
-215	BL-982 TIMES				
-216	BL-1242 TIMES				
-217	GC875TM24H, GRUMMAN				
-218	EPD 22188B, RAYCHEM				
-219	2526D1114, RAYCHEM				
-220	GC875RR1, GRUMMAN	1.116	.339	.255	TAI-143
-221	10614, RAYCHEM				
-222	10613, RAYCHEM				
-223	HMS2-1149, HUGHES				
-224	TWCP-124-3	1.322	.442	.344	TAI-144
-225	PS865PL, PRIME STOCK				

DATA CONTAINED IN THIS DOCUMENT IS PROPRIETARY TO TROMPETER ELECTRONICS INC. AND SHALL NOT BE DISCLOSED, COPIED OR USED FOR PROCUREMENT OR MANUFACTURE WITHOUT EXPRESS WRITTEN PERMISSION.

REVISONS			310-0061	SH 1
REV	EO	DESCRIPTION	DWN	APPROVED
K	12388	ADDED -224 & -225; SEE ECO	DBN	12/1/98

DASH NO	CABLES ACCOMMODATED	A DIM	B DIA	C HEX	ASSEMBLE PER
-301	GC875GC1, GRUMMAN				
-302	GC875GB1, GRUMMAN	1.116	.339	.255	TAI-153
-303	5022E5111, RAYCHEM				
-304	7528A5314, RAYCHEM				
-305	M17-177-00001				
-306	295-3804 MICRODOT	1.322	.442	.344	TAI-173
-307	TRC-50-2				
-308	TRC-75-1				TAI-198
-309	TRC-75-2				TAI-173
-309	TRC-50-1	1.116	.339	.255	TAI-153

INCH	MM
.005	0.13
.030	0.76
.255	6.48
.339	8.61
.344	8.74
.442	11.23
.484	12.28
1.00	25.40
1.116	28.35
1.25	31.75
1.322	33.58
1.75	44.45



- 1 SHRINKABLE STRAIN RELIEF AND/OR SHRINKABLE SEALING SLEEVE SUPPLIED LOOSE AS FOLLOWS:
- CABLE GROUPS -207, -210 & -307:
 - 1 SHRINKABLE STRAIN RELIEF (1.00 LONG)
 - 1 SHRINKABLE SEALING SLEEVE (1.25 LONG)
 - CABLE GROUPS -201 THROUGH -205, -208, -209, -217 THROUGH -223, -301, -302, -303 & -309
 - 1 SHRINKABLE SEALING SLEEVE (1.25 LONG)
 - CABLE GROUPS -211 THROUGH -216, -305, -306 & -308
 - 1 SHRINKABLE STRAIN RELIEF (1.75 LONG)

-207 SHOWN

3. 4-LUG SUBMINIATURE CONCENTRIC TWINAX (4 PIECE ASSY) AND TRIAX (6 PIECE ASSY), FULL CRIMP CABLE PLUG

2. FINISH: TFS-1A (NICKEL)

1. ALL DIM ARE IN INCHES

6. EXAMPLE OF COMPLETE MODEL NO:
PL155ACFL-201
- BASIC MODEL NO _____ CABLE GROUP DASH NO _____
5. EXAMPLE OF COMPLETE PART NO:
310-0061-201
- BASIC PART NO _____ CABLE GROUP DASH NO _____



QTY	DESCRIPTION	PART NUMBER	ITEM
TOL UNLESS SPECIFIED .XX ± .03 .XXX ± .005 .XXXX ± .0005 ANGLES	TROMPETER RF connectivity	PL155ACFL	
DWN DBN 4/3/98	MATERIAL	CODE IDENT	DRAWING NO.
CHK 12/1/98	4-7-98	14949	310-0061
ENGR	APPR	SCALE 4/1	DATE 6-8-95
NEXT ASSY	APPR	4-8-98	SHEET 1 OF 2

Mouser Electronics

Authorized Distributor

Click to View Pricing, Inventory, Delivery & Lifecycle Information:

[Cinch Connectivity Solutions:](#)

[PL155ACFL-222](#)