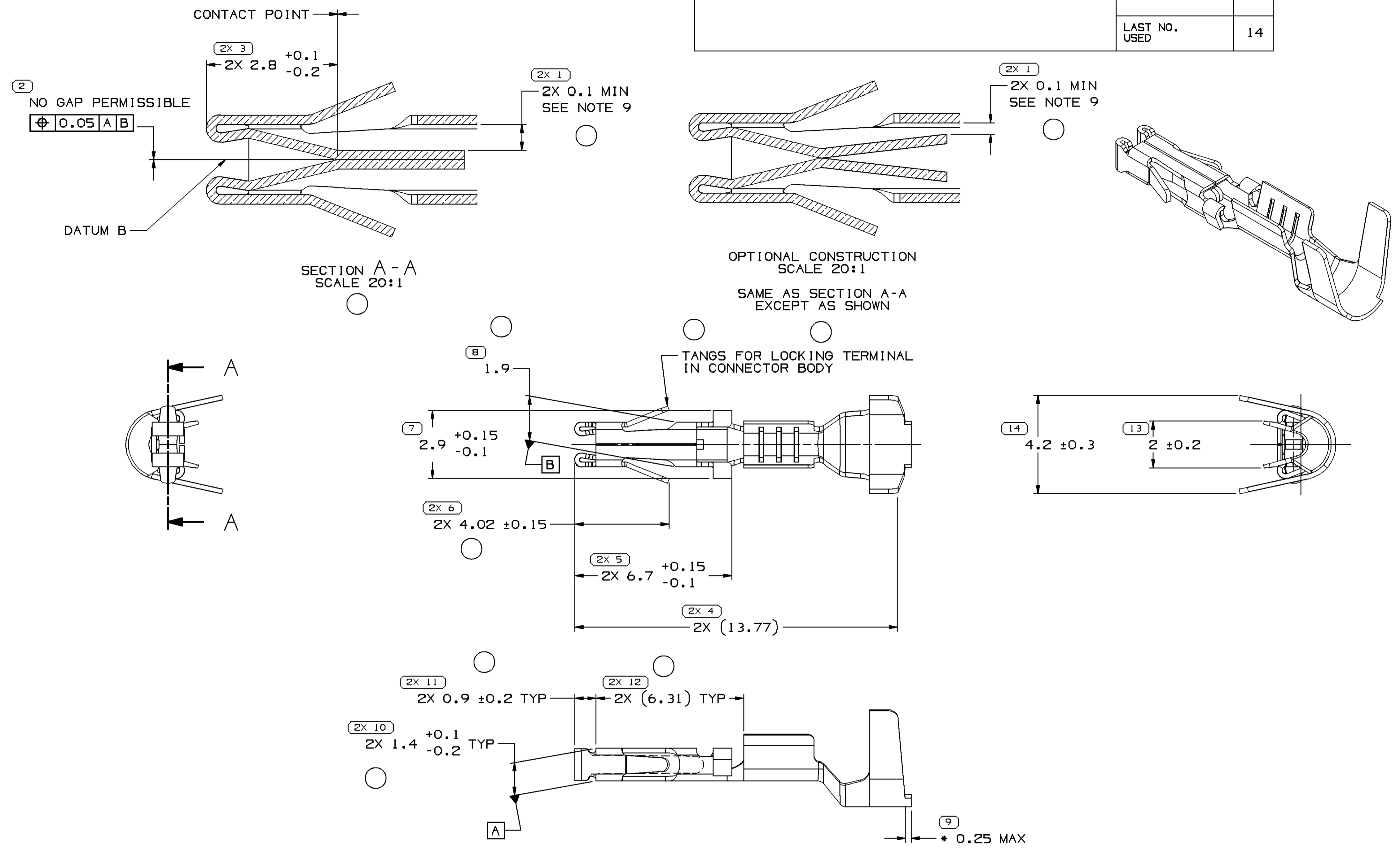


SYMBOL DEFINITION		MISSING SYMBOLS	
A DIMENSION WITHOUT AN INSPECTION REPORT SYMBOL DOES NOT REQUIRE INSPECTION. IT MAY BE CONTROLLED ON THE INDIVIDUAL COMPONENT DRAWING.	TOTAL NO OF INSPECTIONS REQUIRED	NO MISSING SYMBOL NUMBER	24
	LAST NO. USED		14

DWG STATUS					REVISION HISTORY				AUTH		DR		APVD	
DATE	STG	REV	N/P	CHG	ZONE									
190C01	R	D4	-	-		CLEARED REV COLUMN AND REVISED GRAPHICS		215935	JAA	JAA	MW			
16AP02	R	D5	-	-		UPDATED FORMAT AND REVISED GAP NOTE ON TQD DWG		223829	RAB	RAB	MD			
29N002	R	D6	-	-		UPDATED PDM ATTRIBUTES		233435	LOA	FRG	RF			
03JA03	R	D7	-	-		2.9+0.15-0.1 WAS 2.900.15 AND 2X 6.7 +0.15-0.1 WAS 2X 6.700.15		235051	TLD	TLD	RF			
17MR03	R	05	-	-		UPDATED PDM ATTRIBUTES		238452	TLD	TLD	RF			
100C14	R	05	AA	-		2X 1.4 +0.1/-0.2 WAS 1.4, 2X 4.02 ±0.15 WAS 2X 3.95 ±0.15, ADDED DIMS (3 PLCS) SECTION A-A & OPTIONAL CONSTRUCTION VIEW, SEE NOTE 9 LABEL, TERMINAL TO ACCEPT, MATING SQUARE, TERMINAL MUST RETAIN AND CONTACT ARM MEASUREMENT INSPECTION NOTES		427853	HCG	HCG	JFF			



- NOTES
- UNLESS OTHERWISE SPECIFIED AND/OR INDICATED: DIMENSIONS ARE TO FACE OF VIEW SHOWN AND AUTOMATICALLY ROUNDED BY COMPUTER FOR INSPECTION (SEE MATH MODEL FOR PRECISE DIMENSIONS). FOR ALL OTHER DIMENSIONS NOT SHOWN BUT REQUIRED FOR TOOL BUILD, SEE MATH MODEL FOR PRECISE TOOL PATH DATA.
  - \* DENOTES DIMENSION IS MADE AT CUT OFF AND CRIMP DIE.
  - MATING CONNECTOR 15305080 OR EQUIVALENT.
  - TERMINALS TO ACCEPT AND RETAIN CABLE SEAL 12191226 OR EQUIVALENT.
  - REFER TO M-3725 FOR MATERIAL PROPERTIES.
  - TERMINAL TO ACCEPT 0.35-0.5MM<sup>2</sup> CABLE.
  - MATING SQUARE BLADE DEFINED BY EWCAP-001 USCAR Blades rev J.
  - TERMINAL MUST RETAIN A 0.64 SQUARE HARDENED STEEL PIN 200 GRAMS IN WEIGHT, INSERTED 3.9mm FROM FRONT OF TERMINAL. REFER TO EWCAP-001 USCAR Blades rev J FOR PIN TIP GEOMETRY.
  - THE SUM ON THE TWO CONTACT ARM TIP TO SIDEWALL GAP MEASUREMENTS (INSPECTION #1) MUST BE 0.5 MIN.

LINE DRAWN THROUGH A PART NUMBER INDICATES THAT PHYSICAL PARTS ARE NOT AVAILABLE FOR ORDERING.	
PART NUMBERS THAT DO NOT HAVE A LINE PRESENT INDICATE THAT PHYSICAL PARTS ARE AVAILABLE FOR ORDERING.	
CONTACT DELPHI SALES TO ASSURE AVAILABILITY OF PARTS.	
DWG TYPE: PART DRAWING	
STYLE: D	
VOLUME (C/P)	DISTR CODE
UNLESS OTHERWISE SPECIFIED THIS DOCUMENT IS IN ACCORDANCE WITH ASME Y14.5M-1994 AS AMENDED BY THE 0M GLOBAL DIMENSIONING AND TOLERANCING ADDENDUM - 1997. ALL GEOMETRIC TOLERANCES AND RELATED DATUMS APPLY RFS. RULE #1 (PERFECT FORM AT MMV) DOES NOT APPLY WHEN RELATIONSHIP BETWEEN FEATURES IS ESTABLISHED BY ORIENTATION OR LOCATION TOLERANCES. SEPARATE POSITION CALLOUTS MAY BE GAGED SEPARATELY, REGARDLESS OF DATUM REFERENCE. ALL DIMENSIONS ARE IN MILLIMETERS	
REFERENCE:	
THIRD ANGLE PROJECTION	DO NOT SCALE
USE MATH DATA	NX

**DELPHI**  
 DELPHI PACKARD ELECTRICAL/ELECTRONIC ARCHITECTURE  
 WARREN, OH  
 COPYRIGHT 1996 DELPHI CORPORATION AND/OR ITS AFFILIATES. ALL RIGHTS RESERVED.  
 THIS DRAWING IS THE PROPERTY OF DELPHI CORPORATION AND CONTAINS DELPHI CONFIDENTIAL INFORMATION. THE REPRODUCTION, DISTRIBUTION AND UTILIZATION OF THIS DOCUMENT OR ITS RELATED CAD MATH DATA, AS WELL AS COMMUNICATION OF ANY CONTENT TO OTHERS, WITHOUT EXPRESS AUTHORIZATION, IS PROHIBITED.

DR	DATE
APVD1 G.G. IZQUIERDO	30JL96
APVD2 MANUEL VEGA	30JL96
APVD3 R. POLENICK	23DE97
APVD4	
APVD5	

SUBSTANCES OF CONCERN AND RECYCLED CONTENT PER DELPHI-A 10949001

MATERIAL: M-3725-965 BECU ALLOY

DRAWING NAME: TERM F MIC/P 064 SN SEALED TANG

DRAWING NUMBER: 15305174

SIZE	SCALE	FRAME NO	SHEET NO	STG	REV	N/P
A1	10:1	1 OF 1	1 OF 1	R	05	AA

# Mouser Electronics

Authorized Distributor

Click to View Pricing, Inventory, Delivery & Lifecycle Information:

[Aptiv:](#)

[15305174-L](#)