

1 PIN □0.63: ITEM NO. 2.3; 1.3 - 2.5 μm NICKEL PLATED
MATING-SIDE MIN. 0.8 μm GOLD PLATED
ITEM NO. 4.5; 2 - 4 μm REFLOW TIN-PLATED

2 TAB 2.8x0.8: 0.8 - 3 μm PRE TINPLATED
SOLDER POINTS 4 - 8 μm TINPLATED

3 Stiffte □0.63: AXIAL RESISTANT FORCE MIN. 40N

4 TABS 2.8x0.8: AXIAL RESISTANT FORCE MIN. 80N

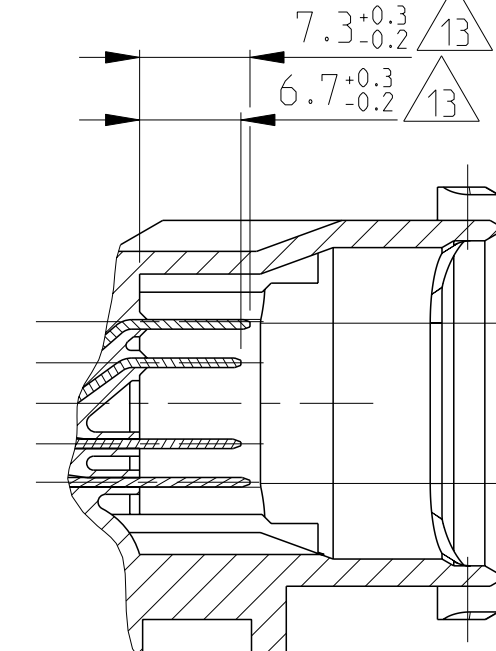
5 MATING GAUGE FOR SOLDER-SIDE: NO.: 90-244629/90-244630



6 MOULD DEPENDING WARPAGE OF $+0.2$ MM PERMITTED
 -0.6

7 DIMENSIONS AND TOLERANCES OF FORM AND POSITION
OF THE PIN- AND TAB ENDS ARE VALID ONLY WITH
PREASSEMBLED CENTERPLATE

8 TE PART-NO. ACC. TO SHEET 2

9 FOR MEASURING THE CONTACT PROTRUSIONS
OF THE SOLDERSIDE; MATINGSIDE
AND THE TOLERANCES OF FORM AND POSITION
THE MEASURING APPLIANCE NO. 90-244738 IS TO BE EMPLOYED



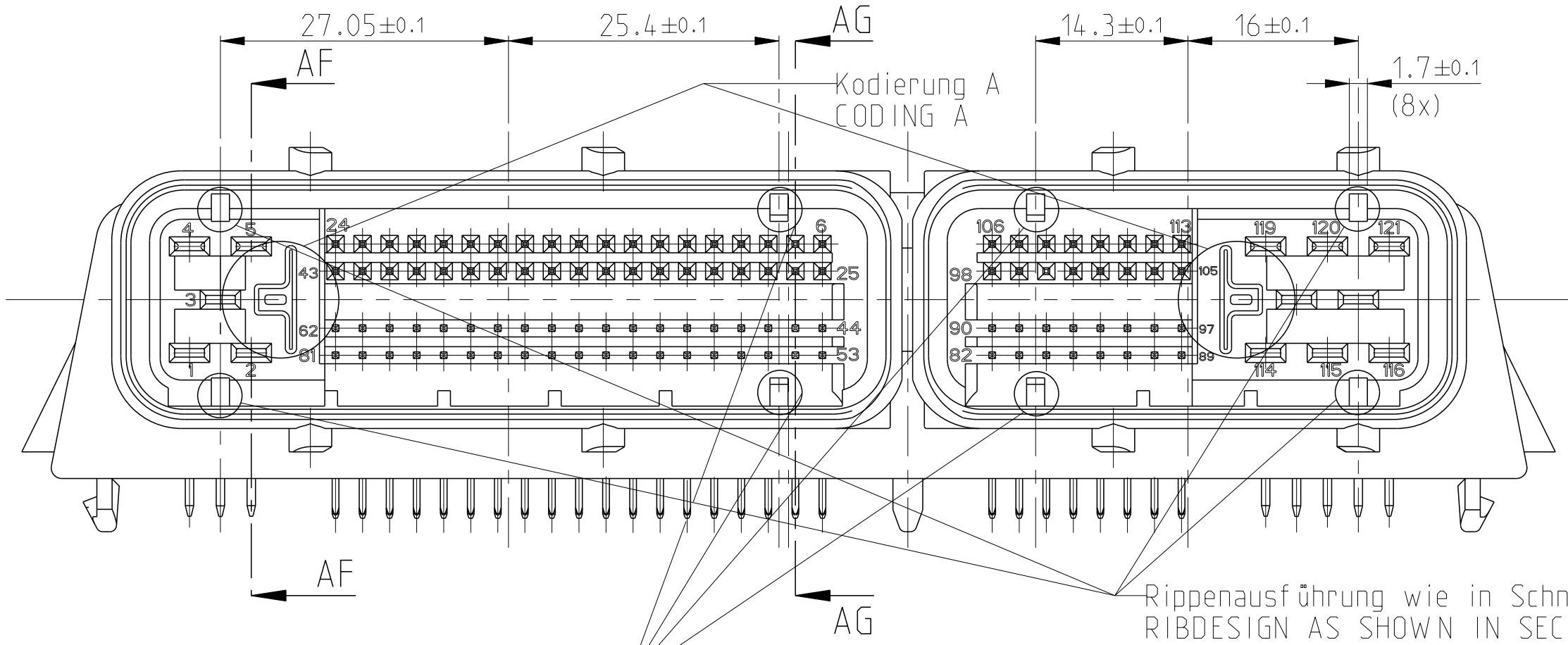
THIS DRAWING IS A CONTROLLED DOCUMENT.		DIN G.Fischer	11JANO2	<div>TE Connectivity</div>							
		CHK B.Kirsch	11JANO2								
		APPROV M.Bleicher	14DEC06								
DIMENSIONS:		TOLERANCES UNLESS OTHERWISE SPECIFIED:		NAME	PIN-/TAB 2.8x0.8 HEADER, Stift-/Flachstecker 2.8x0.8 Leiste. 108/13 POSN.. TSMT/JPT						
mm											
	0 PLC	±0.1									
	1 PLC	±0.1									
	2 PLC	±0.1									
	3 PLC	±0.1									
	4 PLC	±0.1									
ANGLES		±2°									
MATERIAL		FINISH		SIZE	CAGE CODE	DRAWING NO	RESTRICTED TO				
SEE TABLE		-		A1	00779	C=1394423	-				
-		-		CUSTOMER DRAWING		SCALE	2:1	SHEET	1 of 2	REV.	B8

REVISIONS				
#	LYR	DESCRIPTION	DATE	DWN
-	-	SEE SHEET 1	-	-

0-1394423-1

Kodierung A
CODING A

Darstellung ohne Zentrierplatte
SHOWN WITHOUT CENTERPLATE

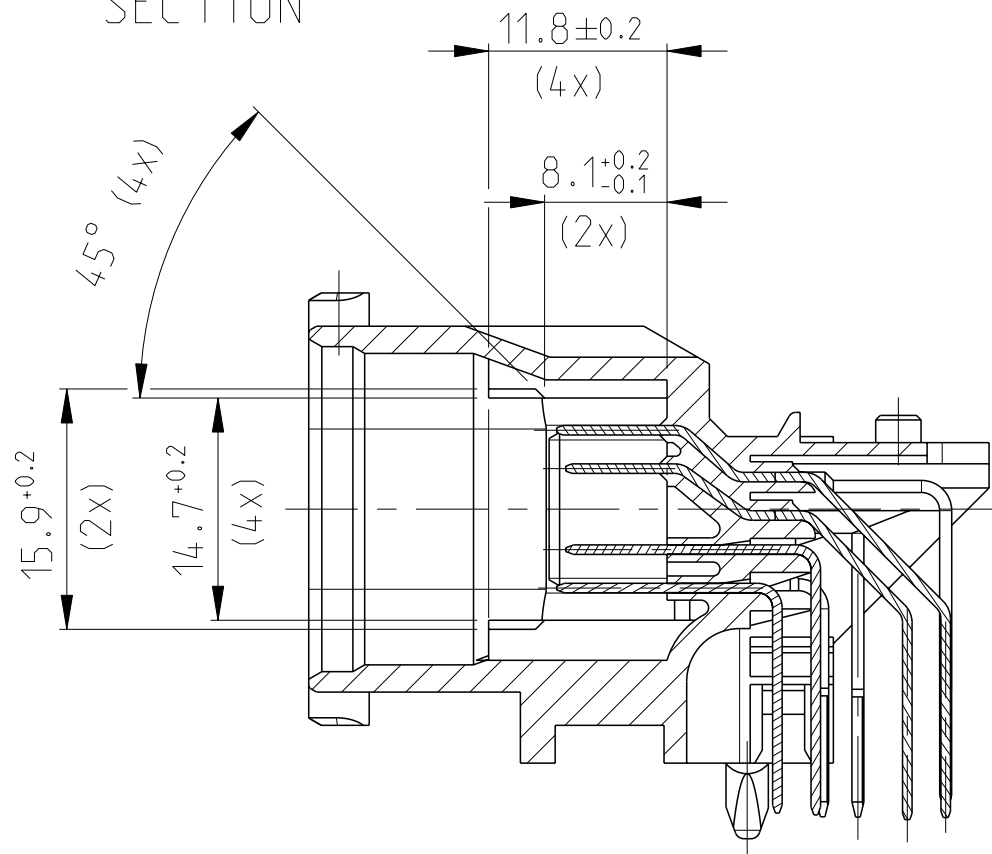
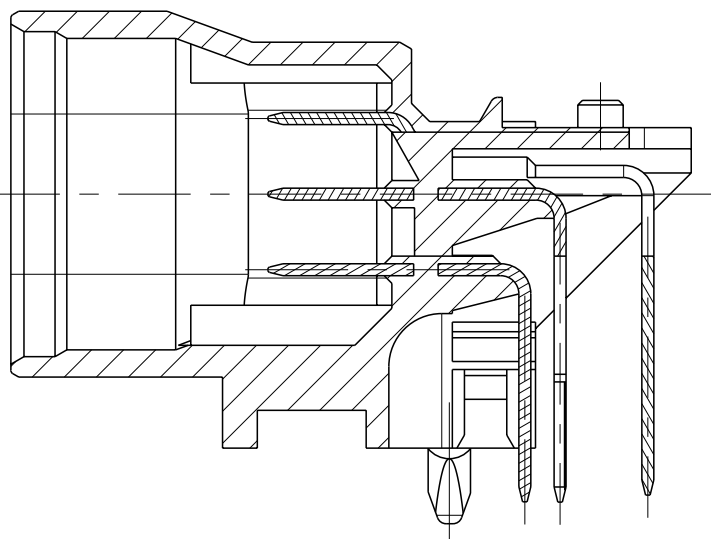


Rippenausführung wie in Schnitt AF - AF gezeigt
RIBDESIGN AS SHOWN IN SECTION AF - AF

Rippenausführung wie in Schnitt AG - AG gezeigt
RIBDESIGN AS SHOWN IN SECTION AG - AG

Schnitt
SECTION AF-AF

Schnitt
SECTION AG-AG



Stift-/ Tab-Leiste PIN-/TAB- HEADER	Passende Buchsenstecker SUITABLE RECEPTACLE-HOUSINGS	
	40pol 40POSN.	81pol. 81POSN.
	TE Teil-Nr. TE PART-NO.	TE Teil-Nr. TE PART-NO.
1394423-1	-	-
1394423-2	-	-

Tabelle 2 / TABLE 2

REVISION	B	B	B					
CODING/Kodierung	A	A	A					
	0-1394423-2	9-1394423-1	0-1394423-1					
X	X	X	X	PIN HOUSING Stiftwanne	1	9	BLACK Schwarz	PA66-GF 30
X	X	X	X	TAB 2.8x0.8; LONG Flachstecker 2.8x0.8; lang	5	8		CuSn 6
X	X	X	X	TAB 2.8x0.8; MIDDLE Flachstecker 2.8x0.8; mittel	3	7		CuSn 6
X	X	X	X	TAB 2.8x0.8; SHORT Flachstecker 2.8x0.8; kurz	5	6		CuSn 6
X	X	X	X	PIN 0.63; LONGEST Stift 0.63; sehr lang	27	5		CuSn 6
X	X	X	X	PIN 0.63; LONG Stift 0.63; lang	27	4		CuSn 6
X				PIN 0.63; MIDDLE Stift 0.63; mittel	27	3		CuSn 6
	X	X	X	PIN 0.63; MIDDLE Stift 0.63; mittel	27	3		CuSn 6
X	X	X	X	PIN 0.63; SHORT Stift 0.63; kurz	27	2		CuSn 6
X	X	X	X	CENTERPLATE Zentrierplatte	1	1	BLACK Schwarz	PA66-GF 50
ORDER-NO. Bestell-Nr.	ORDER-NO. Bestell-Nr.	ORDER-NO. Bestell-Nr.	SINGLE-PART DESCR. Einzelteil-Benennung	QTY.	ITEM NO.	COLOR, Farbe		MATERIAL
						SURFACE, Oberfl äche		Material

Mouser Electronics

Authorized Distributor

Click to View Pricing, Inventory, Delivery & Lifecycle Information:

[TE Connectivity:](#)

[1394423-2](#)