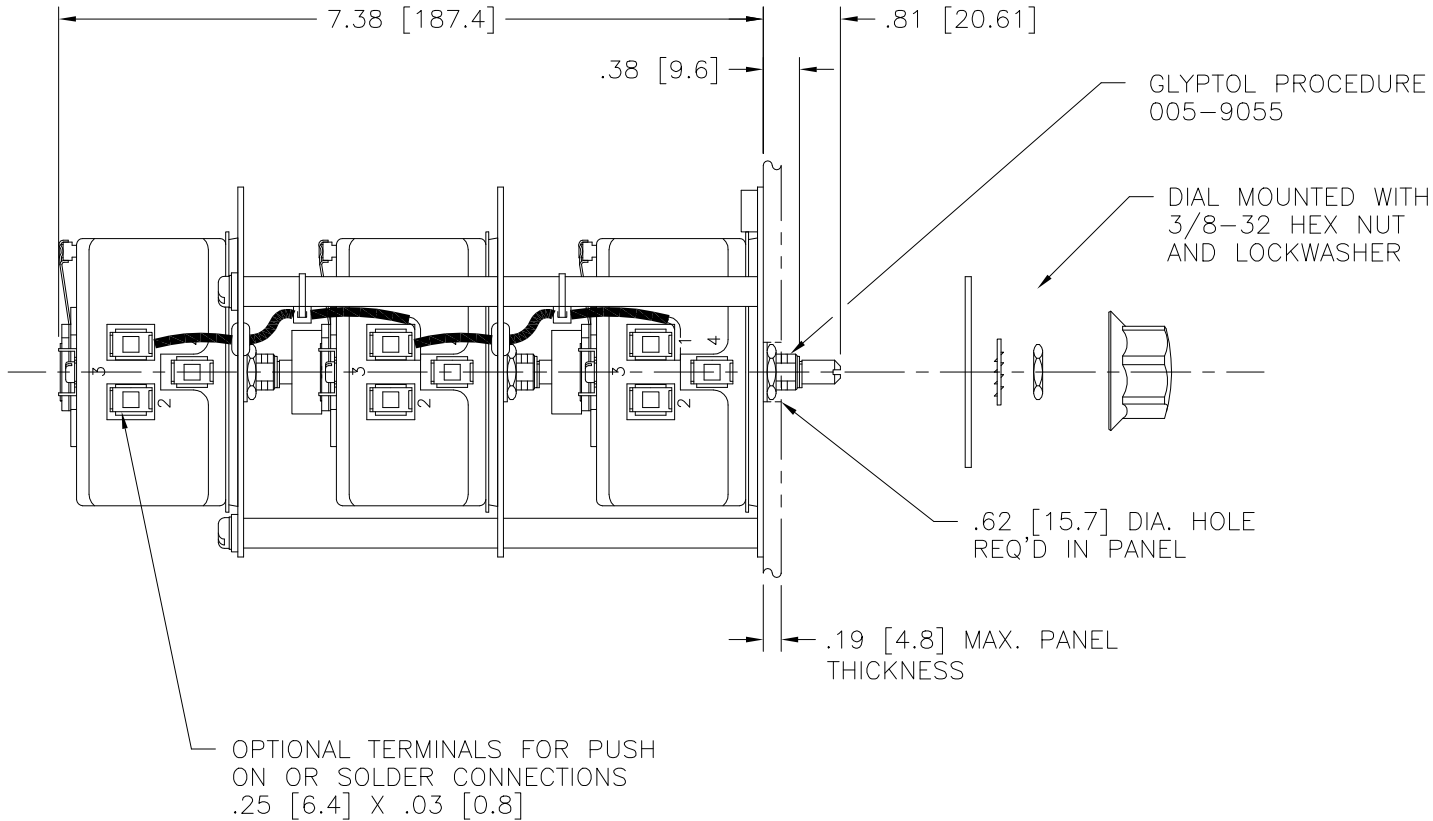
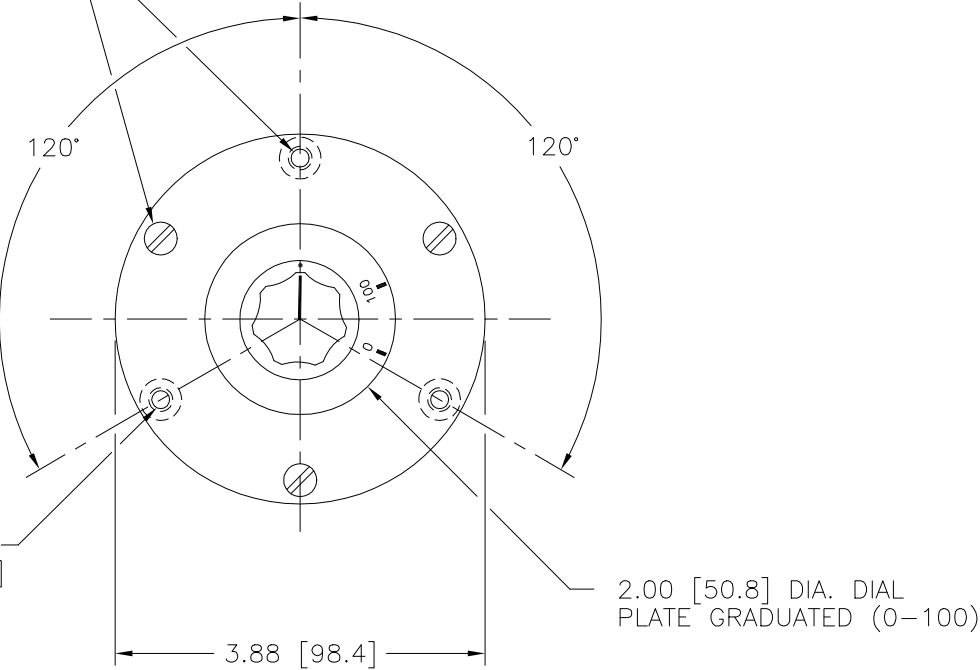


DWG. NO.	031-0125		
REVISIONS			
SYM.	E.C.N.	DATE	APVD.
A	23648	12/31/97	REVISED & REDRAWN



TO BE FLUSH OR BELOW FLUSH WITH BOTTOM MOUNTING PLATE

1/4-20 UNC-2B (3) HOLES 120° APART ON A 3.38 [85.8] DIA. BOLT CIRCLE

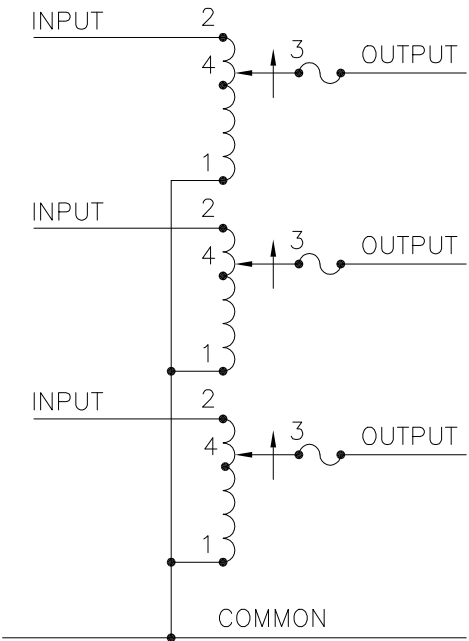


NOTES:

1. MAXIMUM AMBIENT TEMPERATURE 50°C
2. VENTILATION MUST BE PROVIDED WHEN USED IN AN ENCLOSURE.


SPECIFICATIONS:

- ++ LINE TO LINE VOLTAGE
- ⌋ IF GANGED UNITS ARE USED IN A SYSTEM THAT ORDINARILY HAS A COMMON NEUTRAL OR GROUND BETWEEN SOURCE AND LOAD, THE NEUTRAL OR GROUND MUST BE CONNECTED TO THE COMMON TERMINALS OF THE VARIABLE TRANSFORMER ASSEMBLY. IF THE SYSTEM HAS NO NEUTRAL, THE LOAD MUST BE BALANCED OR THE TRANSFORMERS WILL BE DAMAGED.
- JUMPER PROVIDED IN THE STANDARD COMMON POSITION AND SHOULD BE MOVED OR REMOVED AS REQUIRED.



SCHEMATIC

FUSE RECOMMENDED BUT NOT SUPPLIED

SPECIFICATIONS															
WIRING	INPUT		OUTPUT				SHAFT ROTATION TO INCREASE VOLTAGE	TERMINAL CONNECTIONS							
	VOLTS	HERTZ	VOLTS	CONSTANT CURRENT LOAD		CONSTANT IMPEDANCE LOAD		FOR INCREASING VOLTAGE AS VIEWED FROM BASE END							
				MAX. AMPS	MAX. KVA	MAX. AMPS		MAX. KVA	INPUT	JUMPER ■	OUTPUT				
THREE PHASE WYE <i>W</i>	240 ++	60	0-240	1.75	0.73	2.2	0.92	CW	2-2-2	1-1-1	3-3-3				
								CCW	1-1-1	2-2-2	3-3-3				
UNLESS OTHERWISE SPECIFIED, TOLERANCE IS ±				TITL:		SPEC. CONTROL DRAWING VARIABLE TRANSFORMER TYPE: 171-3				 <b>STACO</b> ENERGY PRODUCTS CO. A COMPONENTS CORPORATION OF AMERICA COMPANY DAYTON, OHIO U.S.A.					
DECIMALS .XX .010 XXX .005		HOLES .002		ANGLES 1°								DRAFT 1-1/2°		UNITS IN [mm]	
MATERIAL :				ALL DIMENSIONS APPLY AFTER PLATING											
The information and design disclosed herein was originated by and is the property of STACO ENERGY PRODUCTS CO., which reserves all patent, proprietary, design, manufacturing, reproduction, use and sale rights thereto, and to any article disclosed therein except to the extent rights are expressly granted to others. The foregoing does not apply to vendor proprietary parts.				DRAWN BY TIM RAU		DATE 12/29/97		FIRST USED ON		DO NOT SCALE DWG.		CUSTOMER APPROVAL		DATE	
				CHECKER		DATE		WEIGHT APPROX. 6.5 LBS.		CODE IDENT. NO. 83008		DWG. SIZE		DWG. NO.	
				ENGINEER		DATE		SCALE 1 = 1		SHEET 1 OF 1		D		031-0125	



# Mouser Electronics

Authorized Distributor

Click to View Pricing, Inventory, Delivery & Lifecycle Information:

Staco:

171-3