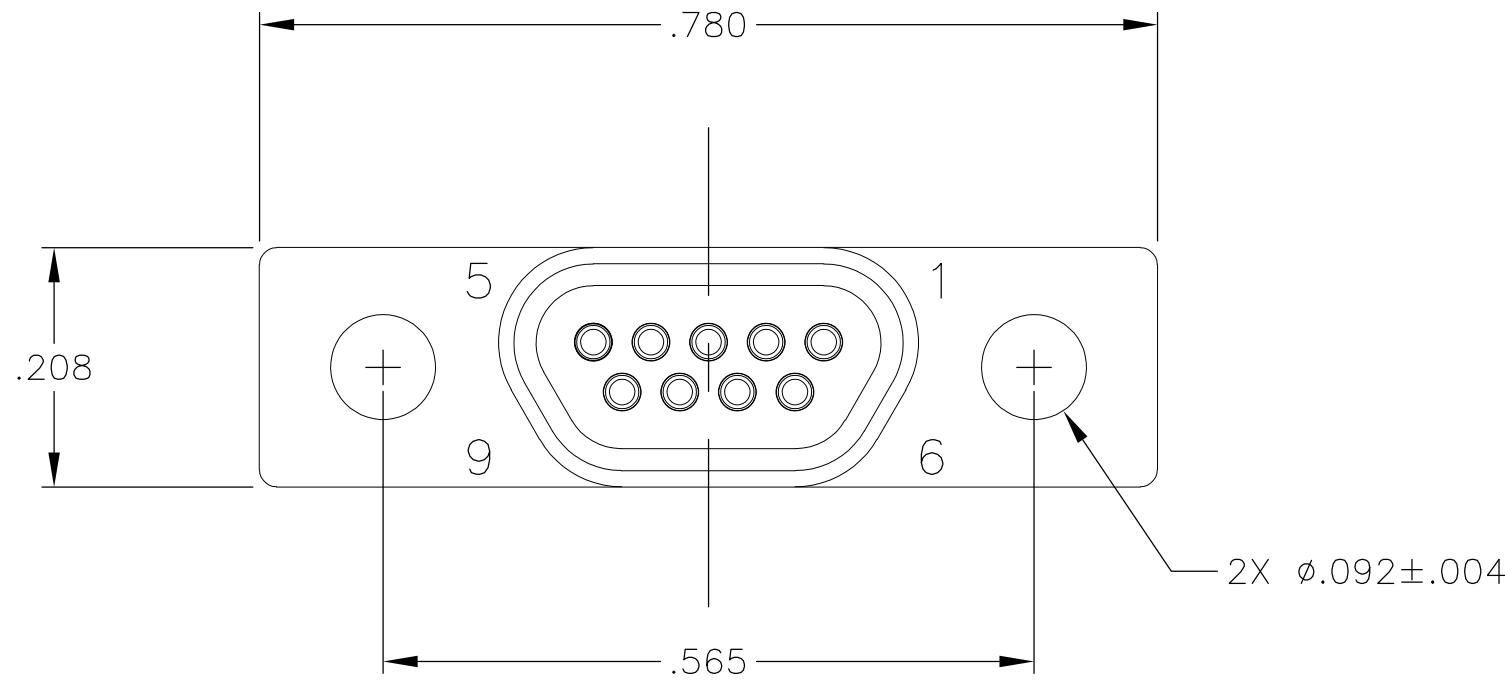
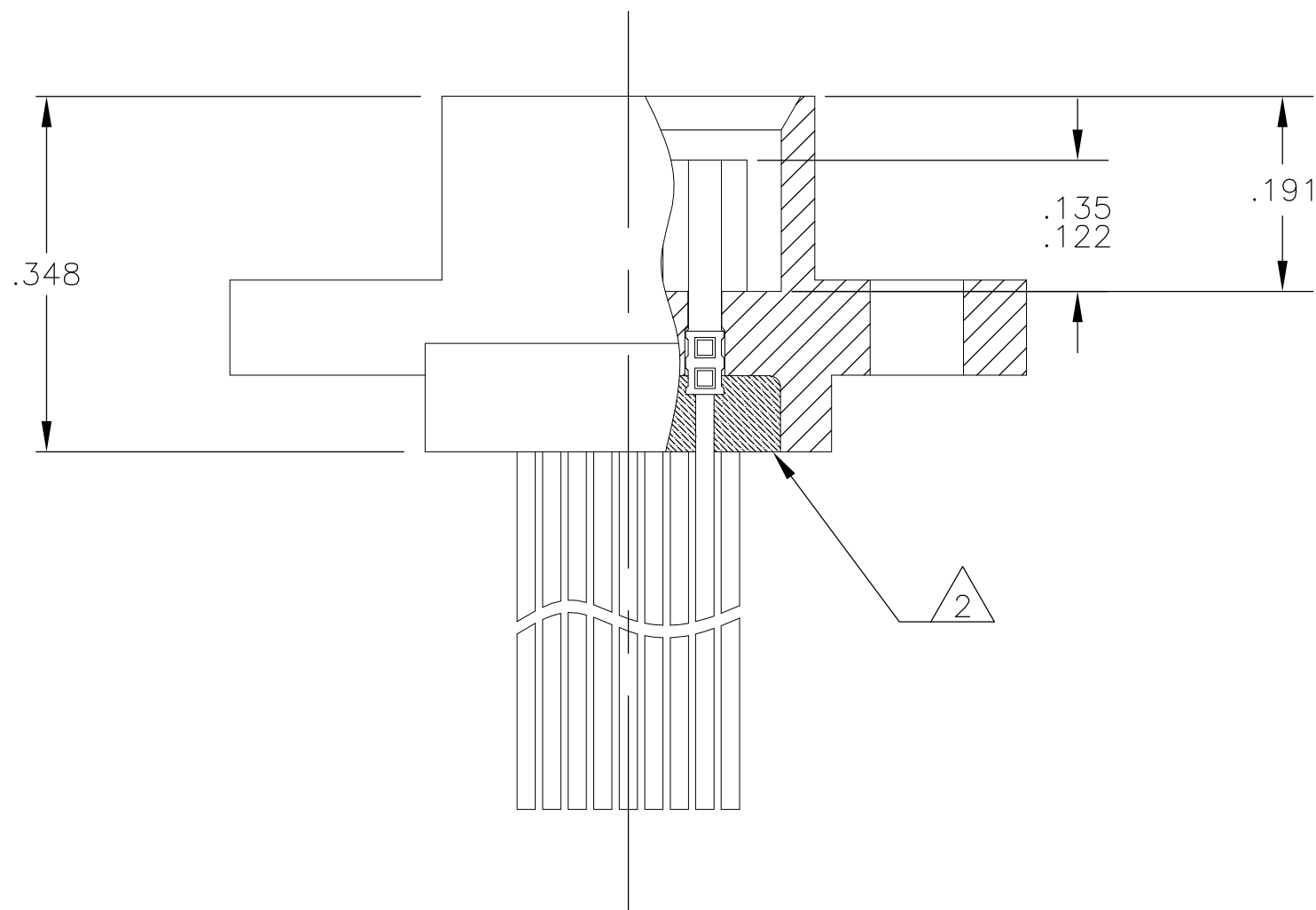


LOC	DIST	REVISIONS					
		P	LTR	DESCRIPTION	DATE	DWN	APVD
—	—		A1	UPDATE PER ECO-11-007825	04/13/11	PJS	CEP

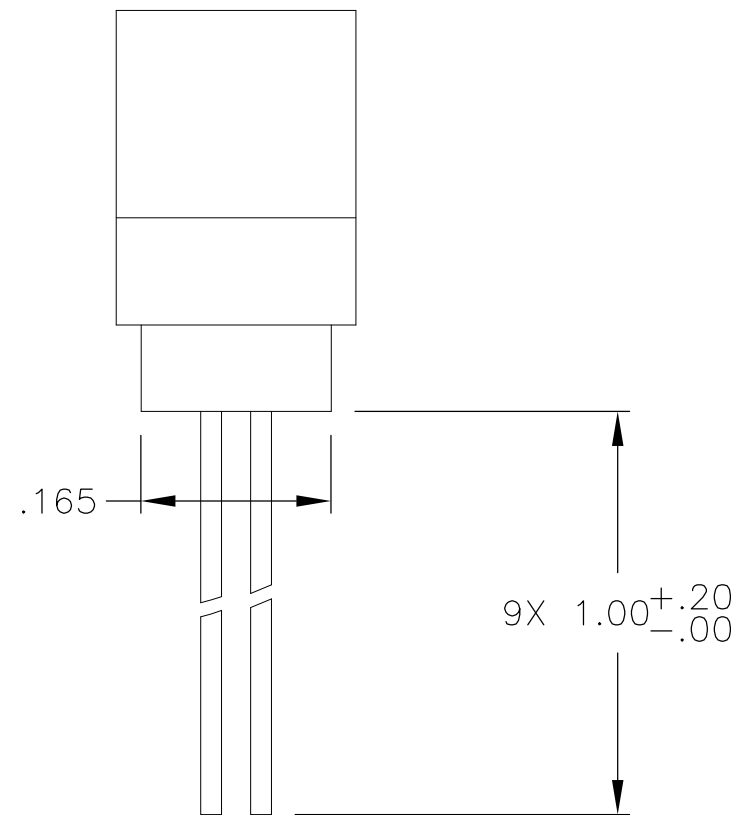
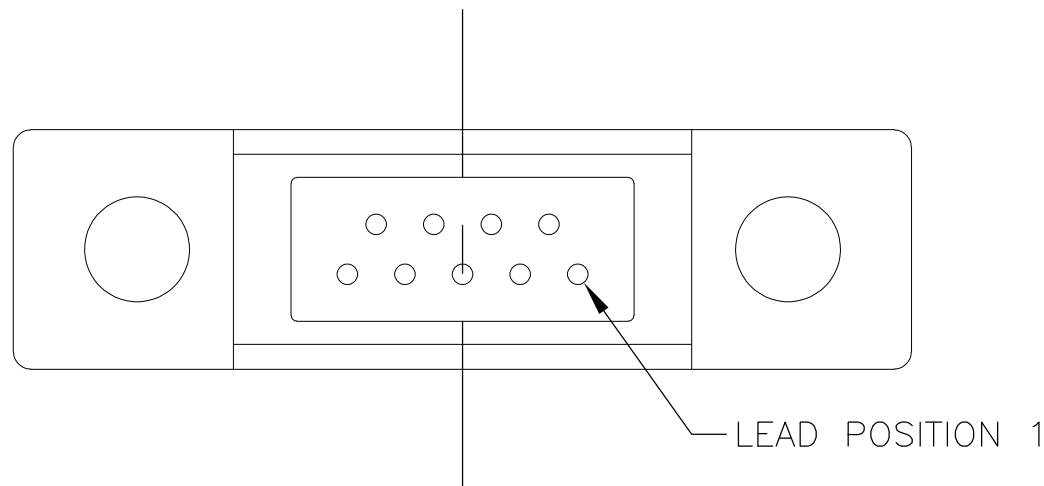
D



C






B



A

- 1 SHELL MAT'L: POLYPHENYLENE SULFIDE IN ACCORDANCE WITH ASTM D4037  
CONTACT MAT'L: COPPER ALLOY, GOLD PLATED  
LEAD MAT'L: COPPER ALLOY, GOLD PLATED AND Sn63Pb37 SOLDER DIPPED
- 2 NO EPOXY ABOVE NOTED SURFACE
- 3 THIS ASSEMBLY WILL MEET THE DIMENSIONAL AND PERFORMANCE REQUIREMENTS OF MIL-DTL-83513, BUT IS NOT QPL DUE TO INSULATOR MATERIAL.

THIS DRAWING IS A CONTROLLED DOCUMENT.			DWN M STORRY CHK —	26 MAR 08 —	 TE Connectivity				
DIMENSIONS: INCHES		TOLERANCES UNLESS OTHERWISE SPECIFIED:	APVD M STORRY PRODUCT SPEC —	26 MAR 08 —	NAME MCDR RECEPTACLE ASSEMBLY, 9 POSITION, 25AWG SOLID LEADS, RYTON INSULATOR, MICRODOT P/N 095-0604-2649				
		0 PLC ± — 1 PLC ± — 2 PLC ± .01 3 PLC ± .005 4 PLC ± — ANGLES ± 1°	APPLICATION SPEC —	—	SIZE A2	CAGE CODE 98278	DRAWING NO C-6-1532238-7	RESTRICTED TO —	
MATERIAL 		FINISH —	WEIGHT —	CUSTOMER DRAWING			SCALE 6:1	SHEET 1 of 1	REV A1

# Mouser Electronics

Authorized Distributor

Click to View Pricing, Inventory, Delivery & Lifecycle Information:

[TE Connectivity:](#)

[095-0604-2649](#)