

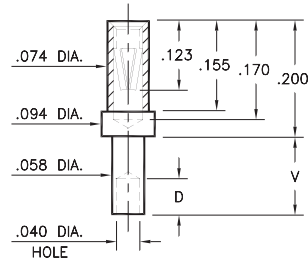
PIN RECEPTACLES

FOR .022" - .032" DIAMETER PINS

0326

0326-X-19-XX-06-XX-10-0

Swage mount in .060 hole

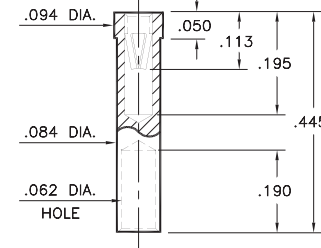


Basic Part Number	Board Thickness	Length V	Depth D
0326-1	.031	.062	.040
0326-2	.062	.094	.062
0326-3	.094	.125	.062
0326-4	.125	.156	.062

5295

5295-0-19-XX-06-XX-10-0

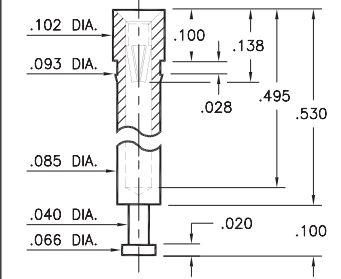
Solder mount in .086 min. mounting hole
Wire Crimp Termination. Accepts wire sizes 18 AWG Max. / 22 AWG Min.



0396

0396-0-15-XX-06-XX-10-0

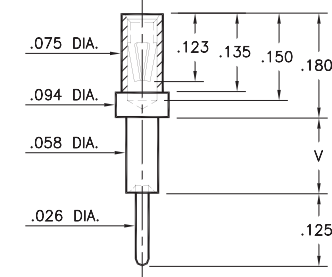
Press-fit in .090 mounting hole



0298

0298-X-15-XX-06-XX-10-0

Swage mount in .060 hole

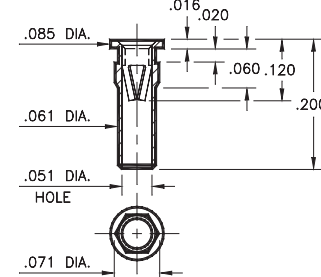


Basic Part Number	Board Thickness	Length V
0298-1	.031	.051
0298-2	.062	.082
0298-3	.094	.113
0298-4	.125	.145

9293

9293-0-15-XX-06-XX-10-0

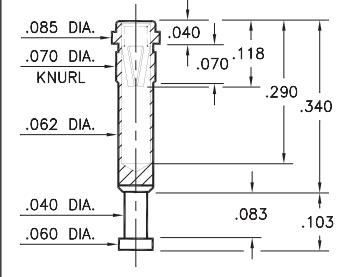
Hex press-fit in .067 plated through-hole



8864

8864-0-15-XX-06-XX-10-0

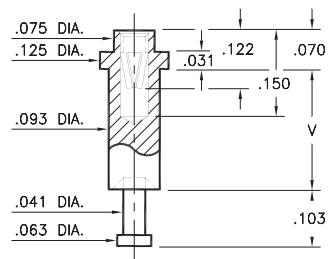
Press-fit in .067 mounting hole



0664

0664-X-15-XX-06-XX-10-0

Swage mount in .096 hole



Basic Part Number	Board Thickness	Length V
0664-1	.094	.125
0664-2	.125	.156
0664-3	.188	.219

SPECIFICATIONS:

Shell Material: Brass Alloy 360, 1/2 Hard

Contact Material: Beryllium Copper Alloy 172, HT

Dimensions: Inches

Tolerances On: Lengths: ±.005

Diameters: ±.002

Angles: ± 2°



ORDER CODE: XXXX - X - 1X - XX - 06 - XX - 10 - 0

BASIC PART #

SPECIFY SHELL FINISH:

- 01 200 μ" TIN/LEAD OVER NICKEL
- ◆ 80 200 μ" TIN OVER NICKEL (RoHS)
- ◆ 15 10 μ" GOLD OVER NICKEL (RoHS)

SPECIFY CONTACT FINISH:

- 01 200 μ" TIN/LEAD OVER NICKEL
- ◆ 80 200 μ" TIN OVER NICKEL (RoHS)
- ◆ 27 30 μ" GOLD OVER NICKEL (RoHS)

SELECT CONTACT:

#06 CONTACT (DATA ON PAGE 255)

(For alternate contact choices, see group D on page 248)



Mouser Electronics

Authorized Distributor

Click to View Pricing, Inventory, Delivery & Lifecycle Information:

Mill-Max:

[0664-3-15-80-06-27-10-0](#) [0291-0-15-01-16-27-10-0](#) [8864-0-15-01-06-01-10-0](#) [8864-0-15-15-06-27-10-0](#) [0298-1-15-15-06-14-10-0](#) [0298-3-15-15-06-14-10-0](#) [0326-2-19-15-06-14-10-0](#) [0326-3-19-15-06-14-10-0](#) [0298-4-15-15-06-14-10-0](#)
[0326-1-19-15-06-14-10-0](#) [0326-4-19-15-06-14-10-0](#)