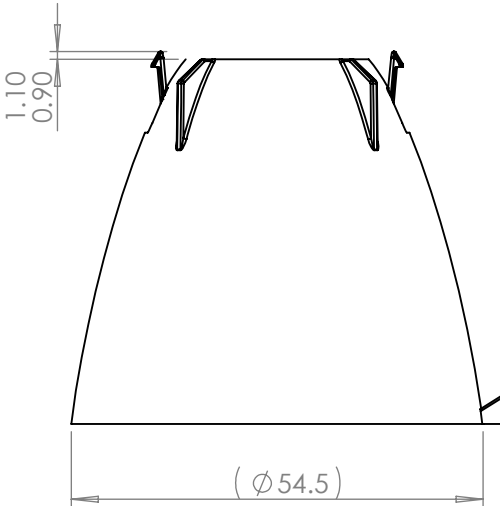
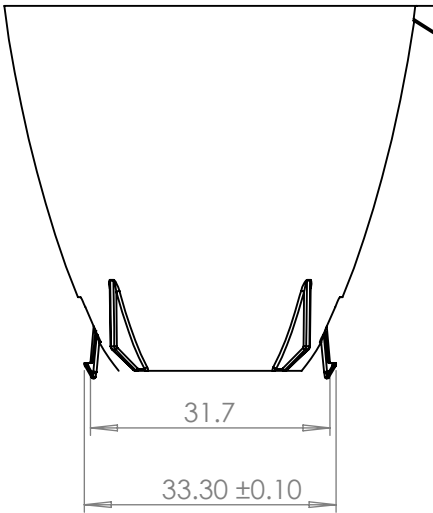
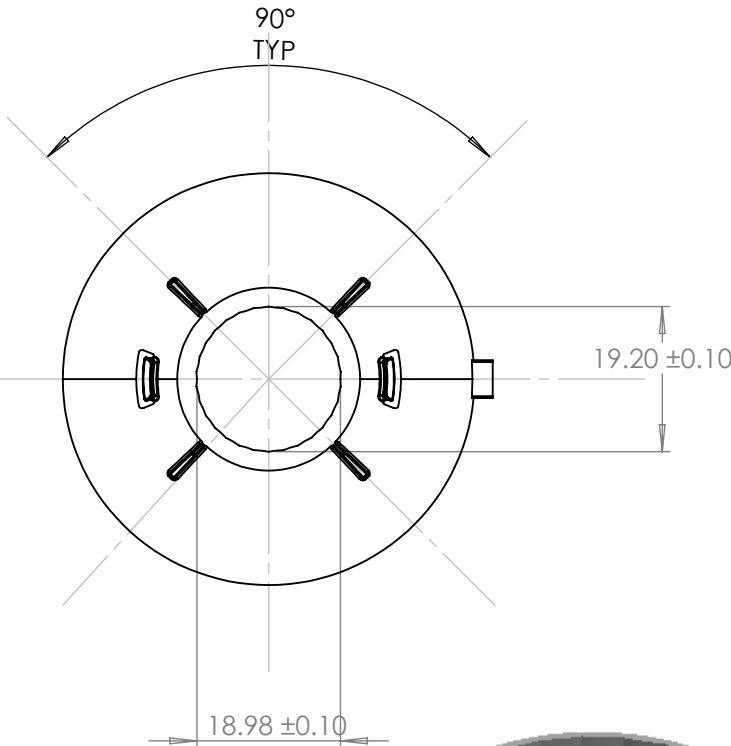
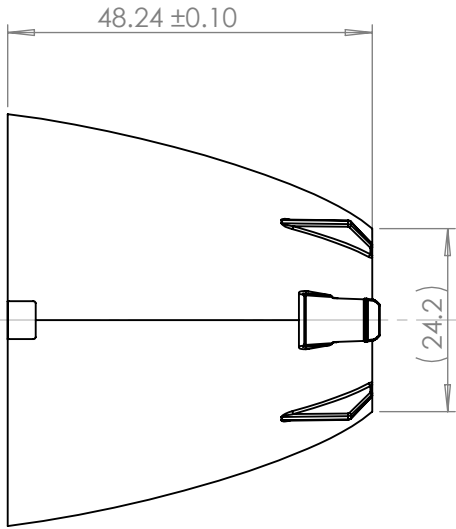
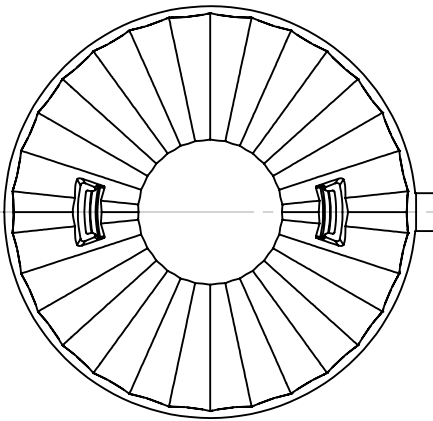


CUSTOMER DRAWING



GATE LOCATION  
DEGATED FLUSH TO REFLECTOR DIAMETER



- NOTES:
- 1 - MATERIAL: POLYCARBONATE
  - 2 - FINISH: COMMERCIAL POLISH FOR ALL NON OPTICAL SURFACES. OPTICAL SURFACES ARE OPTICALLY POLISHED
  - 3 - OVERALL PART THICKNESS = SEE 3D FILE
  - 4 - COLOUR CARCLO GREY/ ALUMINIUM COATED
  - 5 - GENERAL DRAFT 2°
  - 6 - SIMPLIFIED GEOMETRY SHOWN  
- NOT SUITABLE FOR RAY TRACING

SCALE 1:1

<div>carcloOptics</div> <div>103 Buckingham Avenue SL1 4PF, UK. Tel: +44(0) 01753 575 011 Fax: +44(0) 01753 811 359 sales@carclo-optics.com www.carclo-optics.com</div>		Title		NEWTON 54MM DIAMETER REFLECTOR WIDE BEAM ANGLE					
THIRD ANGLE PROJECTION		GENERAL TOLERANCES UNLESS OTHERWISE STATED		Customer		Scale		AS SPEC	
0 ± 0.25 0.0 ± 0.1 0.00 ± 0.05		0 ± 1° 0.0 ± 0.5° 0.00 ± 0.1°		CARCLO		A3			
CONFIDENTIAL: UNAUTHORISED COPYING, DISCUSSION & DISTRIBUTION PROHIBITED		DIMENSION IN mm		Format Size		A3			
CAD File		093-12685-70178-54mm-Dia-RFL-WIDE-Rev2		Part N°		12685		Drw N° 70178	

# Mouser Electronics

Authorized Distributor

Click to View Pricing, Inventory, Delivery & Lifecycle Information:

[Carclo:](#)

[12685](#)