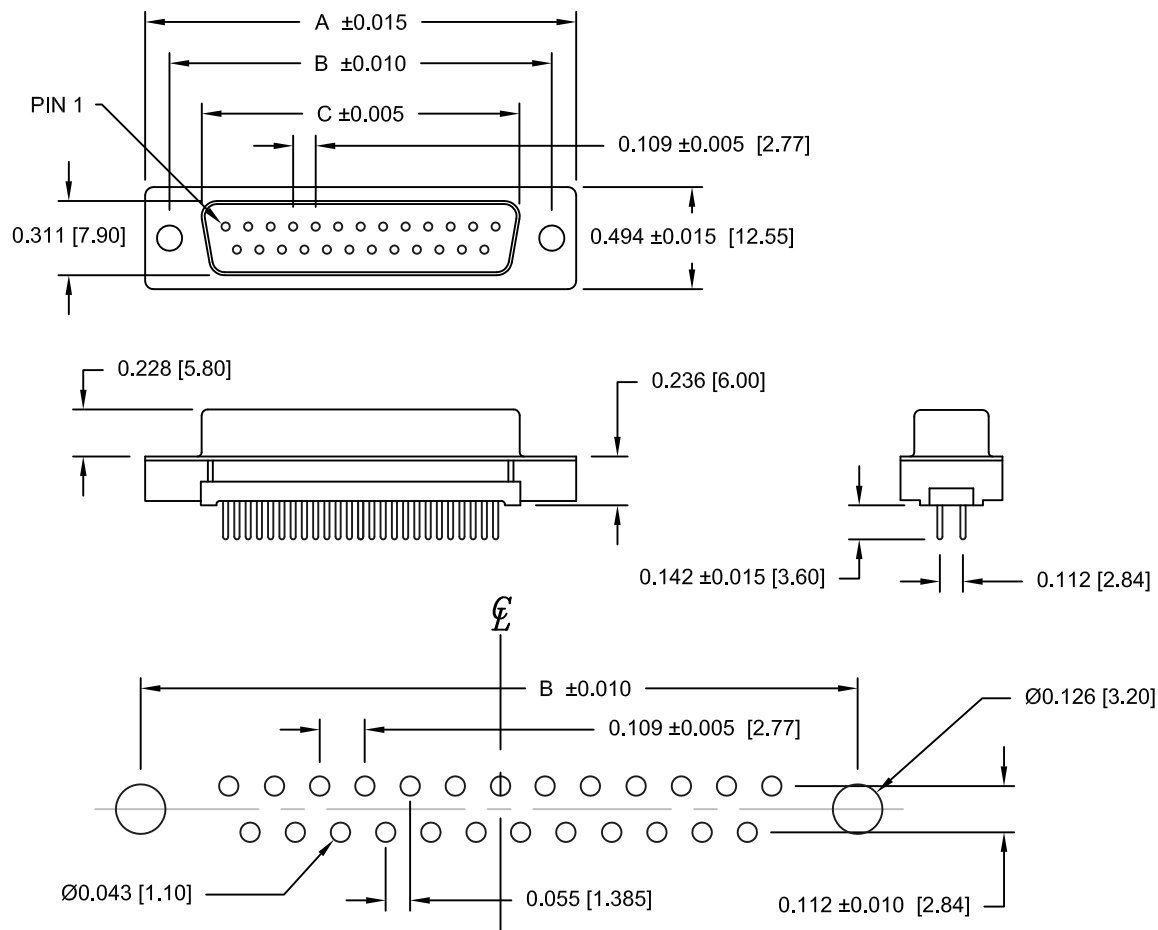


DESCRIPTION: VERTICAL MOUNT - FEMALE - LOW PROFILE - PLASTIC BACK



RECOMMENDED PCB LAYOUT

MATERIAL:

INSULATOR: THERMOPLASTIC POLYESTER, UL94-0, CHEMICAL RESISTANCE, BLACK, 230°C PROCESS TEMP.
SHELL: STEEL, NICKEL PLATED
CONTACT: PHOSPHOR BRONZE, GOLD FLASH OR 30 MICRO-INCH IN MATING AREA, TIN PLATED ON TAIL ENDS

ELECTRICAL:

CURRENT RATING: 3 AMPS
WITHSTANDING VOLTAGE: 250 VAC (RMS) MAX
INSULATION RESISTANCE: 5,000 MOhms Min.
CONTACT RESISTANCE: 25 mOhms Max.
WORKING TEMPERATURE: -55° TO +85°C

191-YYY-213LYYY

SERIES _____
POSITIONS _____
009 _____
015 _____
025 _____
037 _____
GENDER _____
2 = FEMALE
TERMINATION _____
1 = SOLDER TAIL
SHELL PLATING _____
3 = STEEL, NICKEL PLATED
RoHS COMPLIANT (LOW TEMP. PROCESS)
HARDWARE OPTIONS _____
00 = NO HARDWARE, 0.125 DIA. HOLE
55 = 4-40 INSERT
56 = 4-40 INSERT WITH BOARD LOCK
57 = 4-40 STANDOFF WITH BOARD LOCK
59 = 4-40 STANDOFF
PLATING OPTIONS _____
1 = GOLD FLASH
2 = 30 MICRO-INCH GOLD

NUMBER OF CONTACTS	"A" Inch (mm)	"B" Inch (mm)	"C" Inch (mm)
9	1.213 (30.81)	.984 (24.99)	.643 (16.33)
15	1.543 (39.19)	1.312 (33.32)	.971 (24.66)
25	2.088 (53.04)	1.852 (47.04)	1.511 (38.38)
37	2.729 (69.32)	2.500 (63.50)	2.159 (54.84)

RoHS COMPLIANT

UNITS = INCHES [MM]

DO NOT SCALE FROM DRAWING



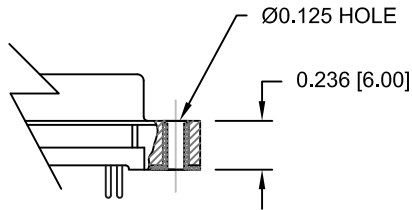
THESE DRAWINGS AND SPECIFICATIONS ARE THE PROPERTY OF NorComp AND SHALL NOT BE REPRODUCED, COPIED OR USED AS THE BASIS FOR THE MANUFACTURE OF SALE OF APPARATUS WITHOUT WRITTEN PERMISSION.

NorComp

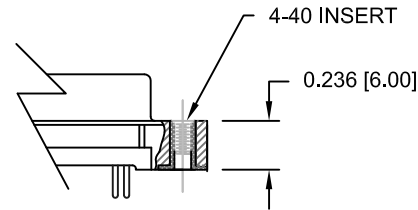
DRAWN: PAM JENKINS		DATE: 8-22-05	
SCALE: NTS	SHEET 1	OF 2	REV 7
DWG NO. 191-YYY-213LYYY			

DESCRIPTION: 191 SERIES HARDWARE OPTIONS

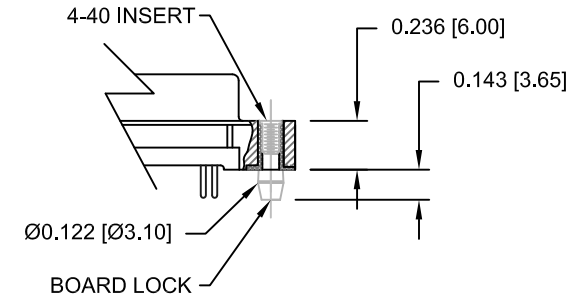
00 = .125 DIA. HOLE



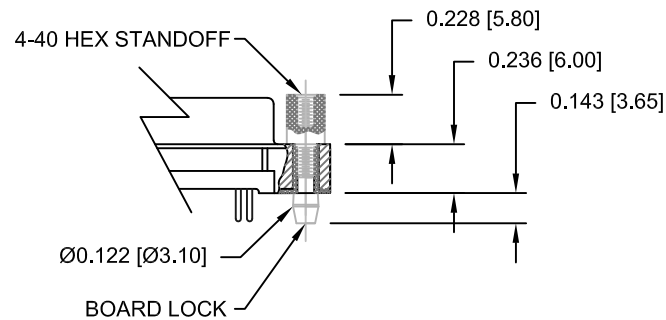
55 = 4-40 INSERT



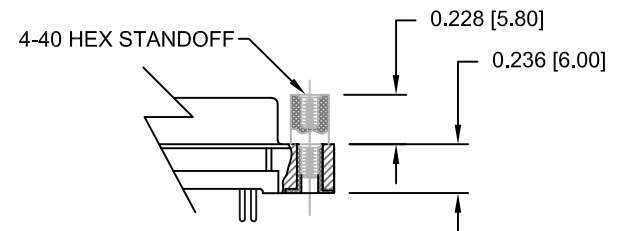
56 = 4-40 INSERT WITH BOARD LOCK



57 = 4-40 STANDOFF WITH BOARD LOCKS



59 = 4-40 STANDOFF



DO NOT SCALE FROM DRAWING



THESE DRAWINGS AND SPECIFICATIONS ARE THE PROPERTY OF NorComp AND SHALL NOT BE REPRODUCED, COPIED OR USED AS THE BASIS FOR THE MANUFACTURE OF SALE OF APPARATUS WITHOUT WRITTEN PERMISSION.

DRAWN: PAM JENKINS

DATE: 8-22-05

NorComp

SCALE: NTS	SHEET 2 OF 2	REV 7
DWG NO. 191-YYY-213LYYY		

RoHS COMPLIANT