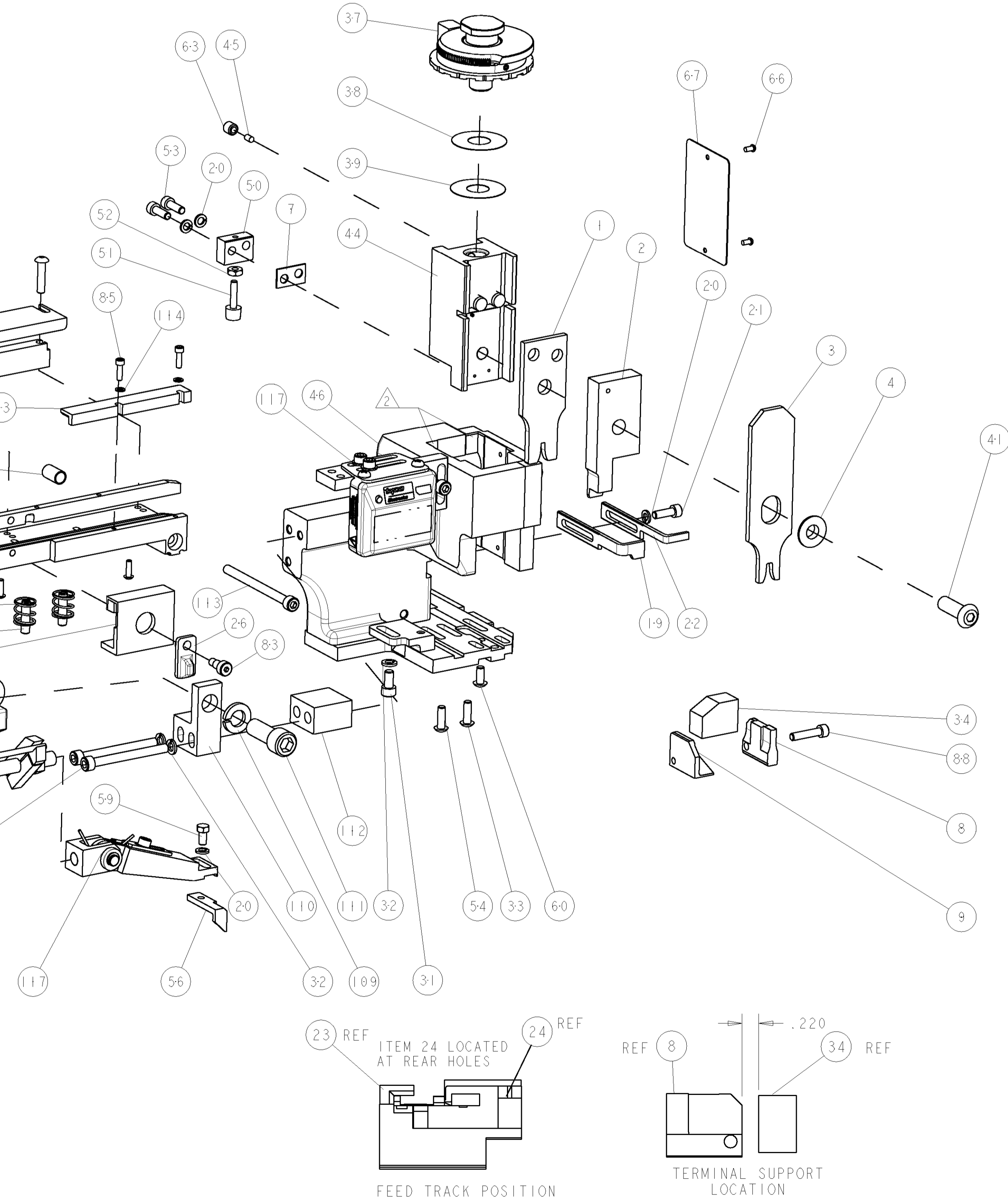


8			7		
THIS DRAWING IS UNPUBLISHED.			RELEASED FOR PUBLICATION		
20			20		
(C) COPYRIGHT 20			BY TYCO ELECTRONICS CORPORATION. ALL RIGHTS RESERVED.		
PART NUMBER	REV	FIRST USED	POWER UNIT	FEED TYPE	DESCRIPTION
1855273-1	A	122500-1	LEADMAKER	AIR FEED	CUTS CARRIER
1855273-2	A	565435-5	BENCH MODEL K	AIR FEED	CUTS CARRIER
1855273-3	A	354500-1	BENCH MODEL G	AIR FEED	CUTS CARRIER
1855273-6	A	122500-1	LEADMAKER	AIR FEED	CONTINUOUS CARRIER
7-1855273-7	A	-	-	-	SPARE PARTS


- △ RECOMMENDED SPARE PARTS
- △ GREASE LIGHTLY
- △ GUARD MUST BE IN PLACE WHEN OPERATING APPLICATOR IN A BENCH MACHINE
- △ 16 AWG NOT RECOMMENDED BY PACKARD FOR THIS TERMINAL.
- △ CUT TO LENGTH AT ASSEMBLY.
- △ THIS APPLICATOR CRIMPS EVERY THIRD TERM.

*** WARNING**
ON INSTALLATION, SET WIRE DISC TO LARGEST WIRE SIZE SETTING. USE OF SETTINGS BELOW MIN. REQUIRED CRIMP HEIGHT SETTING WILL CAUSE DAMAGE TO CRIMP TOOLING.



TERMINAL NAME: TAXI TERM F M/P 280 6					
AMP	PACKARD	PACKARD TERMINAL - AMP CRIMP SPECS			
1949274-1	12110645				
-	-	CRIMP HEIGHT		WIRE SIZE	REF SETTING
-	-	.062±.002[1.57±0.05mm]		16AWG 4	C5
-	-	.059±.002[1.50±0.05mm]		1mm2	D0
-	-	.056±.002[1.42±0.05mm]		18AWG or 0.8mm2	D6
-	-	-		-	-
-	-	CRIMP	SIZE	TYPE	RANGE
-	-	WIRE	.100 [2.54mm]	F	18-16 AWG
-	-	INSUL	.155 [3.94mm]	F	Ø.077-.104
WIRE STRIP LENGTH	TERM APPL SPEC	FEED	APPLICATOR INSTRUCTIONS		SET UP GAGE
.219 -.250	NONE	1.920	408-8040		458637-1

-	-	-	REF	-	-	692655-6	AIR FEED VALVE ASSEMBLY	118
-	1	1	1	1	-	461062-1	FEED FINGER ASSEMBLY	117
-	-	-	REF	-	..	455749-1	GUARD WINDOW	116
-	-	REF	-	-	..	679532-1	INSERT, GUARD	115
-	2	2	2	2	-	21024-2	WASHER, SPRG LOCK, REG NO 4	114
-	1	1	1	1	-	8-21000-7	SCR, SKT HD CAP 10-32 X 2.500	113
-	1	1	1	1	-	461690-1	SPACER, AIR FEED	112
-	1	1	1	1	-	3-21001-5	SCR, SKT HD CAP 3/8-16 X 1.000	111
-	1	1	1	1	-	459610-1	MOUNT, FEED BRACKET	110
-	1	1	1	1	-	21024-8	WASHER, SPRG LOCK, REG 3/8	109
-	1	1	-	1	-	692655-7	AIR FEED VALVE ASSEMBLY	108
-	-	-	REF	-	-	24024-2	VALVE, SHUT OFF	106
-	-	-	1	-	-	692655-5	AIR FEED VALVE ASSEMBLY	105
-	1	1	1	1	-	461065-2	ASSEMBLY, AIR FEED	104
-	2	2	2	2	-	4-21000-3	SCR, SKT HD CAP 10-32 X 2.000	103
-	1	1	1	1	-	1-22281-8	SPRING, COMPRESSION	102
-	2	2	2	2	-	5-21006-6	SCR, SET, CUP POINT 10-32 X .750	99
-	1	1	1	1	-	1-189807-1	FENCE	95
-	2	2	2	2	-	1-21002-4	SCR, BTN SKT HD CAP 4-40 X .375	94
-	1	1	1	1	-	2-21000-9	SCR, SKT HD CAP 8-32 X .750	88
-	2	2	2	2	-	1-21000-4	SCR, SKT HD CAP 4-40 X .375	85
-	1	1	1	1	-	21989-8	SCR, SKT HD SHLDR 3/16 DIA X .250	83
-	1	1	1	1	-	4088040	SF APPL INST 408-8040	72
-	1	1	1	1	-	217238-1	GENERAL INSTRUCTION PKG	71
-	1	1	1	1	-	461264-5	PLATE, IDENTIFICATION	67
-	2	2	2	2	-	21017-2	SCREW, DRIVE	66
-	1	1	1	1	-	21009-2	SCR, SET, SELF LOCKING 1/4-20 X .250	63
-	1	1	1	1	-	22733-8	SCR, BHSC, SELF-LOCKING, 8-32 X .375	60
-	1	1	1	1	-	2-22603-0	SCR, HEX HD CAP 8-32 X .312	59
-	1	1	1	1	-	2-694433-3	FEED PAWL	56
-	2	2	2	2	-	2-21002-2	SCR, BTN SKT HD CAP 8-32 X .500	54
-	2	2	2	2	-	2-21000-7	SCR, SKT HD CAP 8-32 X .500	53
-	1	1	1	1	-	21018-5	NUT, HEX, REG 6-32	52
-	1	1	1	1	-	811242-2	BUMPER, HOLD DOWN	51
-	1	1	1	1	-	690753-1	SPACER, TONKER	50
-	1	1	1	1	-	1633399-1	APPL., BASIC AIR FEED SUB ASSY	46
-	1	1	1	1	-	690191-1	PLUG,NYLON	45
-	1	1	1	1	-	2-819307-4	RAM, SIDE FEED	44
-	1	1	1	1	-	690686-2	CRIMPER, BOLT SPECIAL	41
-	1	1	1	1	-	690125-1	SHIM SUB-ASSY	39
-	1	1	1	1	-	469367-1	SHIM	38
-	1	1	1	1	-	879103-2	FINE ADJUST HEAD ASSEMBLY	37
-	1	1	1	1	-	3-690786-3	TERMINAL SUPPORT	34
-	2	2	2	2	-	2-21002-4	SCR, BTN SKT HD CAP 8-32 X .750	33
-	3	3	3	3	-	21024-5	WASHER, SPRG LOCK, REG NO 10	32
-	1	1	1	1	-	3-21000-4	SCR, SKT HD CAP 10-32 X .375	31
-	1	1	1	1	-	2-1320908-0	SPACER, STRIP GUIDE	30
-	1	1	1	1	-	1-1633087-5	PLATE, STRIP GUIDE	29
-	2	2	2	2	-	22284-1	SPRING, COMPRESSION	27
-	1	1	1	1	-	356835-1	LEVER, DRAG RELEASE	26
-	1	1	1	1	-	690754-7	DRAG, SPECIAL	25
-	1	1	1	1	-	1-1320928-2	PLATE, STRIP GUIDE	24
-	1	1	1	1	-	2-690712-2	FRONT STRIP GUIDE	23
-	1	-	-	1	-	690472-2	STRIPPER	22
-	1	1	1	1	-	2-21000-7	SCR, SKT HD CAP 8-32 X .500	21
-	4	4	4	4	-	21024-4	WASHER, SPRG LOCK, REG NO 8	20
-	-	1	1	-	-	691353-1	STRIPPER	19
-	1	1	1	1	-	3-853714-5	PLATE, REAR SHEAR	9
1	1	1	1	1	-	1214596-5	ANVIL, SPECIAL COMBINATION	8
-	1	1	1	1	-	1-240641-9	SPACER	7
-	1	1	1	1	-	238009-1	BLOCK, FL CRIMPER SPACER	4
1	1	1	1	1	-	3-456134-6	CRIMPER, INSULATION F PREMIUM	3
-	1	1	1	1	-	853720-5	BLADE, SLUG	2
1	1	1	1	1	-	2-456407-8	CRIMPER, WIRE PREMIUM	1

THIS DRAWING IS A CONTROLLED DOCUMENT FOR TYCO ELECTRONICS CORPORATION. IT IS TO BE USED FOR THE PURPOSES SPECIFIED IN THE ORDER. IT IS NOT TO BE REPRODUCED OR TRANSMITTED IN ANY FORM OR BY ANY MEANS, ELECTRONIC OR MECHANICAL, INCLUDING PHOTOCOPYING, RECORDING, OR BY ANY INFORMATION STORAGE AND RETRIEVAL SYSTEM. WITHOUT THE WRITTEN PERMISSION OF TYCO ELECTRONICS CORPORATION. THIS DRAWING IS UNPUBLISHED.				DWN	B. HIGMAN	06MAR2007	tyco Electronics		Tyco Electronics Harrisburg, PA 17105-3608																					
DIMENSIONS:				CHK	B. HIGMAN	06MAR2007	NAME	FINE ADJUST SIDE FEED HDM APPLICATOR -																						
INCHES				APVD	T. BENCHOFF	06MAR2007																								
TOLERANCES UNLESS OTHERWISE SPECIFIED:				PRODUCT SPEC																										
				1 PLC ±.01			APPLICATION SPEC																							
				2 PLC ±.01																										
				3 PLC ±.001																										
				4 PLC ±.0001																										
ANGLES				APPLICATOR SPEC			SIZE			CAGE CODE			DRAWING NO			RESTRICTED TO														
FINISH				WEIGHT																										
MATERIAL				-																										
				CUSTOMER DRAWING			A			00779			C=1855273			SCALE 3:5			SHEET			OF			REV			A		

CUSTOMER VIEWABLE ASSEMBLY

Mouser Electronics

Authorized Distributor

Click to View Pricing, Inventory, Delivery & Lifecycle Information:

[TE Connectivity:](#)

[1855273-1](#)