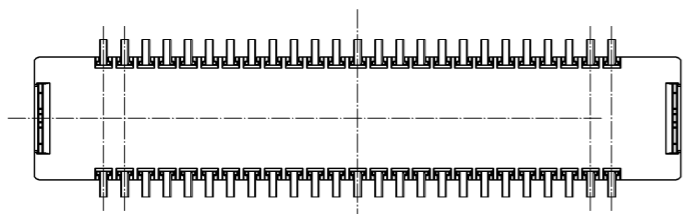
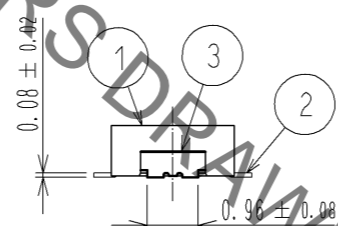
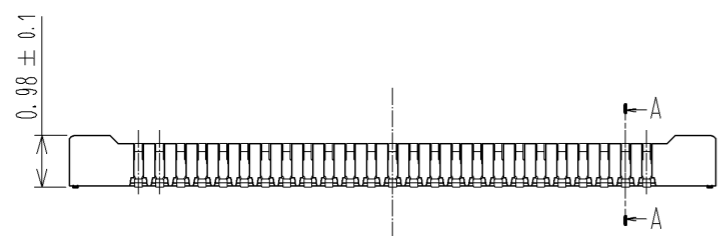
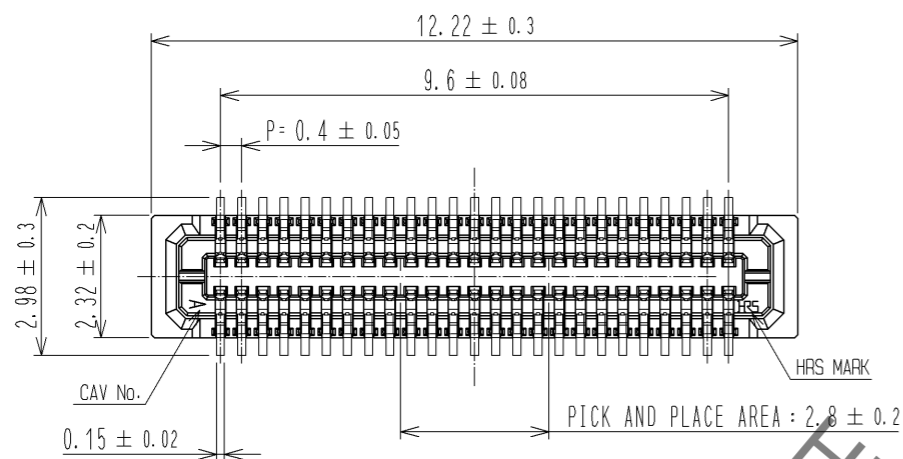
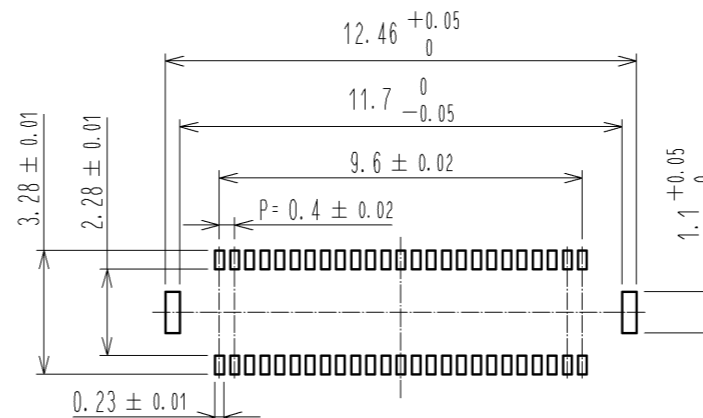


Oct.1.2020 Copyright 2020 HIROSE ELECTRIC CO., LTD. All Rights Reserved.
 In case of consideration for using Automotive equipment / device which demand high reliability, kindly contact our sales window correspondents.

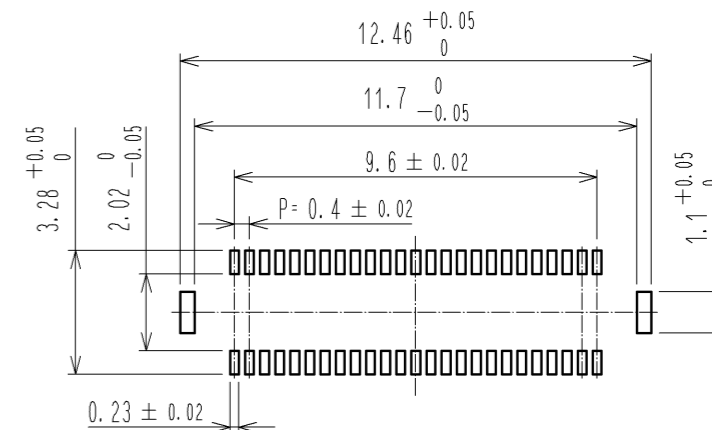


RECOMMENDED METAL MASK
OPENING PATTERN

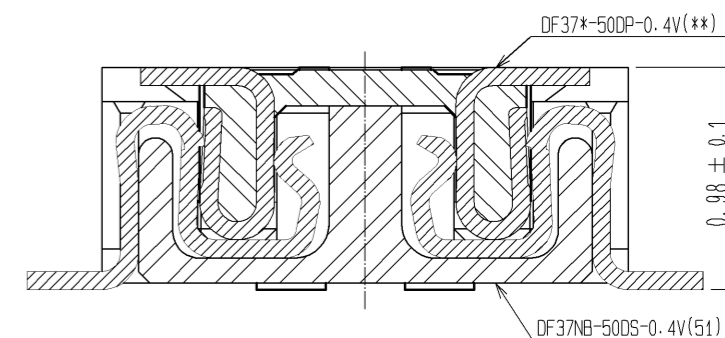


RECOMMENDED SOLDER PASTE THICKNESS: 120#μm

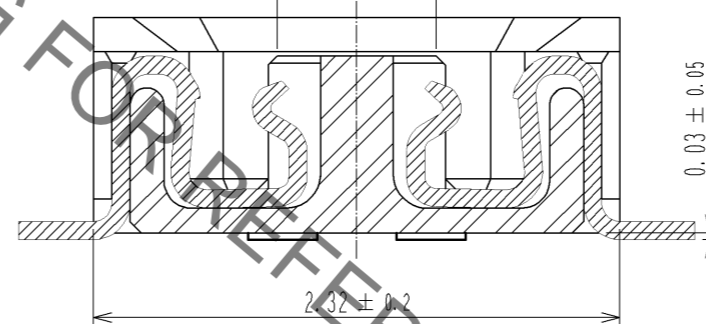
RECOMMENDED PATTERN



ENGAGEMENT FIGURE



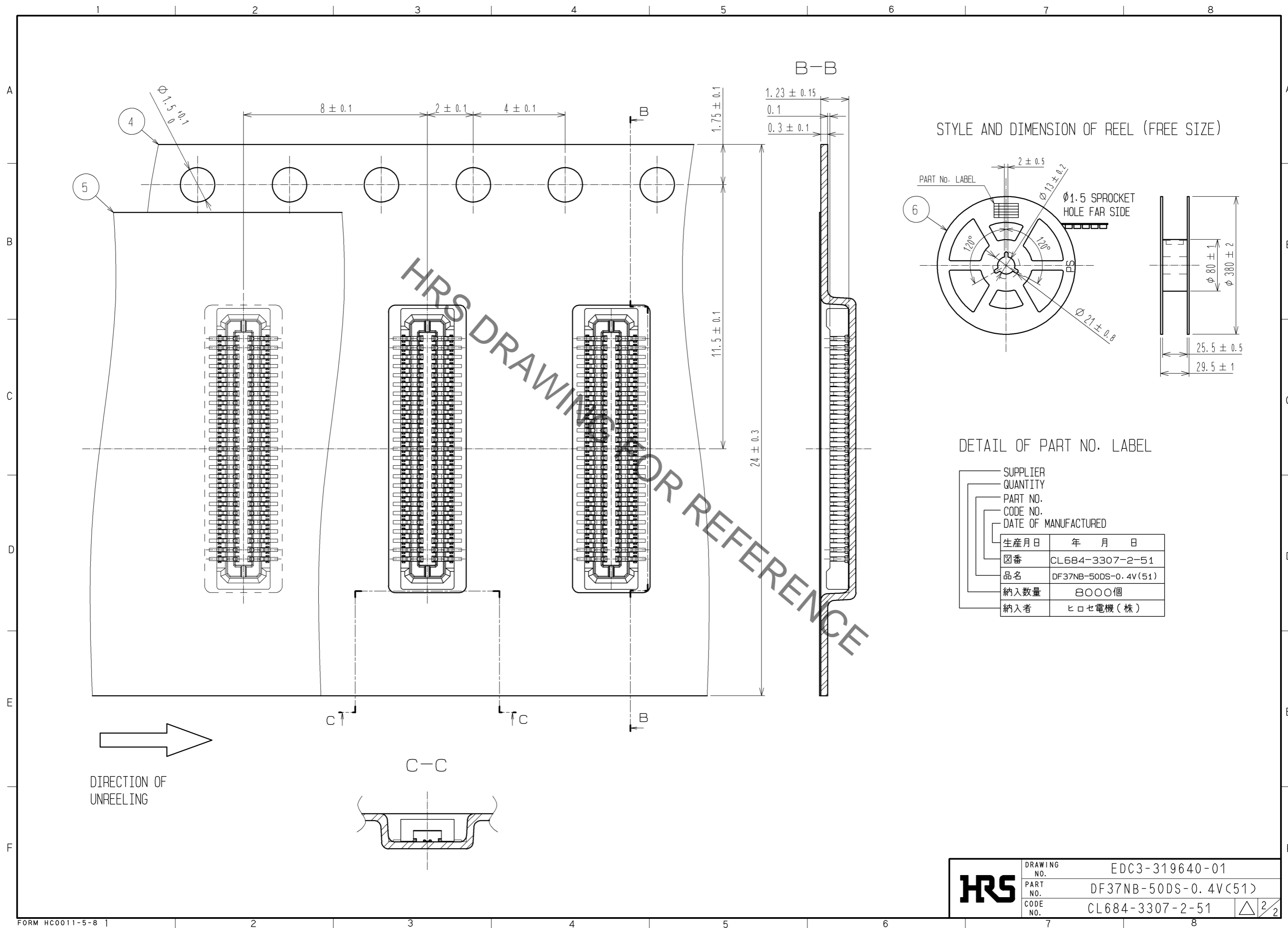
A-A
PICK AND PLACE AREA: 0.7 ± 0.2



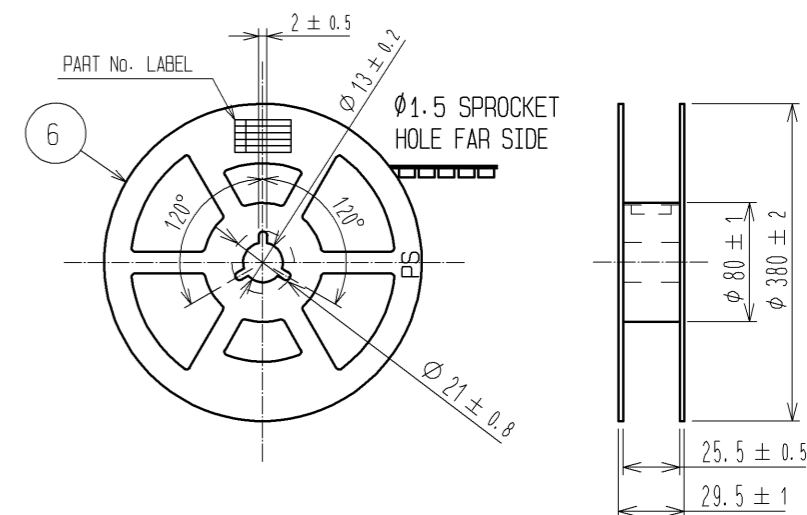
- NOTE 1. ALL LEADS CO-PLANARITY SHALL BE 0.1 MAX.
 2. PER REEL : 8000 CONNECTORS.
 3. AT THE BEGINNING OF THE REEL, 100 mm AT MIN SHALL BE EMPTY POCKETS.
 AT THE END OF THE REEL, 160 mm AT MIN SHALL BE EMPTY.
 4. CONTACT PLATING SPECIFICATIONS.
 CONTACT AREA : GOLD 0.05#μm MIN.
 SMT LEAD : GOLD 0.05#μm MIN.
 UNDERPLATING : NICKEL 1#μm MIN.
 (SURFACE : SEALING)
 5. METAL HOLD DOWN PLATING SPECIFICATIONS.
 MOUNTING AREA: GOLD 0.05#μm MIN.
 UNDERPLATING : NICKEL 1#μm MIN.
 6. PEEL FORCE OF COVER TAPE REFERS TO JIS C 0806.

3	PHOSPHOR BRONZE	5	6	PS	PLASTIC REEL (BLACK)
2	PHOSPHOR BRONZE	4	5	POLYESTER	CLEAR(COVER TAPE)
1	LCP	UL94V-0, BLACK	4	PS	CLEAR(EMBOSSED CARRIER TAPE)
NO.	MATERIAL	FINISH, REMARKS	NO.	MATERIAL	FINISH, REMARKS
UNITS mm		SCALE FREE	COUNT	DESCRIPTION OF REVISIONS	
DESIGNED		CHECKED		DATE	
APPROVED : KH. IKEDA		10.10.01		DRAWING NO. EDC3-319640-01	
CHECKED : TS. MIYAZAKI		10.10.01		PART NO. DF37NB-50DS-0.4V(51)	
DESIGNED : RT. SHIMIZU		10.10.01		CODE NO. CL684-3307-2-51	
DRAWN : YN. SAKAMOTO		10.09.30		1/2	

Oct.1.2020 Copyright 2020 HIROSE ELECTRIC CO., LTD. All Rights Reserved.
 In case of consideration for using Automotive equipment / device which demand high reliability, kindly contact our sales window correspondents.



STYLE AND DIMENSION OF REEL (FREE SIZE)



DETAIL OF PART NO. LABEL

生産月日	年 月 日
図番	CL684-3307-2-51
品名	DF37NB-50DS-0.4V(51)
納入数量	8000個
納入者	ヒロセ電機(株)

HRS	DRAWING NO.	EDC3-319640-01
	PART NO.	DF37NB-50DS-0.4V(51)
	CODE NO.	CL684-3307-2-51
		\triangle 2/2